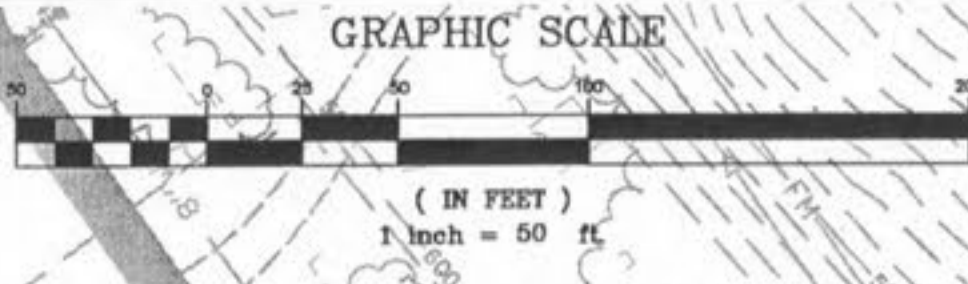
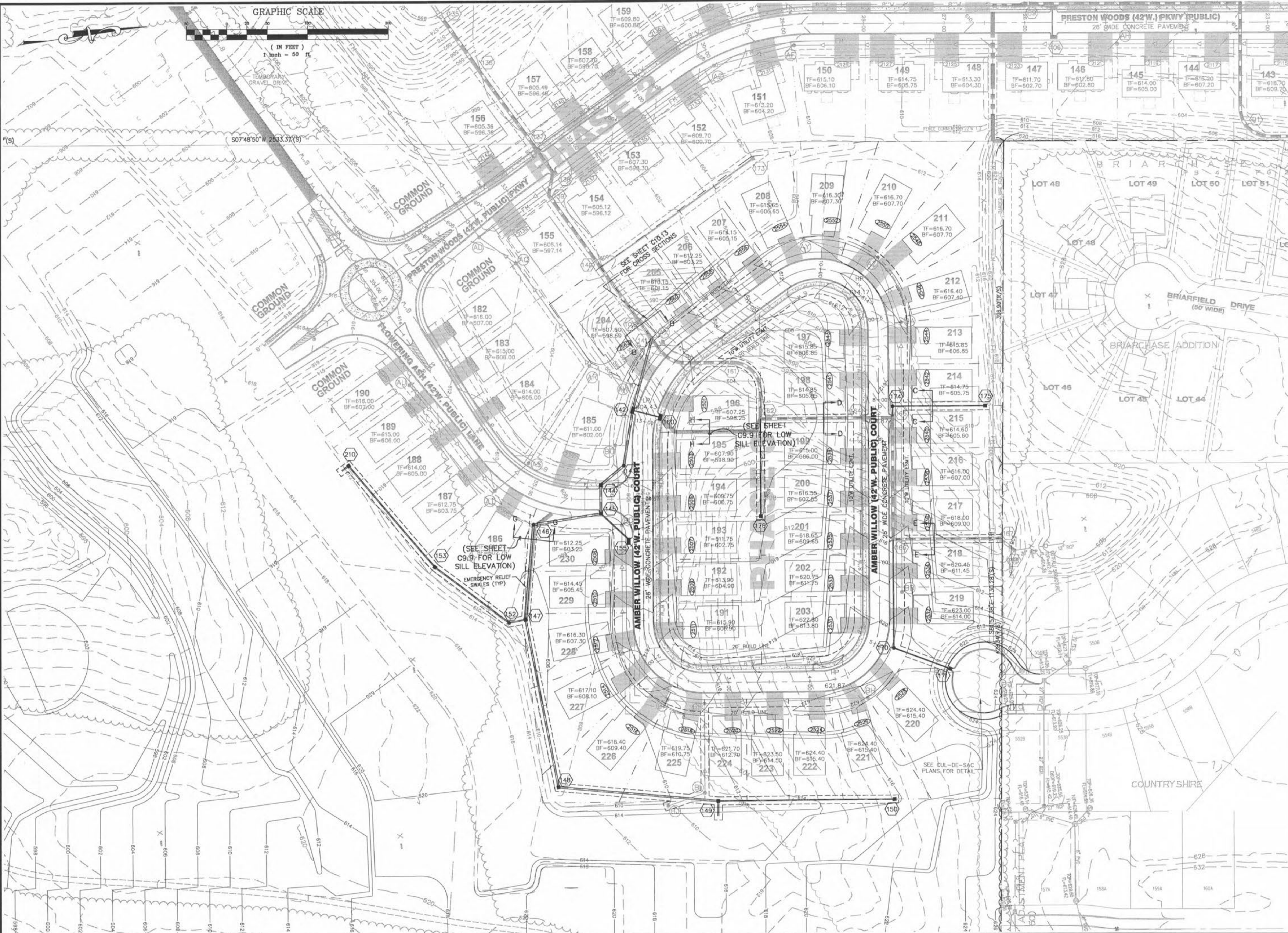


USER: \\msn\TAC\_C51\_75151m  
 DRAWING: S:\035\Jobs\2007\07-0178\CO7-0178.dwg IMPROVEMENT PLANS PHASE III VOLUME 1 PLAN C5.0 STORM SEWER PLAN.dwg



REVISIONS	
DATE	DESCRIPTION
2/2/08	CITY, FINISH, & BUDGET CHECK COMMENTS
3/7/08	CITY COMMENTS

DEVELOPER/OWNER:  
**THE JONES COMPANY HOMES, L.L.C.**  
 16640 CHESTERFIELD GROVE, SUITE 200  
 CHESTERFIELD, MO 63005  
 PHONE: (636) 537-7192

THE PROFESSIONAL ENGINEER'S SIGNATURE AND PERSONAL SEAL ARE REQUIRED FOR ALL PLANS. (PURSUANT TO SECTION 671, RSMO.) ANY RESPONSIBILITY FOR ALL OTHER PLANS, SPECIFICATIONS, ESTIMATES, REPORTS OR OTHER DOCUMENTS OR DRAWINGS PREPARED FOR ANY PART OF THE PROJECT TO WHICH THIS PAGE REFERS, IS NOT THE RESPONSIBILITY OF THE ENGINEER.



**PRESTON WOODS - PHASE III**  
 IMPROVEMENT PLANS  
 PRESTON WOODS LANE  
 OF FALLON, MO. 63366

**STORM SEWER PLAN**

planning • engineering • surveying • landscape architecture  
**Cole and Associates**  
 INCORPORATED  
 10777 sunset office dr.  
 saint louis, missouri 63127  
 p: 314 984 9887 f: 314 984 0587

DESIGNED BY	JKW
DRAWN BY	KDK
CHECKED BY	JFH
DATE	12/19/07
Job Number	07-0178
Sheet Number	C5.1