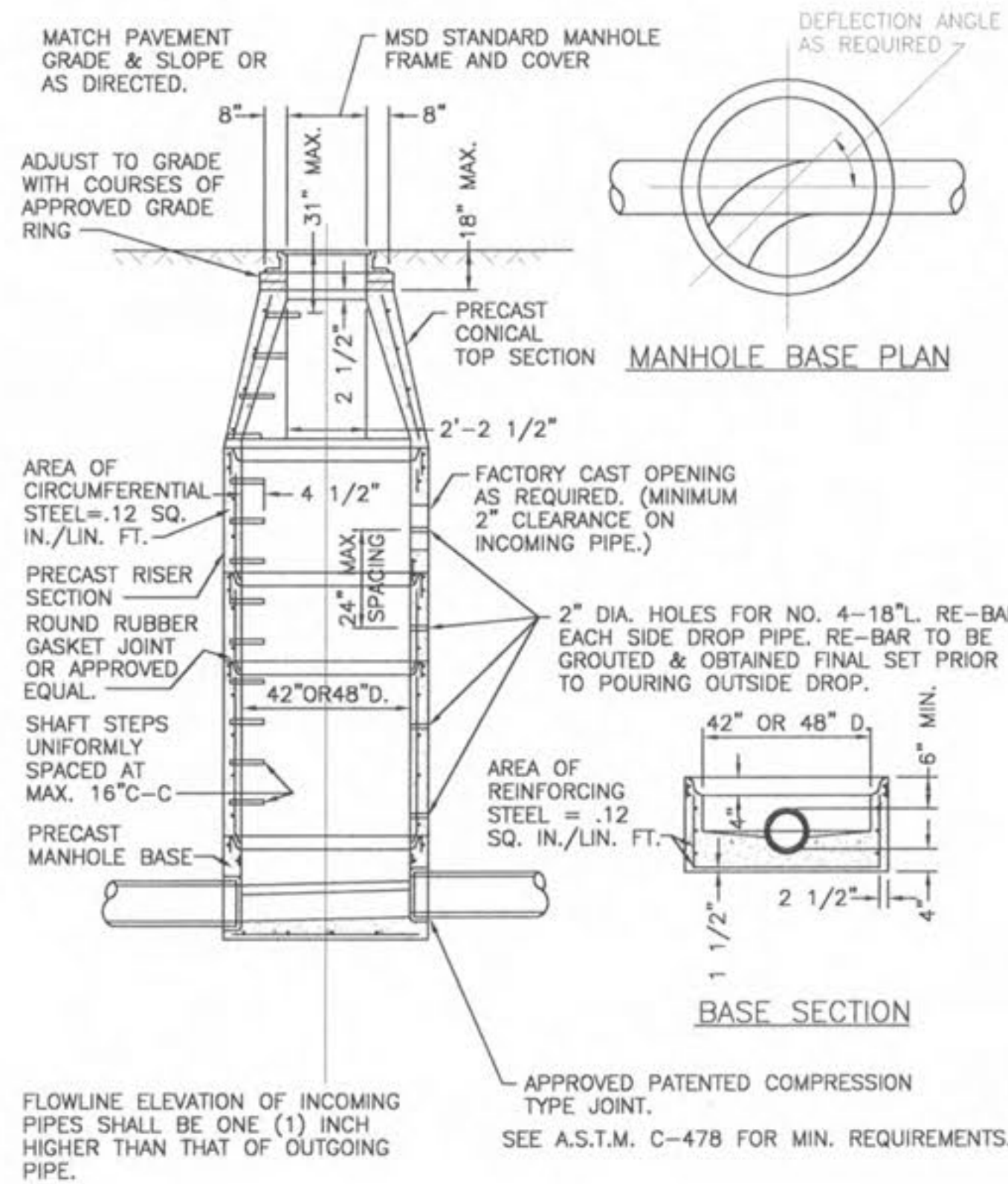
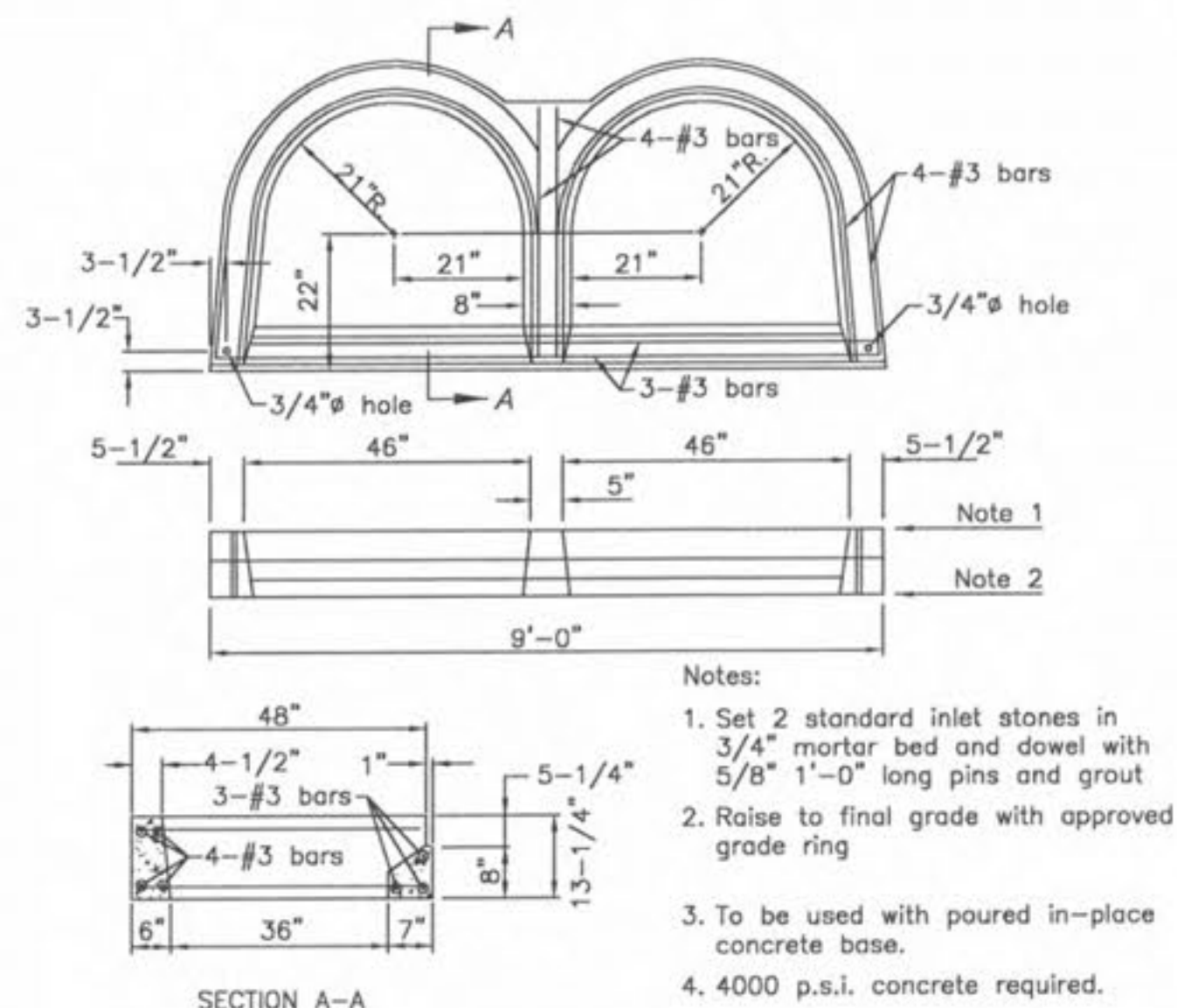


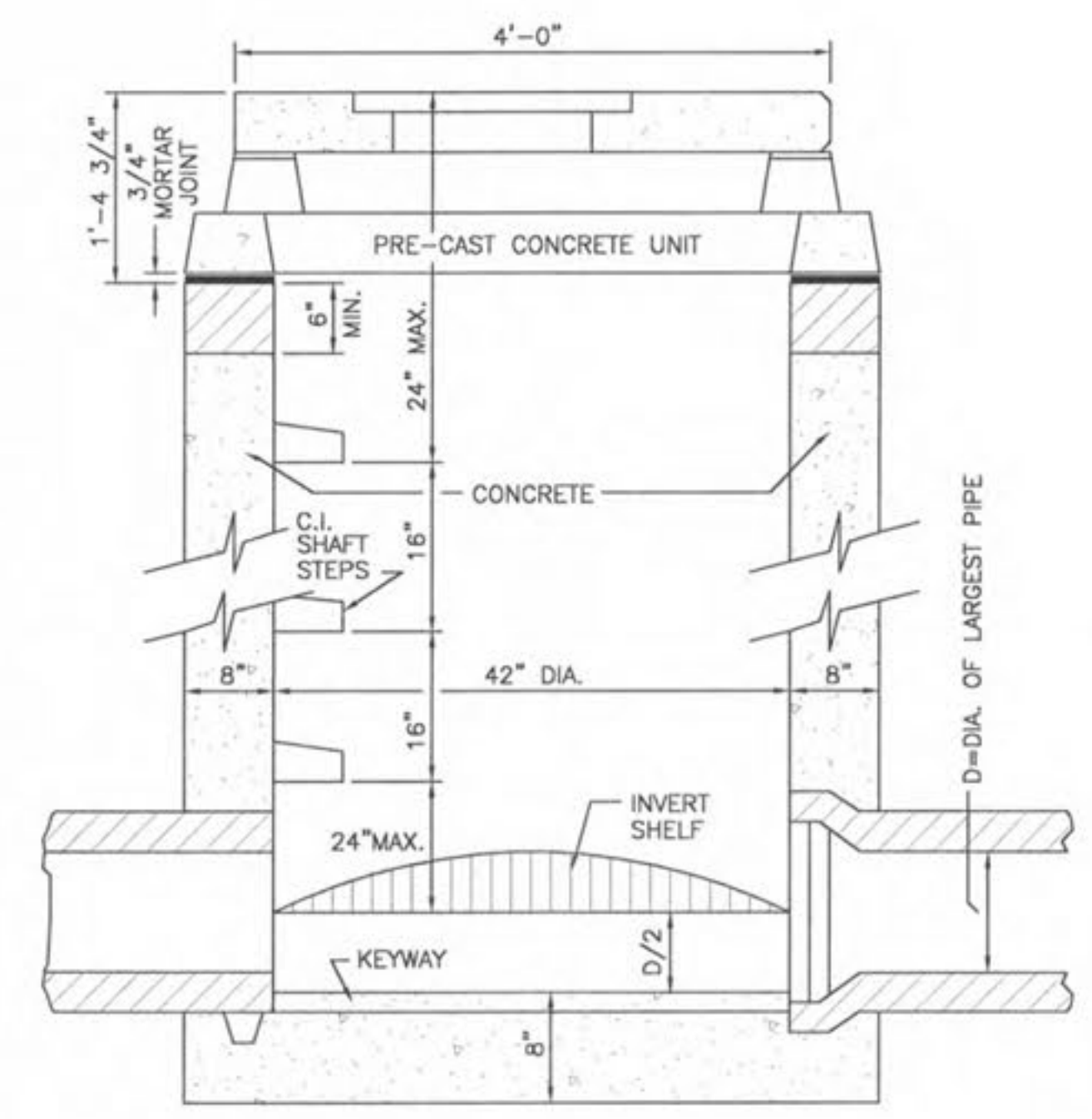
A 5/8" TRASH BAR WILL BE INSTALLED AN CENTERED ACROSS ALL AREA INLET AND CURB INLET OPENINGS



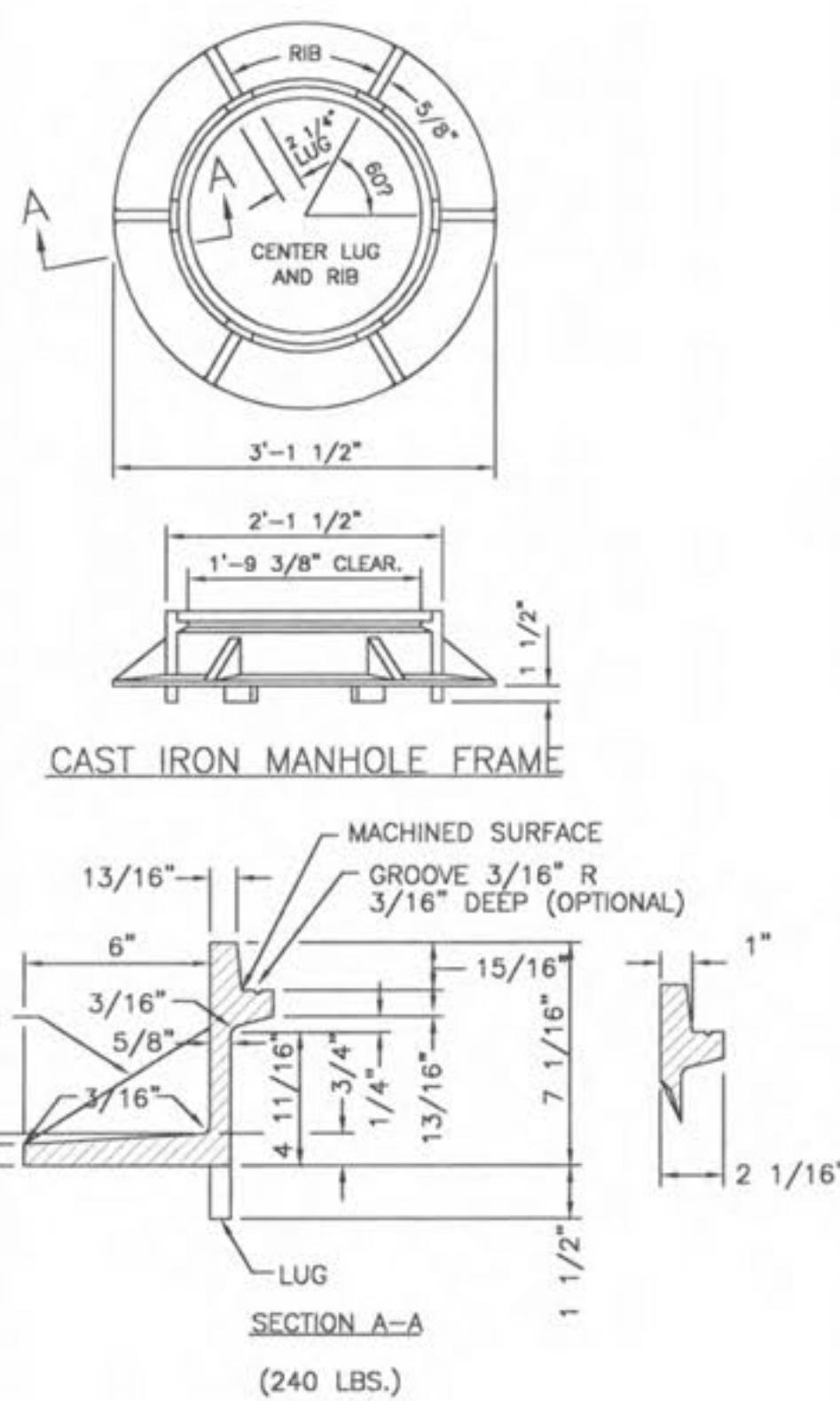
1 MANHOLE DETAIL
SCALE: N.T.S. REF. DWG.



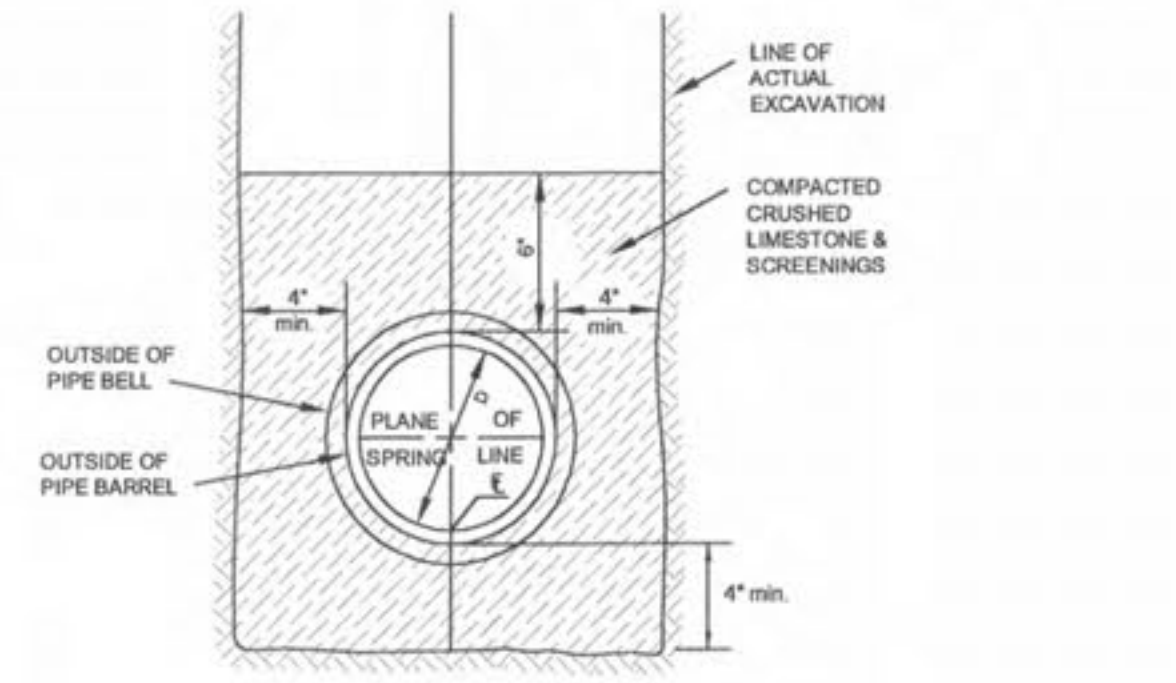
2 DOUBLE CURB INLET
SCALE: N.T.S.



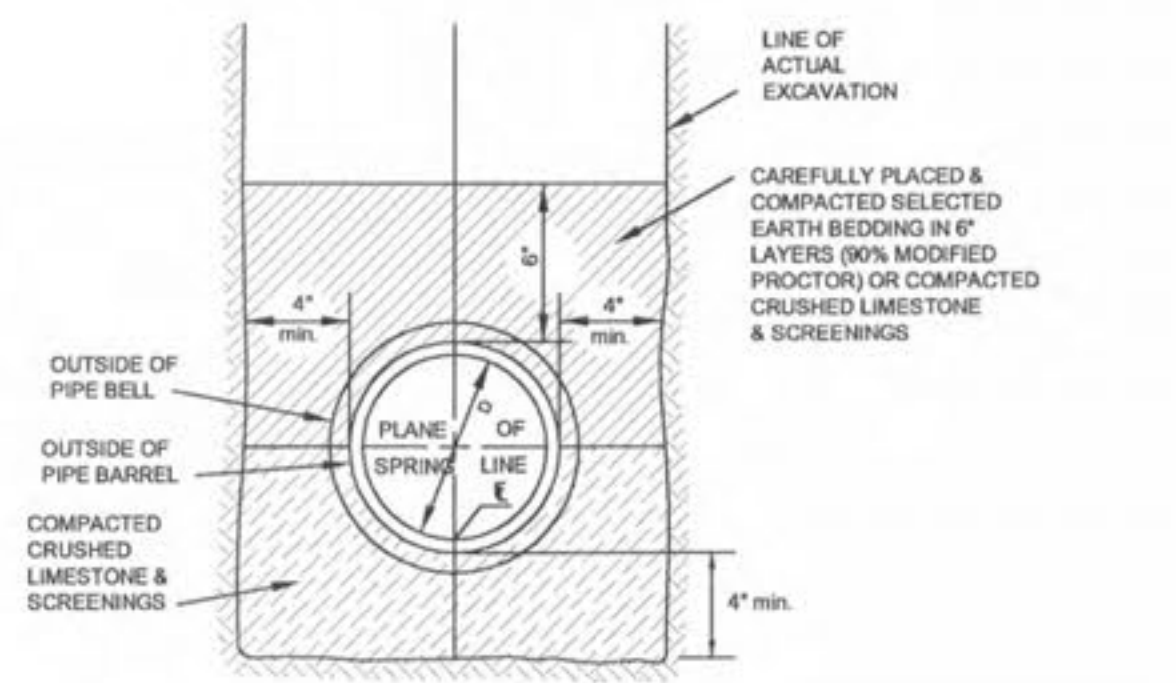
3 AREA INLET DETAIL
SCALE: N.T.S. REF. DWG.



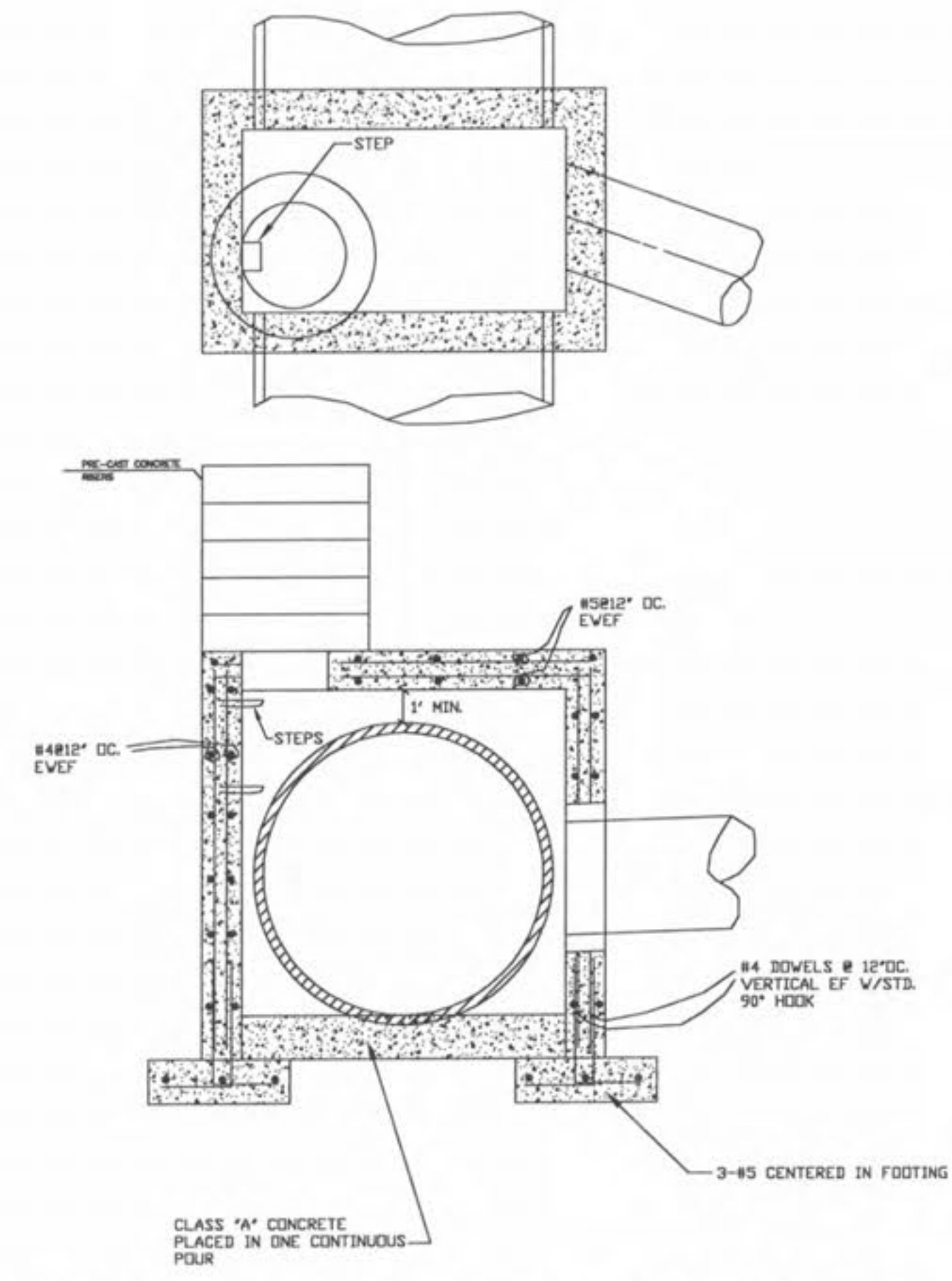
4 CAST IRON MANHOLE FMD FRAME DETAIL
SCALE: N.T.S. REF. DWG.



5 PIPE BEDDING DETAIL (FOR ALL EXCEPT RCP)
SCALE: N.T.S. REF. DWG.



6 PIPE BEDDING DETAIL (FOR RCP)
SCALE: N.T.S. REF. DWG.



7 SPECIAL STRUCTURE DETAIL (TYP.)
SCALE: N.T.S. REF. DWG.

SPECIAL STRUCTURES VARY IN SIZE AND SHAPE IN ACCORDANCE WITH THE CALL OUTS ON THE STORM PROFILES

NO.	DATE	DESCRIPTION
1	12/18/07	ISSUE
2	1/17/08	OWNER COMMENTS/CITY COMMENTS

DEVELOPER/OWNER:
THE JONES COMPANY HOMES, L.L.C.
16640 CHESTERFIELD GROVE, SUITE 200
CHESTERFIELD, MO 63305
PHONE: (636) 537-7192

THE PROFESSIONAL ENGINEER'S SEAL AND SIGNATURE SHALL BE PLACED ON THIS DRAWING. THE ENGINEER ASSUMES RESPONSIBILITY ONLY FOR WHAT APPEARS ON THIS DRAWING. THE ENGINEER DOES NOT ASSUME RESPONSIBILITY FOR ANY OTHER PARTS OF THE PROJECT. ANY PART OF THIS PROJECT TO WHICH THIS DRAWING IS REFERRED SHALL BE THE RESPONSIBILITY OF THE PROFESSIONAL RELATING TO, OR INTENDED TO BE USED FOR, ANY PART OF THIS PROJECT TO WHICH THIS DRAWING IS REFERRED.



PRESTON WOODS - PHASE III
MASS GRADING PLANS
+ PARTIAL STORM SEWER
ST. CHARLES, MO. 63366

planning • engineering • surveying • landscape architecture
Cole and ASSOCIATES
INCORPORATED
10777 sunset office dr.
saint louis, missouri 63127
p. 314 984 9887 f. 314 984 0587

DESIGNED BY: JKW
DRAWN BY: JKW
CHECKED BY: JFH
DATE: 8/13/07

Job Number: 07-0178

Sheet Number: G6.3

USER: Millson TAB: G6.3
DATE: Jan 11, 2008 - 7:51am
DRAWING: S:\005\0052007\07-0178\07-0178\07-0178\MASS GRADING PLANS PHASE III\0_D_Plan_G6.0 DETAILS.dwg