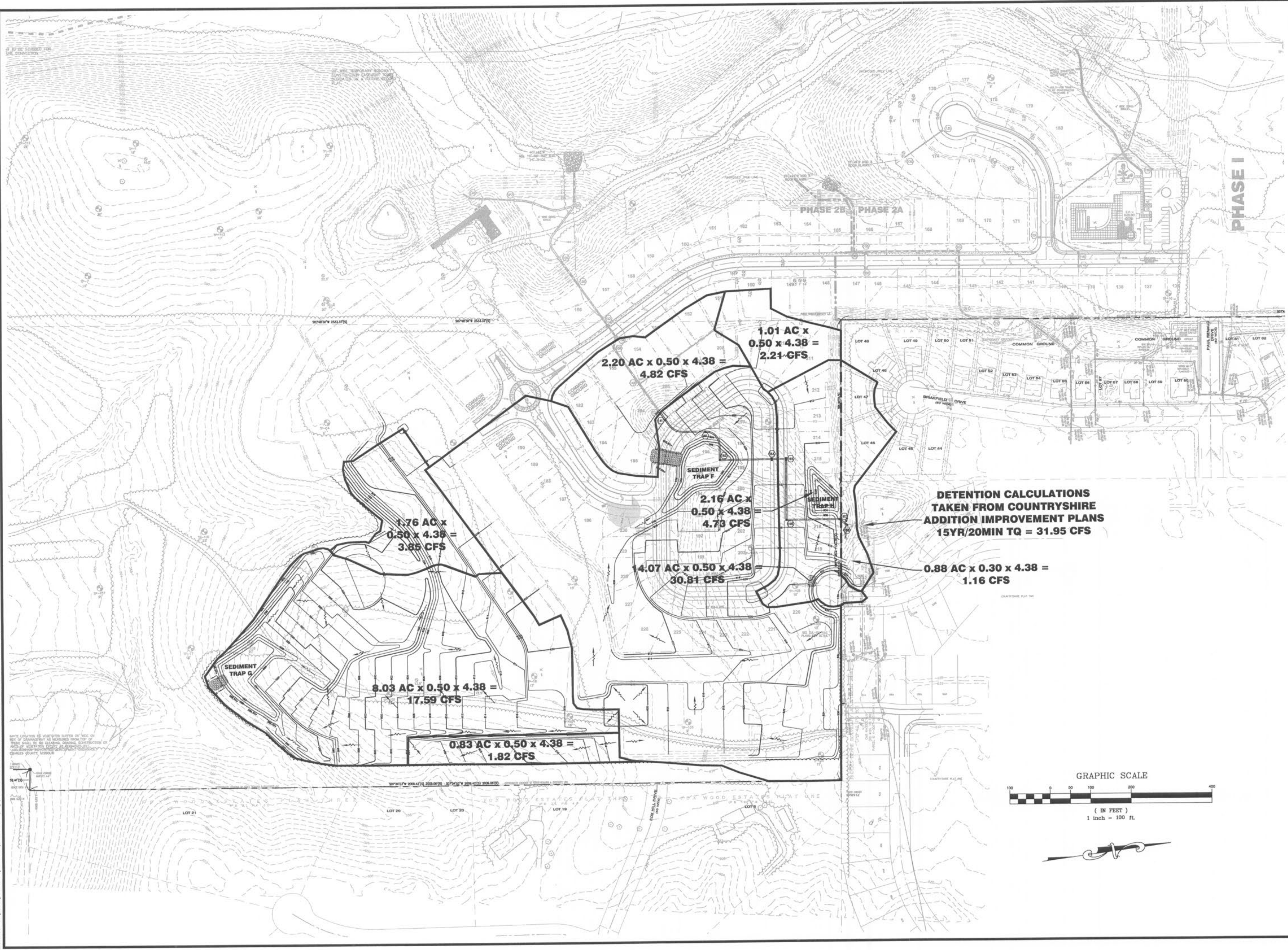


USER: Nelson TAB: G8.0
 DATE: Jun 11, 2008 - 7:53am
 DRAWING: S:\JOBS\2007\07-0178\07-0178.dwg MASS GRADING PLANS PHASE I\G8.0_DAM_INTERIM.dwg



REVISIONS DATE: 1/17/08 BY: A DESCRIPTION: CITY COMMENTS DATE: 1/17/08 BY: A DESCRIPTION: CITY COMMENTS	
DEVELOPER/OWNER: THE JONES COMPANY HOMES, L.L.C. 16640 CHESTERFIELD GROVE, SUITE 200 CHESTERFIELD, MO 63005 PHONE: (636) 537-7192	
SEAL: MIKE E. VONDERHEIDE REGISTERED PROFESSIONAL ENGINEER NUMBER E-23377 1/24/08	
PRESTON WOODS - PHASE III MASS GRADING PLANS + PARTIAL STORM SEWER ST. CHARLES, MO. 63366 INTRIM-DEVELOPED DRAINAGE AREA MAP	
planning • engineering • surveying • landscape architecture Cole and ASSOCIATES INCORPORATED 10777 sunset office dr. saint louis, missouri 63127 p. 314.984.9887 f. 314.984.0567	
DESIGNED BY	JKW
DRAWN BY	JKW
CHECKED BY	JFH
DATE	8/13/07
Job Number	07-0178
Sheet Number	G8.0