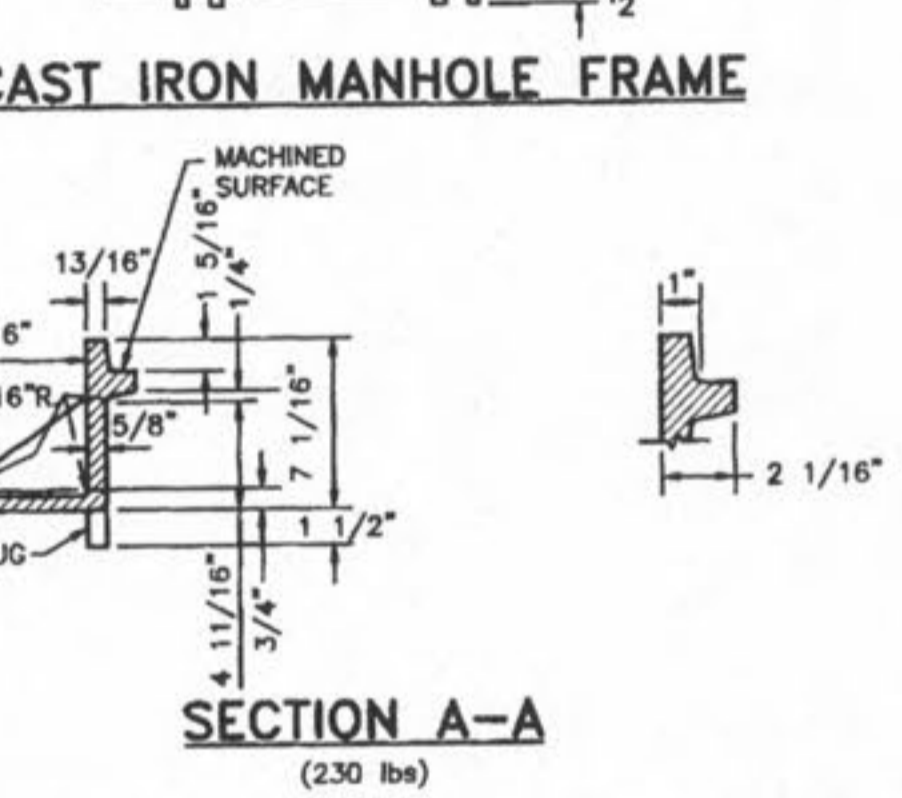
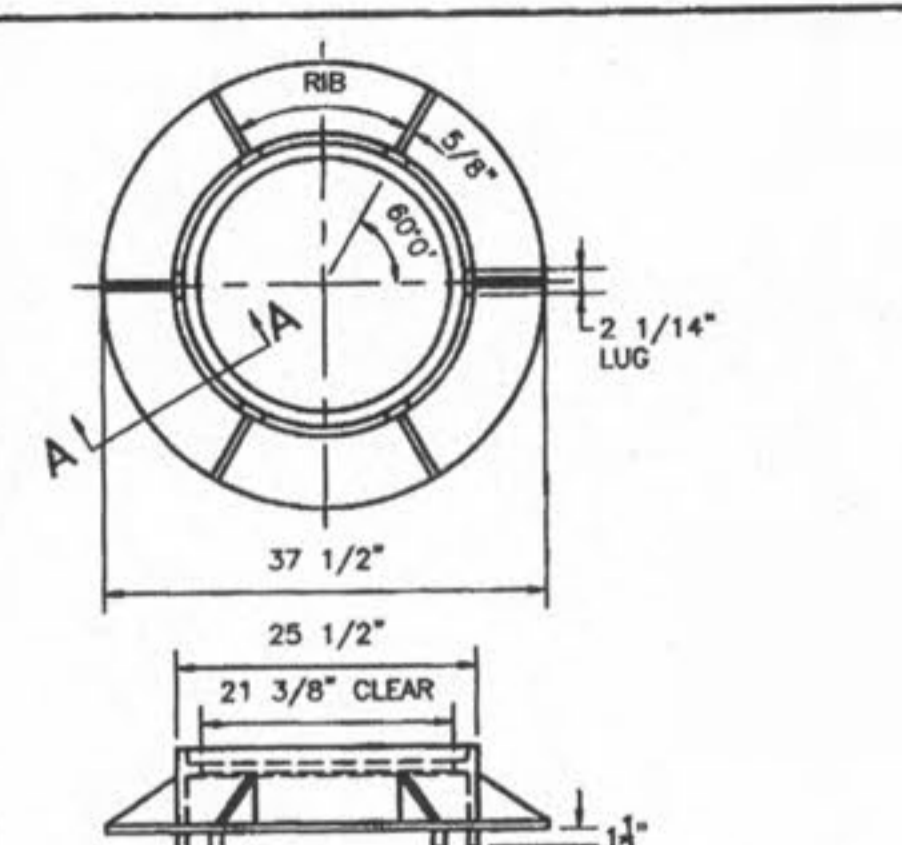


NOTE: ALL INVERTS SHALL HAVE POSITIVE DRAINAGE THROUGH MANHOLE.

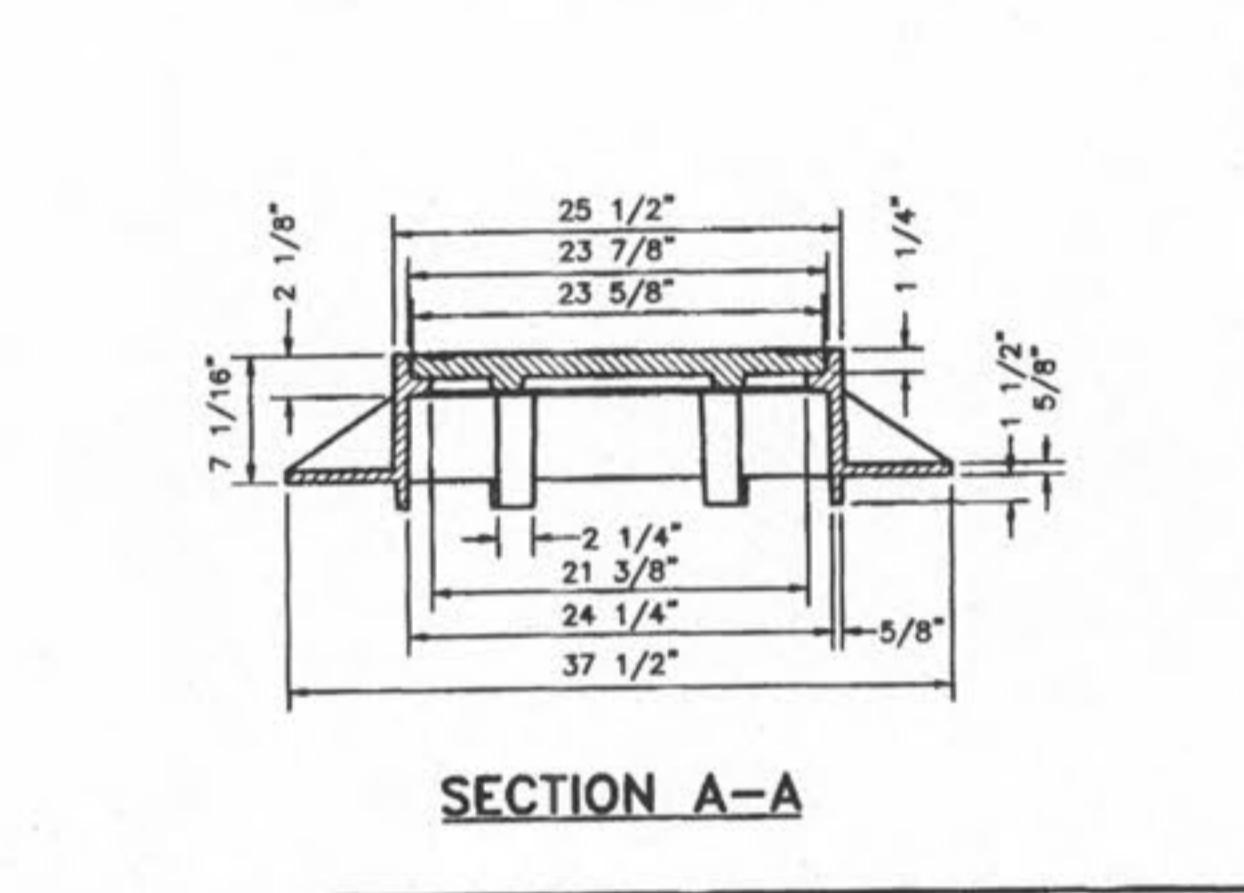
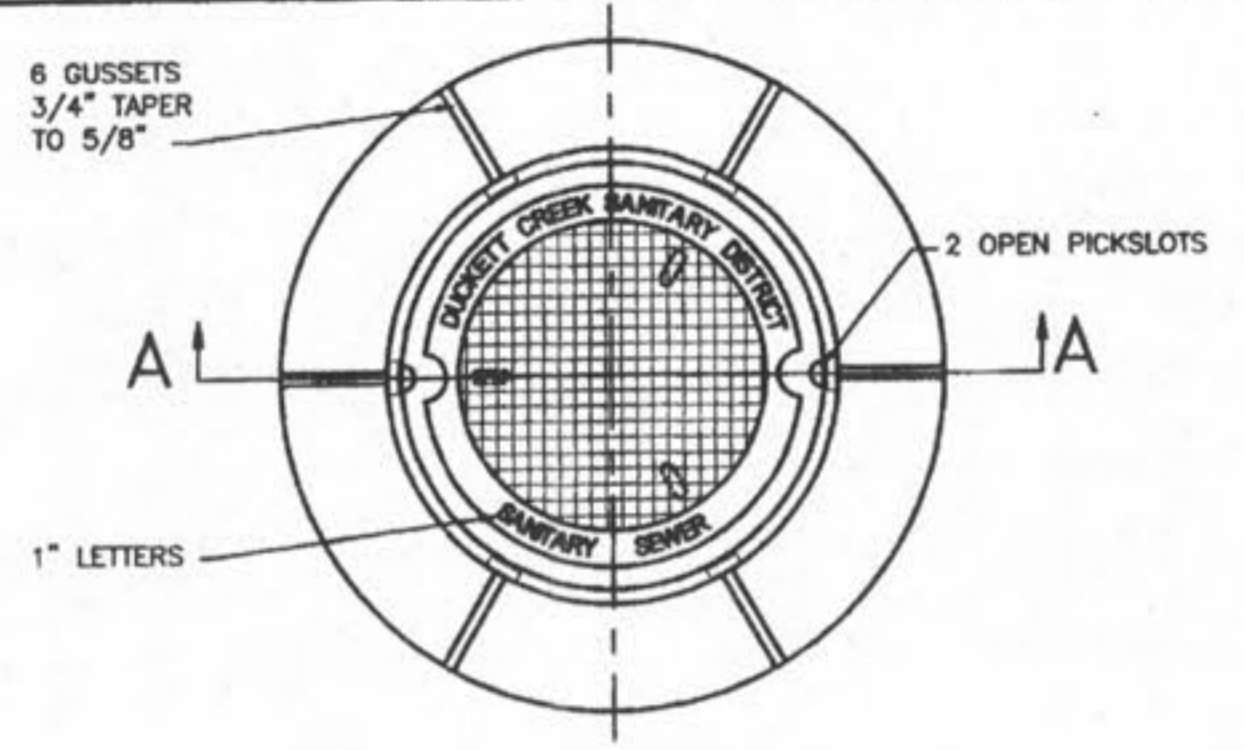
**DUCKETT CREEK SANITARY DISTRICT**

INSIDE DROP MANHOLE	Drawn By: BSM	App By: KLA	Detail No. 10
	Check By: MDOB	Date: 01-10-00	



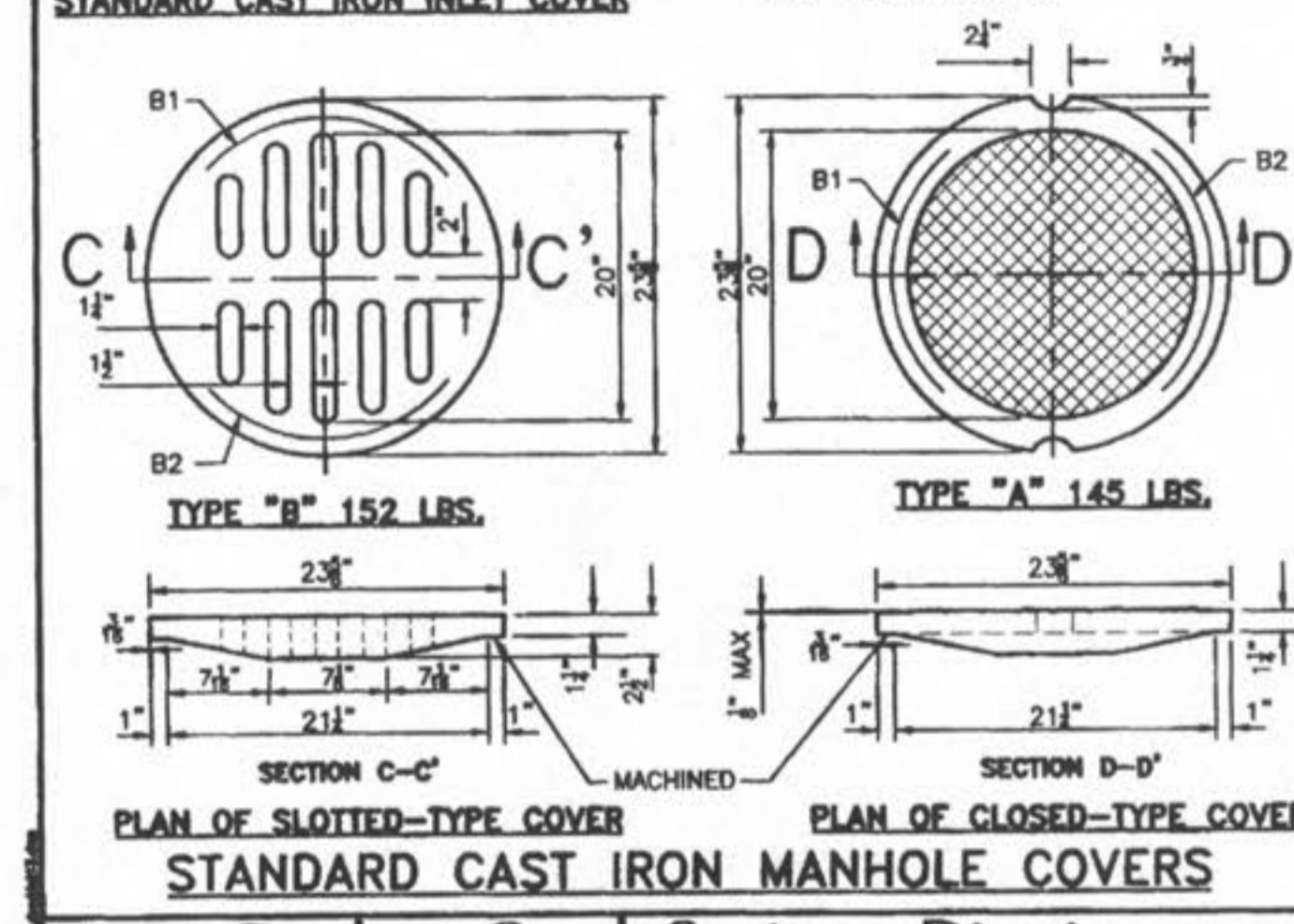
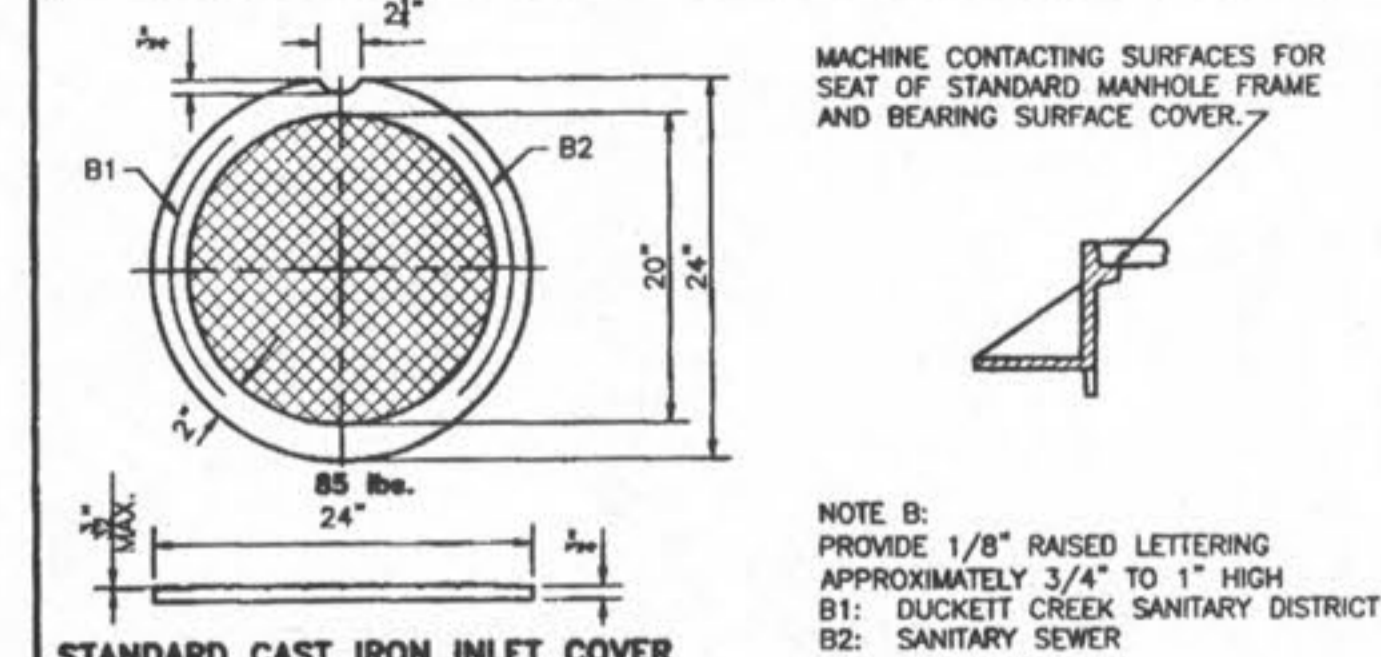
**DUCKETT CREEK SANITARY DISTRICT**

CAST IRON MANHOLE FRAME	Drawn By: BSM	App By: KLA	Detail No. 11
	Check By: MDOB	Date: 01-14-00	



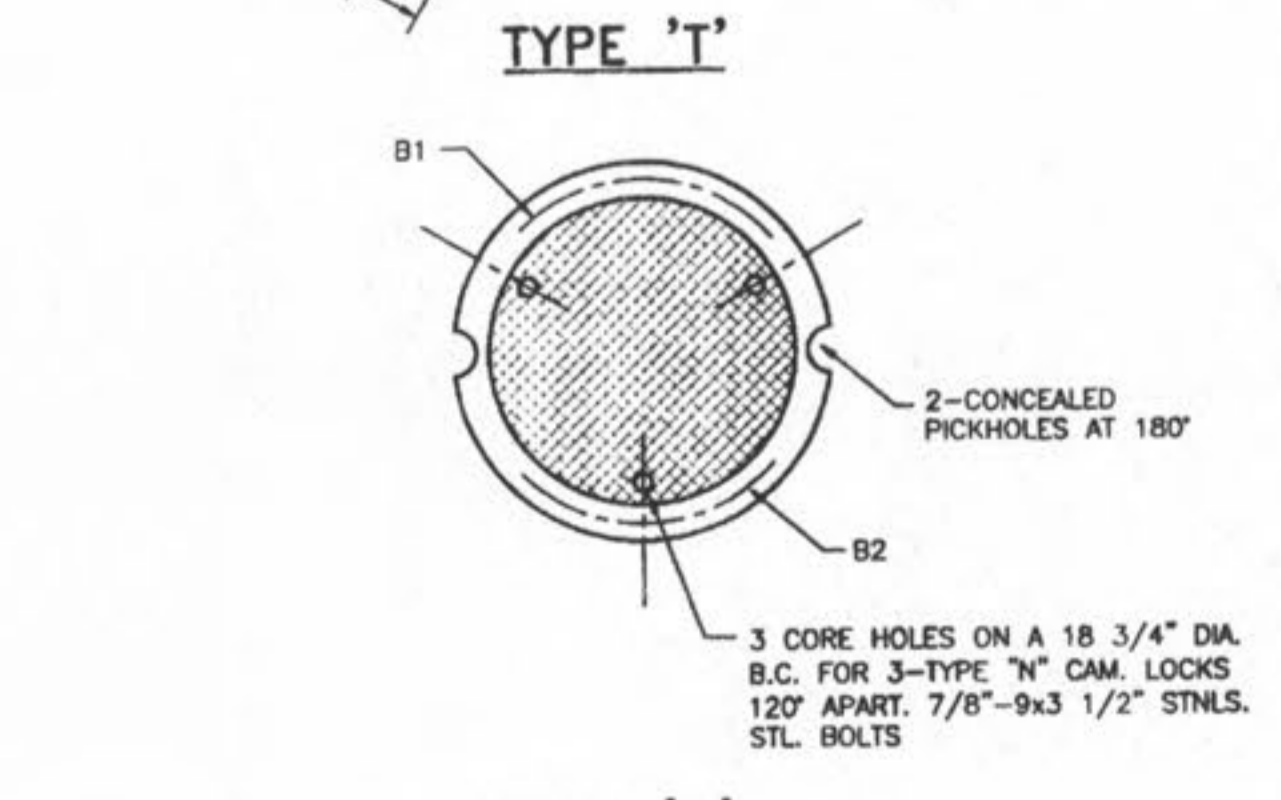
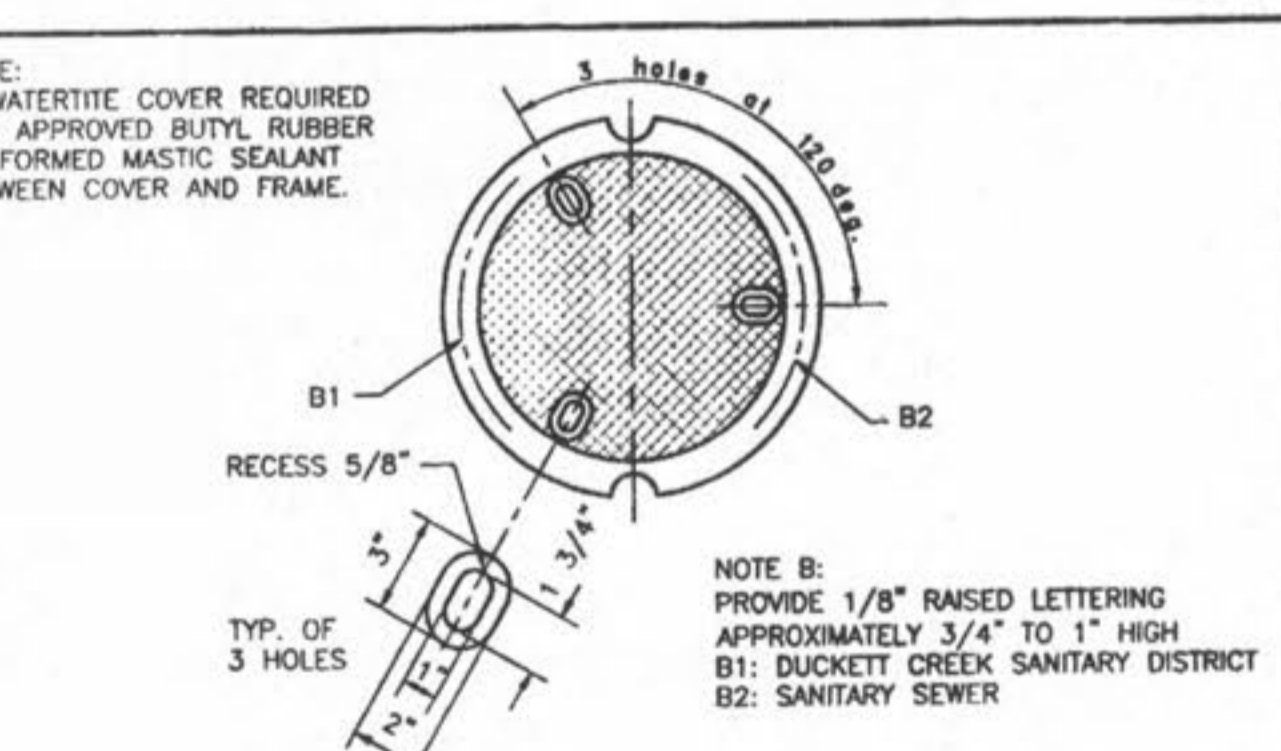
**DUCKETT CREEK SANITARY DISTRICT**

MANHOLE FRAME AND COVER	Drawn By: BSM	App By: KLA	Detail No. 12
	Check By: MDOB	Date: 01-14-00	



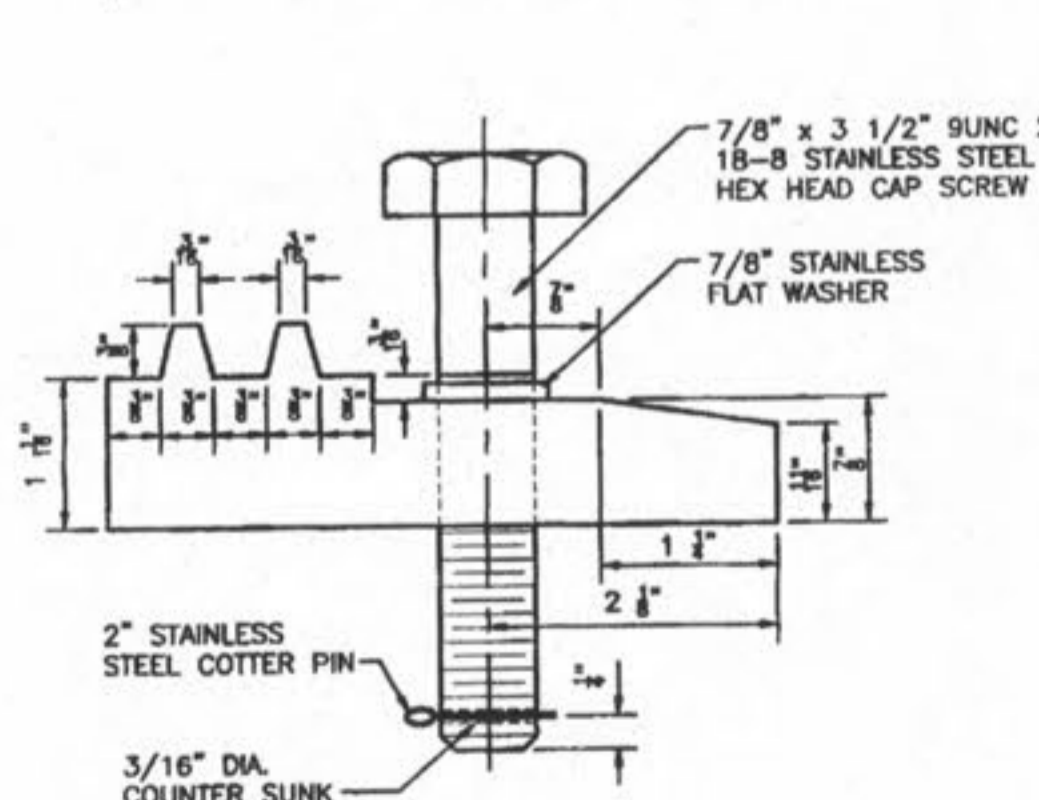
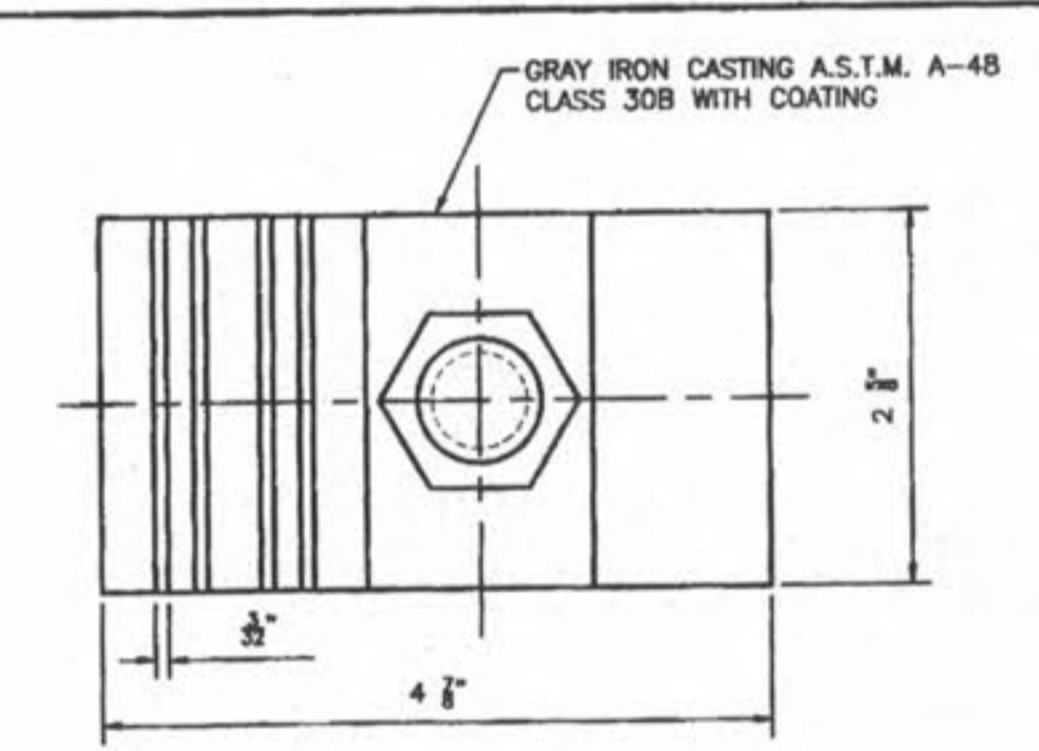
**DUCKETT CREEK SANITARY DISTRICT**

CAST IRON COVERS MANHOLES AND INLETS	Drawn By: BSM	App By: KLA	Detail No. 13
	Check By: MDOB	Date: 12-22-00	



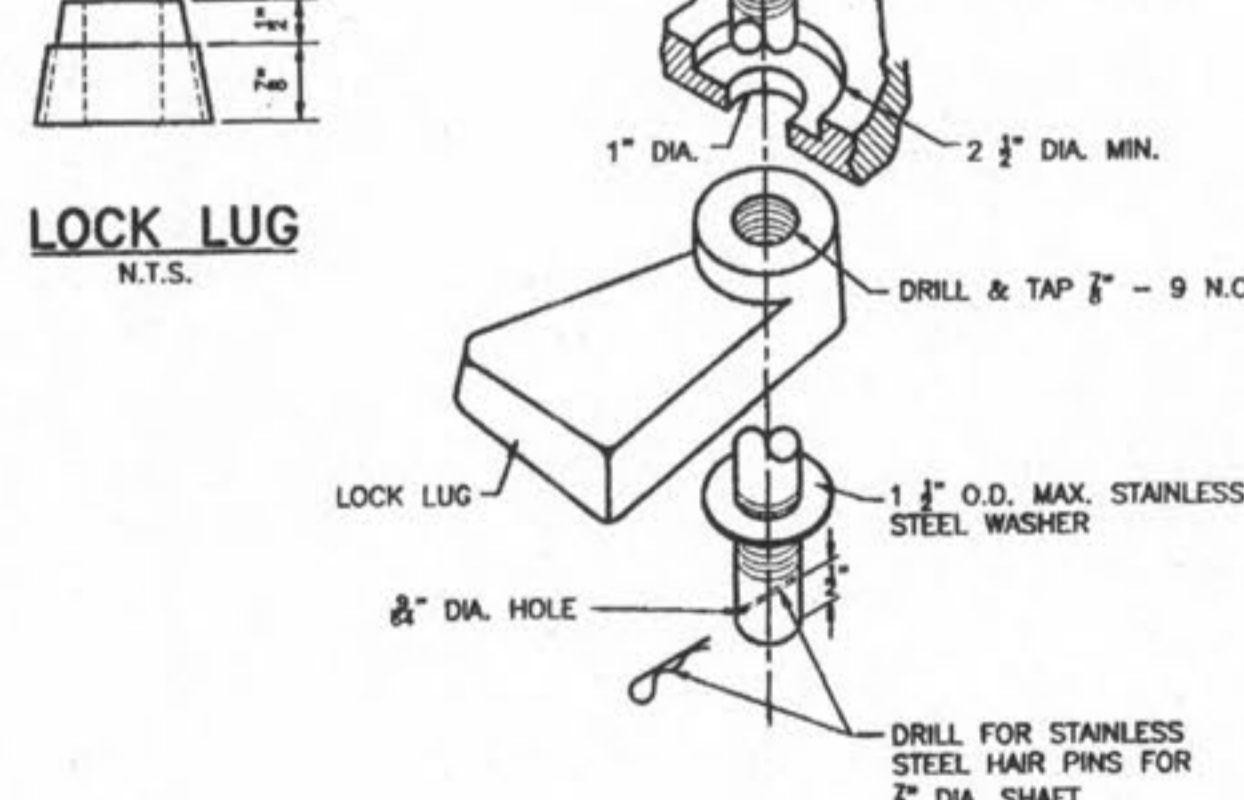
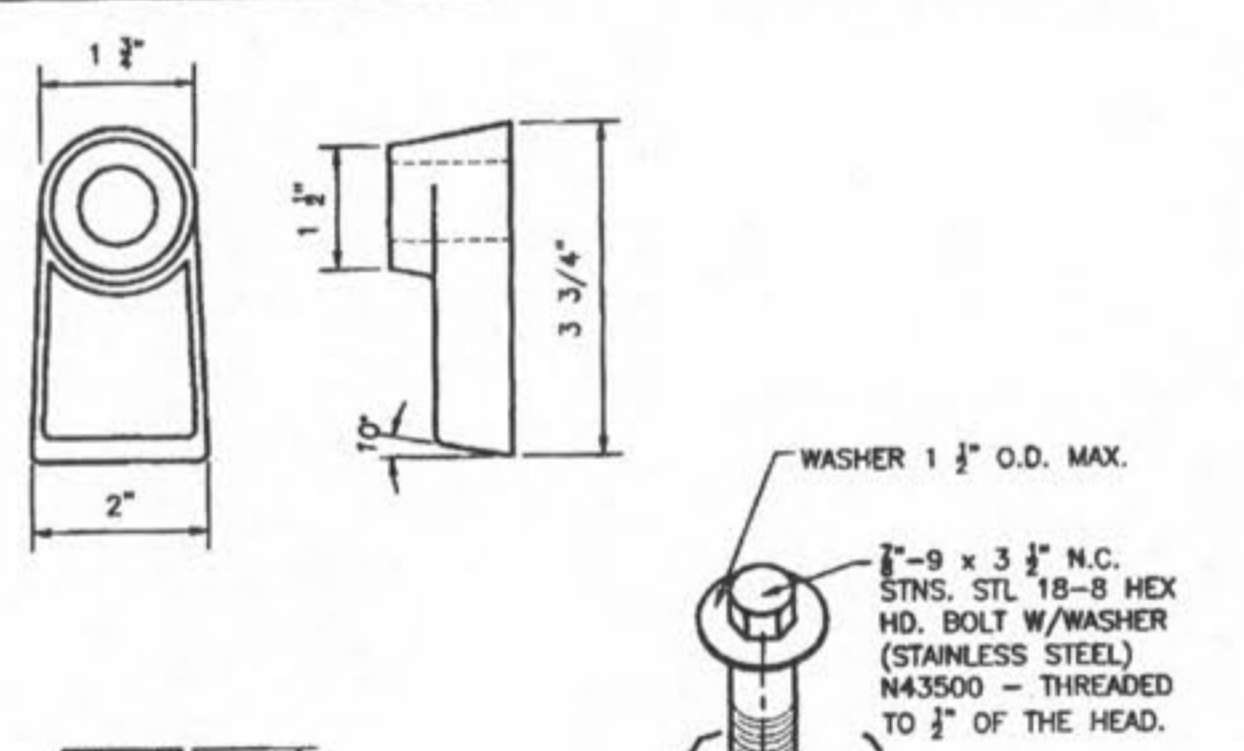
**DUCKETT CREEK SANITARY DISTRICT**

CAST IRON MANHOLE COVERS (LOCK TYPE)	Drawn By: BSM	App By: KLA	Detail No. 14
	Check By: MDOB	Date: 12-27-00	



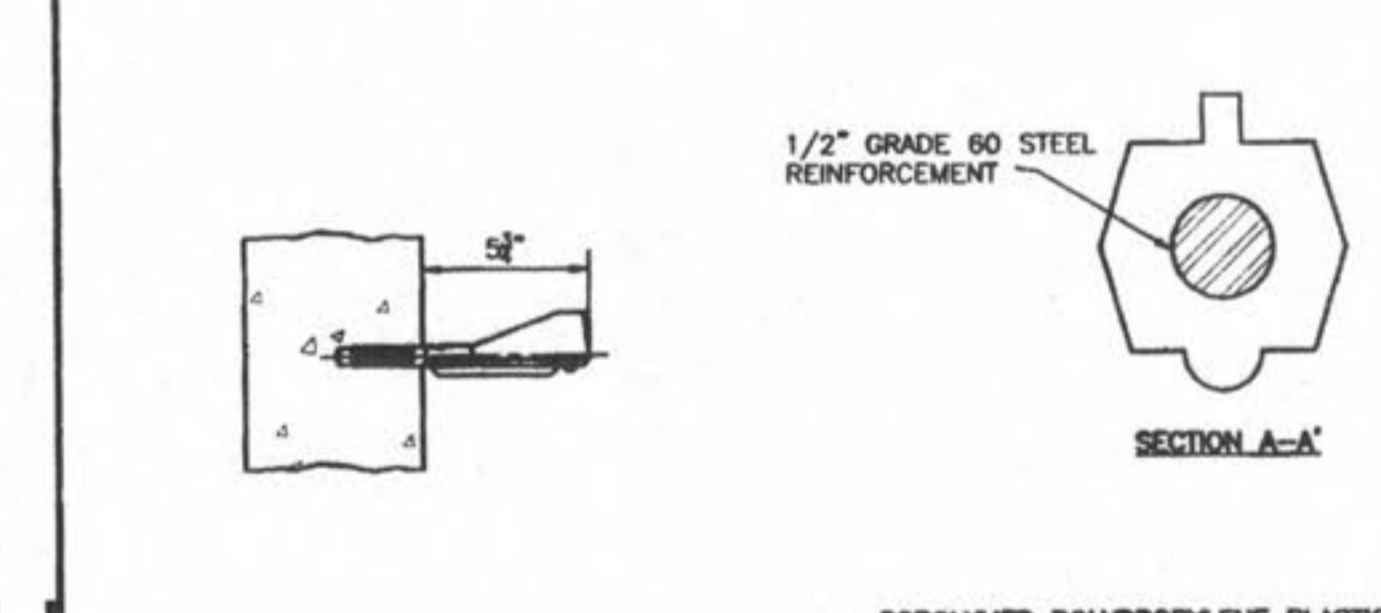
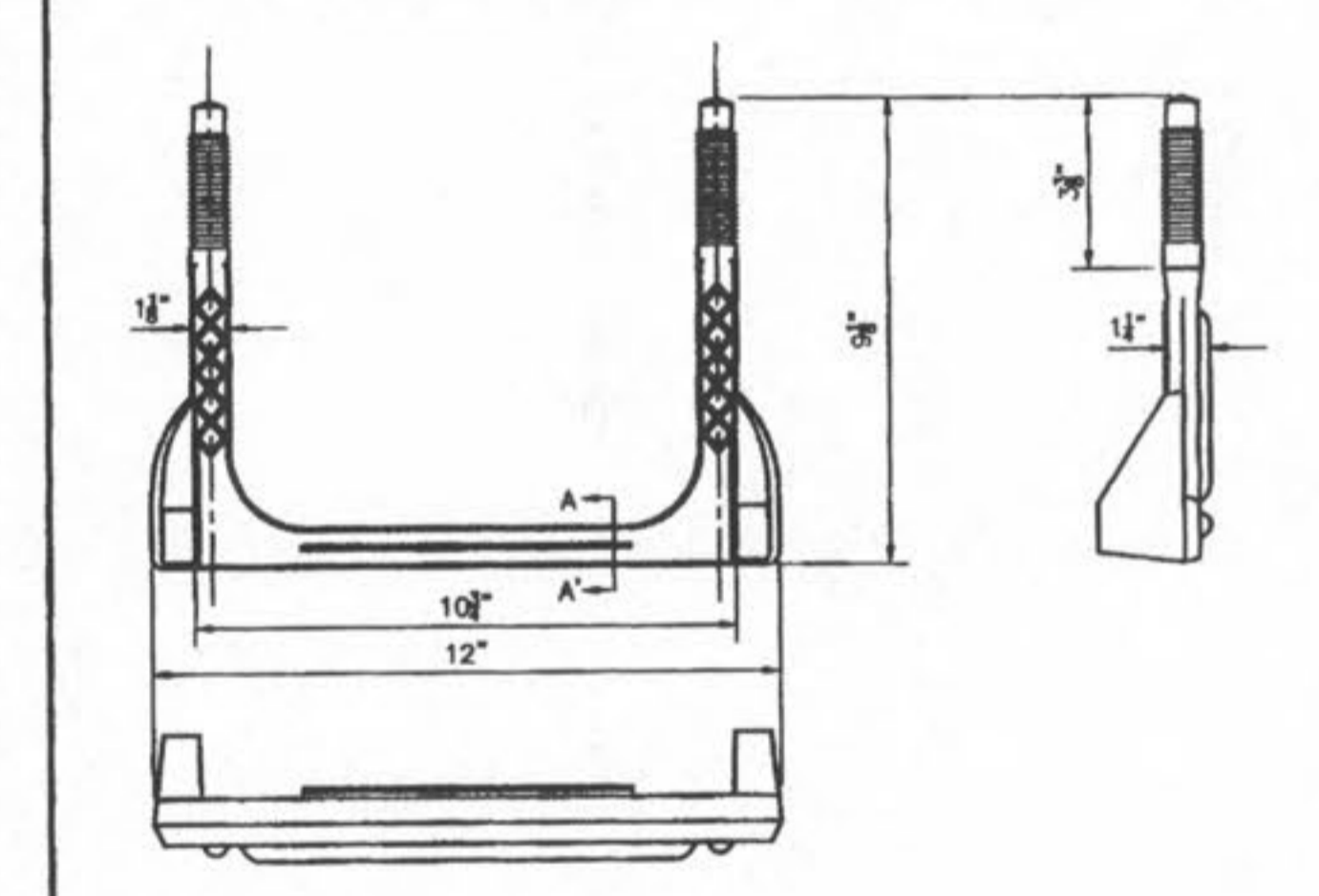
**DUCKETT CREEK SANITARY DISTRICT**

LOCKING DEVICE FOR TYPE "N" LOCK TYPE MANHOLE COVER	Drawn By: BSM	App By: KLA	Detail No. 15
	Check By: MDOB	Date: 12-27-00	



**DUCKETT CREEK SANITARY DISTRICT**

LOCKING DEVICE FOR TYPE "N" LOCK TYPE MANHOLE COVER	Drawn By: BSM	App By: KLA	Detail No. 16
	Check By: MDOB	Date: 12-28-00	



**DUCKETT CREEK SANITARY DISTRICT**

MANHOLE STEP PRECAST MANHOLE	Drawn By: BSM	App By: KLA	Detail No. 18
	Check By: MDOB	Date: 1-3-01	

NOTE: THE DETAILS SHOWN HEREIN ARE FOR THE PURPOSE OF PRIVATE CONSTRUCTION ONLY. PUBLIC CONSTRUCTION WILL REQUIRE STRICT ADHERENCE TO THE DETAILS PUBLISHED BY DUCKETT CREEK AND ST. CHARLES COUNTY.

REVISIONS

NO.	DATE	DESCRIPTION
1	7/10/08	ISSUE FOR BIDDING

DEVELOPER/OWNER:  
**THE JONES COMPANY HOMES, L.L.C.**  
 16640 CHESTERFIELD GROVE, SUITE 200  
 CHESTERFIELD, MO 63005  
 PHONE: (636) 537-7192

DESIGNED BY: JKW  
 DRAWN BY: JKW  
 CHECKED BY: JFH  
 DATE: 4/9/08

Job Number: **08-0033**  
 Sheet Number: **C9.2**

PRESTON WOODS - PHASE 4  
 IMPROVEMENT PLANS  
 PRESTON WOODS LAKE  
 O'FALLON, MO. 63366  
**SANITARY SEWER DETAILS**

planning • engineering • surveying • landscape architecture  
**Cole and Associates INCORPORATED**  
 10777 sunset office dr.  
 saint louis, missouri 63127  
 p: 314 984 9887 f: 314 984 0587