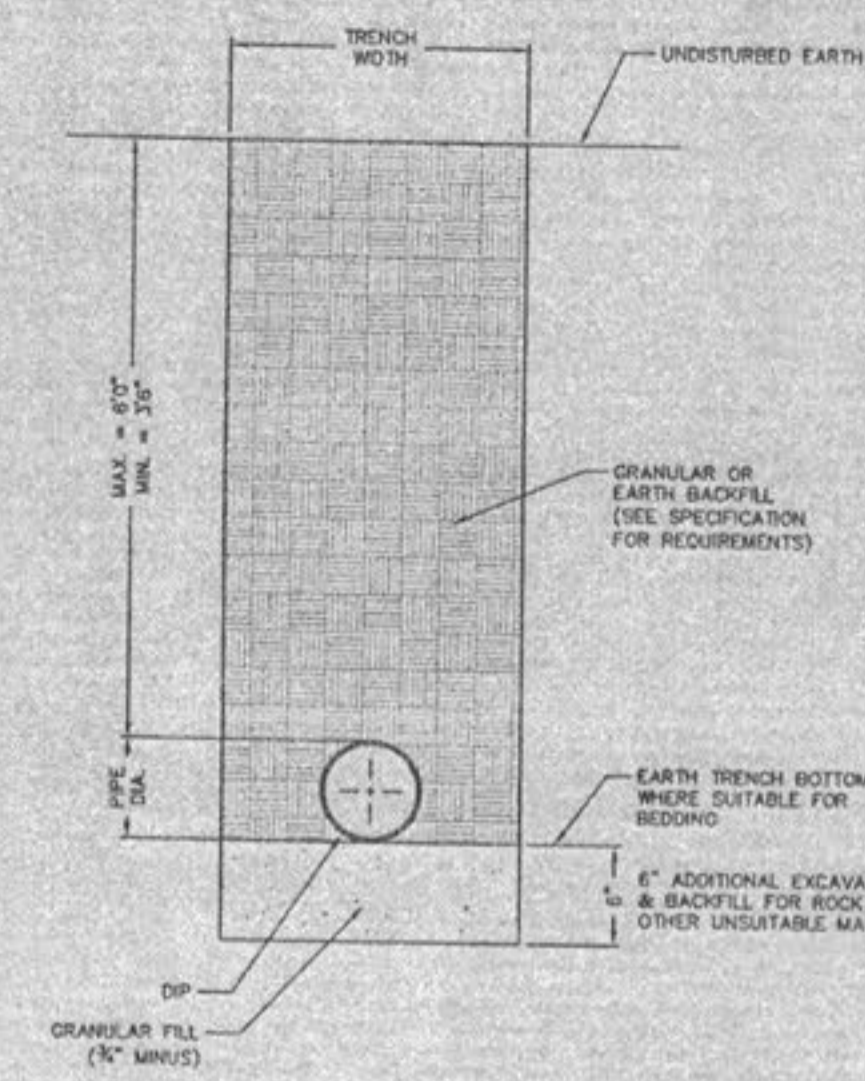
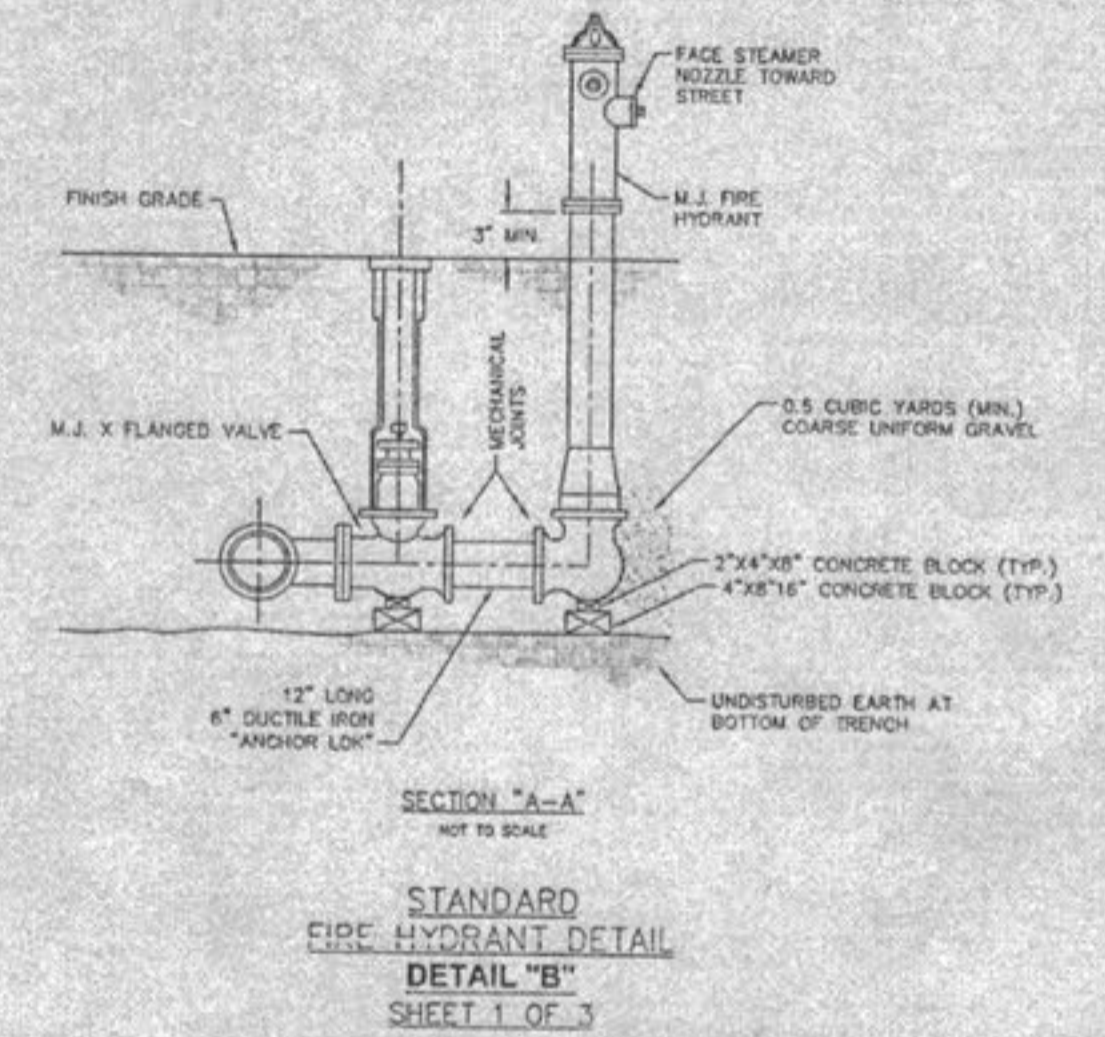
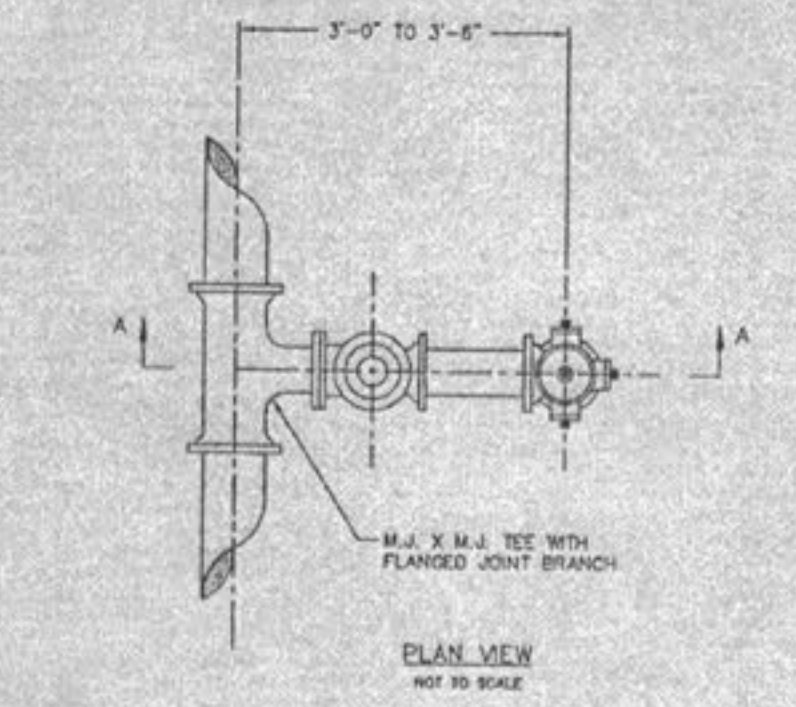


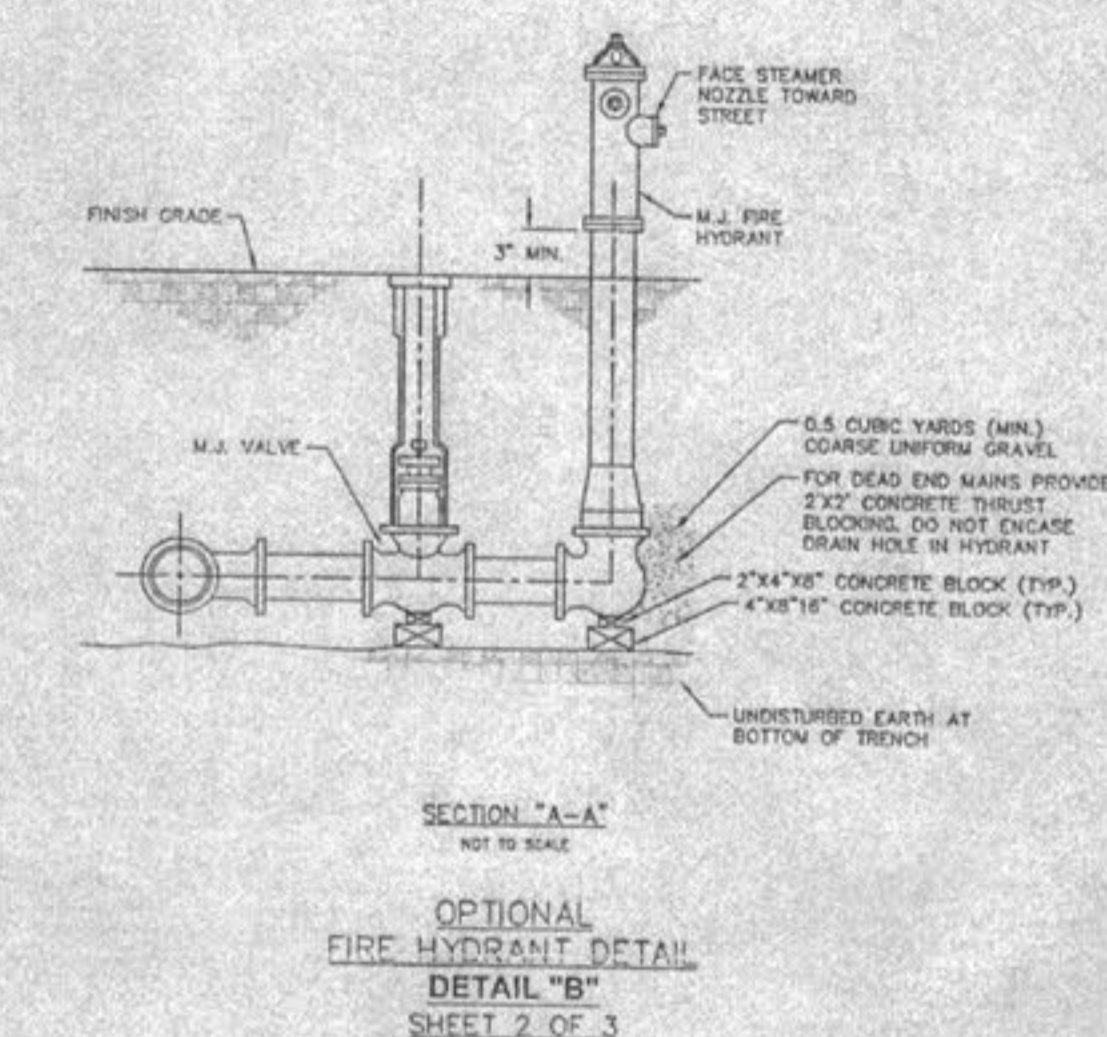
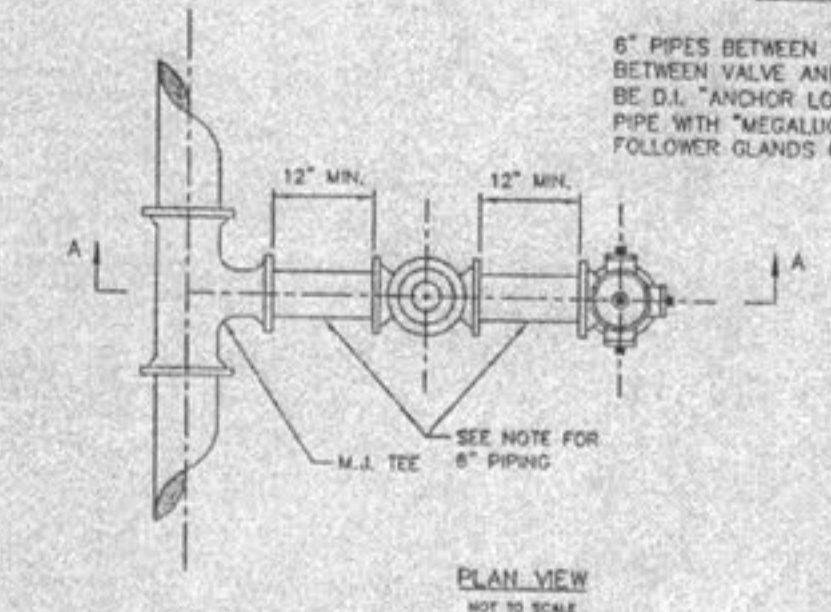
NOTES
 SEE SPECIFICATIONS FOR ADDITIONAL DETAILS FOR BEDDING AND BACKFILL.
TYPICAL TRENCH SECTION FOR PVC PIPE
 NOT TO SCALE
DETAIL "A"
 PAGE 1 OF 2



NOTES
 SEE SPECIFICATIONS FOR ADDITIONAL DETAILS FOR BEDDING AND BACKFILL.
TYPICAL TRENCH SECTION FOR DUCTILE IRON PIPE
 NOT TO SCALE
DETAIL "A"
 PAGE 2 OF 2

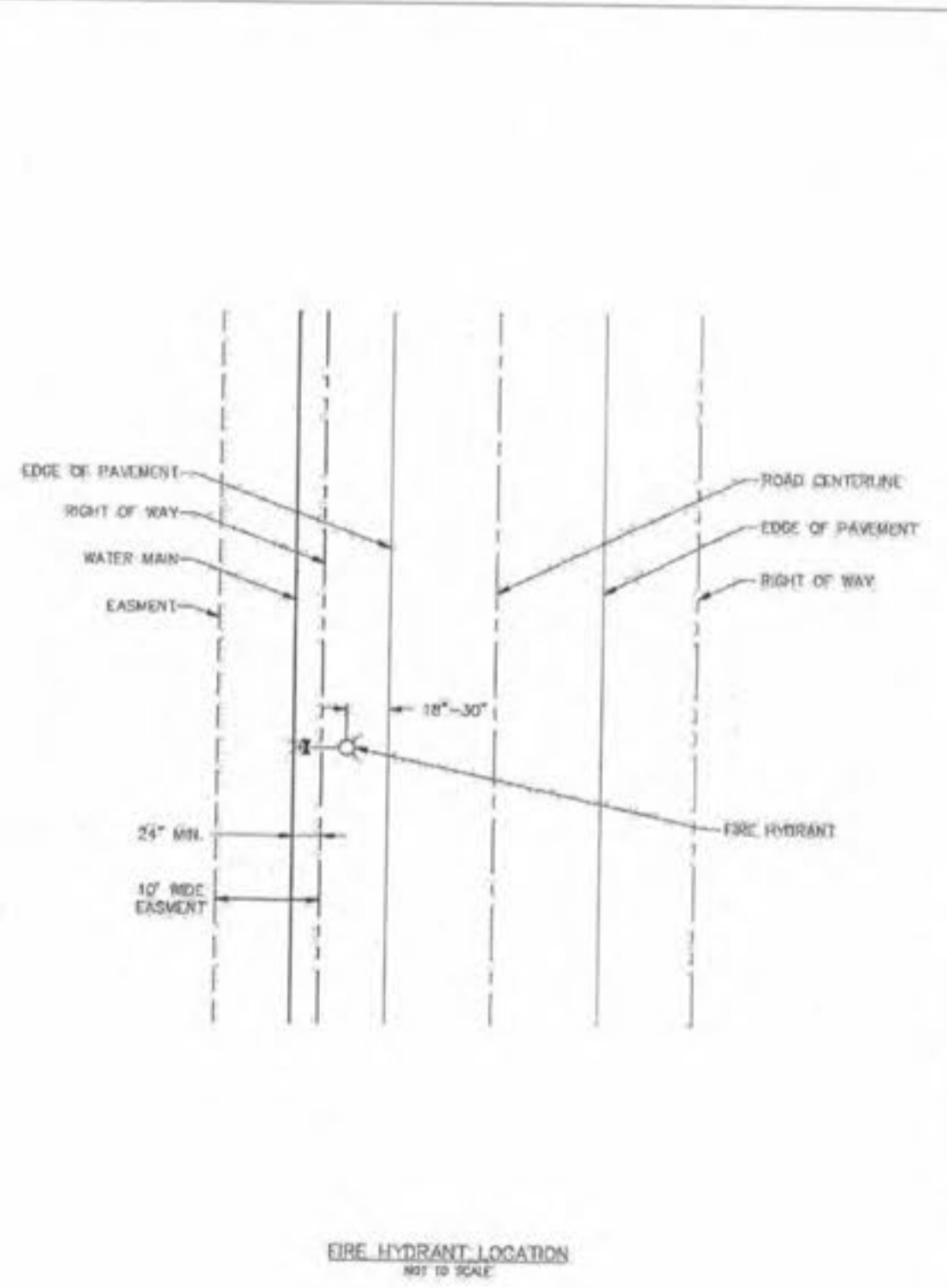


SECTION "A-A"
 NOT TO SCALE
STANDARD FIRE HYDRANT DETAIL
DETAIL "B"
 SHEET 1 OF 3

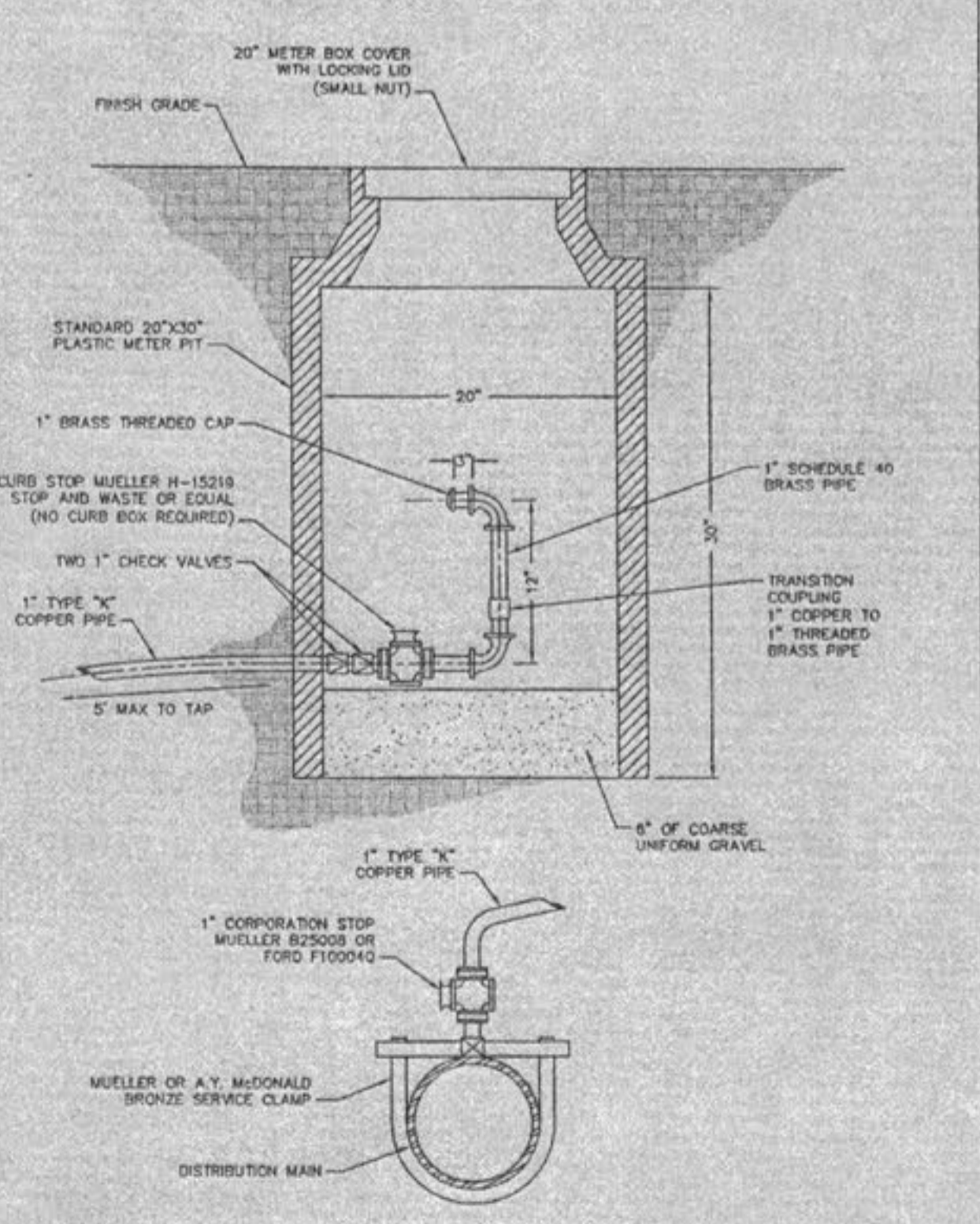


SECTION "A-A"
 NOT TO SCALE
OPTIONAL FIRE HYDRANT DETAIL
DETAIL "B"
 SHEET 2 OF 3

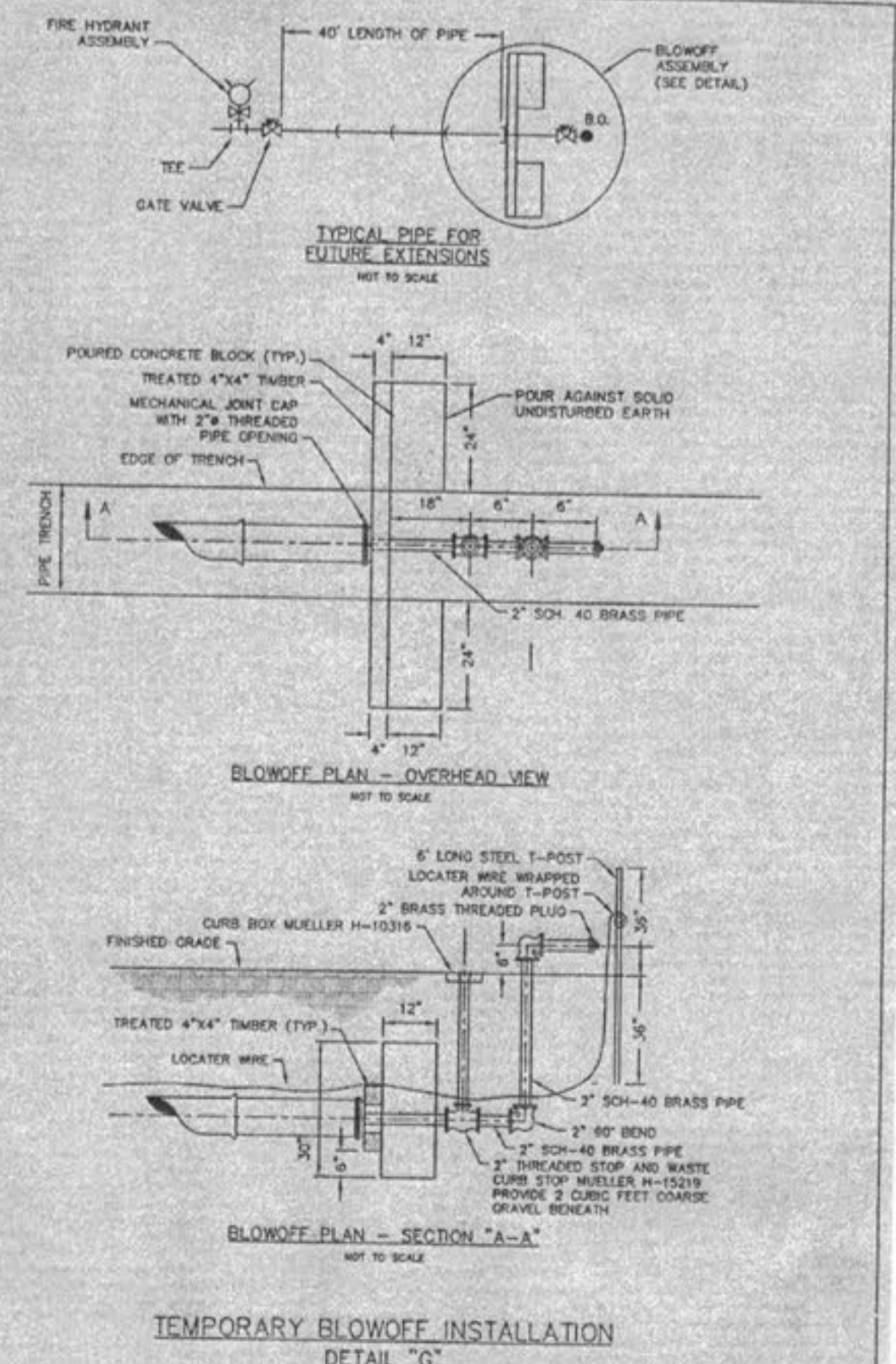
NOTES
 6" PIPES BETWEEN TEE AND VALVE AND BETWEEN VALVE AND FIRE HYDRANT SHALL BE D.I. "ANCHOR LOCK" OR DUCTILE IRON PIPE WITH "MEGALUG" RESTRAINER FOLLOWER GLANDS ON ALL M.J. JOINTS.



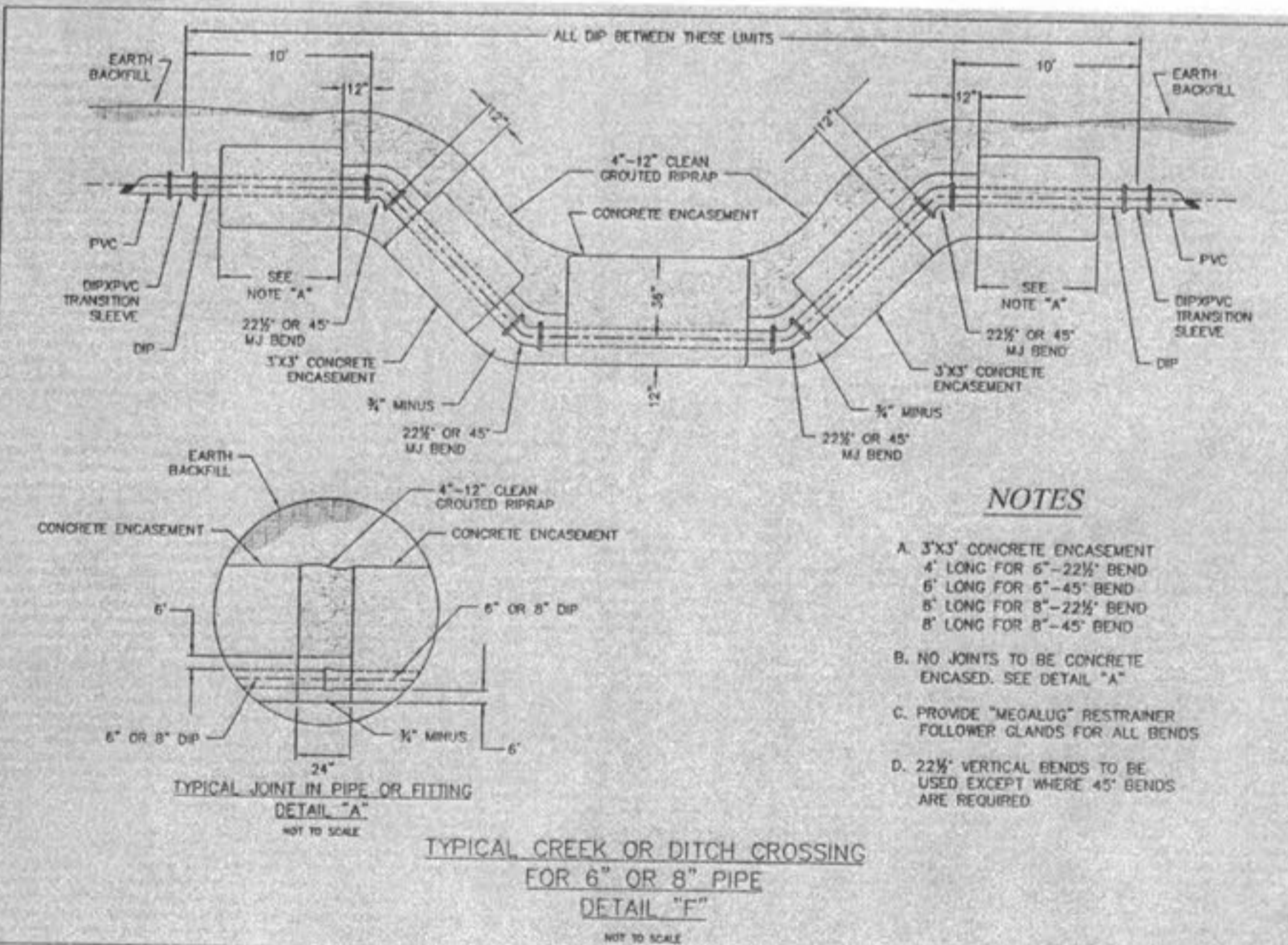
LOCATION FIRE HYDRANT DETAIL
DETAIL "B"
 SHEET 3 OF 3



MANUAL AIR RELEASE DEVICE
DETAIL "C"
 NOT TO SCALE



TEMPORARY BLOWOFF INSTALLATION
DETAIL "G"
 NOT TO SCALE



NOTES
 A. 3"x3" CONCRETE ENCASEMENT 4' LONG FOR 6"-22 1/2° BEND 6' LONG FOR 6"-45° BEND 8' LONG FOR 8"-22 1/2° BEND 8' LONG FOR 8"-45° BEND
 B. NO JOINTS TO BE CONCRETE ENCASED. SEE DETAIL "A"
 C. PROVIDE "MEGALUG" RESTRAINER FOLLOWER GLANDS FOR ALL BENDS
 D. 22 1/2° VERTICAL BENDS TO BE USED EXCEPT WHERE 45° BENDS ARE REQUIRED

TYPICAL JOINT IN PIPE OR FITTING
DETAIL "A"
 NOT TO SCALE
TYPICAL CREEK OR DITCH CROSSING
FOR 6" OR 8" PIPE
DETAIL "F"
 NOT TO SCALE

USER: Nelson TAB; WATER DETAIL 9.11
 DATE: Jul 10, 2008 — 10:00am
 DRAWING: S:\JOBS\19849867\198-0033\CB-0033\dwg\IMPROVEMENT PLANS PHASE 4\O_IPLAN_CB_00_DETAILS.dwg

DEVELOPED BY OWNER: THE JONES COMPANY HOMES, L.L.C. 16640 CHESTERFIELD GROVE, SUITE 200 CHESTERFIELD, MO 63005 PHONE: (636) 537-7192	REVISIONS DATE BY CITY COMMENTS
	DESIGNED BY JKW
DRAWN BY JKW	CHECKED BY JFH
DATE 4/9/08	JOB NUMBER 08-0033
SHEET NUMBER C9.11	SHEET TITLE WATER DETAILS
planning • engineering • surveying • landscape architecture Cole and Associates Incorporated 10777 sunset office dr. saint louis missouri 63127 p: 314 984 9867 f: 314 984 0687	