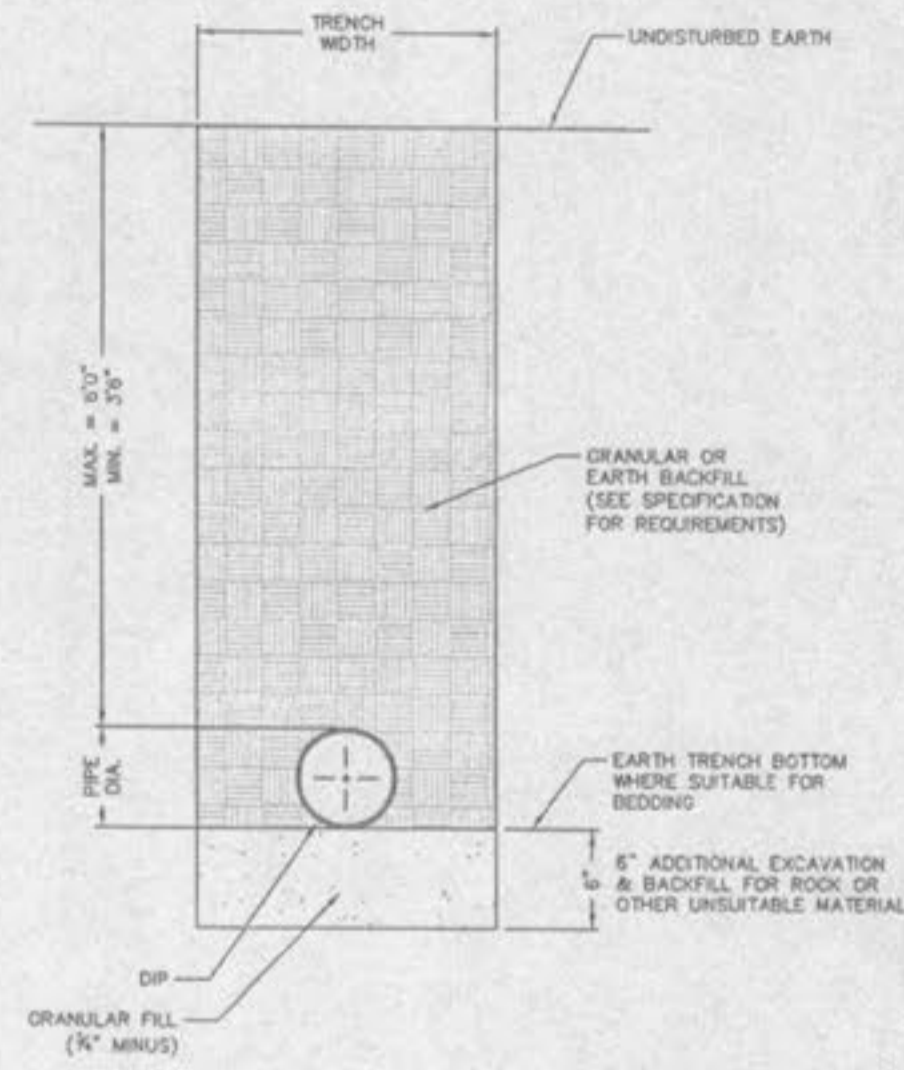


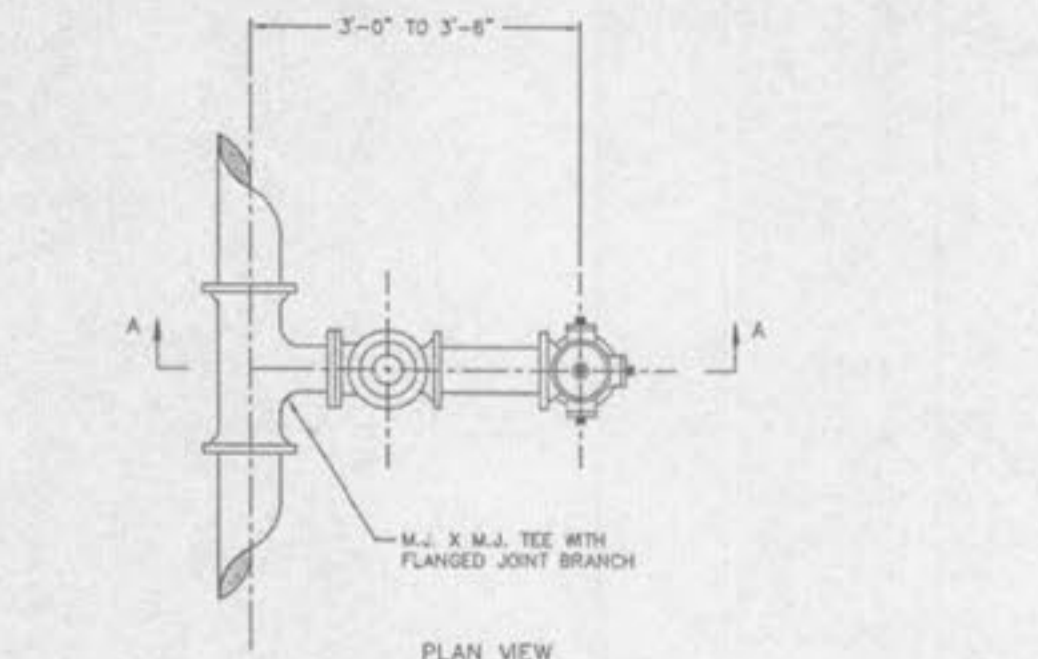
NOTES

SEE SPECIFICATIONS FOR ADDITIONAL DETAILS FOR BEDDING AND BACKFILL.
TYPICAL TRENCH SECTION FOR PVC PIPE
 NOT TO SCALE
DETAIL "A"
 PAGE 1 OF 2

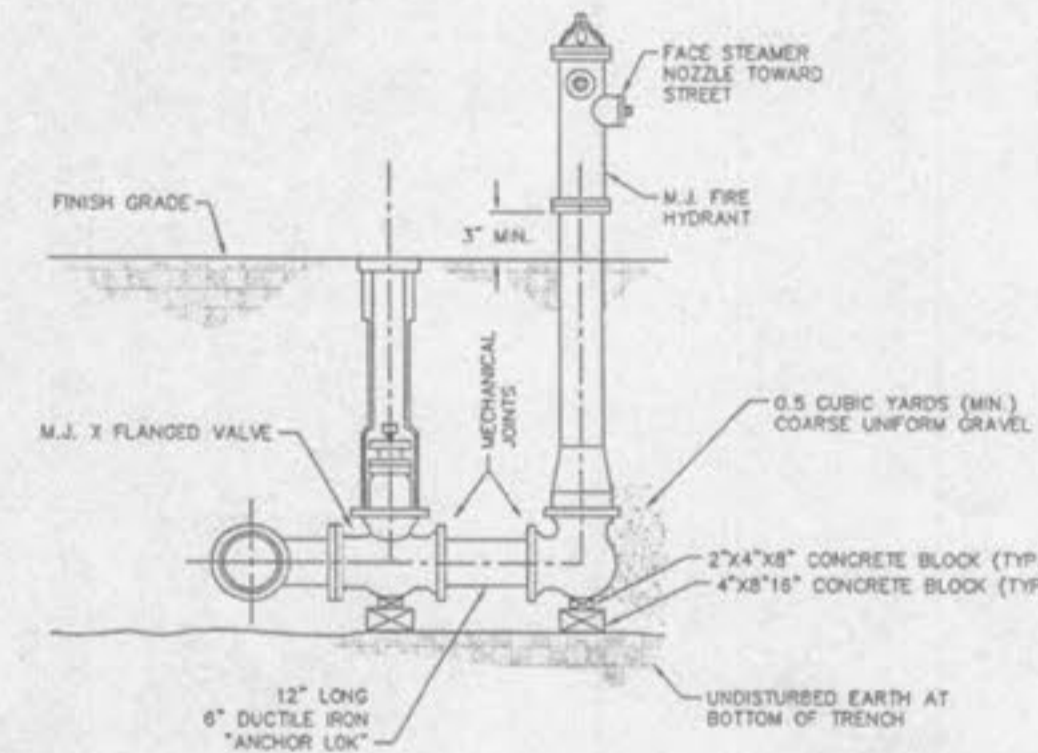


NOTES

SEE SPECIFICATIONS FOR ADDITIONAL DETAILS FOR BEDDING AND BACKFILL.
TYPICAL TRENCH SECTION FOR DUCTILE IRON PIPE
 NOT TO SCALE
DETAIL "A"
 PAGE 2 OF 2

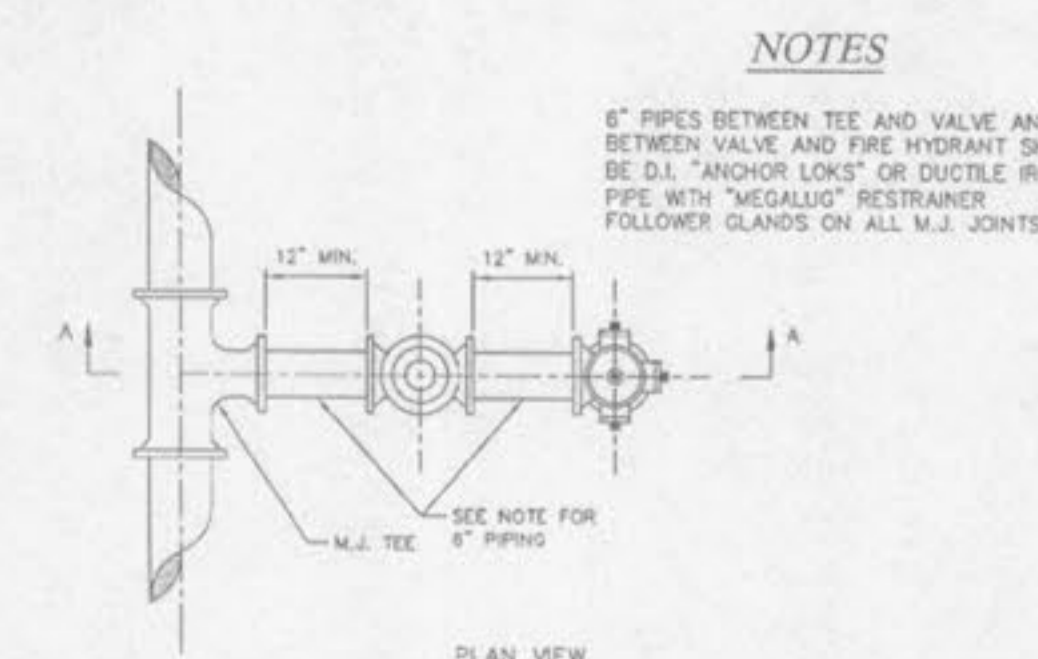


PLAN VIEW
NOT TO SCALE

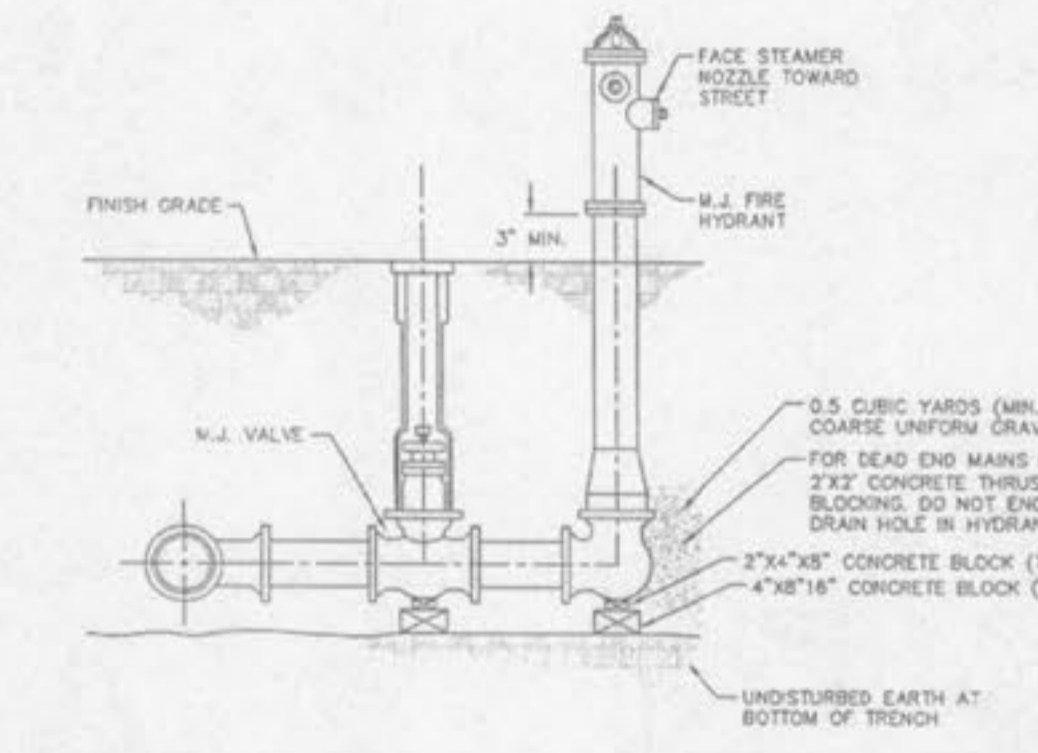


SECTION "A-A"
NOT TO SCALE

STANDARD FIRE HYDRANT DETAIL
DETAIL "B"
 SHEET 1 OF 3



PLAN VIEW
NOT TO SCALE



SECTION "A-A"
NOT TO SCALE

OPTIONAL FIRE HYDRANT DETAIL
DETAIL "B"
 SHEET 2 OF 3

NOTES
 6" PIPES BETWEEN TEE AND VALVE AND BETWEEN VALVE AND FIRE HYDRANT SHALL BE D.I. "ANCHOR LOKS" OR DUCTILE IRON PIPE WITH "MEGALUG" RESTRAINER FOLLOWER GLANDS ON ALL M.J. JOINTS.

NO.	REVISION DESCRIPTION	DATE
1	CITY COMMENTS	12/7/10

DEVELOPER/OWNER
PULTE GROUP
 16640 CHESTERFIELD GROVE SUITE 200
 CHESTERFIELD, MO 63005
 PHONE: (636) 637-7129

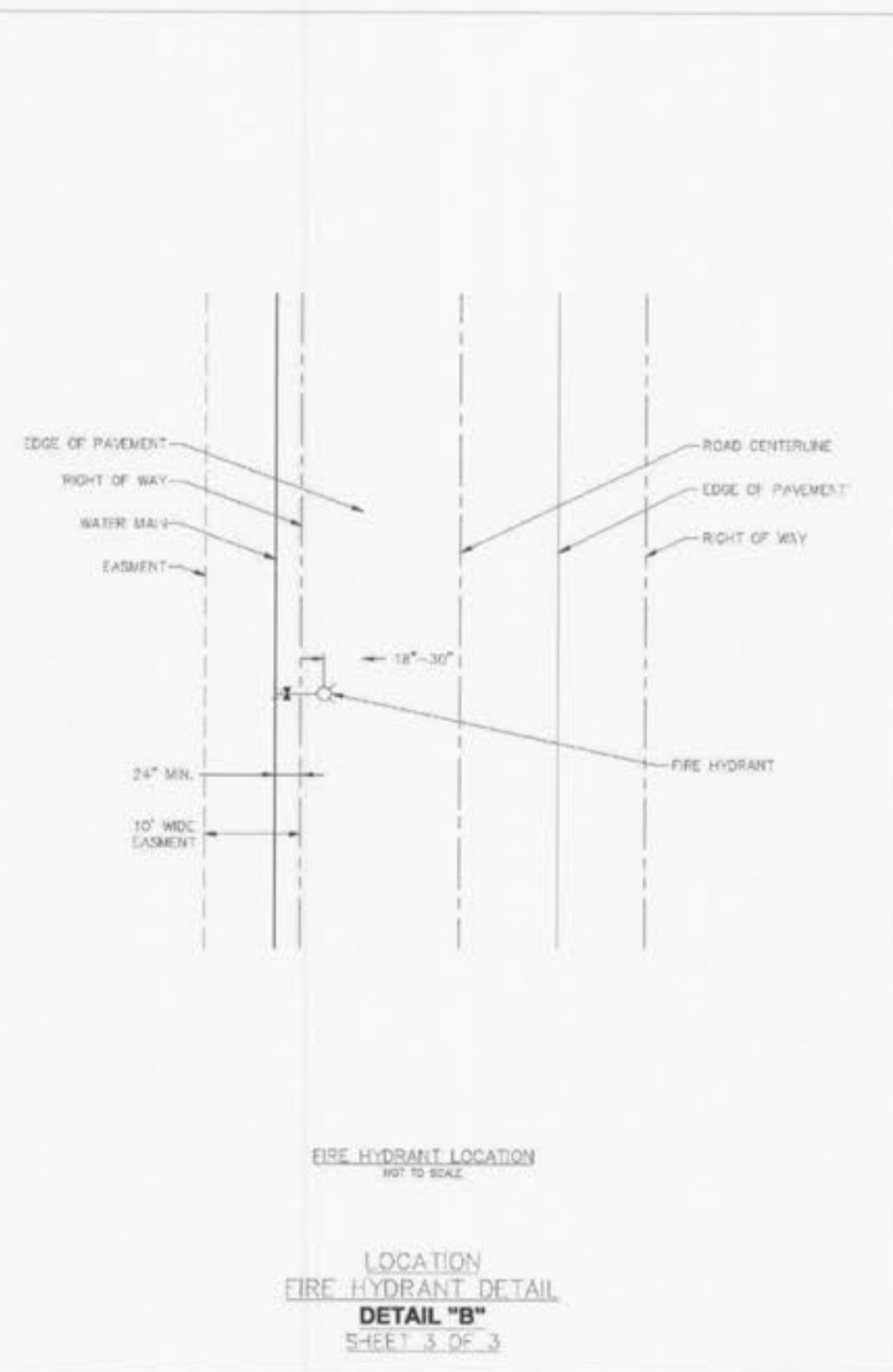
CIVIL ENGINEERS
 CORPORATE
 CERTIFICATE
 #01185

JAMES T. BOYD
 CIVIL ENGINEER
 PE No. E-200010008
 DATE: 12/21/10

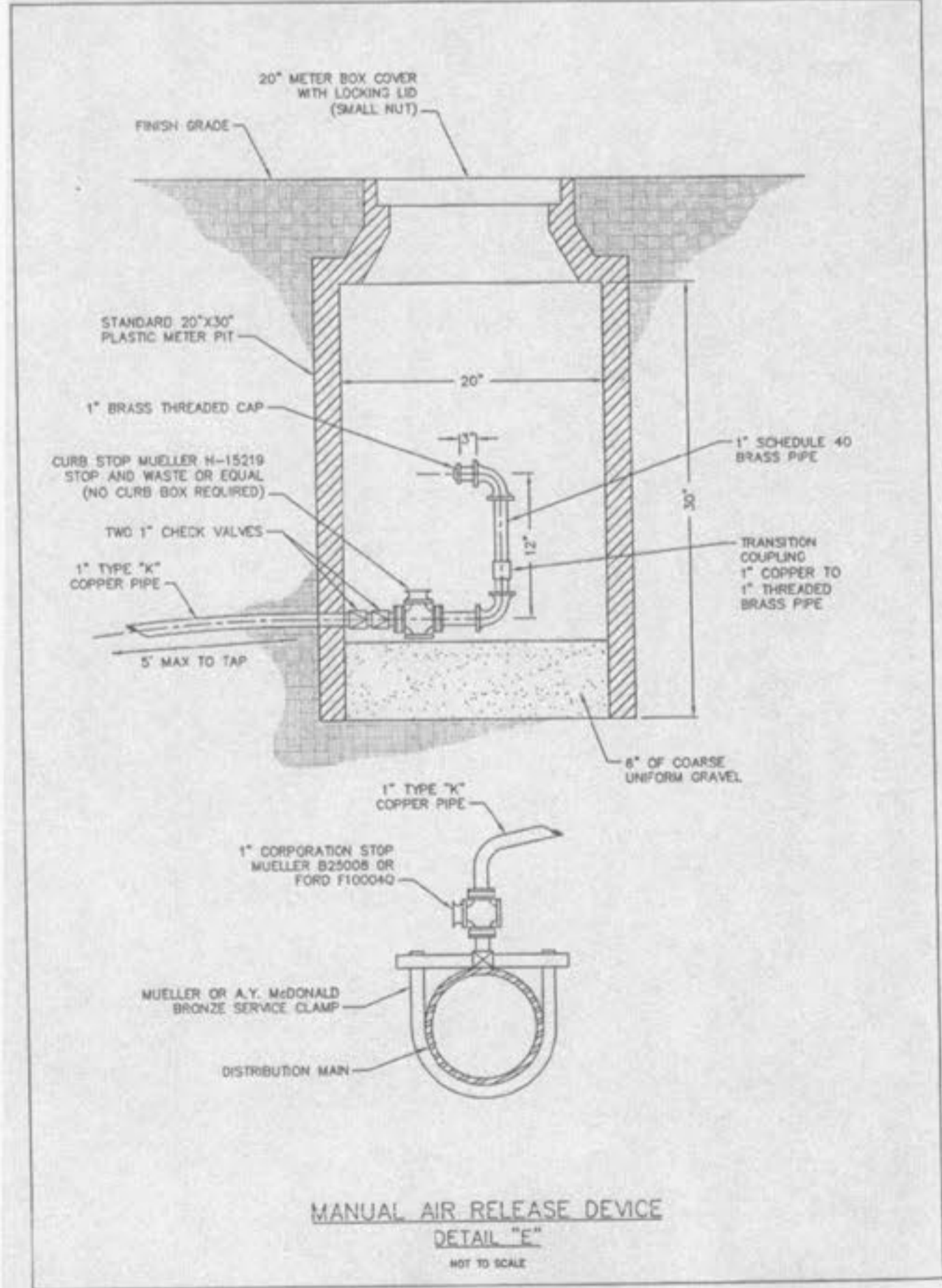
PRESTON WOODS - PHASE 5
 IMPROVEMENT PLANS
 PRESTON WOODS LANE
 O FALLON, MO. 63366
WATER DETAILS

planning • engineering • surveying • landscape architecture
Gole and ASSOCIATES INCORPORATED
 1243 tom ginneriver avenue
 10777 sunset office drive
 p. 636 978 7508 f. 636 978 7509
 p. 314 984 9887 f. 314 984 6587

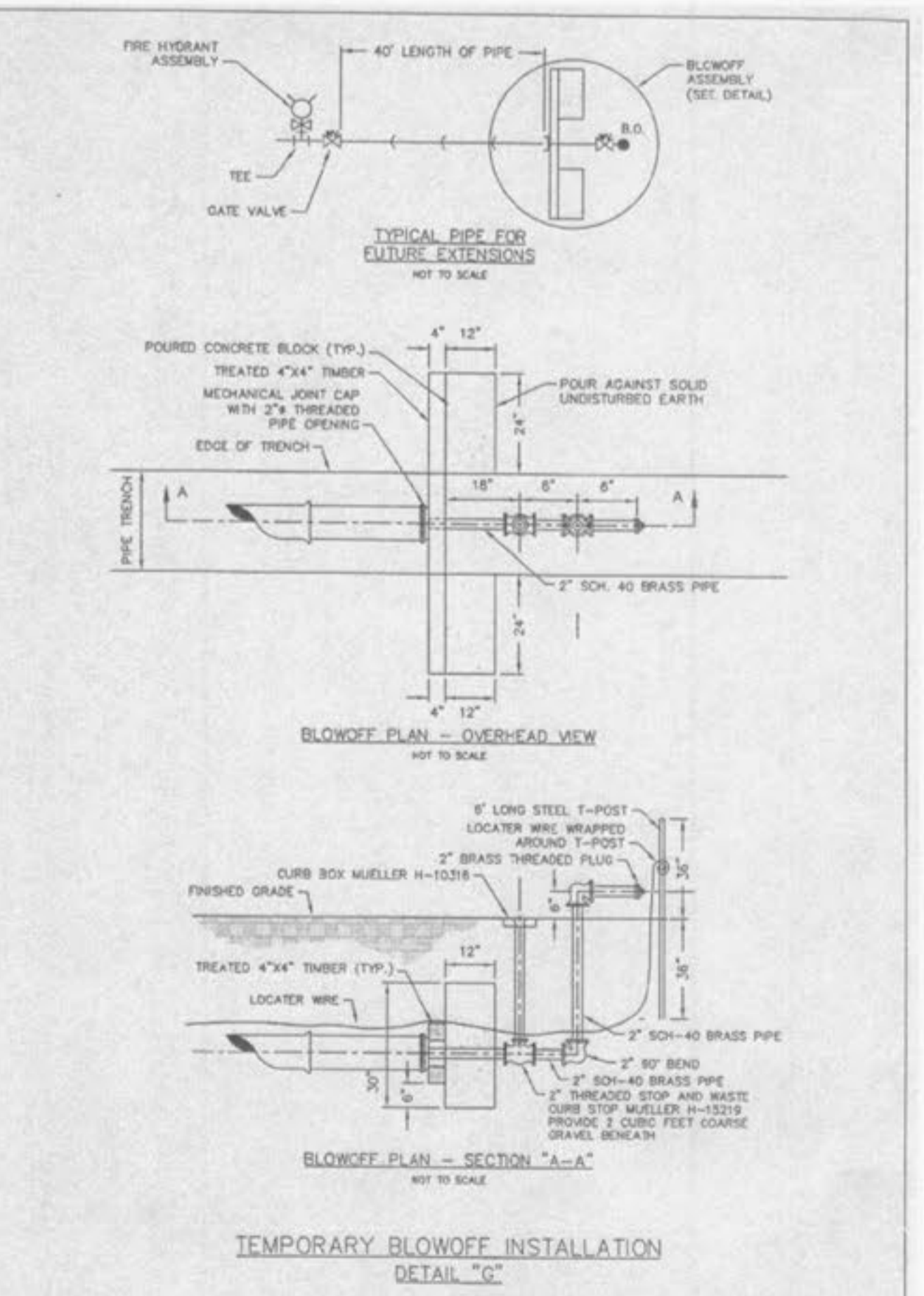
DESIGN/CALC BY: JKW
 DRAWN BY: JKW
 CHECKED BY: JTR
 DRAWING SCALE:
 DATE: 11/03/10
 Job Number: 10-0038
 Sheet Number: C8.9



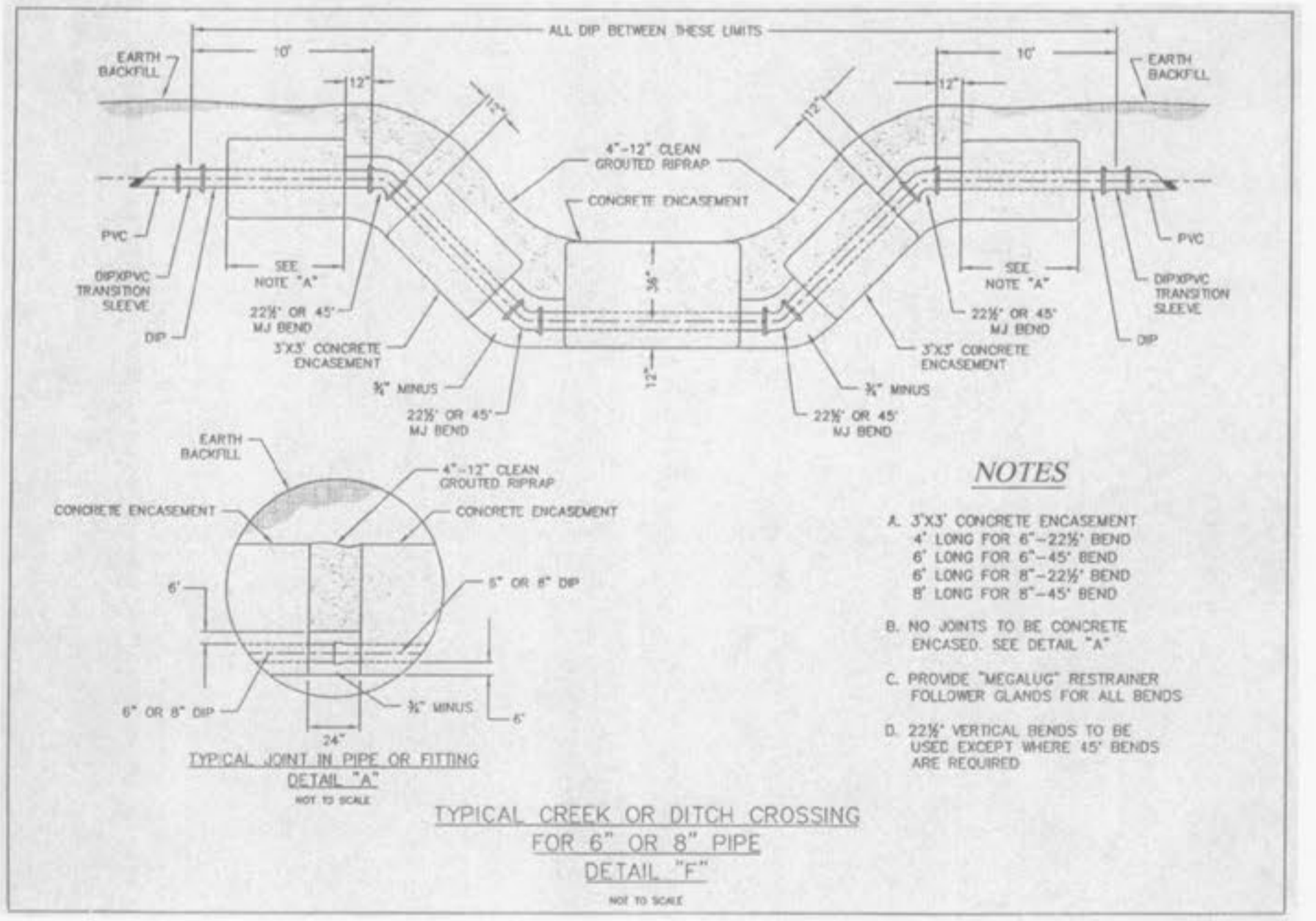
LOCATION FIRE HYDRANT DETAIL
DETAIL "B"
 SHEET 3 OF 3



MANUAL AIR RELEASE DEVICE
DETAIL "E"
 NOT TO SCALE



TEMPORARY BLOWOFF INSTALLATION
DETAIL "C"
 NOT TO SCALE



NOTES

- A. 3'x3' CONCRETE ENCASUREMENT
 4' LONG FOR 6"-22 1/2" BEND
 6' LONG FOR 6"-45" BEND
 8' LONG FOR 8"-22 1/2" BEND
 8' LONG FOR 8"-45" BEND
- B. NO JOINTS TO BE CONCRETE ENCASED. SEE DETAIL "A"
- C. PROVIDE "MEGALUG" RESTRAINER FOLLOWER GLANDS FOR ALL BENDS
- D. 22 1/2" VERTICAL BENDS TO BE USED EXCEPT WHERE 45° BENDS ARE REQUIRED

TYPICAL CREEK OR DITCH CROSSING
FOR 6" OR 8" PIPE
DETAIL "F"
 NOT TO SCALE

USER: James Wilson T&E, SITE 10
 DATE: 11/03/10 10:54 AM
 DRAWING: E:\WORK\2010\10-0038\CAD-ENG\C-04\PLAN_DETAIL_10-0038.dwg