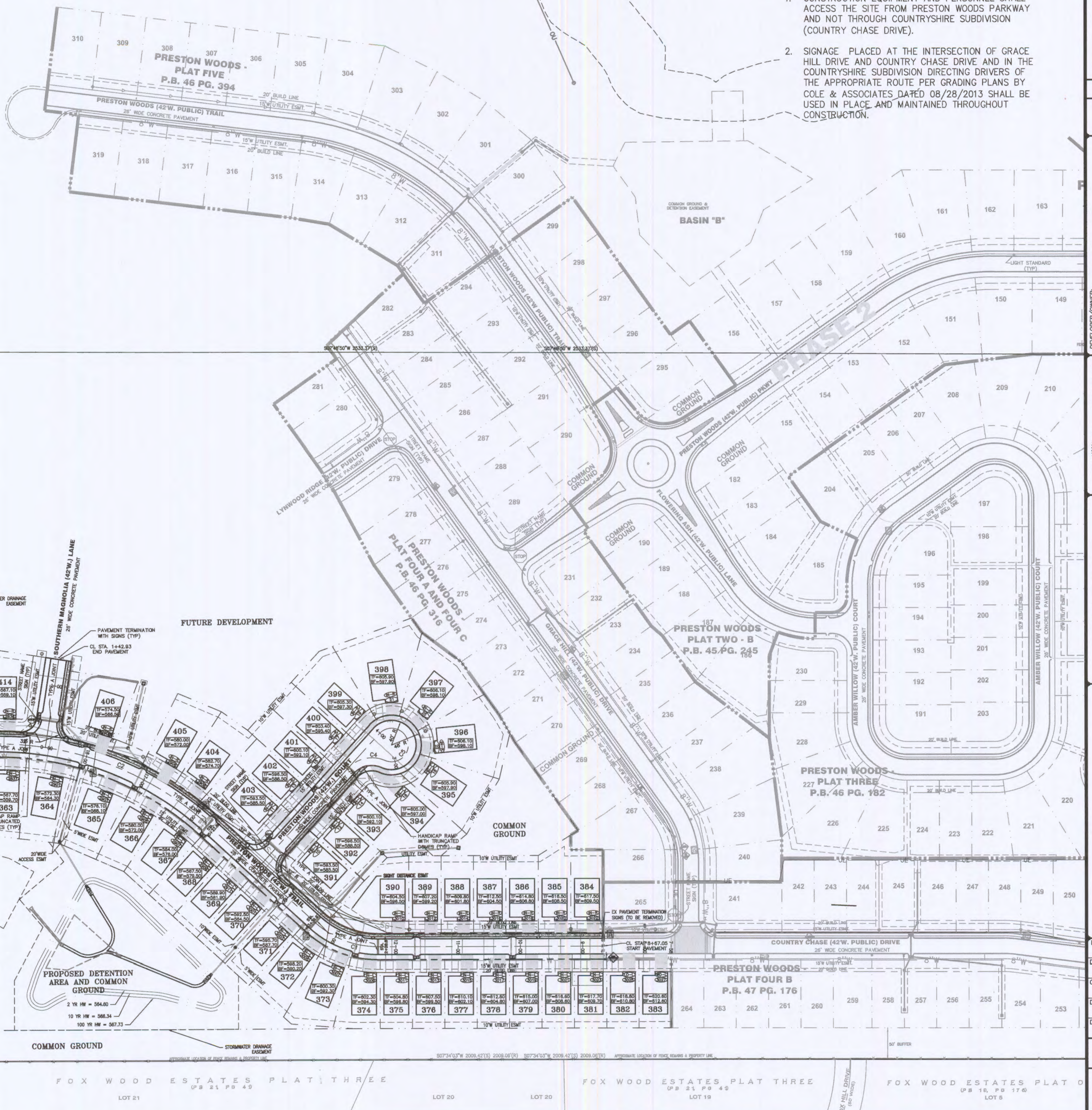


1 TYP. LOT DETAIL
SCALE: N.T.S. REF. DWG.

- NOTE:
- CONSTRUCTION EQUIPMENT AND PERSONNEL SHALL ACCESS THE SITE FROM PRESTON WOODS PARKWAY AND NOT THROUGH COUNTRYSHIRE SUBDIVISION (COUNTRY CHASE DRIVE).
 - SIGNAGE PLACED AT THE INTERSECTION OF GRACE HILL DRIVE AND COUNTRY CHASE DRIVE AND IN THE COUNTRYSHIRE SUBDIVISION DIRECTING DRIVERS OF THE APPROPRIATE ROUTE PER GRADING PLANS BY COLE & ASSOCIATES DATED 08/28/2013 SHALL BE USED IN PLACE AND MAINTAINED THROUGHOUT CONSTRUCTION.



N/E CATHERINE ELZE REVOCABLE TRUST PARCEL ID 4-0048-2011-00-4
 N/W DORIS O. SCHERIDALM (28' HWY. PG. 630) PARCEL ID 4-0048-2011-00-5
 S/W SOUTHWEST CORNER OF US BLVD. AND S. 111 PARCEL ID 4-0048-2011-00-3

DEVELOPER/OWNER
PULTE GROUP
 16640 CHESTERFIELD GROVE, SITE 200
 CHESTERFIELD, MO 63005
 PHONE: (636) 537-7129

CIVIL ENGINEERS
 CORPORATE
 ENGINEERING
 CERTIFICATE
 NUMBER
 141168
 JOHN F. HARSHBARGER
 REGISTERED PROFESSIONAL ENGINEER
 MISSOURI
 DATE: 11/24/13

PRESTON WOODS PHASE 6 IMPROVEMENT PLANS
 PRESTON WOODS LANE
 FALLOON, MO 63066
OVERALL SITE PLAN

+ ST CHARLES
 1530 S. Fifth Street
 Suite 307
 St. Charles, MO 63033
 636.978.7908 ext

cole
 CIVIL ENGINEERING / SURVEYING / PLANNING / LANDSCAPE ARCHITECTURE
 Cole & Associates, Inc.

DESIGN/CALC BY
 MTS

DRAWN BY
 MTS

CHECKED BY
 JFH

DRAWING SCALE

DATE
 09/04/2013

Job Number
13-0054

Sheet Number
C3.0