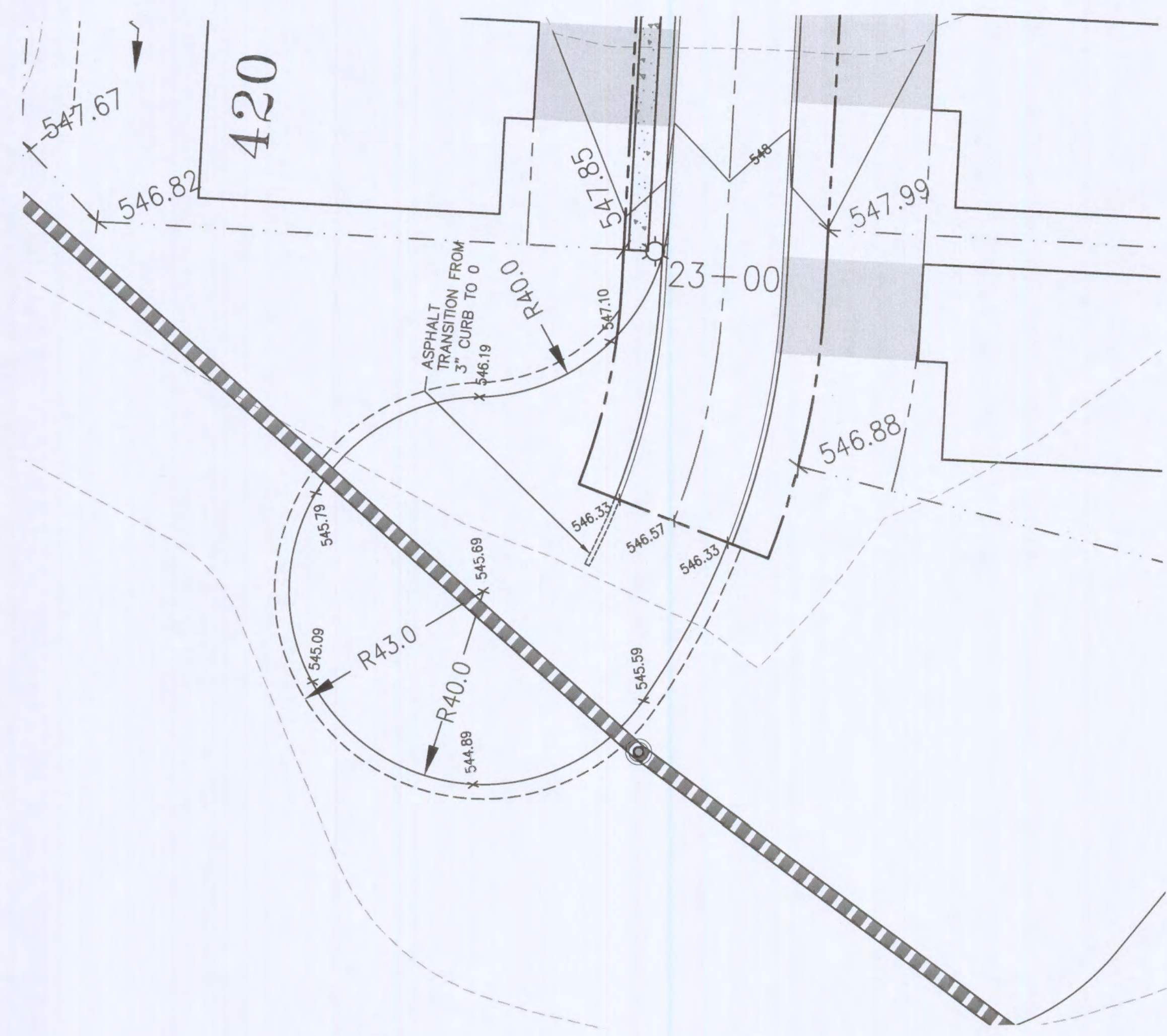


- GENERAL NOTES**
- Do not scale drawing. Follow dimensions.
  - For longitudinal and transverse joints, dowels and tie bar requirements and curb dimensions not shown refer to the Pavement Construction Details for Joints and Curbs, Std. Dep. C502.03.
  - All necessary pavement markings shall be as required by Saint Charles County.
  - For roadway cross slopes, pavement types and thickness refer to Standard Typical Sections.
  - Permits will not be issued for building construction on lots abutting a temporary turnaround unless and until the turnaround is actually constructed and has been approved by the Department.
  - The removal of the temporary turnaround surface, the restoration of the disturbed ground, and the extension of any sidewalk shall be the responsibility of the party(ies) that will be extending the street.
  - The asphalt surface shall be compacted to 98% maximum density.

SAINT CHARLES COUNTY  
HIGHWAY DEPARTMENT  
ST. CHARLES, MISSOURI  
PAVEMENT CONSTRUCTION DETAILS  
**RESIDENTIAL  
TEMPORARY TURNAROUND**  
DATE: June, 2002 DRAWING  
C502.06

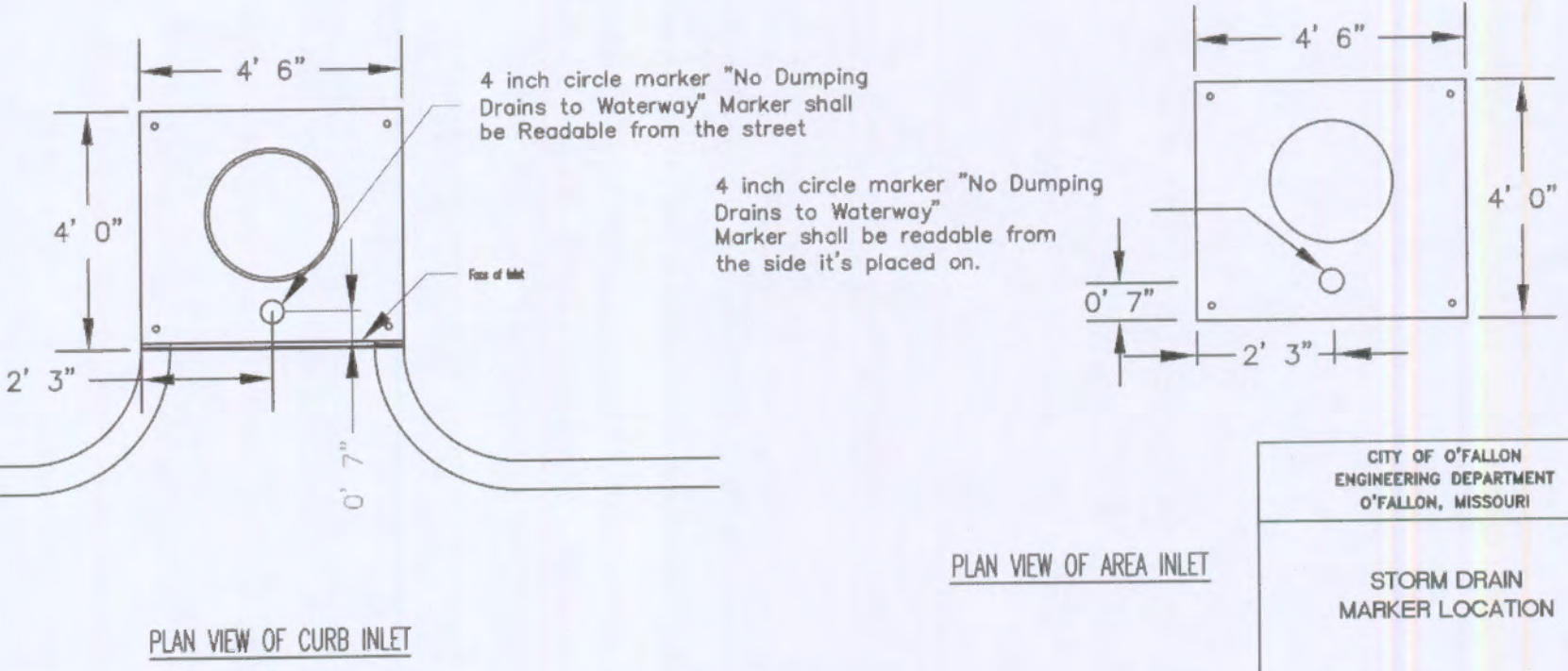
**8 TEMPORARY TURNAROUND DETAIL**  
SCALE: NTS REF. DWG.



**2 TEMPORARY TURNAROUND**  
SCALE: 1"=20' REF. DWG.

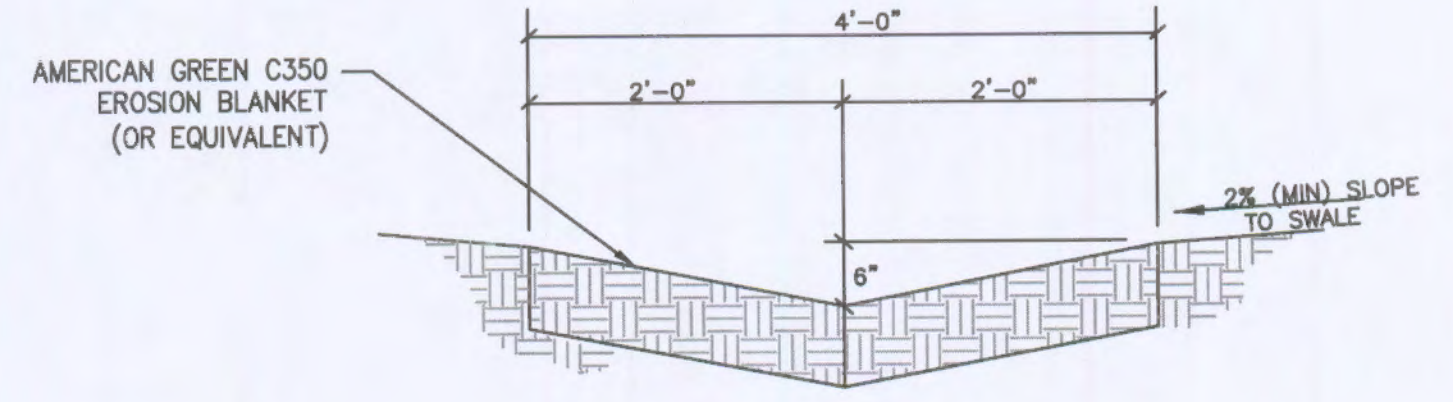
\* The City of O'Fallon must be provided with a symbol/medallion for review and approval prior to installation. Contact the City if any information is needed.

Size	Style	Adhesive	Message (Part #)
3 7/8" TO 4"	Crystal Cap or Standard Style	Epoxy	No Dumping Drains to Waterway

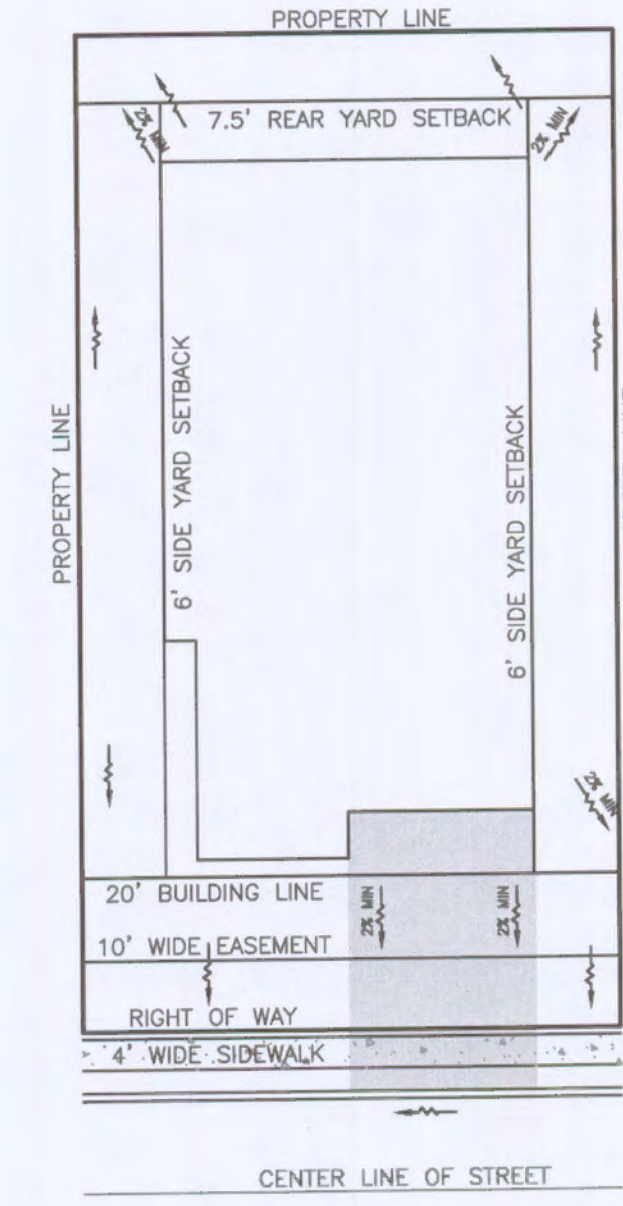


CITY OF O'FALLON  
ENGINEERING DEPARTMENT  
O'FALLON, MISSOURI  
**STORM DRAIN  
MARKER LOCATION**

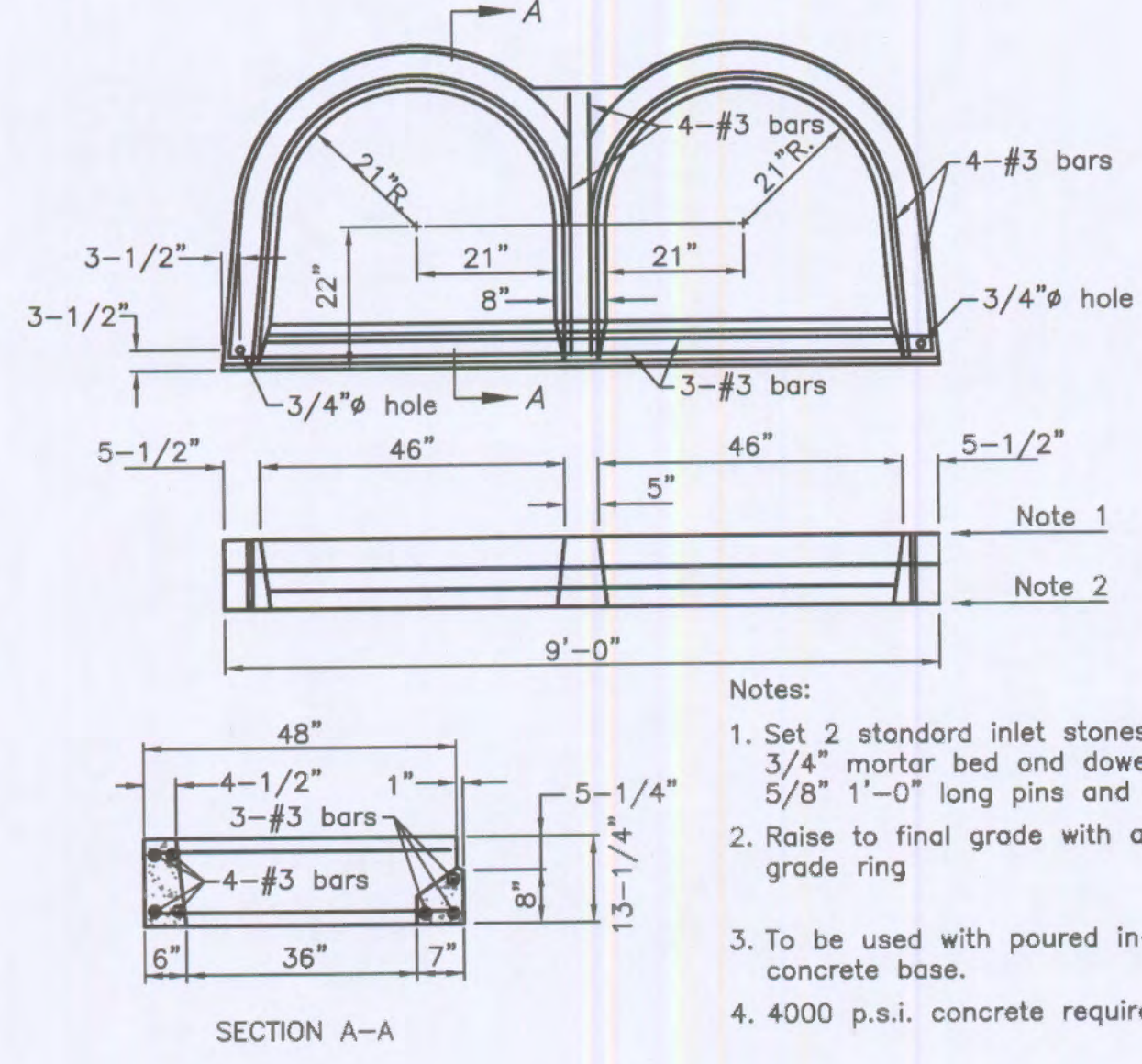
**7 STORM DRAIN MARKER LOCATION**  
SCALE: NTS REF. DWG.



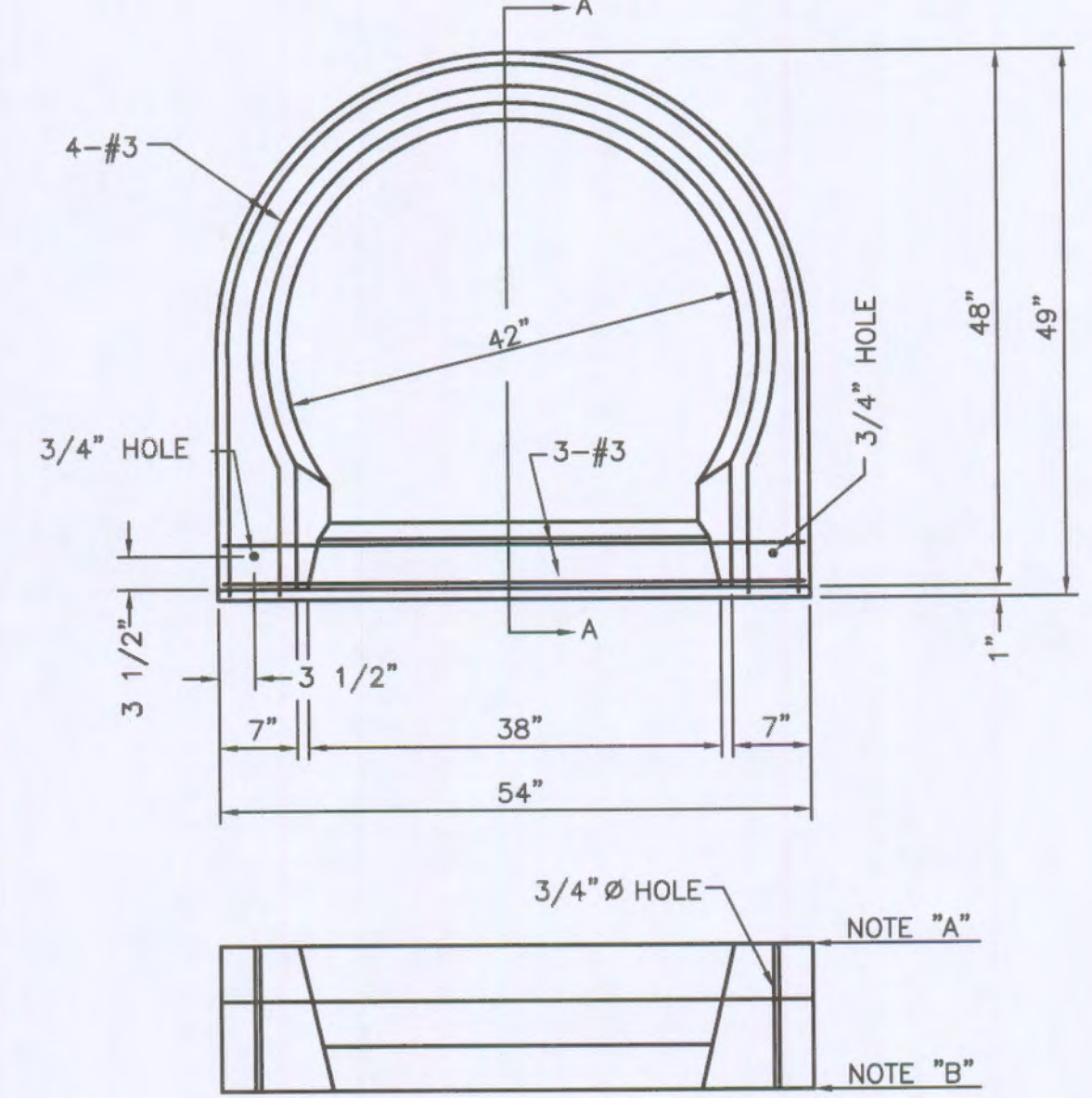
**6 VEGETATIVE SWALE DETAIL**  
SCALE: NTS REF. DWG.



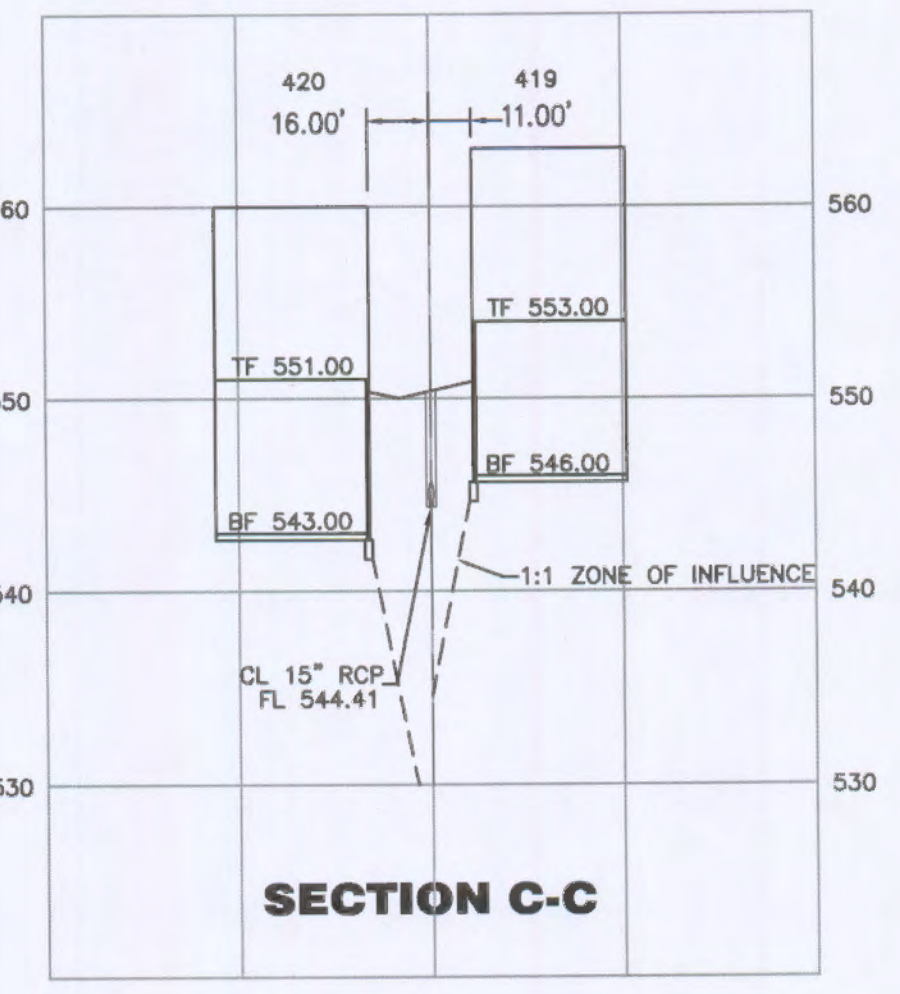
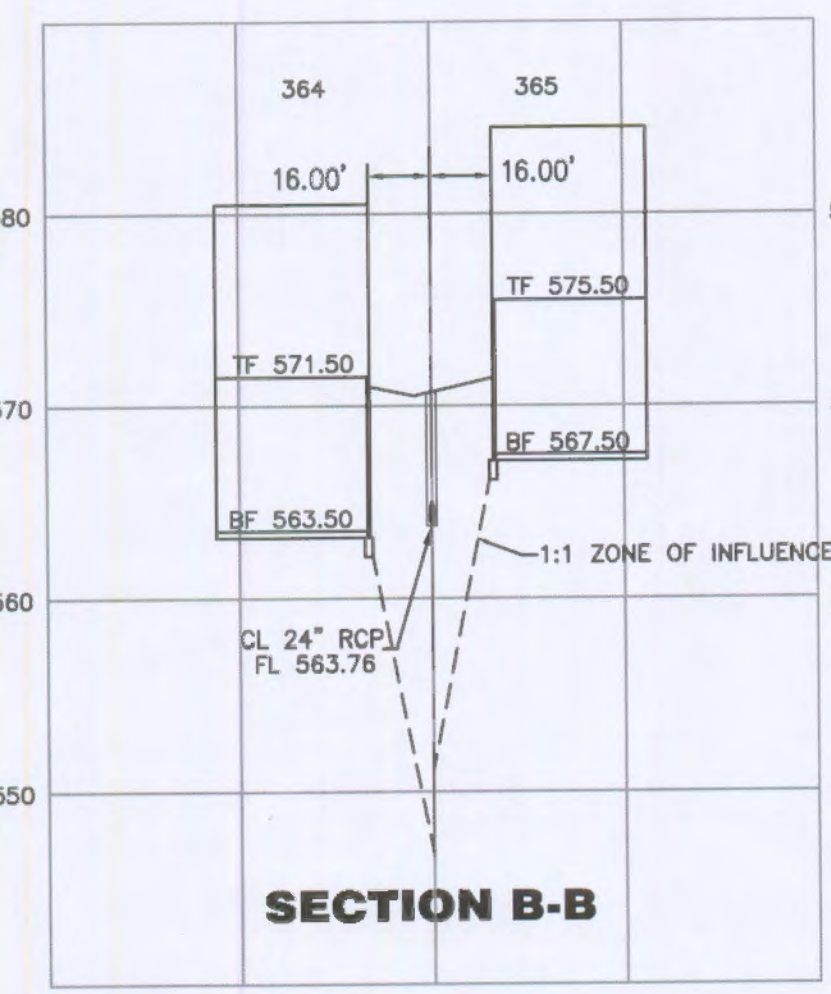
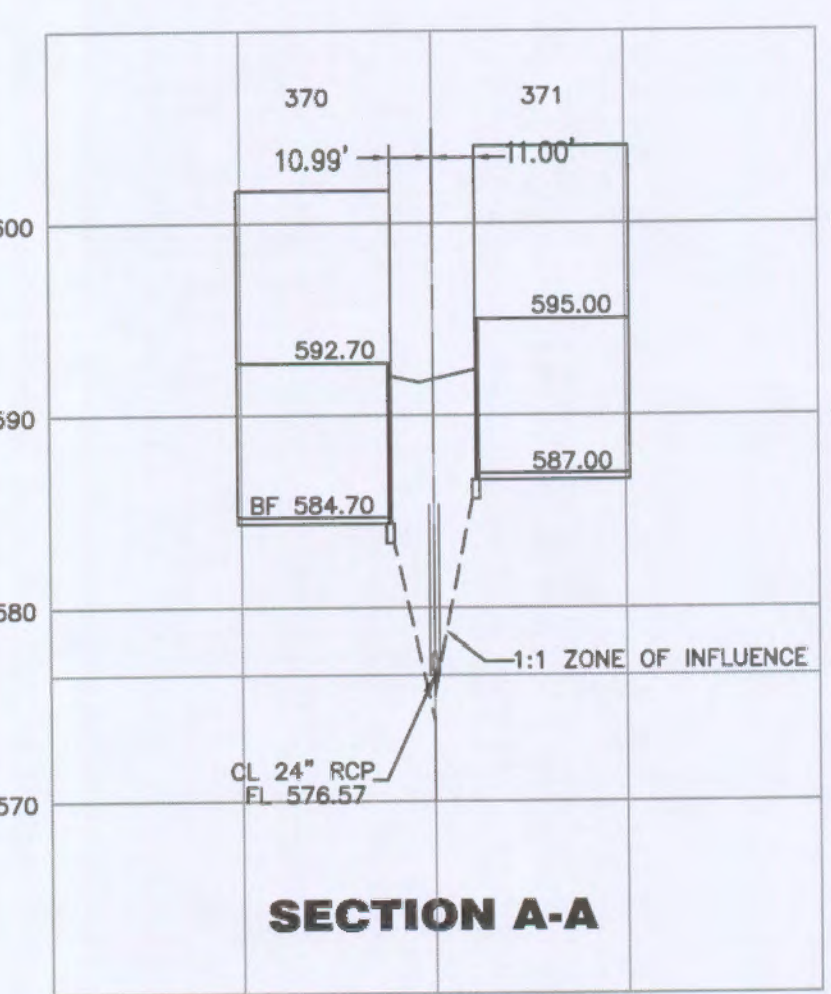
**5 TYP. LOT FLOW PATTERN DETAIL**  
SCALE: NTS REF. DWG.



**4 DOUBLE CURB INLET**  
SCALE: NTS REF. DWG.



**3 SINGLE CURB INLET**  
SCALE: NTS REF. DWG.



**1 UTILITY CROSS SECTIONS**  
SCALE: HORZ. 1"=50' VERT. 1"=10' REF. DWG.

NOTE: ALL STORM SEWER STRUCTURES SHALL HAVE POSITIVE FLOW THROUGH THE STRUCTURE.

USER: T:\er\stuart\166\DETAILS 2 11.M  
DRAWING: S:\WORK\166\2013\13-0054\C8D-TWCL\_C-001\VP\_Plan\01\_Plan\_Details.dwg

NO.	REVISION DESCRIPTION	DATE
2	CHANGE LOT NUMBERS	11/25/2013
	CUTTING AND PUNCH DOCUMENTS	10/19/2013

DEVELOPER/OWNER:  
**PULTE GROUP**  
16640 CHESTERFIELD GROVE, STE 200  
CHESTERFIELD, MO 63005  
PHONE: (636) 537-7129

THE PROFESSIONAL ENGINEER'S SEAL, ADDRESS, EXPIRE DATE, AND DISCIPLINE (PURSUANT TO SECTION 327.411, RSMO) ARE THE RESPONSIBILITY OF THE REGISTERED PROFESSIONAL ENGINEER. THIS SEAL IS TO BE USED ONLY FOR THE PROJECT TO WHICH IT IS APPLIED. IT IS NOT TO BE USED FOR ANY PART OR PARTS OF THE PROJECT TO WHICH THIS SEAL REFERS.

CIVIL ENGINEERS  
CORPORATE  
ENGINEERING  
OFFICE  
4001 AS  
JOHN F. HARBINGER  
REGISTERED PROFESSIONAL ENGINEER  
PE NO. E-29716  
PE EXPIRE DATE: 11/24/13

**PRESTON WOODS  
PHASE 6  
IMPROVEMENT PLANS**  
PRESTON WOODS, LANE  
O'FALLON, MO 63066

**SITE DETAILS**

+ ST. CHARLES  
1530 E. Fifth Street  
Suite 307  
St. Charles, MO 63033  
636.978.2508 fax

**cole**  
CIVIL ENGINEERING / SURVEYING / PLANNING / LANDSCAPE ARCHITECTURE  
Cole & Associates, Inc.

DESIGN/CALC BY: MTS  
DRAWN BY: MTS  
CHECKED BY: JFH  
DRAWING SCALE: -  
DATE: 09/04/2013  
Job Number: 13-0054  
Sheet Number: C8.2