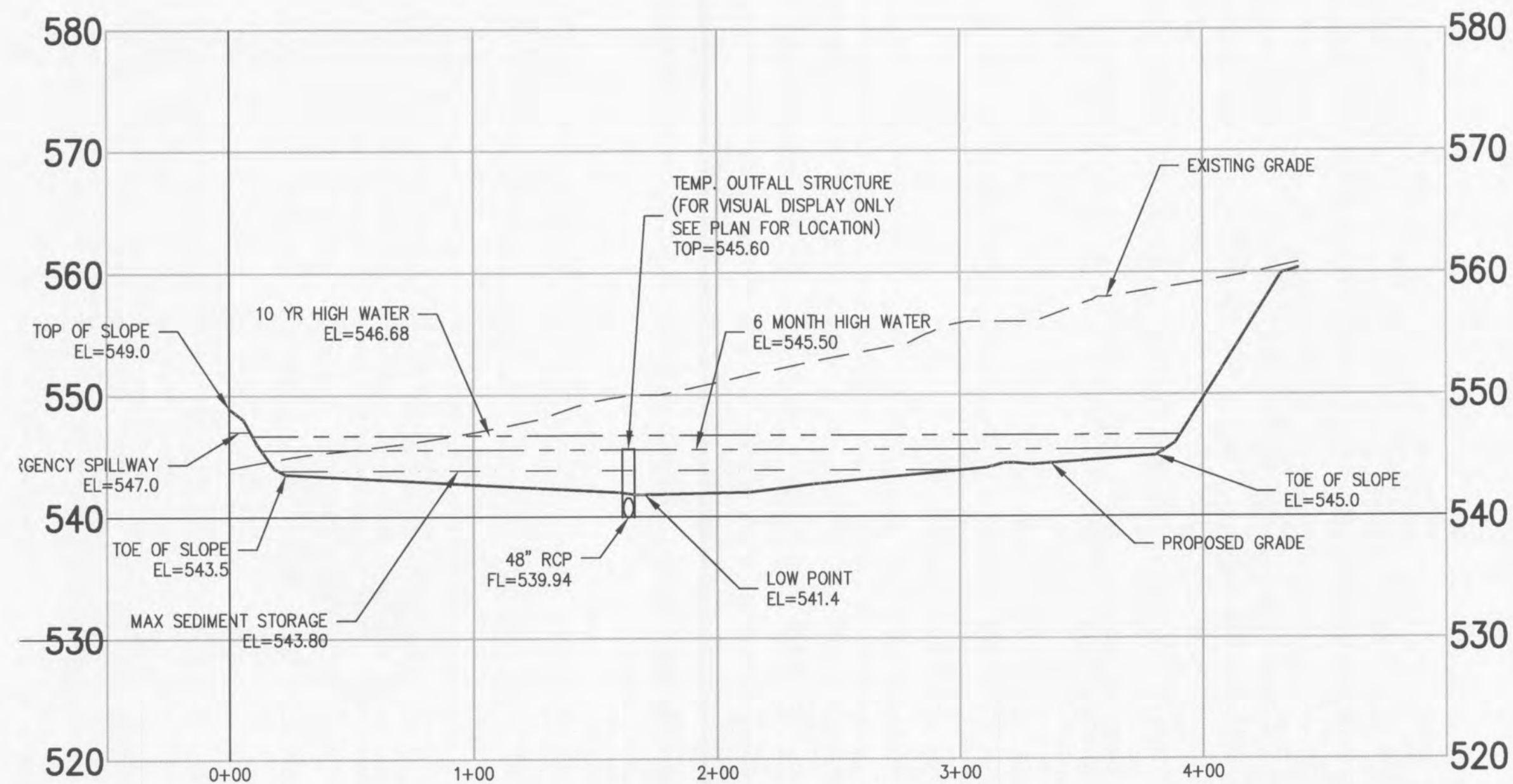
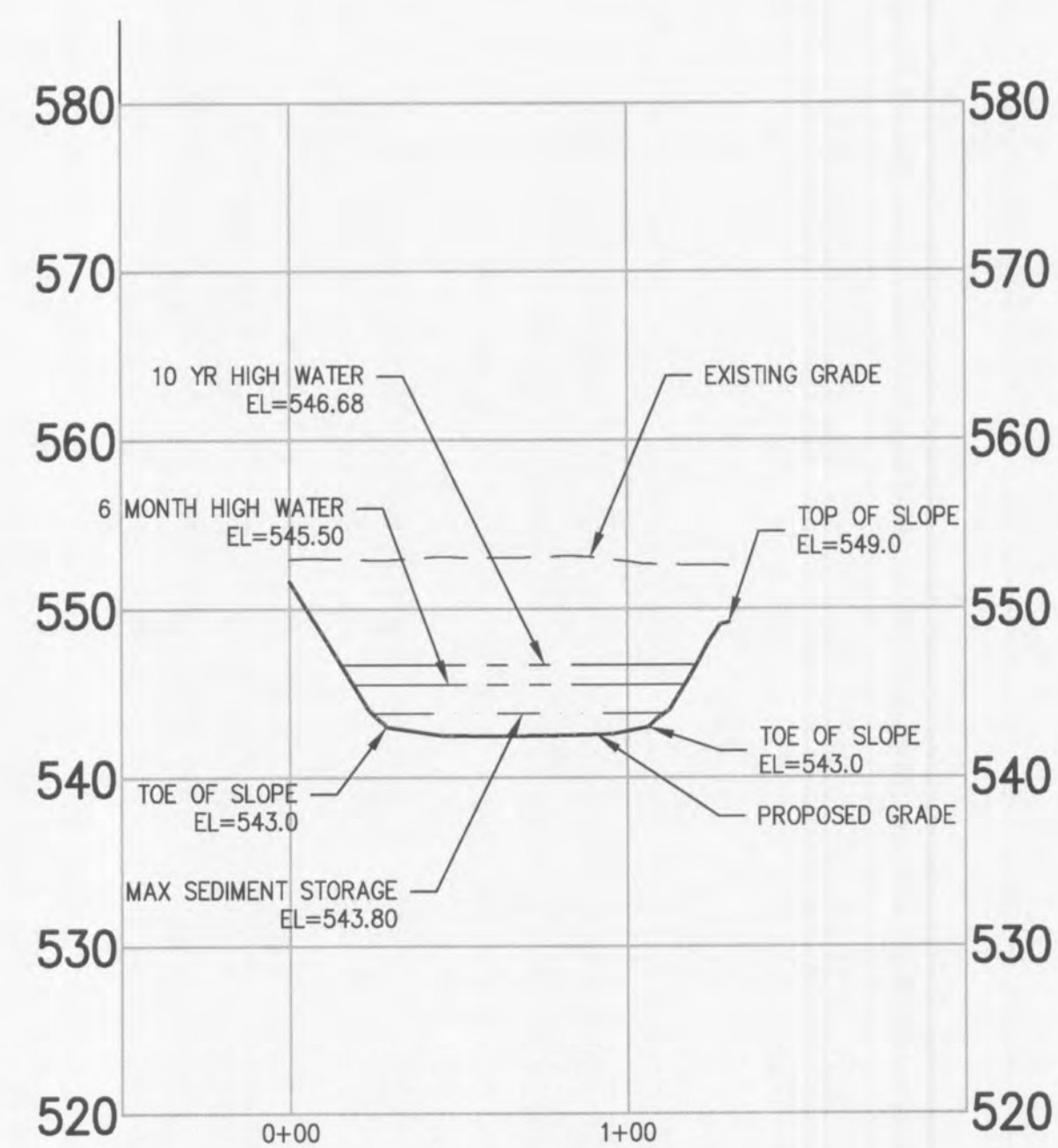


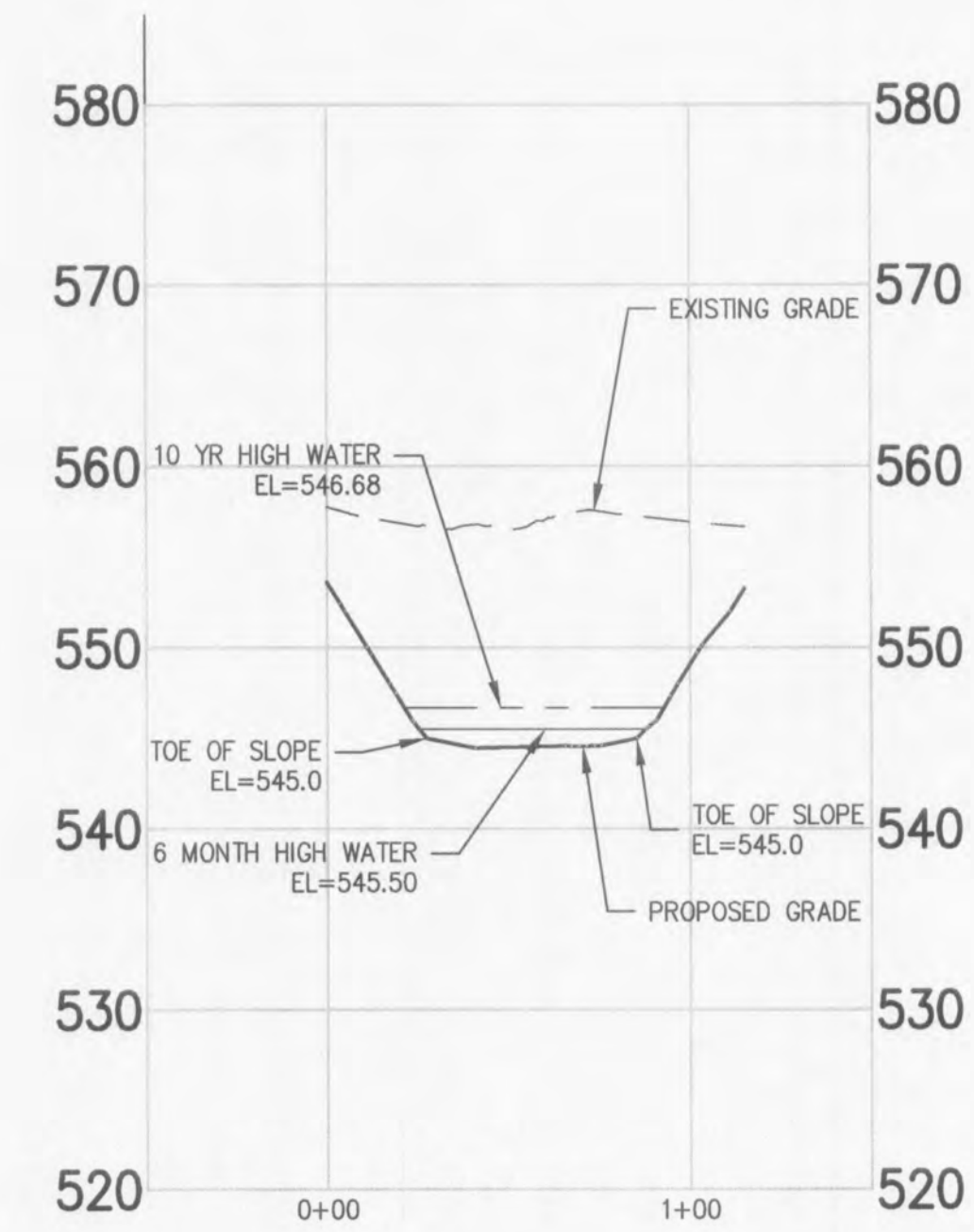
**6 EMERGENCY SPILLWAY DETAIL**  
SCALE: REF. DWG.



**5 SEDIMATE BASIN B D-D**  
SCALE: REF. DWG.

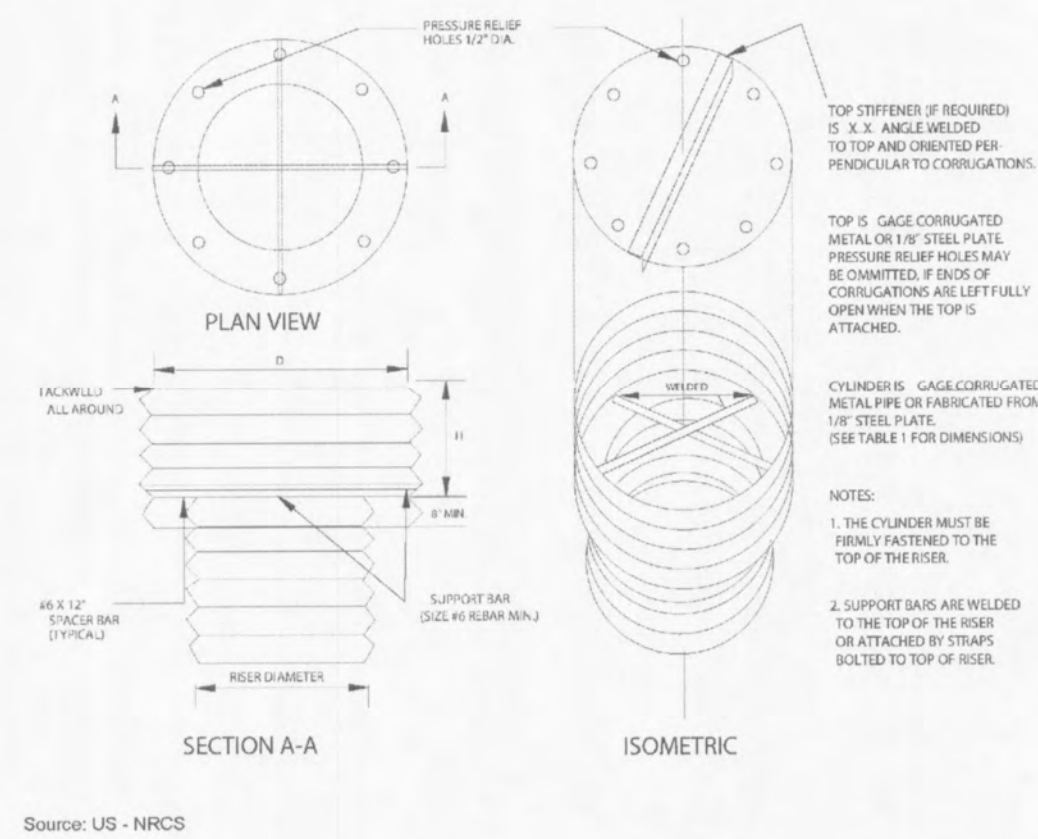


**4 SEDIMATE BASIN B E-E**  
SCALE: REF. DWG.



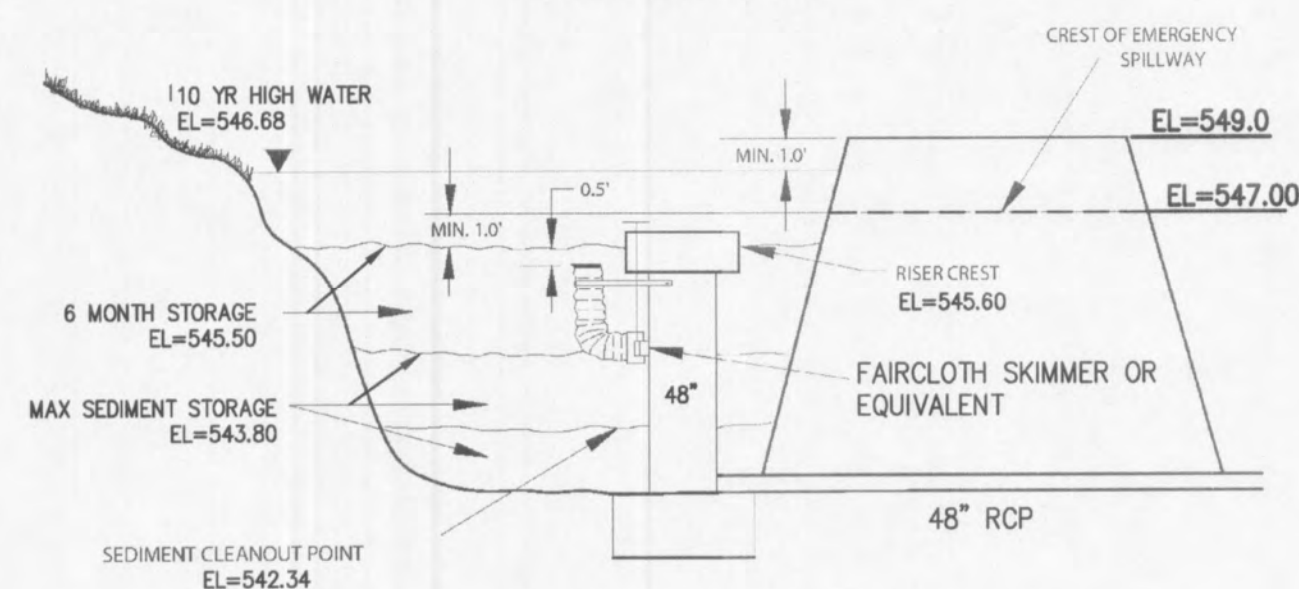
**3 SEDIMATE BASIN B F-F**  
SCALE: REF. DWG.

Anti - Vortex Device Design



**2 ANTI VORTEX DETAIL**  
SCALE: REF. DWG.

Sediment Basin Schematic Elevations



Design Elevations With Emergency Spillway

**1 SEDIMENT BASIN B DETAIL AND PROFILE**  
SCALE: REF. DWG.

USER: Taylor Stuart 10:52 AM 8/25/2013  
DRAWING: S:\VORTEX\2013\13-0054\CAD-DWG\C-001\MASS GRADING\C-001.DWG

NO.	DATE	REVISION DESCRIPTION
1	8/25/2013	CITY COMMENTS
2	8/25/2013	CITY COMMENTS

DEVELOPER/OWNER: **PULTE GROUP**  
16640 CHESTERFIELD GROVE, SITE 200  
CHESTERFIELD, MO 63005  
PHONE: (636) 537-7129

THE PROFESSIONAL WHOSE SIGNATURE AND PERSONAL SEAL APPEAR HEREON ASSUMES RESPONSIBILITY ONLY FOR WHAT APPEARS ON THIS PAGE, AND DISCLAIMS SPECIFICATIONS, ESTIMATES, RECORDS, OR OTHER DOCUMENTS OR INSTRUMENTS NOT SEALED BY THE UNDERSIGNED PROFESSIONAL RELATING TO, OR INTENDED TO BE USED FOR ANY PART OR PARTS OF THE PROJECT TO WHICH THIS PAGE REFERS.

CIVIL ENGINEERS  
CORPORATE  
LICENSED  
CERTIFICATE  
#001165

STATE OF MISSOURI  
REGISTERED PROFESSIONAL ENGINEER  
JAN F. HANSHARBER  
E-29716  
PE NO. 29716

DATE: 8/25/13

PRESTON WOODS  
PHASE 6  
MASS GRADING PLANS  
PRESTON WOODS, LANE  
O'FALLON, MO 63366

SWPP PROFILES & DETAILS

**cole**  
CIVIL ENGINEERING / SURVEYING / PLANNING / LANDSCAPE ARCHITECTURE  
Cole & Associates, Inc.

+ ST. CHARLES  
1520 S. Fifth Street  
Suite 307  
St. Charles, MO 63303  
636.978.7508 ext

DESIGN/CALC BY	JFH
DRAWN BY	MTS
CHECKED BY	JFH
DRAWING SCALE	-
DATE	7/25/2013
Job Number	13-0054
Sheet Number	G4.5