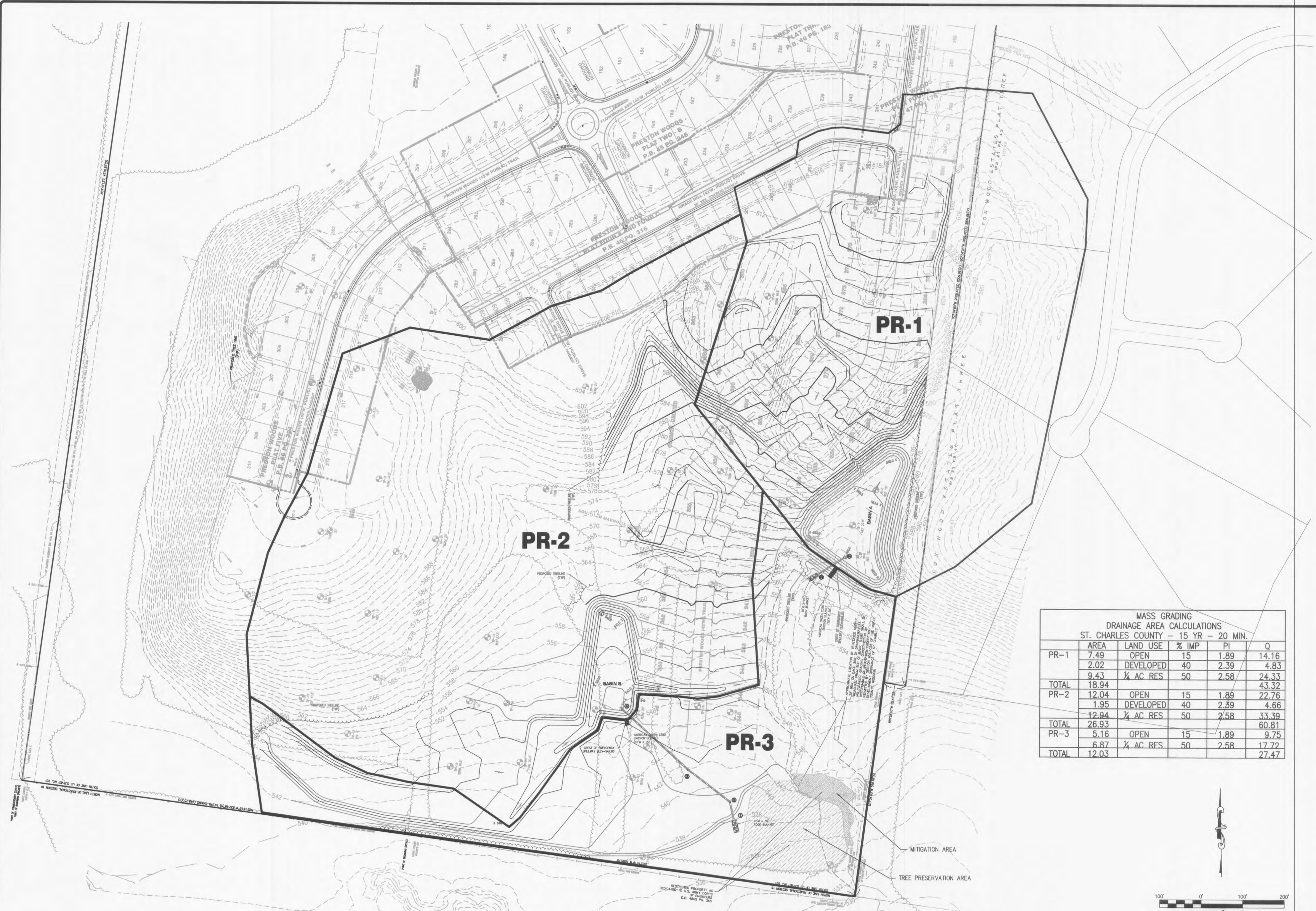


USER: Taylor, Stuart; TAB: POST DAM
 DATE: September 3, 2013 - 11:54:27 AM
 DRAWING: S:\JOBS\Job2013\13-0054\CSD-DWG_C-04-MASS_GROUNDING_DWG_DAM.dwg



**MASS GRADING
 DRAINAGE AREA CALCULATIONS
 ST. CHARLES COUNTY - 15 YR - 20 MIN.**

	AREA	LAND USE	% IMP	PI	Q
PR-1	7.49	OPEN	15	1.89	14.16
	2.02	DEVELOPED	40	2.39	4.83
	9.43	1/4 AC RES	50	2.58	24.33
TOTAL	18.94				43.32
PR-2	12.04	OPEN	15	1.89	22.76
	1.95	DEVELOPED	40	2.39	4.66
	12.94	1/4 AC RES	50	2.58	33.39
TOTAL	26.93				60.81
PR-3	5.16	OPEN	15	1.89	9.75
	6.87	1/4 AC RES	50	2.58	17.72
	12.03				27.47

THIS SHEET FOR DRAINAGE CALCULATION PURPOSES ONLY AND NOT TO BE USED AS CONSTRUCTION PLANS

DEVELOPER/OWNER:
PULTE GROUP
16640 CHESTERFIELD GROVE, STE 200
CHESTERFIELD, MO 63305
PHONE: (636) 537-7129

THE PROFESSIONAL WHOSE SIGNATURE AND PERSONAL SEAL APPEAR HEREON ASSUMES RESPONSIBILITY ONLY FOR THE WAY IT APPEARS ON THIS PAGE AND DISCLAIMS LIABILITY TO ANY OTHER PART OF THE PROJECT. ANY RESPONSIBILITY FOR ALL OTHER PLANS, SPECIFICATIONS, OR CONDITIONS OF THE PROJECT SHALL REMAIN WITH THE CLIENT. THIS SEAL IS VALID FOR ANY PART OF THE PROJECT TO WHICH THIS PAGE REFERS.

CIVIL ENGINEERS
 CORPORATE
 CERTIFICATE
 #01185
JOHN F. HASZBARBER
 NUMBER
 E-29716
 REGISTERED PROFESSIONAL ENGINEER
 STATE OF MISSOURI

DATE: 8/29/2013
 8/15/2013
 1
 NO
 CITY COMMENTS
 CITY COMMENTS

PRESTON WOODS
PHASE 6
MASS GRADING PLANS
 PRESTON WOODS LANE
 O'FALLON, MO 63366

POST DAM

+ ST. CHARLES
 1520 S. Fifth Street
 Suite 307
 St. Charles, MO 63303
 636.978.7508 fax

cole
 CIVIL ENGINEERING / SURVEYING / PLANNING / LANDSCAPE ARCHITECTURE
 Cole & Associates, Inc.

DESIGN/CALC BY: JFH
 DRAWN BY: MTS
 CHECKED BY: JFH
 DRAWING SCALE: -
 DATE: 7/25/2013

Job Number
13-0054
 Sheet Number
G6.2