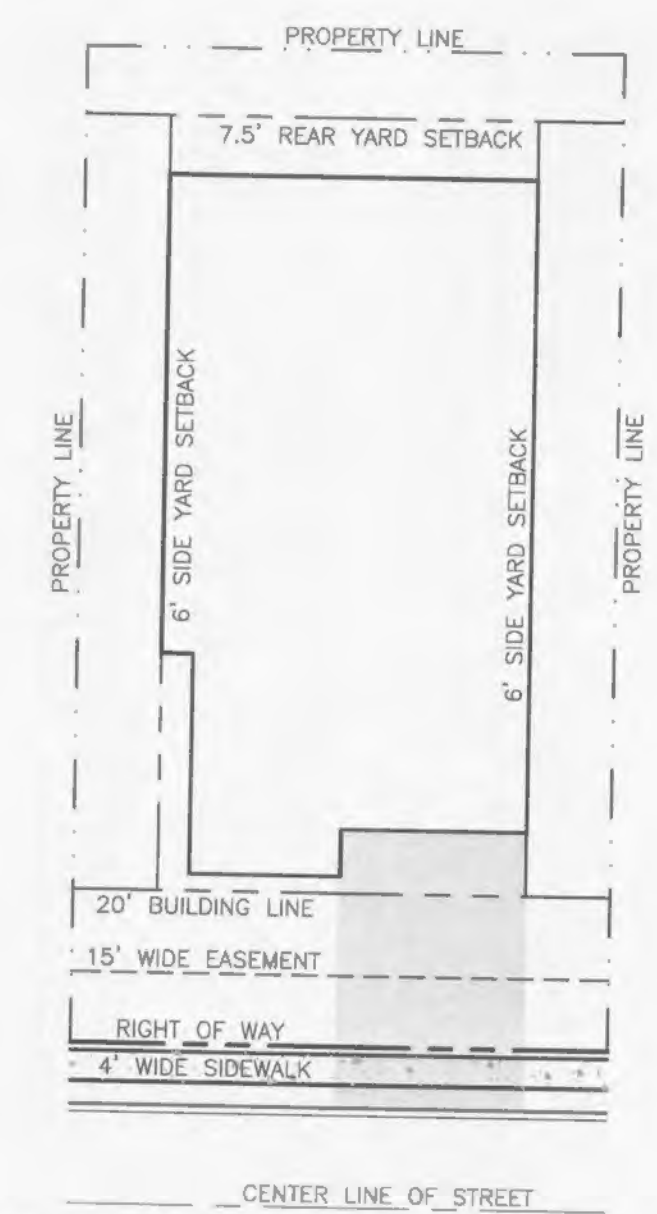
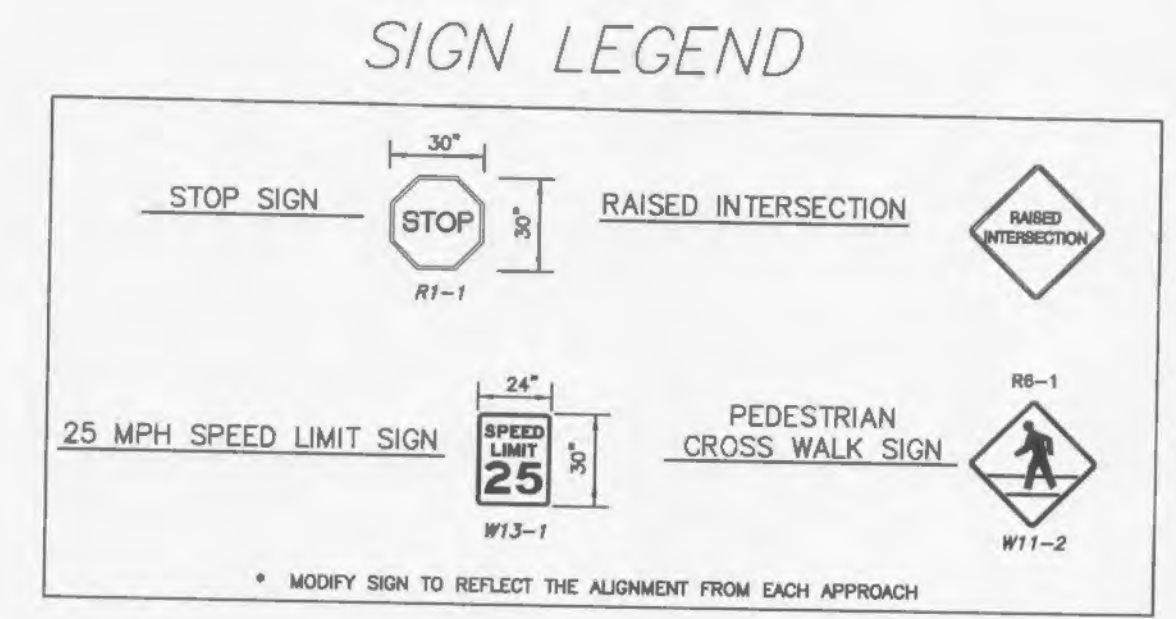
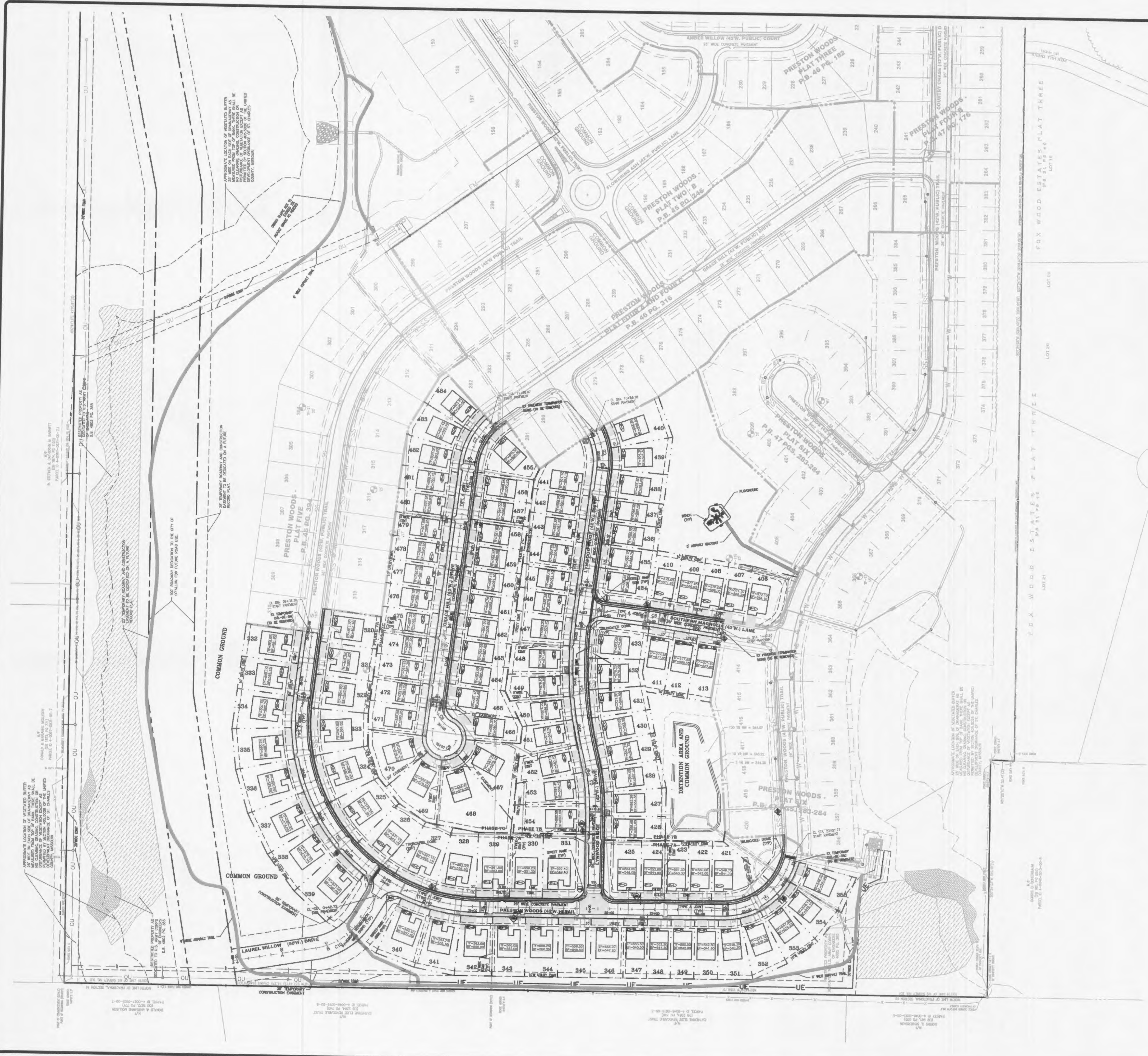
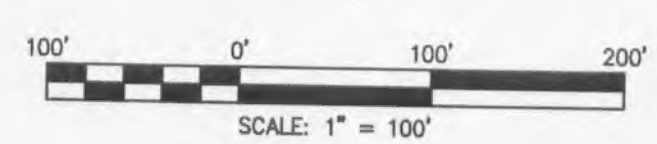


DATE: May 22, 2014
 DRAWING: S:\V\2013\13-0109\CD-DWG_C-04\13-0109-PHASE7-01-PH7-SITE.dwg



1 TYP. LOT DETAIL
 SCALE: N.T.S. REF. DWG.

- NOTE:
- CONSTRUCTION EQUIPMENT AND PERSONNEL SHALL ACCESS THE SITE FROM PRESTON WOODS PARKWAY AND NOT THROUGH COUNTRYSHIRE SUBDIVISION.
 - SIGNAGE PLACED AT THE INTERSECTION OF GRACE HILL DRIVE AND PRESTON WOODS PARKWAY DIRECTING DRIVERS OF THE APPROPRIATE ROUTE. SIGNS SHALL BE USED IN PLACE AND MAINTAINED THROUGHOUT CONSTRUCTION.
 - THE ORIGINAL SIGNAGE IN COUNTRYSHIRE DIRECTING TRAFFIC TO PRESTON WOODS SHALL REMAIN IN PLACE UNTIL ALL CONSTRUCTION ACTIVITIES ARE FINISHED.



PRESTON WOODS PHASE 7 IMPROVEMENT PLANS PRESTON WOODS LANE OTTALON, MO 63366		OVERALL SITE PLAN	
DEVELOPER/OWNER: FULTE GROUP 1707 CHESTERFIELD AIRPORT RD, SITE 120 CHESTERFIELD, MO 63005 PHONE: (636) 537-7129		CIVIL ENGINEERS: COLE JOHN F. HARSHBARGER NUMBER E-29716 REGISTERED PROFESSIONAL ENGINEER CIVIL ENGINEERING CERTIFICATE #001165 JOHN F. HARSHBARGER NUMBER E-29716 REGISTERED PROFESSIONAL ENGINEER CIVIL ENGINEERING CERTIFICATE #001165	
APPROXIMATE LOCATION OF MISTATED BUFFER... APPROXIMATE LOCATION OF MISTATED BUFFER... APPROXIMATE LOCATION OF MISTATED BUFFER...		CITY COMMENTS 5/27/14 5/27/14 3/26/14 DATE NO.	
+ ST. CHARLES 1330 S. Fifth Street Suite 307 St. Charles, MO 63303 636.578.7308 (tel)		DESIGN/CALC BY: MTS DRAWN BY: MTS CHECKED BY: JFH DRAWING SCALE: DATE: 01/07/2013 Job Number: 13-0109 Sheet Number: C3.0	
COLE CIVIL ENGINEERING / SURVEYING / PLANNING / LANDSCAPE ARCHITECTURE Cole & Associates, Inc.		CIVIL ENGINEERS: COLE JOHN F. HARSHBARGER NUMBER E-29716 REGISTERED PROFESSIONAL ENGINEER CIVIL ENGINEERING CERTIFICATE #001165	