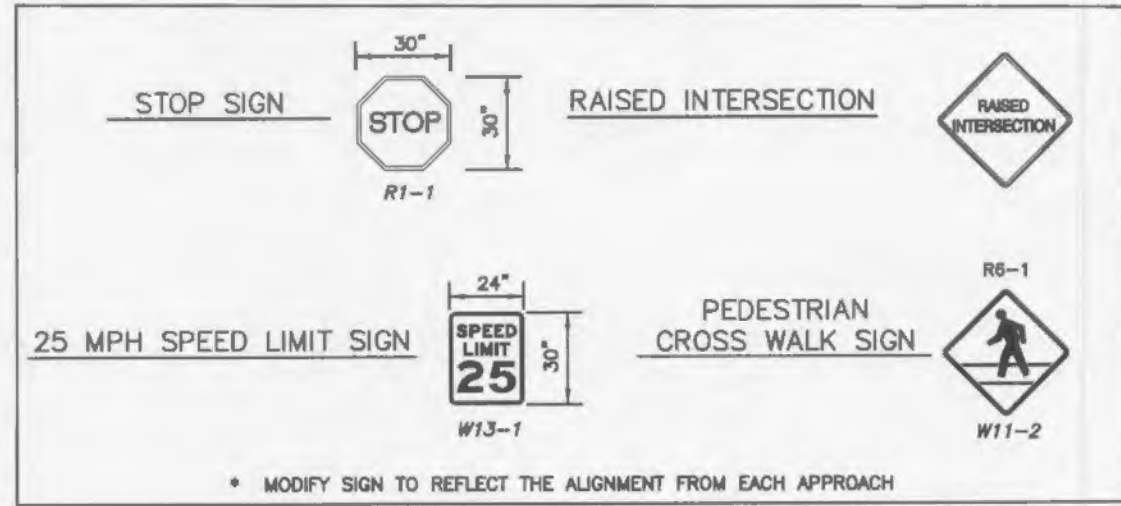
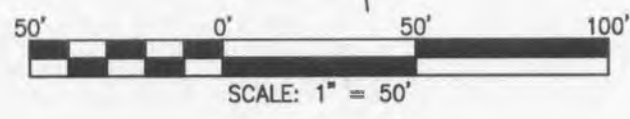


SIGN LEGEND



- NOTE:**
- CONSTRUCTION EQUIPMENT AND PERSONNEL SHALL ACCESS THE SITE FROM PRESTON WOODS PARKWAY AND NOT THROUGH COUNTRYSHIRE SUBDIVISION.
 - SIGNAGE PLACED AT THE INTERSECTION OF GRACE HILL DRIVE AND PRESTON WOODS PARKWAY DIRECTING DRIVERS OF THE APPROPRIATE ROUTE. SIGNS SHALL BE USED IN PLACE AND MAINTAINED THROUGHOUT CONSTRUCTION.
 - THE ORIGINAL SIGNAGE IN COUNTRYSHIRE DIRECTING TRAFFIC TO PRESTON WOODS SHALL REMAIN IN PLACE UNTIL ALL CONSTRUCTION ACTIVITIES ARE FINISHED.



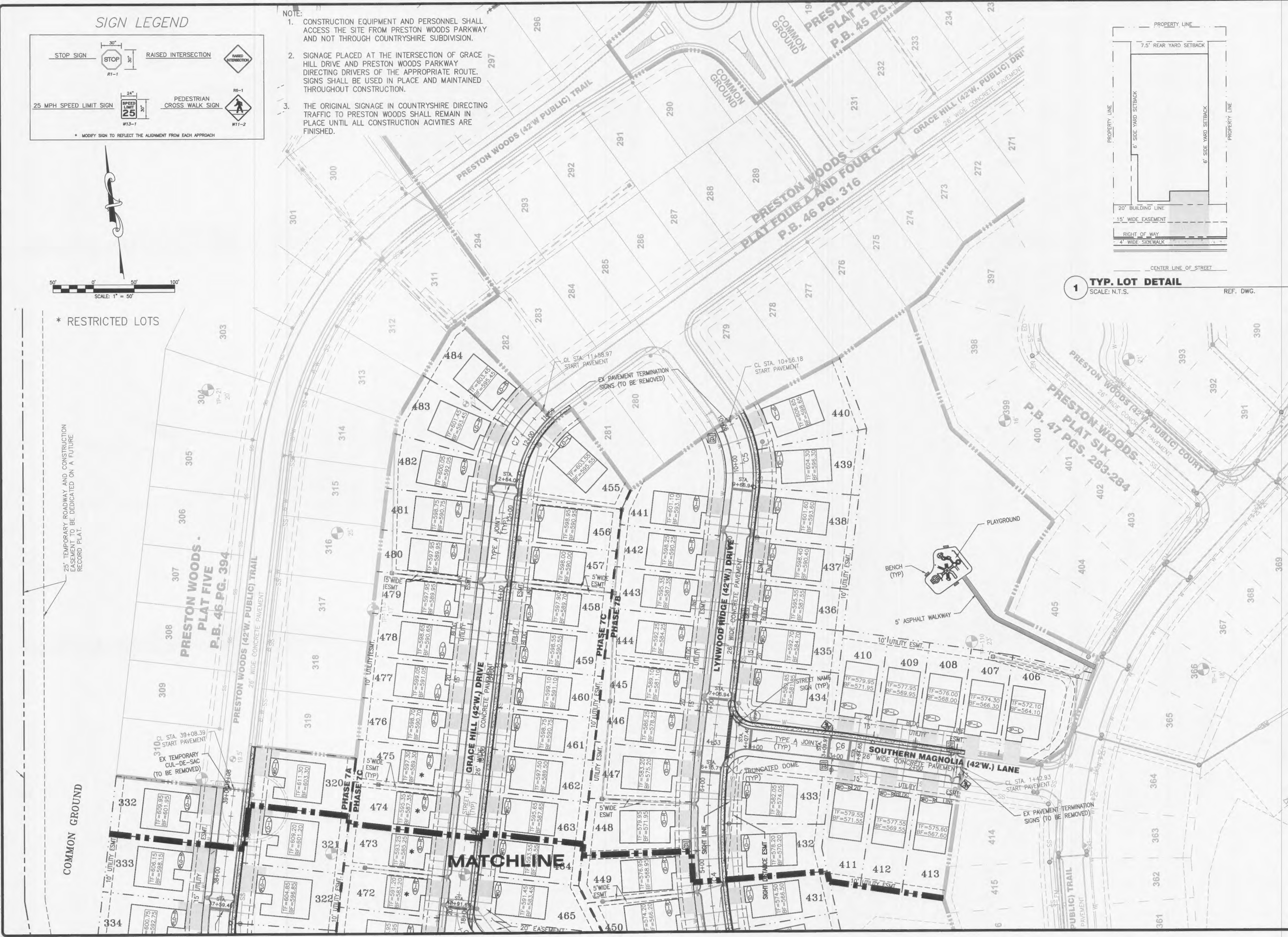
* RESTRICTED LOTS

25' TEMPORARY ROADWAY AND CONSTRUCTION EASEMENT TO BE DEDICATED ON A FUTURE RECORD PLAN.



1 TYP. LOT DETAIL
SCALE: N.T.S. REF. DWG.

USER: Toner_Short_TAB_Site_2
DATE: May 22, 2014 - 1:58:36 PM
DRAWING: S:\055\055013\13-0100_C3D-DWG_C-04\13-PHASE7_C3_PRT_SITE.dwg



NO.	REVISION DESCRIPTION	DATE
1	CITY COMMENTS	5/27/14
2	CITY, DSSO & WATER COMMENTS	5/27/14
3	CITY, DSSO, WATER & FIRE COMMENTS	5/29/14

DEVELOPER/OWNER:
FULTE GROUP
1707 CHESTERFIELD AIRPORT RD, SITE 120
CHESTERFIELD, MO 63005
PHONE: (636) 537-7129

CIVIL ENGINEERS
CORPORATE ENGINEERING CERTIFICATE #001785
OF MISSOURI REGISTERED PROFESSIONAL ENGINEERS
JOHN F. HARSHBARGER
E-29716
DATE: 5/22/14

PRESTON WOODS PHASE 7 IMPROVEMENT PLANS
PRESTON WOODS LANE OF FALLON, MO 63366
SITE PLAN

+ ST. CHARLES
1500 S. Fifth Street
Suite 307
St. Charles, MO 63033
636.678.7508 fax

DESIGN/CALC BY	MTS
DRAWN BY	MTS
CHECKED BY	JFH
DRAWING SCALE	
DATE	01/07/2013
Job Number	13-0109
Sheet Number	C3.2