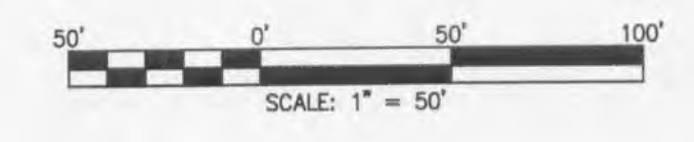
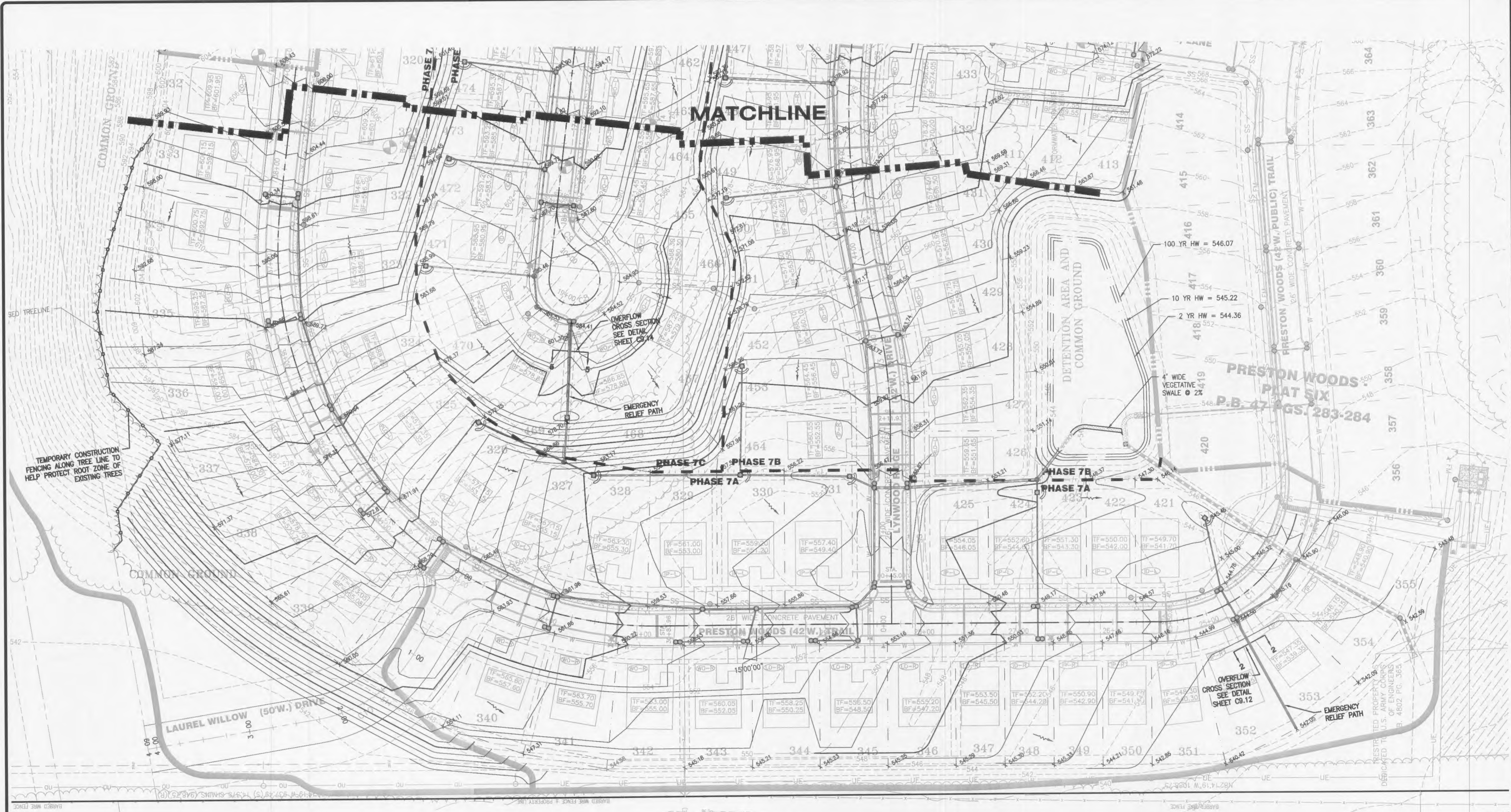


USER: To: Sheet 106 of 200, 1
 DRAWING: S:\Users\jacob2013\13-0109\CAD-DWG\DWG\C-OUT\IP-PHASE7A_0_P_PRT_GRADING.dwg



ST. CHARLES 1320 S. Fifth Street Suite 307 St. Charles, MO 63303 636.978.7088 fax		COLE CIVIL ENGINEERING / SURVEYING / PLANNING / LANDSCAPE ARCHITECTURE Cole & Associates, Inc.	
DESIGN/CALC BY MTS		DATE 01/07/2013	
DRAWN BY MTS		Job Number 13-0109	
CHECKED BY JFH		Sheet Number C4.1	
DRAWING SCALE -		DEVELOPER/OWNER: PULTE GROUP 1707 CHESTERFIELD AIRPORT RD. SITE 120 CHESTERFIELD, MO 63005 PHONE: (636) 537-7129	
PRESTON WOODS PHASE 7 IMPROVEMENT PLANS PRESTON WOODS LANE COTALLON, MO 63366		CIVIL ENGINEERS CORPORATE LICENSE NUMBER 000166 JOHN F. HARBARGER LICENSE NUMBER E-29716 CIVIL ENGINEER LICENSE NUMBER 000166 DATE: 3/1/2011	
GRADING PLAN		THE PROFESSIONAL WRITER, SIGNATURE AND PERSONAL SEAL APPEAR HEREON ASSUMES RESPONSIBILITY ONLY FOR WHAT APPEARS ON THIS PAGE AND DOES NOT ASSUME RESPONSIBILITY FOR ANY OTHER PARTS OF THE PROJECT. INSTRUMENTS NOT SEALED BY THE UNDERSIGNED PROFESSIONAL RELYING TO OR INTENDED TO BE USED FOR ANY PART OF THIS PROJECT IS THE PROCEED TO WHICH THIS PAGE REFERS.	
CITY COMMENTS 5/27/14 5/27/14 3/28/14		NO REVISION DESCRIPTION 1 2 3	