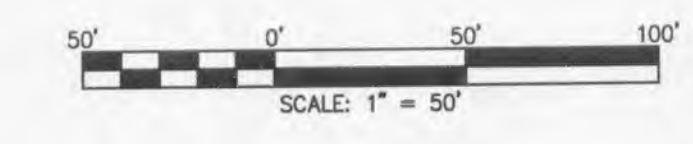
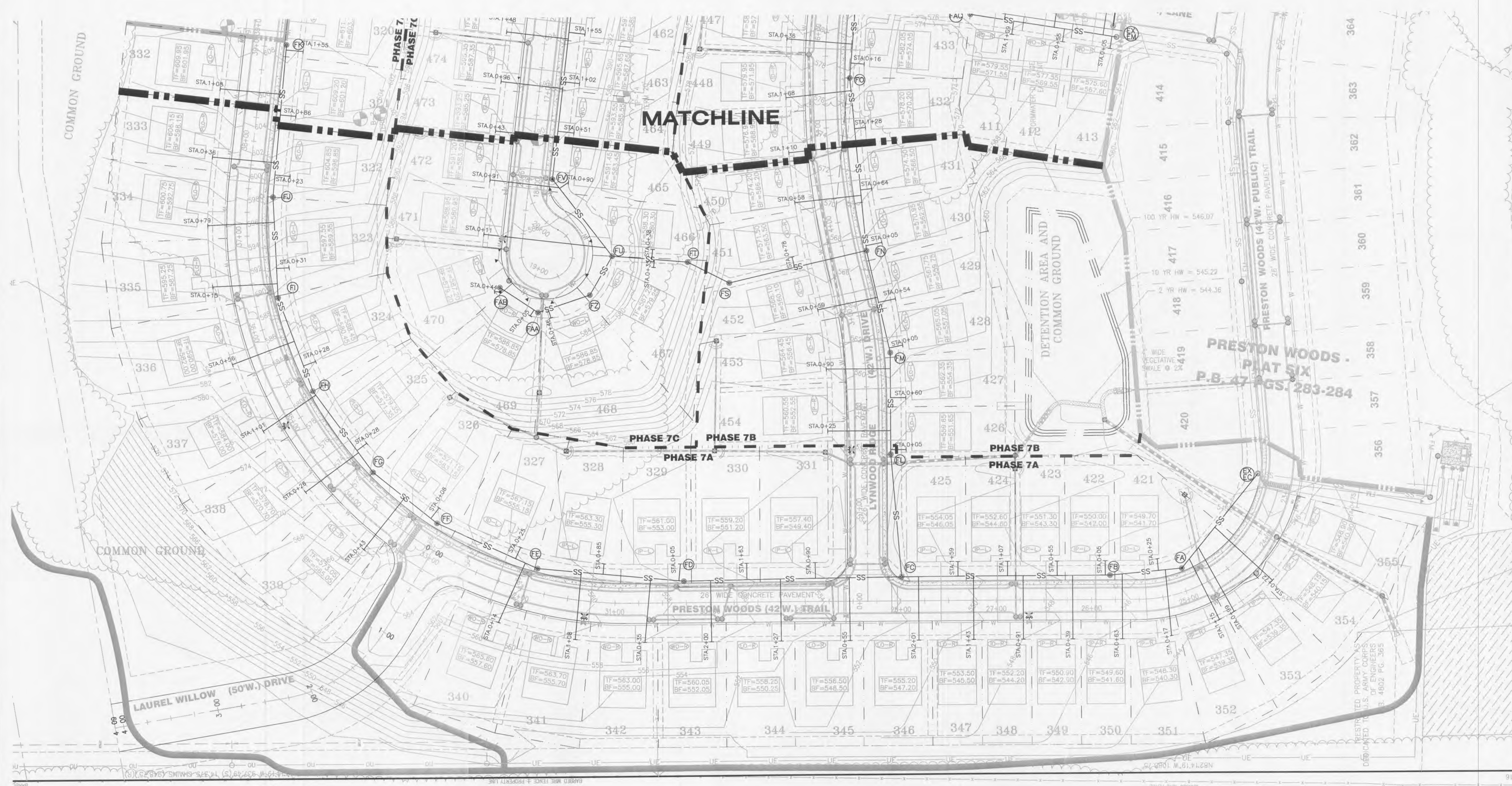


USER: Toler_Short TAB: SANITARY_1
 DATE: May 22, 2014 - 2:04:32 PM
 DRAWING: S:\085_Vols\2013\13-0109_CSD-DWG_C-04\IP-PHASE7_0_P_PIP_UTILIT.dwg



NOTE:
 1. ALL SANITARY LATERALS CROSSING UNDER THE PAVEMENT MUST HAVE PROPER ROCK BACKFILL AND REQUIRED COMPACTION.

N/
 LATHERME ELZIE REVOCABLE TRUST
 (CB 2364, PG 740)
 PARCEL ID 4-0046-5018-00-6

N/
 CATHERINE ELZIE REVOCABLE TRUST
 (CB 2364, PG 740)
 PARCEL ID 4-0046-5018-00-6

ST. CHARLES 1320 S. Fifth Street Suite 307 St. Charles, MO 63303 636.978.7908 fax		COLE CIVIL ENGINEERING / SURVEYING / PLANNING / LANDSCAPE ARCHITECTURE Cole & Associates, Inc.	
DESIGN/CALC BY MTS		DATE 01/07/2013	
DRAWN BY MTS		Job Number 13-0109	
CHECKED BY JFH		Sheet Number C5.1	
DRAWING SCALE -		DEVELOPER/OWNER: PULTE GROUP 17107 CHESTERFIELD AIRPORT RD. STE 120 CHESTERFIELD, MO 63005 PHONE: (636) 537-7129	
PRESTON WOODS PHASE 7 IMPROVEMENT PLANS PRESTON WOODS LANE OF FALLON, MO 63366		SANITARY PLAN	
CIVIL ENGINEERS CORPORATE ENGINEERING CERTIFICATE #001165 JOHN F. HARSHBARGER NUMBER E-29716 PROFESSIONAL REGISTERED ENGINEER IN MISSOURI		THE PROFESSIONAL WHOSE SIGNATURE AND PERSONAL SEAL APPEAR HEREON (PURSUANT TO SECTION 327.141 RSMo) ASSUMES FULL RESPONSIBILITY FOR ALL OTHER PLANS, SPECIFICATIONS, ESTIMATES, REPORTS, OR OTHER DOCUMENTS OR INSTRUMENTS NOT INDICATED ON THIS DRAWING. THE PROFESSIONAL'S LIABILITY IS LIMITED TO THE PROJECT TO WHICH THIS DRAWING RELATES. DATE: 5/27/14 5/27/14 3/29/14 NO CITY, CO, SD, WATER COMMENTS CITY, CO, SD, WATER & FIRE COMMENTS NO REVISION DESCRIPTION	