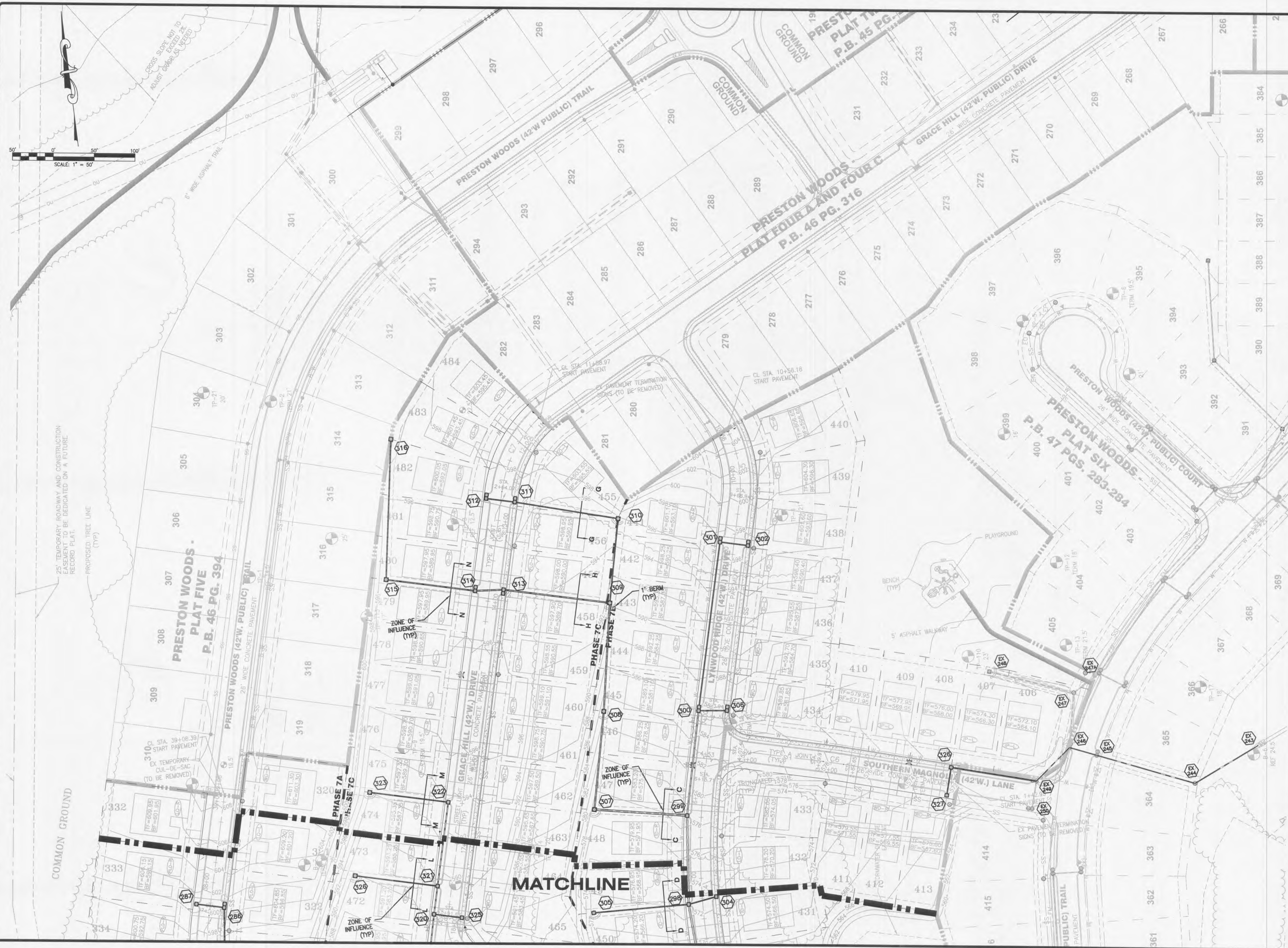


USER: Taylor, Sheet 110, STORM 2  
 DATE: May 22, 2014 11:20:55 AM  
 DRAWING: S:\085\1032013\13-0109\C5.0-C-OUT\PHASE7A\_C-OUT\PHASE7A\_C-OUT.PLT



NO.	REVISION DESCRIPTION	DATE
1	CITY COMMENTS	5/27/14
2	CITY, DESIG. & WATER COMMENTS	5/27/14
3	CITY, DESIG., WATER & FIRE COMMENTS	3/26/14

DEVELOPER/OWNER: **PULTE GROUP**  
 1707 CHESTERFIELD AIRPORT RD, STE 120  
 CHESTERFIELD, MO 63005  
 PHONE: (636) 537-7129

CIVIL ENGINEER  
 JOHN F. HARSHBARGER  
 LICENSE NUMBER E-29716  
 STATE OF MISSOURI REGISTERED PROFESSIONAL ENGINEER

PRESTON WOODS  
 PHASE 7  
 IMPROVEMENT PLANS  
 PRESTON WOODS LANE  
 OTTALON, MO 63366

**ST. CHARLES**  
 1328 S. Fifth Street  
 Suite 307  
 St. Charles, MO 63303  
 636.978.7508 fax

**COLE**  
 CIVIL ENGINEERING / SURVEYING / PLANNING / LANDSCAPE ARCHITECTURE  
 Cole & Associates, Inc.

DESIGN/CALC BY	JFH
DRAWN BY	MTS
CHECKED BY	JFH
DRAWING SCALE	
DATE	01/07/2013
Job Number	13-0109
Sheet Number	C5.4