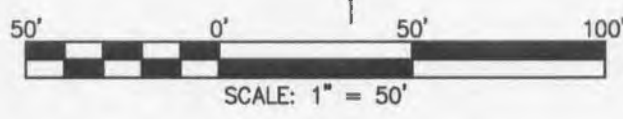
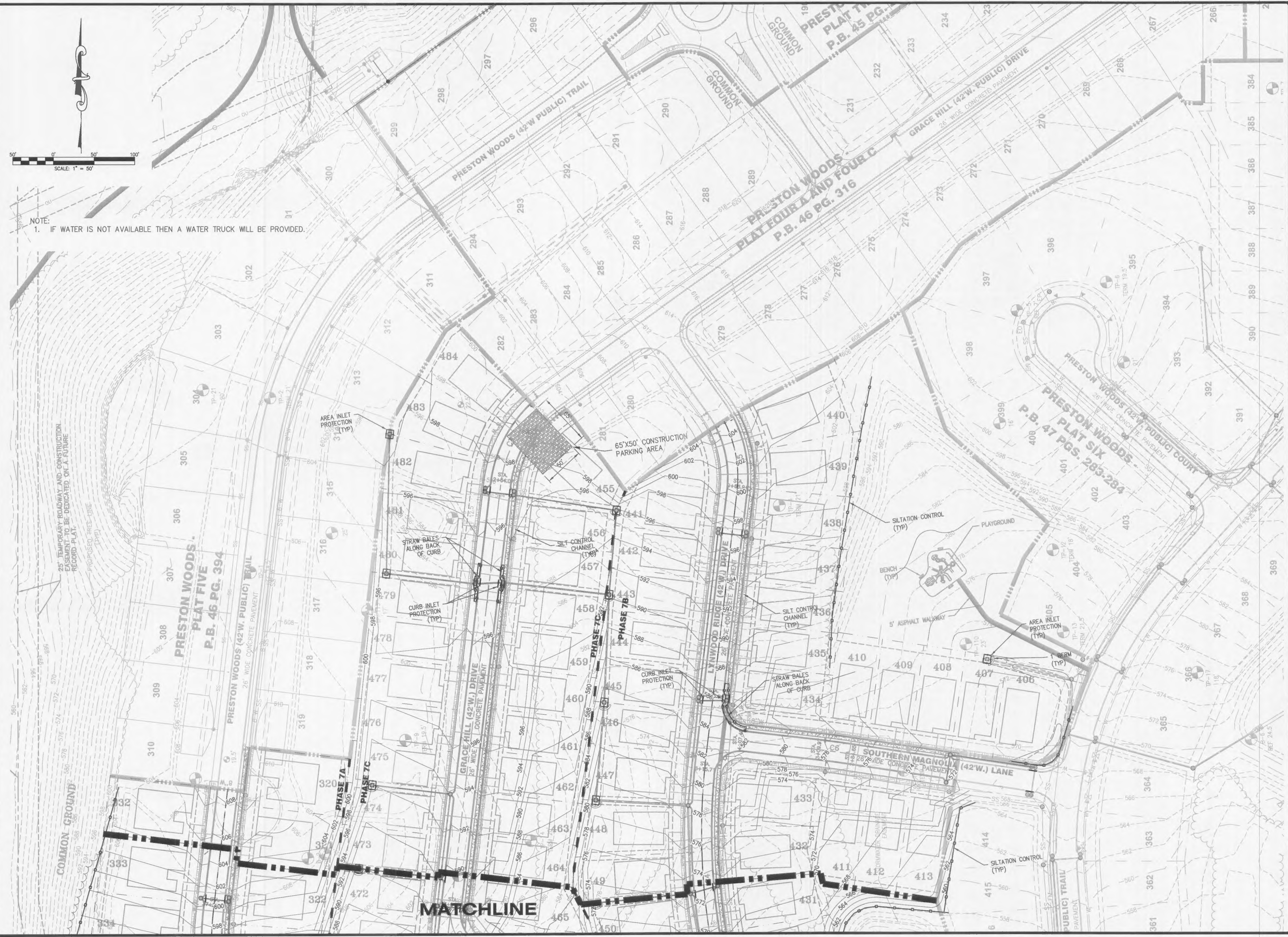


USER: Toner, Stuart, TAB, SWPP 2
 DATE: May 22, 2014 - 2:24:58 PM
 DRAWING: S:\005\005021\13-0108\CD-DWG\1-C-DWG\1-C-DWG\PHASE7_C-PH1_SWPP.dwg



NOTE:
 1. IF WATER IS NOT AVAILABLE THEN A WATER TRUCK WILL BE PROVIDED.

NO.	REVISION DESCRIPTION	DATE
3	CITY COMMENTS	5/27/14
2	CITY COMMENTS	5/27/14
1	CITY COMMENTS	5/27/14

DEVELOPER/OWNER:
PULTE GROUP
 17107 CHESTERFIELD AIRPORT RD, STE 120
 CHESTERFIELD, MO 63005
 PHONE: (636) 537-7129

CIVIL ENGINEERS
 MISSOURI REGISTRATION NO. 0001165
 JOHN F. HARSBARGER
 E-29716

**PRESTON WOODS
 PHASE 7
 IMPROVEMENT PLANS**
 PRESTON WOODS LANE
 OTTAWA, MO 63366

SWPP PLAN

ST. CHARLES
 1520 S. Fifth Street
 Suite 307
 St. Charles, MO 63033
 636.978.7308 (tel)
 636.978.7308 (fax)

cole
 CIVIL ENGINEERING / SURVEYING / PLANNING / LANDSCAPE ARCHITECTURE
 Cole & Associates, Inc.

DESIGN/CALC BY	JFH
DRAWN BY	MTS
CHECKED BY	JFH
DRAWING SCALE	
DATE	01/07/2013
Job Number	13-0109
Sheet Number	C8.2