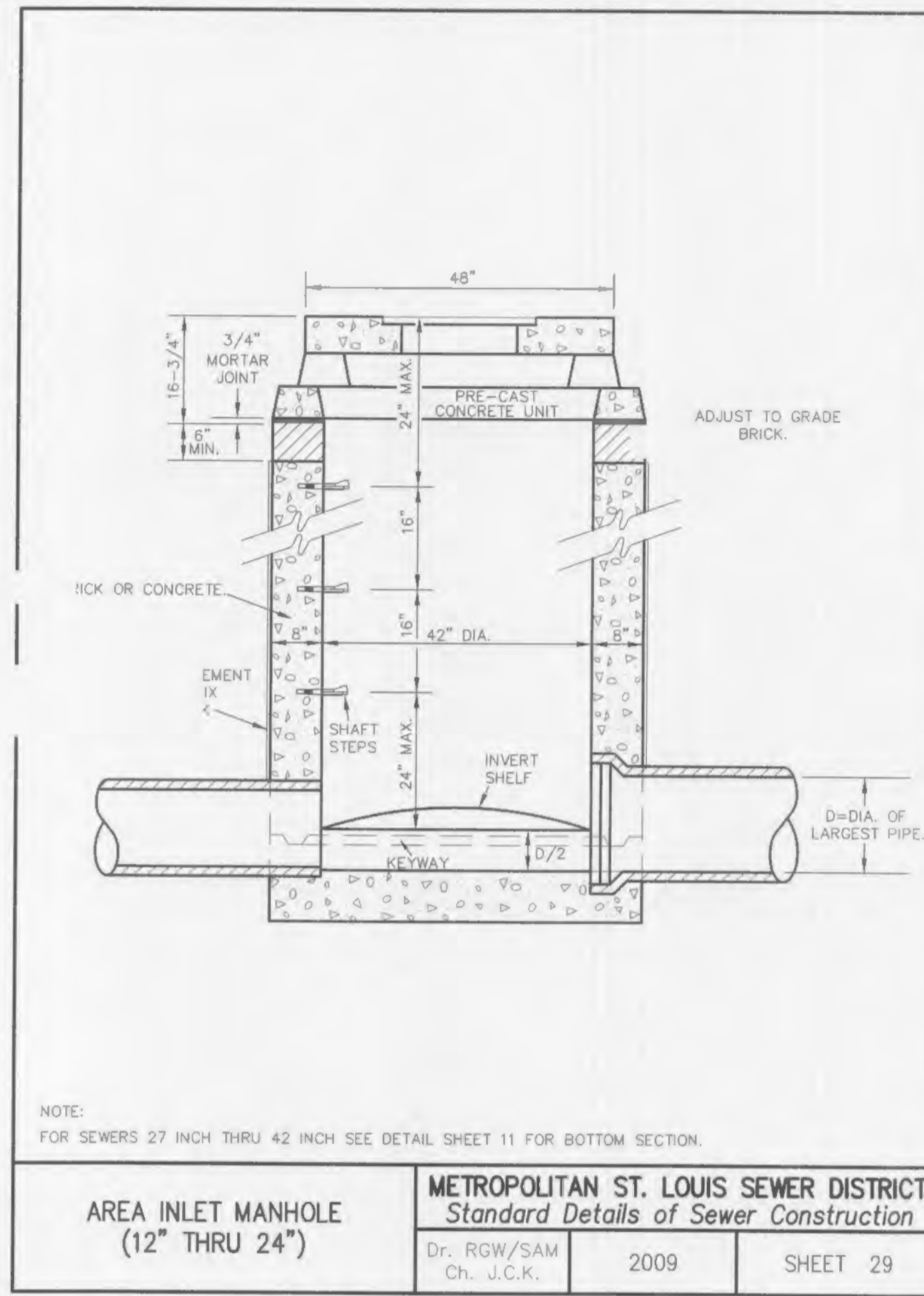
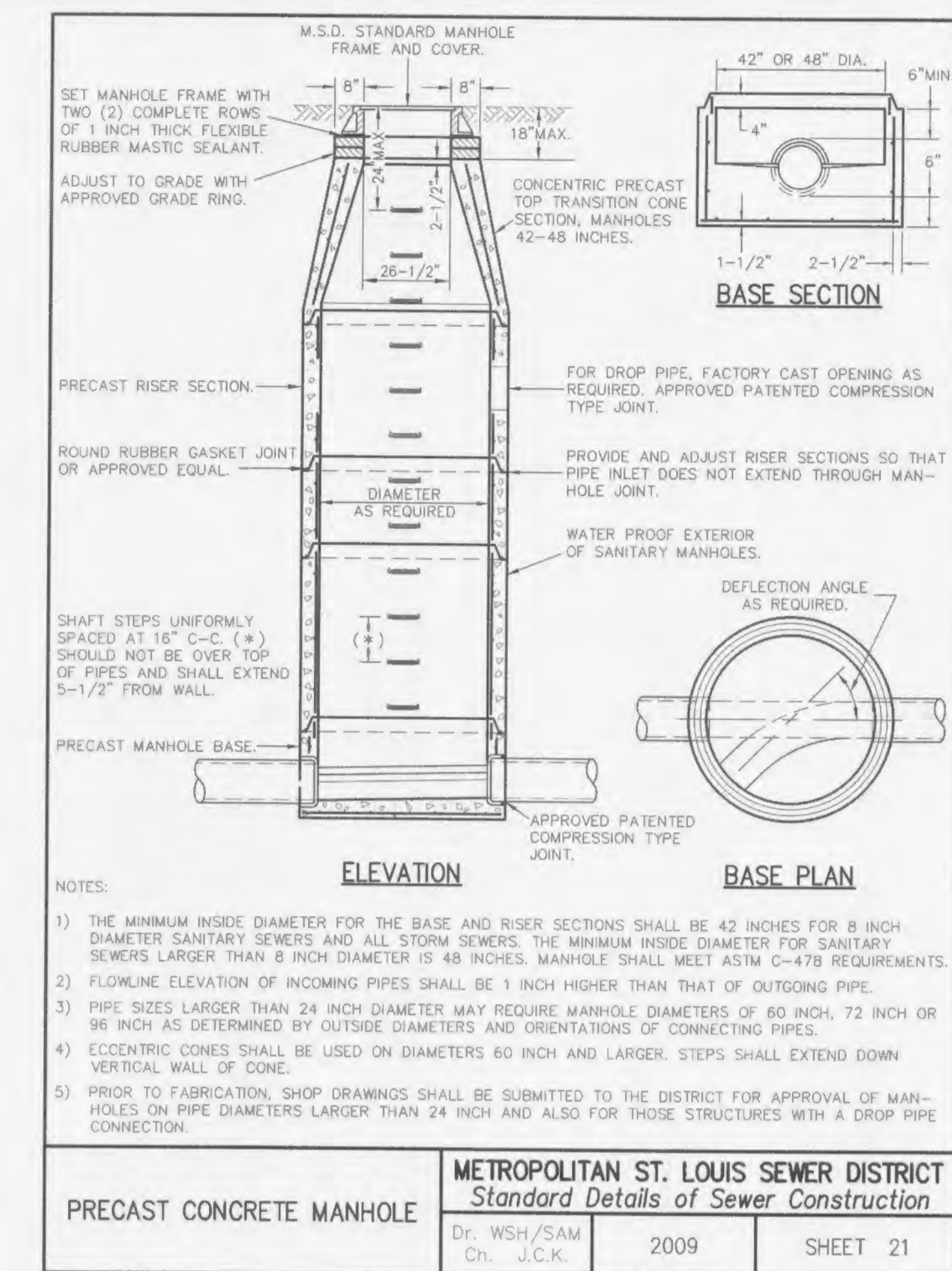


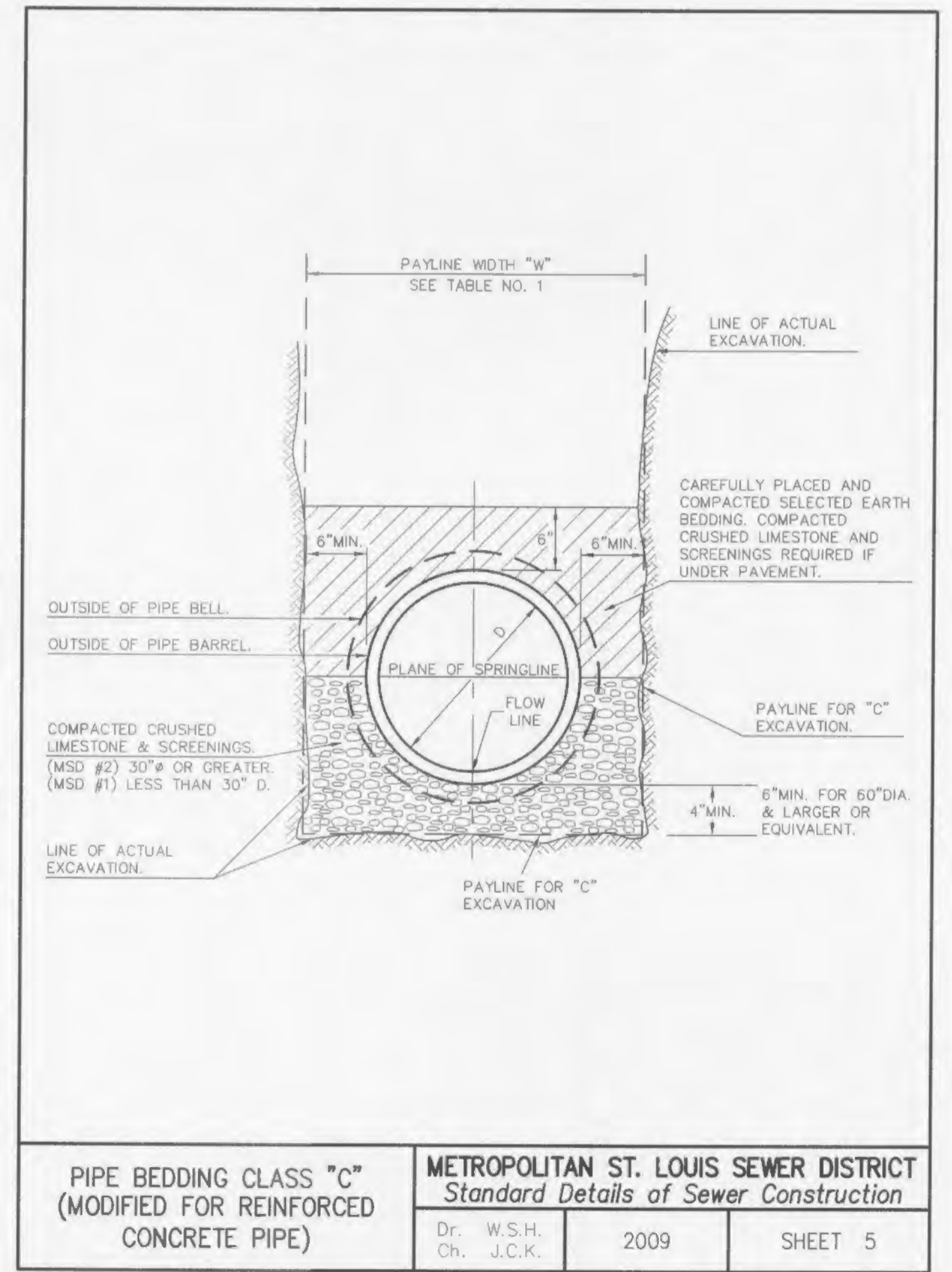
**6 FLARED END SECTION**  
SCALE: N.T.S. REF. DWG.



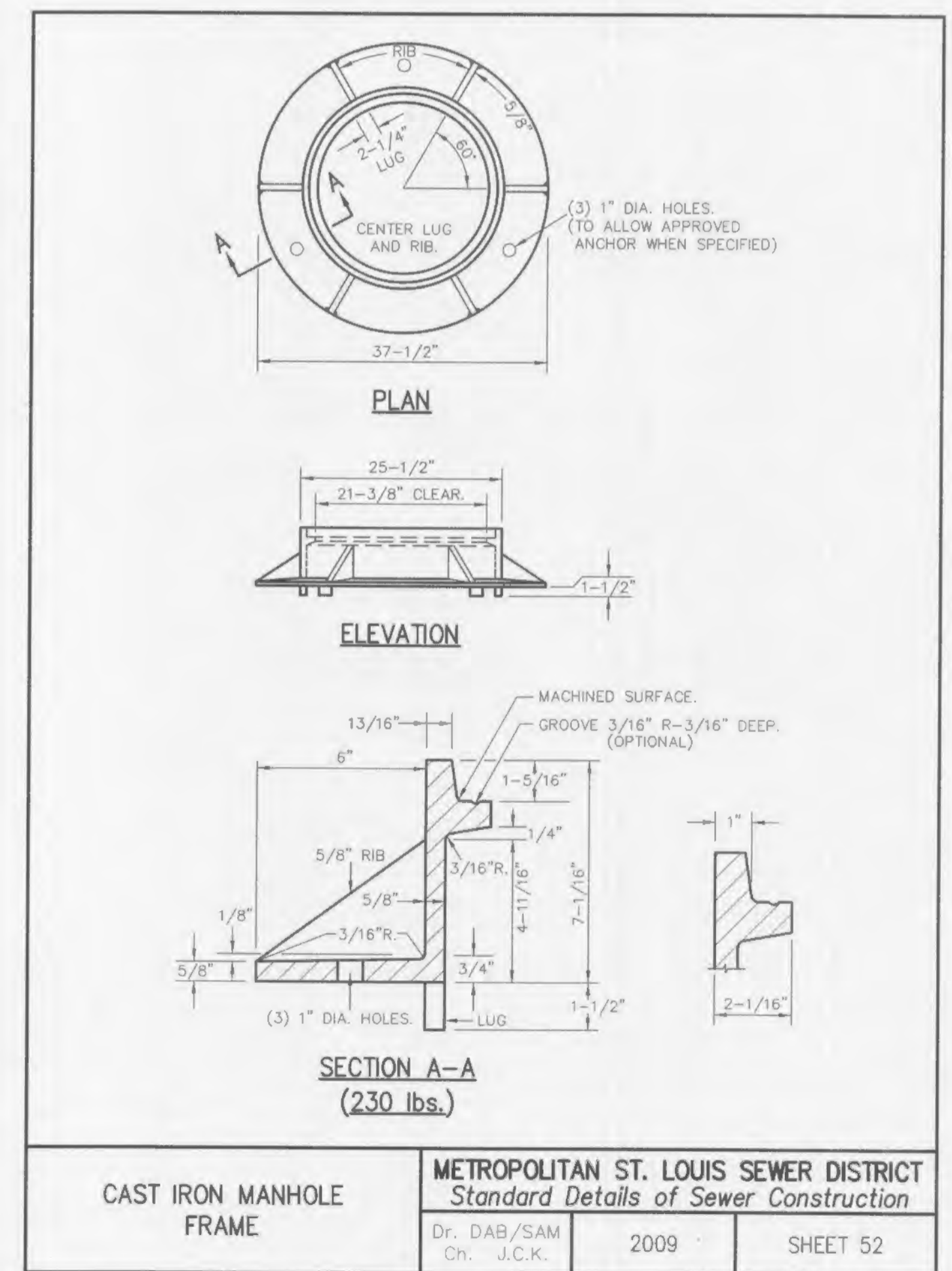
**5 AREA INLET DETAIL**  
SCALE: N.T.S. REF. DWG.



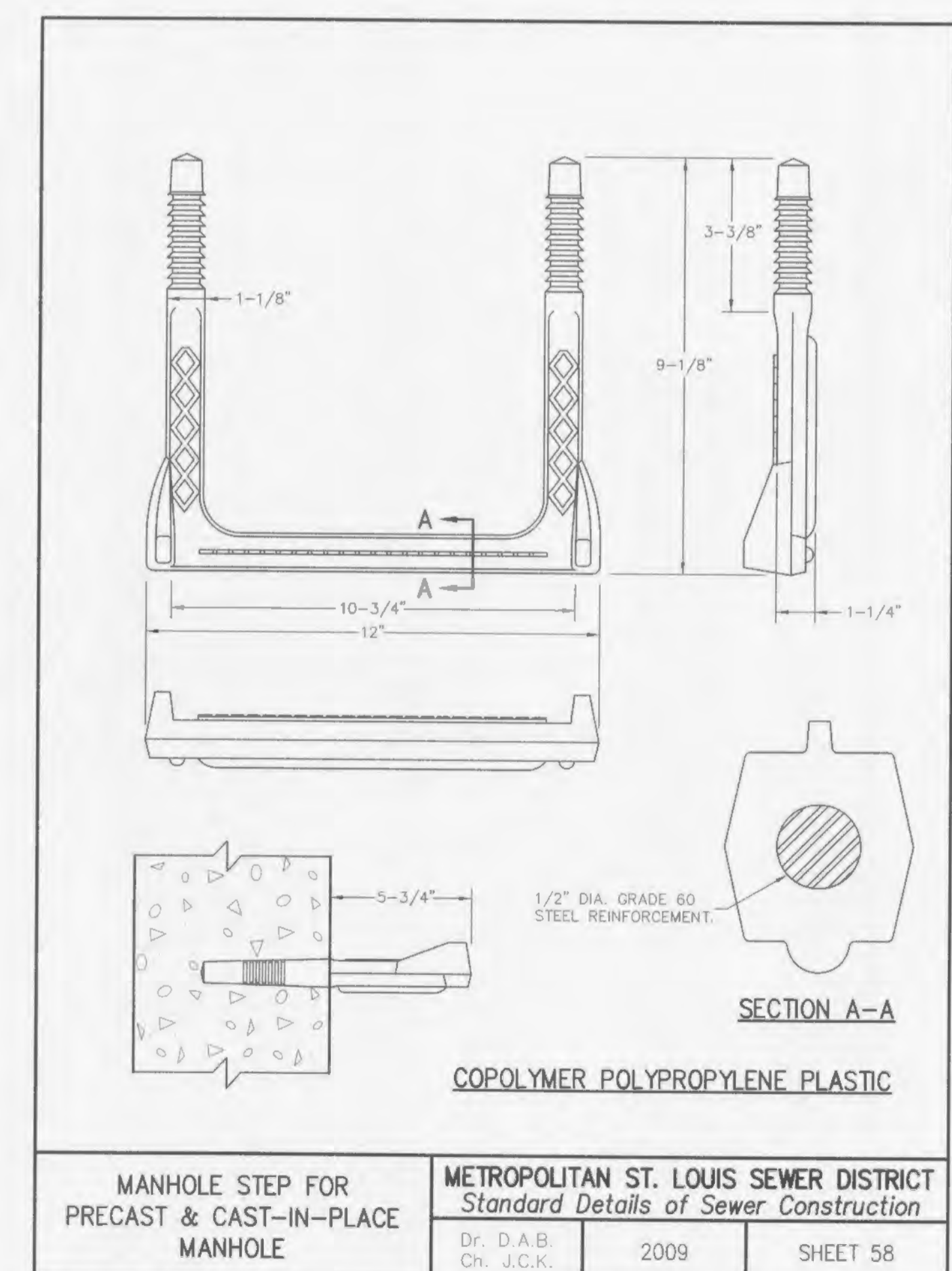
**4 MANHOLE DETAIL**  
SCALE: N.T.S. REF. DWG.



**3 PIPE BEDDING DETAIL**  
SCALE: N.T.S. REF. DWG.



**2 MANHOLE FRAME DETAIL**  
SCALE: N.T.S. REF. DWG.



**1 MANHOLE STEP DETAIL**  
SCALE: N.T.S. REF. DWG.

NOTE: ALL STORM SEWER STRUCTURES SHALL HAVE POSITIVE FLOW THROUGH THE STRUCTURE.

USER: Toler Sheet THB.DETAILS.3  
DATE: May 22, 2014 - 2:27:44 PM  
DRAWING: S:\VORR\Jab2013\13-0109\C3D-DWG\C-04\VP-FHASE7\VP\_PRT\_DETAILS.dwg

**PULTE GROUP**  
17107 CHESTERFIELD AIRPORT RD, STE 120  
CHESTERFIELD, MO 63005  
PHONE: (636) 537-7129

CITY COMMENTS  
3 2/27/14  
1 3/26/14

NO REVISION DESCRIPTION  
DATE

THE PROFESSIONAL ENGINEER'S SIGNATURE AND PERSONAL SEAL APPEAR HEREON. THIS SEAL IS VALID FOR THE STATE OF MISSOURI. ANY SEALING OR SIGNATURES MADE ON THIS PAGE AND LEGALS (REGULATIONS TO SECTION 411.01) MAY BE BASED ON THIS PAGE AND LEGALS. ANY OTHER DOCUMENTS OR INSTRUMENTS NOT SPECIFICALLY REFERENCED TO THIS PROJECT OR INSTRUMENTS TO BE USED FOR ANY PART OF THE PROJECT TO WHICH THIS SEAL APPLIES ARE VOID.

DATE: 5/27/14

CIVIL ENGINEERS  
CORPORATE  
ENGINEERING  
CERTIFICATE  
NUMBER  
1001160

JOHN F. HARSHBARGER  
REGISTERED PROFESSIONAL ENGINEER  
STATE OF MISSOURI  
NUMBER  
E-29716

**PRESTON WOODS**  
PHASE 7  
IMPROVEMENT PLANS  
PRESTON WOODS LANE  
O'FALLON, MO 63366

**cole**  
CIVIL ENGINEERING / SURVEYING / PLANNING / LANDSCAPE ARCHITECTURE  
Cole & Associates, Inc.

DESIGN/CALC BY: MTS  
DRAWN BY: MTS  
CHECKED BY: JFH  
DRAWING SCALE: -  
DATE: 01/07/2013  
Job Number: 13-0109  
Sheet Number: C9.3