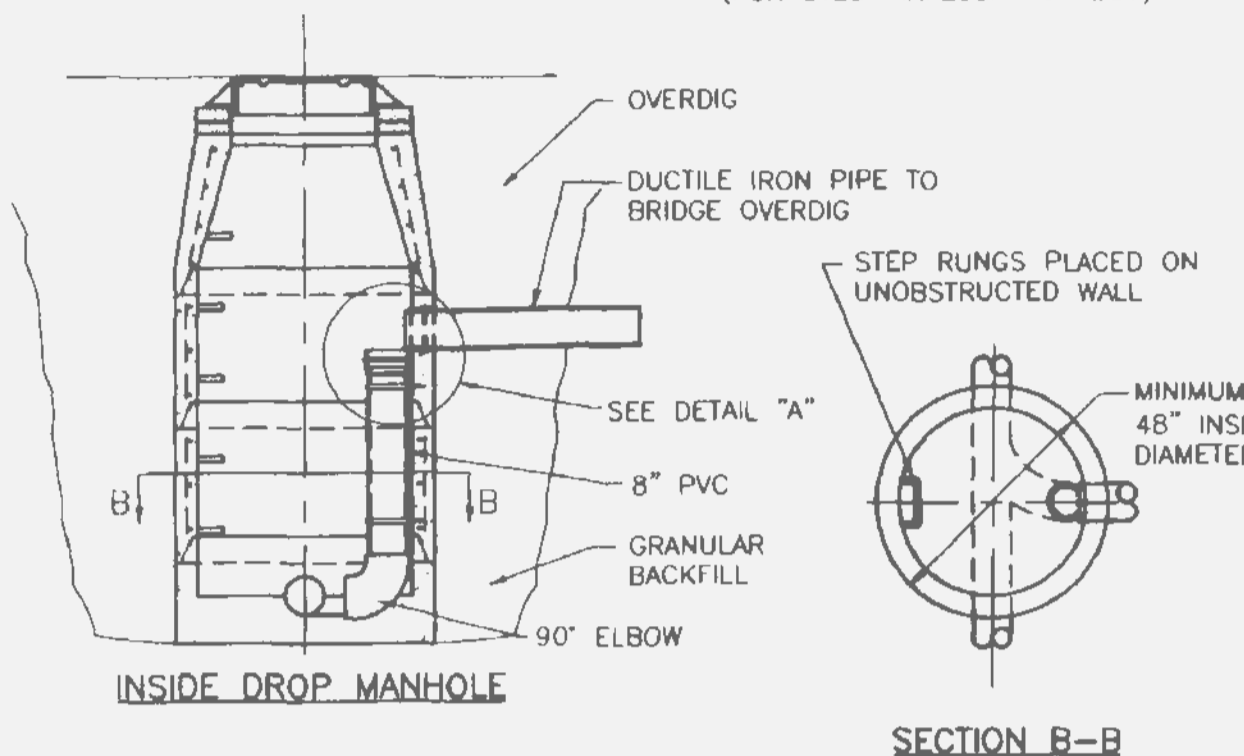


DETAIL 'A' STANDARD DROP PIPE  
DETAIL 'A' MODIFIED DROP PIPE (FOR STEEP INFLUENT GRADES)

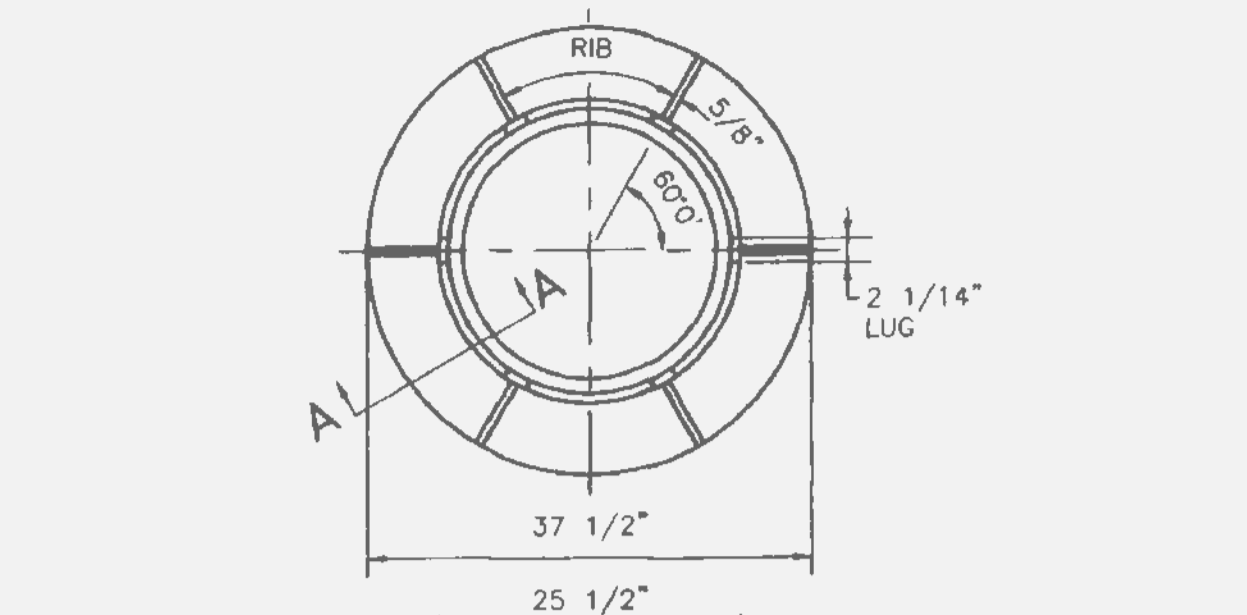


INSIDE DROP MANHOLE  
SECTION B-B

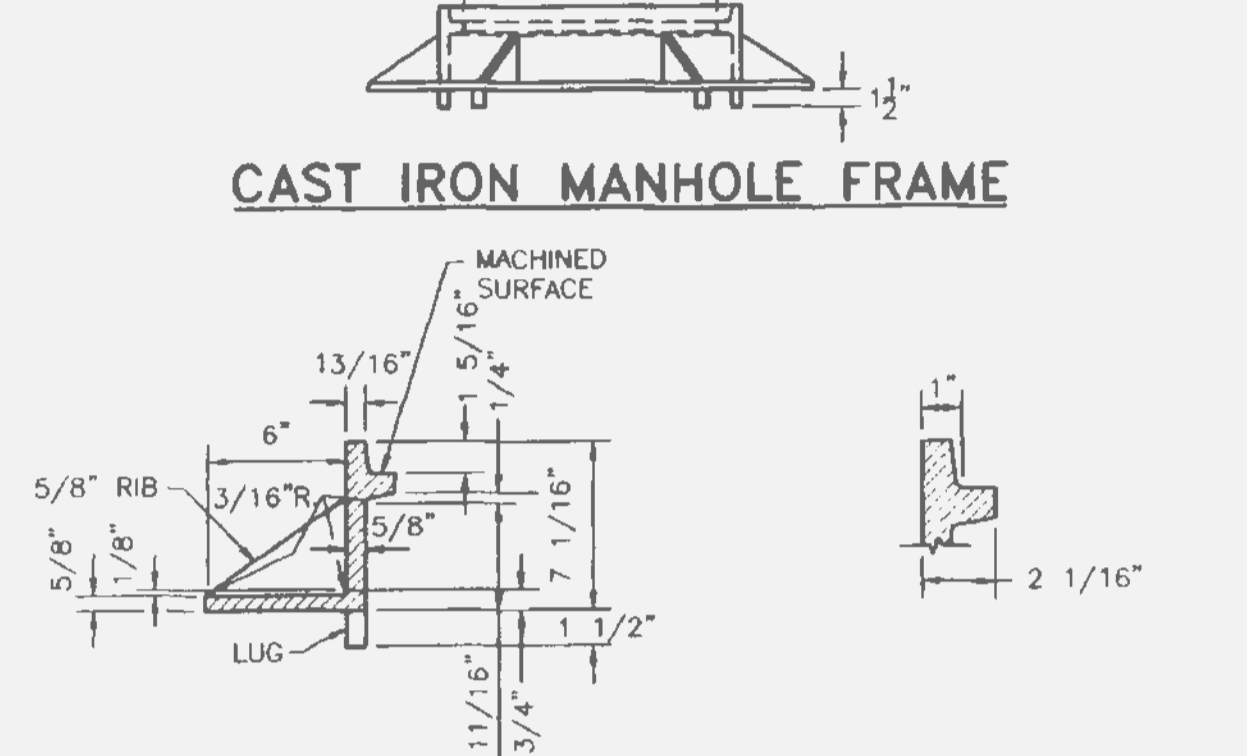
NOTE: ALL INVERTS SHALL HAVE POSITIVE DRAINAGE THROUGH MANHOLE.

**Duckett Creek Sanitary District**

Drawn By: BSM	App By: KLA	Detail No.
Chd By: MDOB	Date: 01-10-00	10



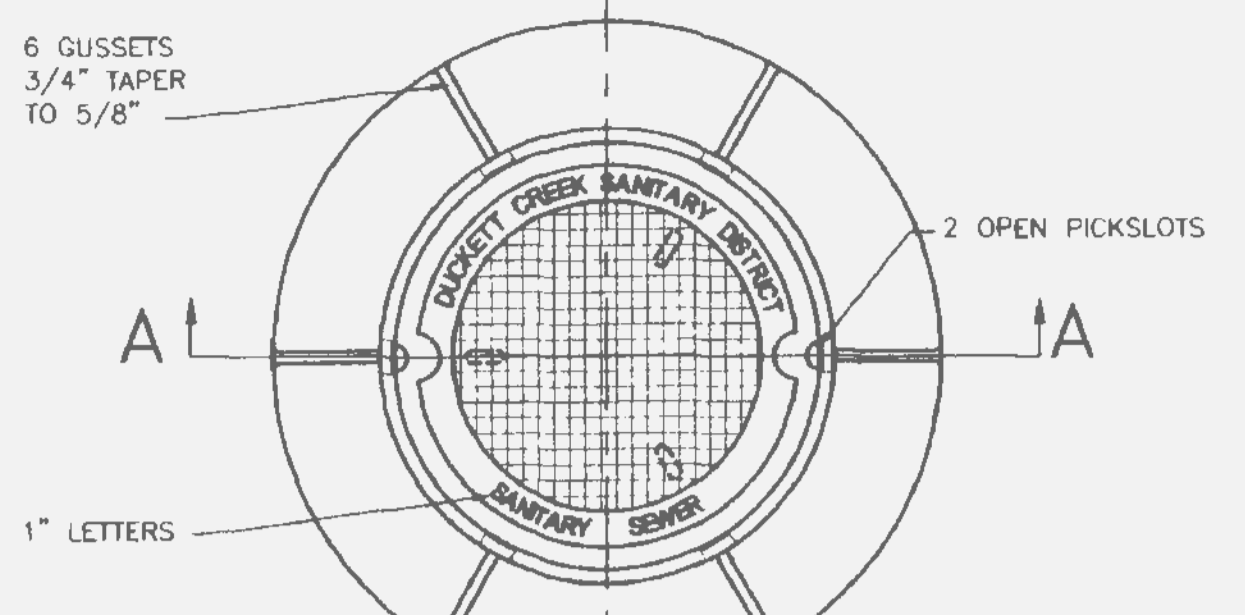
CAST IRON MANHOLE FRAME



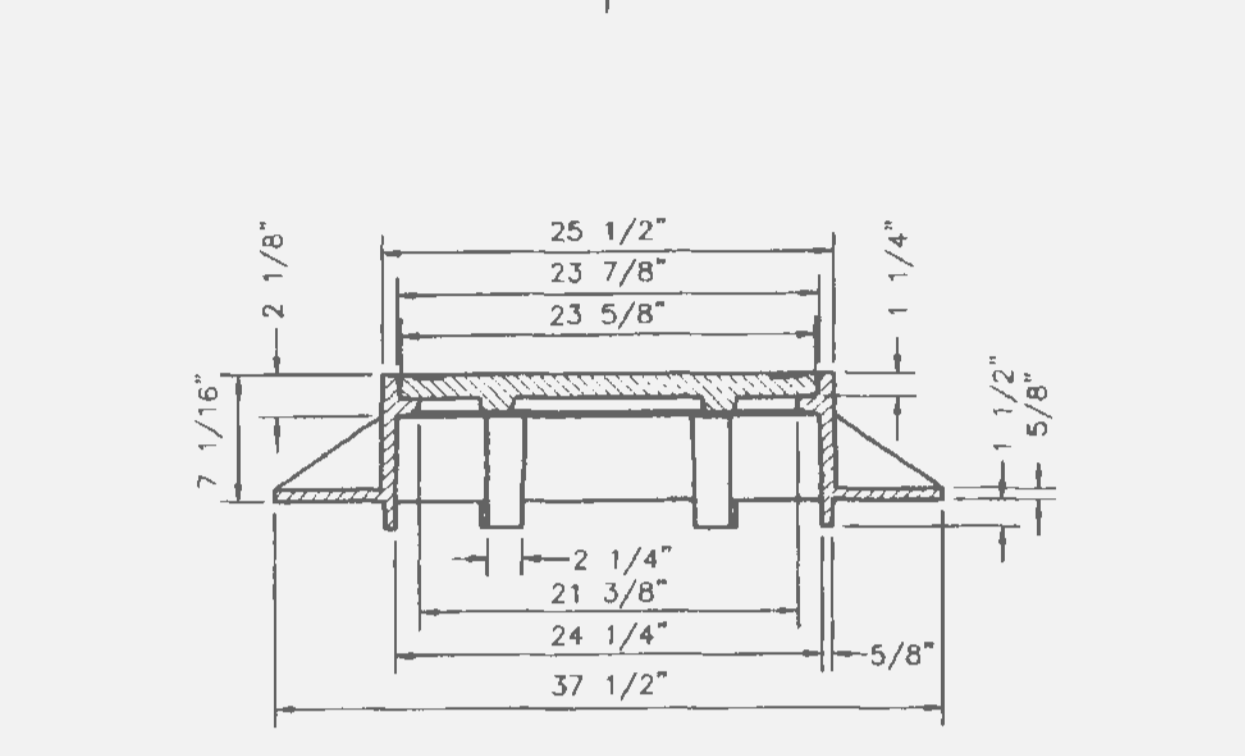
SECTION A-A (230 lbs)

**Duckett Creek Sanitary District**

Drawn By: BSM	App By: KLA	Detail No.
Chd By: MDOB	Date: 01-14-00	11



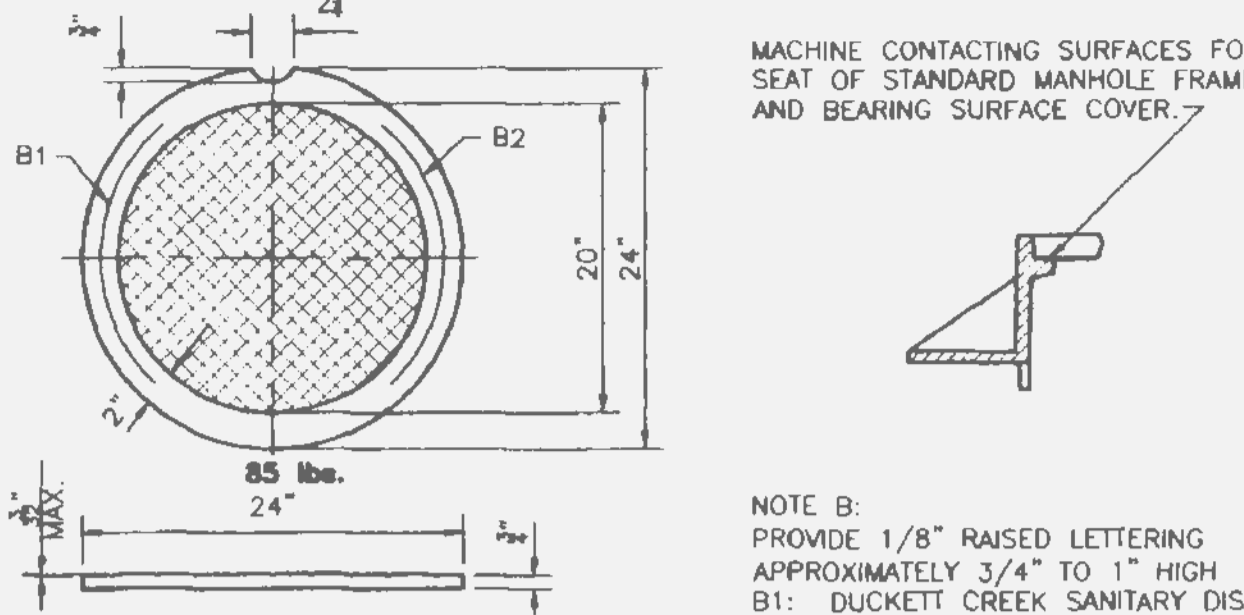
DUCKETT CREEK SANITARY DISTRICT MANHOLE FRAME AND COVER



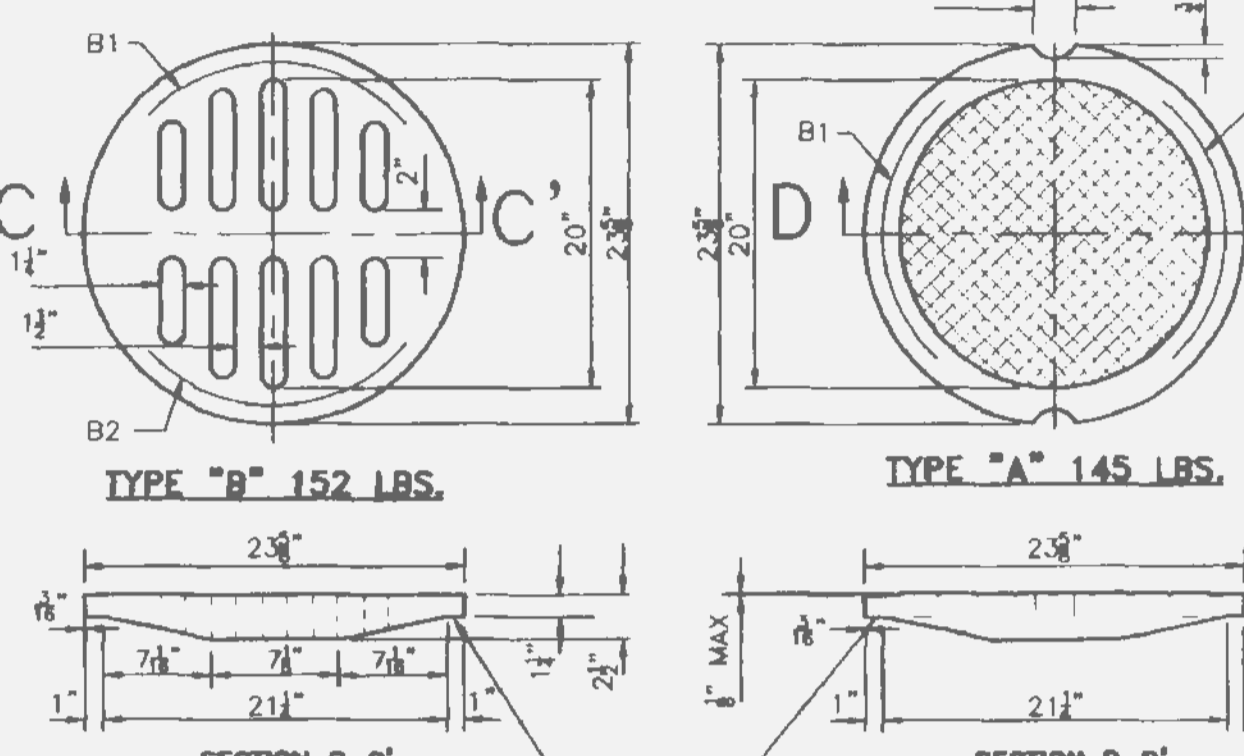
SECTION A-A

**Duckett Creek Sanitary District**

Drawn By: BSM	App By: KLA	Detail No.
Chd By: MDOB	Date: 01-14-00	12



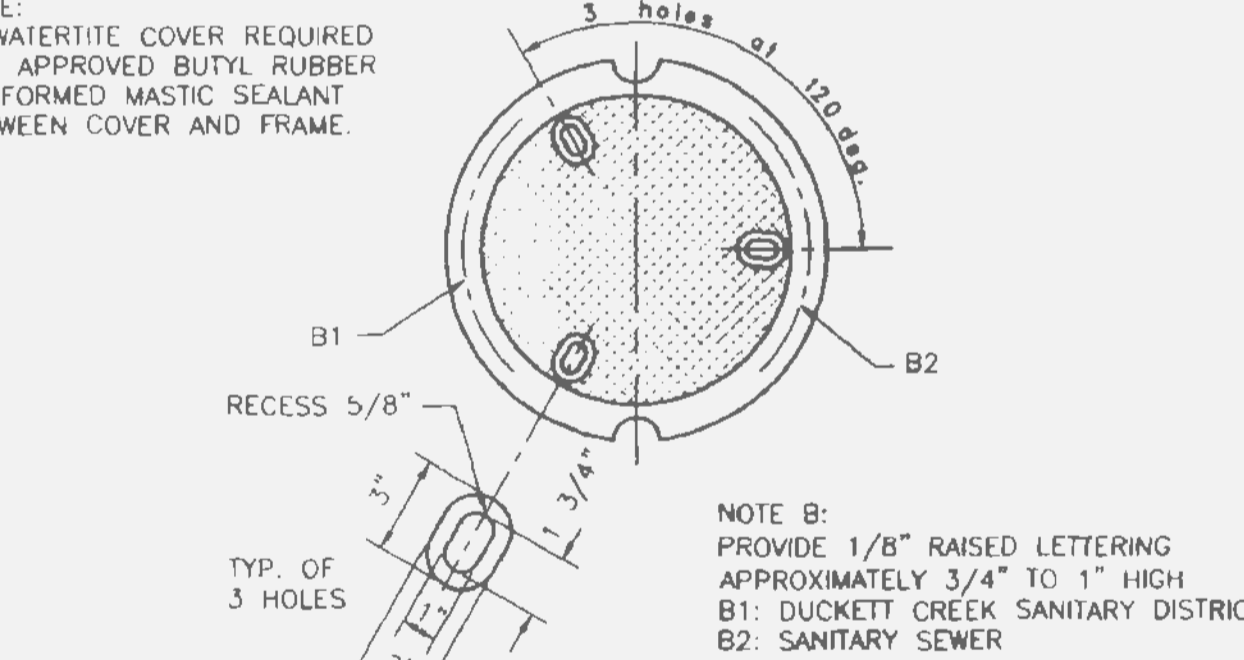
STANDARD CAST IRON INLET COVER



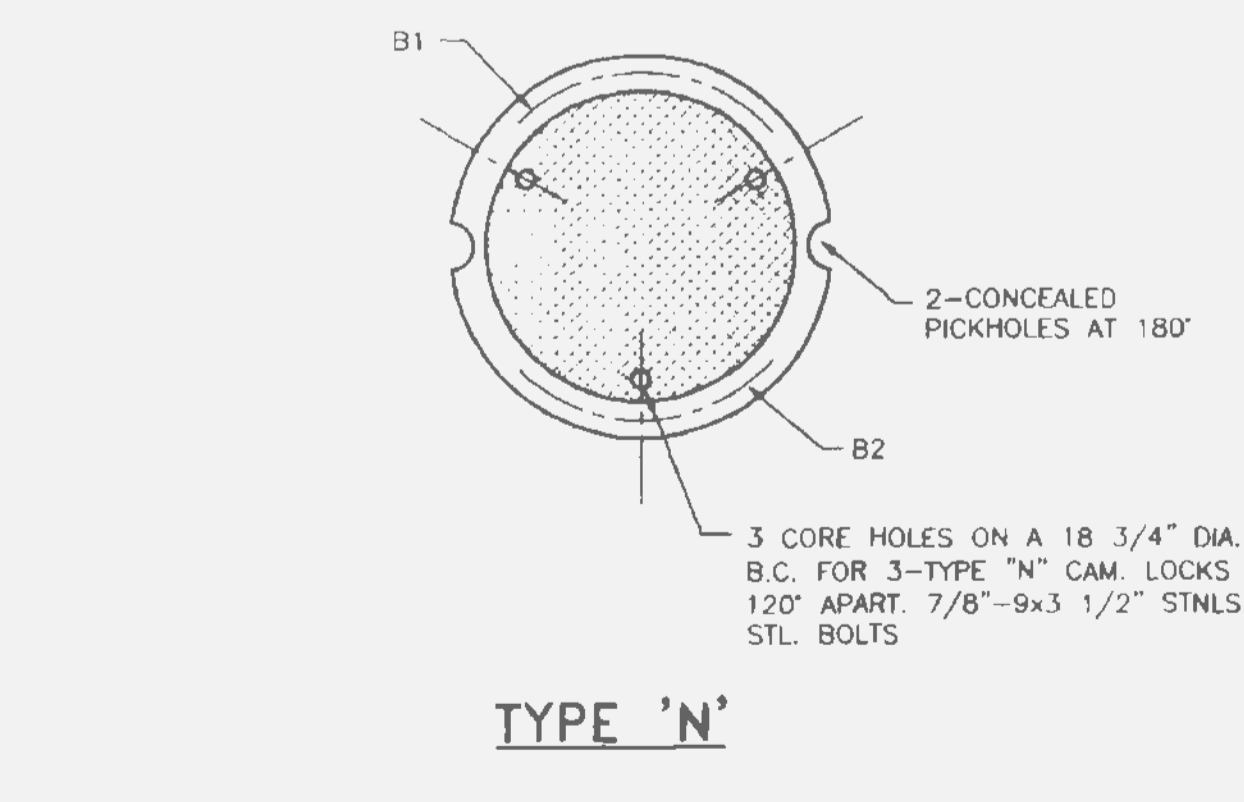
PLAN OF SLOTTED-TYPE COVER  
PLAN OF CLOSED-TYPE COVER

**Duckett Creek Sanitary District**

Drawn By: BSM	App By: KLA	Detail No.
Chd By: MDOB	Date: 12-22-00	13



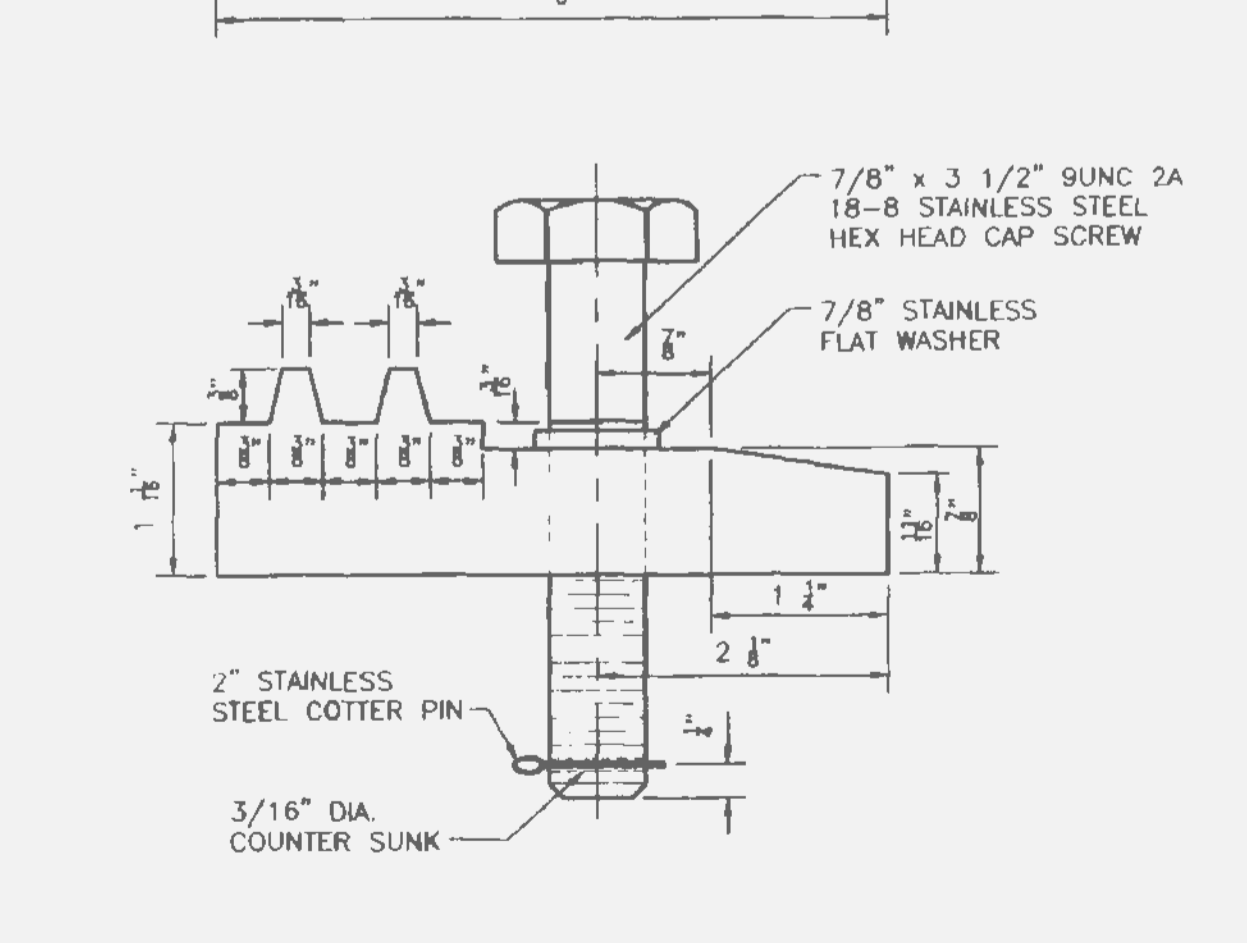
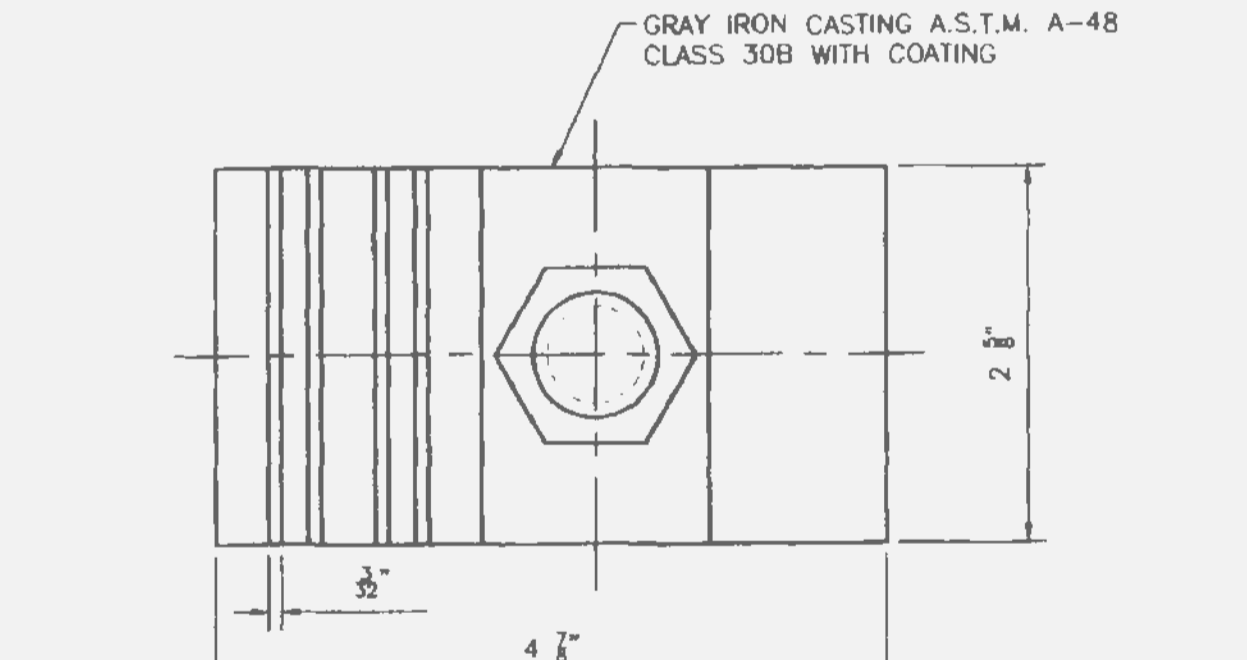
TYPE 'T'



TYPE 'N'

**Duckett Creek Sanitary District**

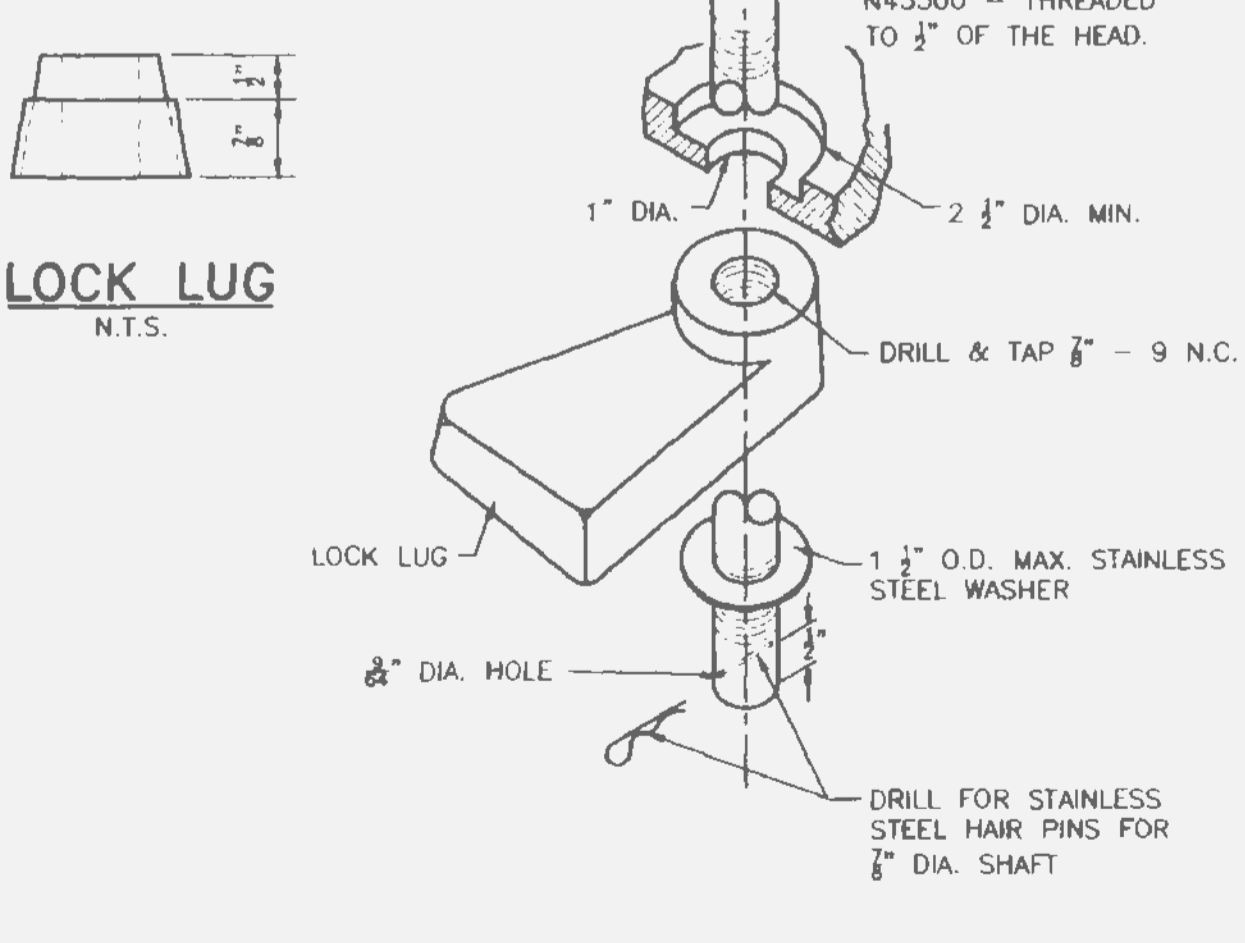
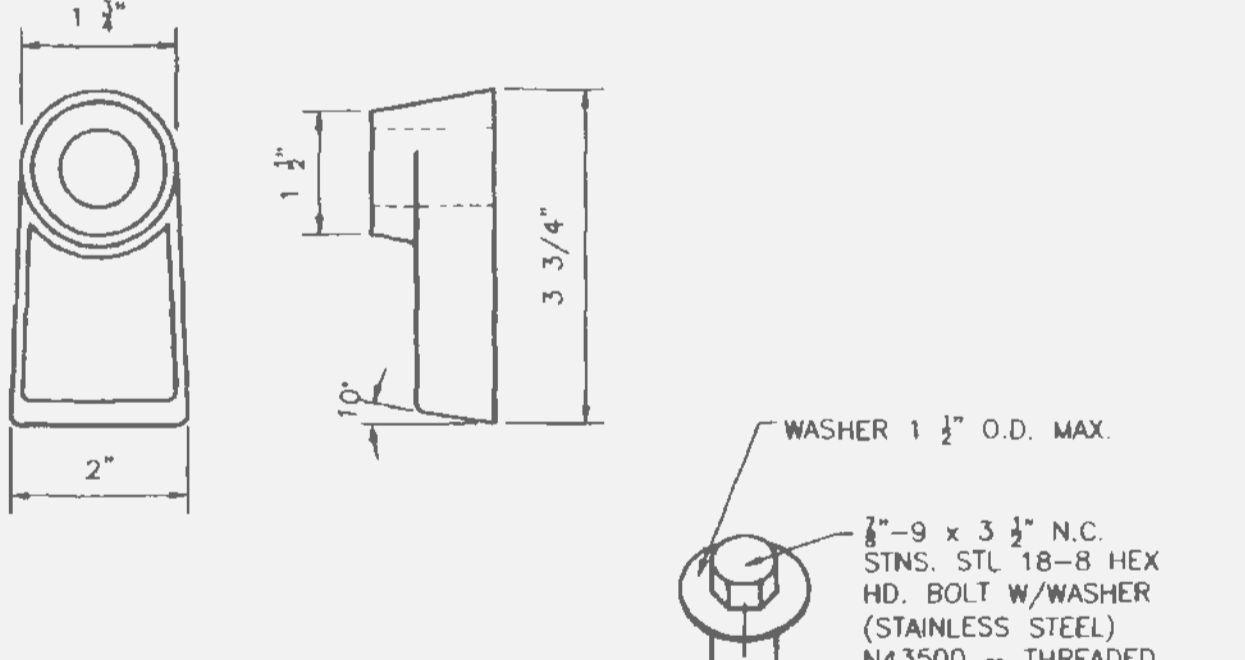
Drawn By: BSM	App By: KLA	Detail No.
Chd By: MDOB	Date: 12-27-00	14



LOCKING DEVICE FOR TYPE "T" LOCK TYPE MANHOLE COVER

**Duckett Creek Sanitary District**

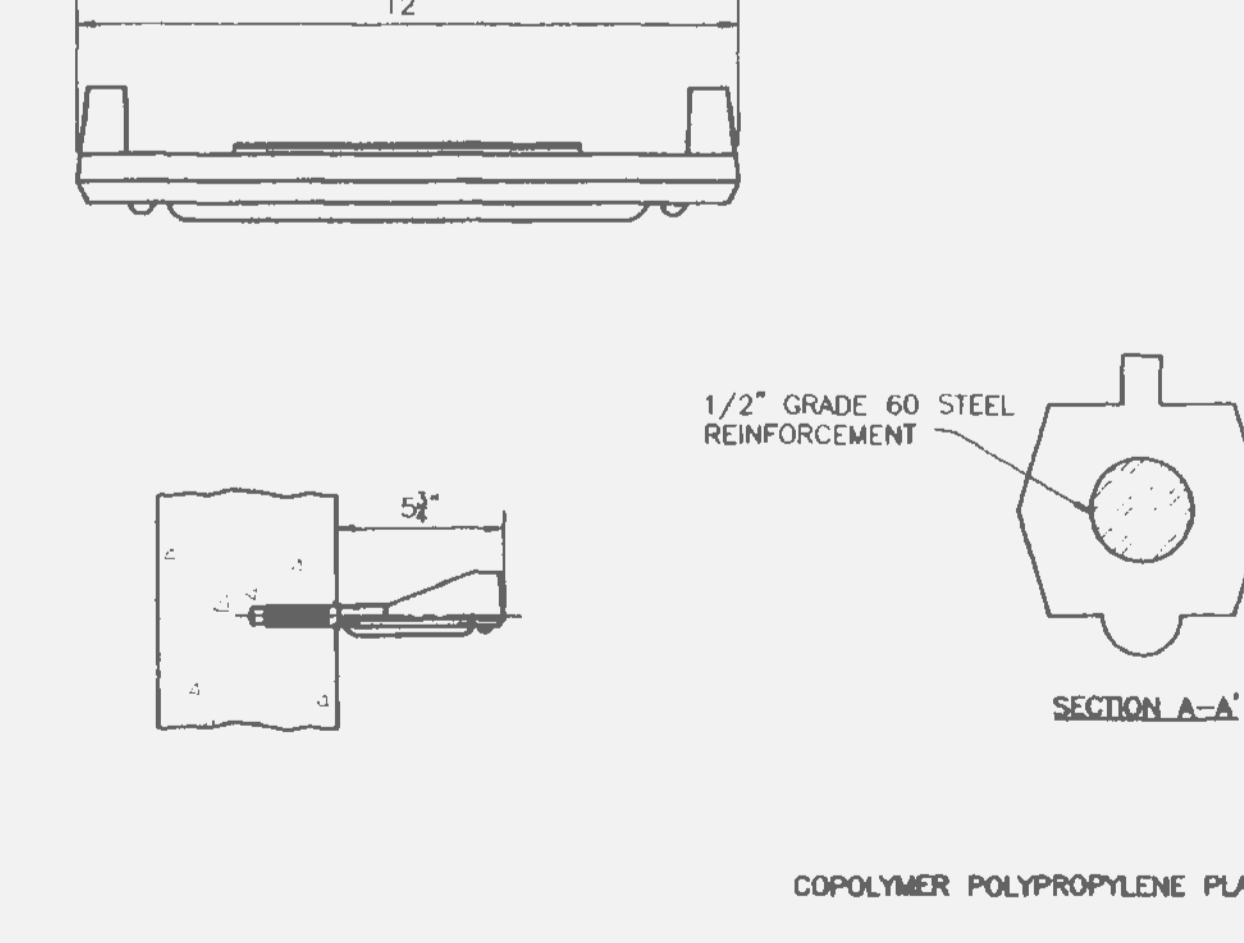
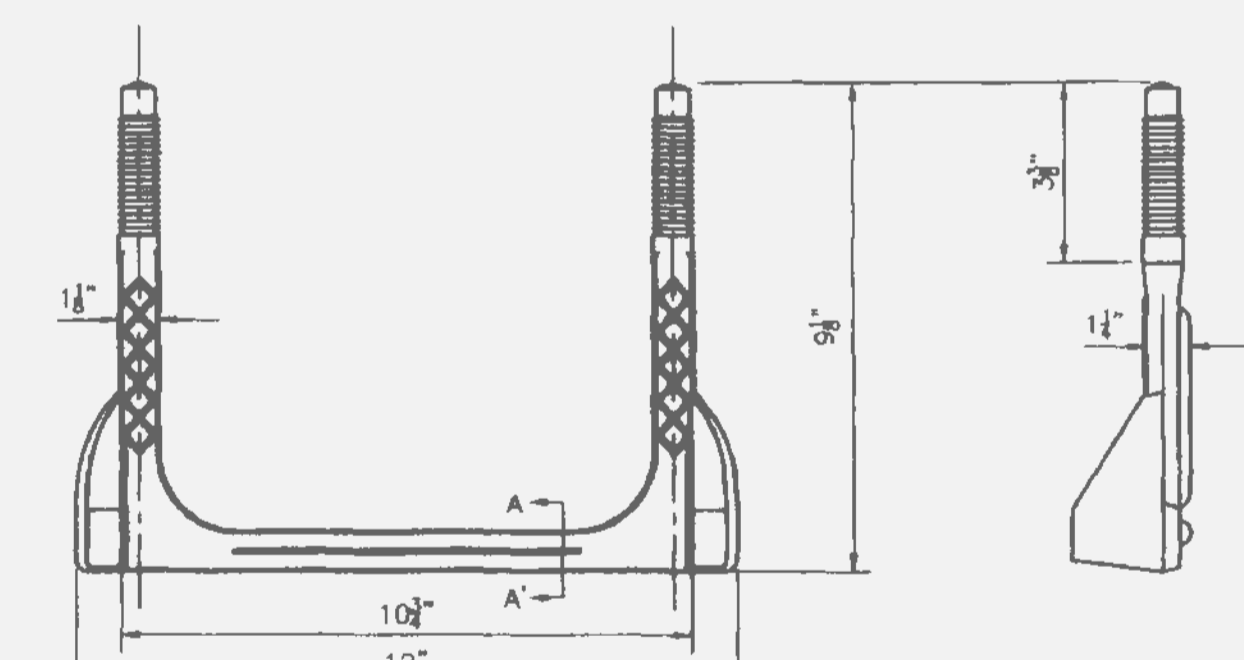
Drawn By: BSM	App By: KLA	Detail No.
Chd By: MDOB	Date: 12-27-00	15



LOCKING DEVICE FOR TYPE "N" LOCK TYPE MANHOLE COVER

**Duckett Creek Sanitary District**

Drawn By: BSM	App By: KLA	Detail No.
Chd By: MDOB	Date: 12-28-00	16



MANHOLE STEP PRECAST MANHOLE

**Duckett Creek Sanitary District**

Drawn By: BSM	App By: KLA	Detail No.
Chd By: MDOB	Date: 1-3-01	18

USER: Topor; Sheet: TAB: DETAILS 7  
DATE: May 22, 2014 - 2:28:20 PM  
DRAWING: S:\WORKS\2013\13-0109\CD-DWG-C-OUTLINE-PHASE7\0\_P\_P17\_DETAILS.dwg

3	CITY COMMENTS	5/27/14
3	CITY COMMENTS	5/27/14
1	CITY DCD WATER COMMENTS	3/26/14
1	CITY DCD WATER & FIRE COMMENTS	
NO	REVISION DESCRIPTION	DATE

DEVELOPER/OWNER: **PULTE GROUP**  
1707 CHESTERFIELD AIRPORT RD, STE 120  
CHESTERFIELD, MO 63005  
PHONE: (636) 537-7129

THE PROFESSIONAL WHOSE SIGNATURE AND PERSONAL SEAL APPEAR HEREON ASSUMES RESPONSIBILITY ONLY FOR WHAT APPEARS ON THIS PAGE, AND DISCLAIMS ANY LIABILITY FOR ANY OTHER INFORMATION OR INSTRUMENTS NOT SPECIFICALLY REFERENCED IN THIS DRAWING. ESTIMATES, REPORTS, OR OTHER DOCUMENTS NOT SCALED BY THE UNDERSIGNED PROFESSIONAL RELATING TO, OR INTENDED TO BE USED FOR, ANY PART OR PARTS OF THE PROJECT TO WHICH THIS PAGE REFERS.

CIVIL ENGINEERS  
CORPORATE  
CERTIFICATE  
7001165

JOHN F. HANSHARGER  
E-29716

JOHN F. HANSHARGER  
E-29716

STATE OF MISSOURI REGISTERED PROFESSIONAL ENGINEER

**PRESTON WOODS**  
PHASE 7  
IMPROVEMENT PLANS  
PRESTON WOODS LANE  
O'FALLON, MO 63366

**SANITARY SEWER DETAILS**

**ST. CHARLES**  
1520 S. Fifth Street  
Suite 307  
St. Charles, MO 63301  
636.976.4051 ext

**cole**  
CIVIL ENGINEERING / SURVEYING / PLANNING / LANDSCAPE ARCHITECTURE  
Cole & Associates, Inc.

DESIGN/CALC BY:	MTS
DRAWN BY:	MTS
CHECKED BY:	JFH
DRAWING SCALE:	
DATE:	01/07/2013
Job Number:	13-0109
Sheet Number:	C9.7