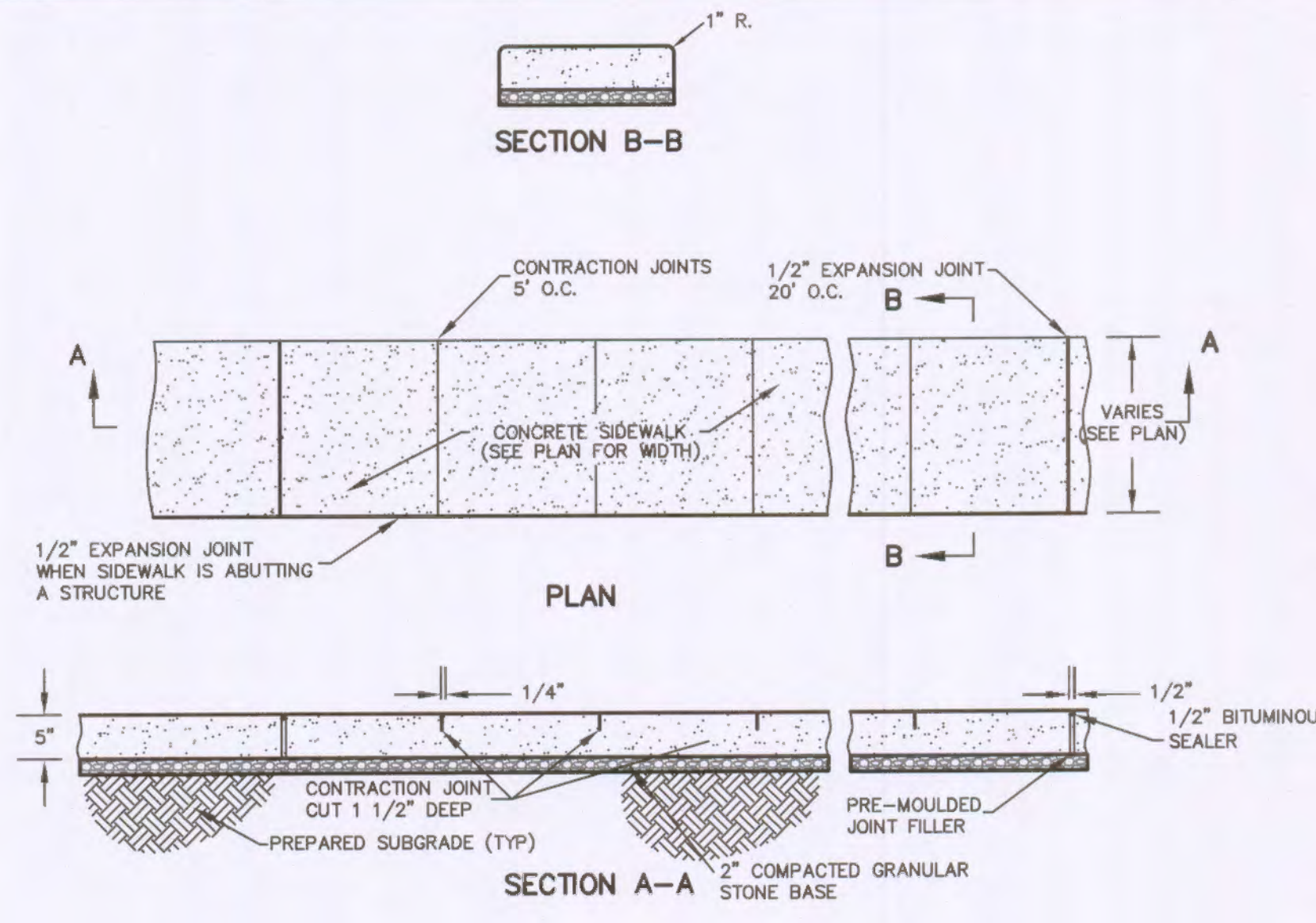
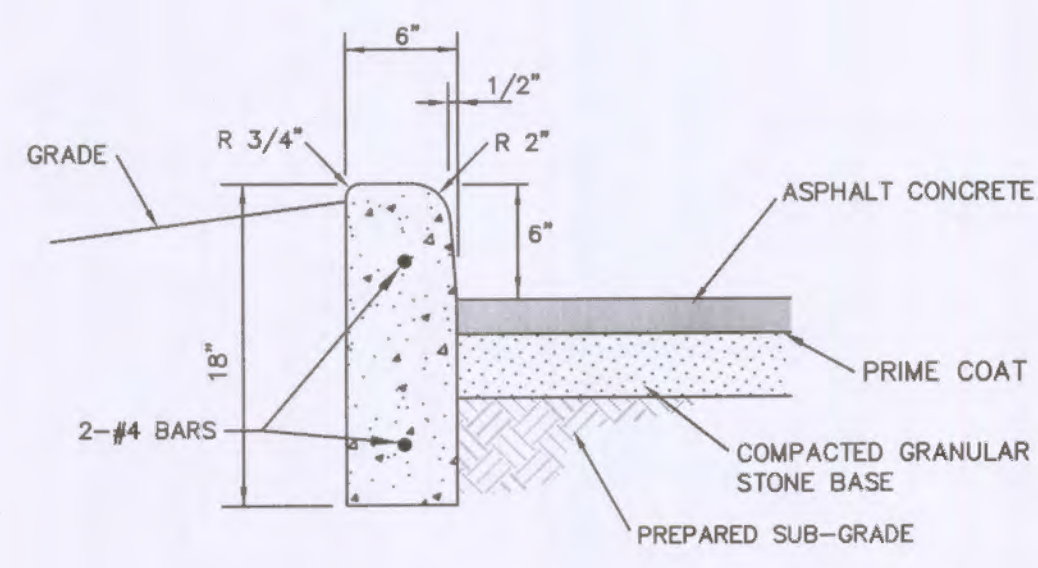


**1 TYPICAL PARKING STALLS**  
C10 SCALE: N.T.S.



**3 CONCRETE SIDEWALK**  
C10 SCALE: N.T.S.  
NOTE: ALL SIDEWALK NOT ADJACENT TO PAVEMENT SHALL HAVE EDGES TOOLED TO A 1 INCH RADIUS. (SEE SECTION B-B)



- NOTES:
1. ALL CONCRETE SHALL BE MIN. FC.=3000 P.S.I.
  2. ALL CONSTRUCTION MATERIALS AND METHODS OF CONSTRUCTION SHALL BE IN ACCORDANCE WITH THE CITY OF O'FALLON
  3. ANY UNSUITABLE SOIL (AS DETERMINED BY SOILS ENGINEER) BELOW STRUCTURE SHALL BE REMOVED AND REPLACED WITH SELECT EARTHEN MATERIAL COMPACTED IN PLACE WITH VIBRATORY TAMPER.

**2 18" BARRIER CURB**  
C10 SCALE: N.T.S.

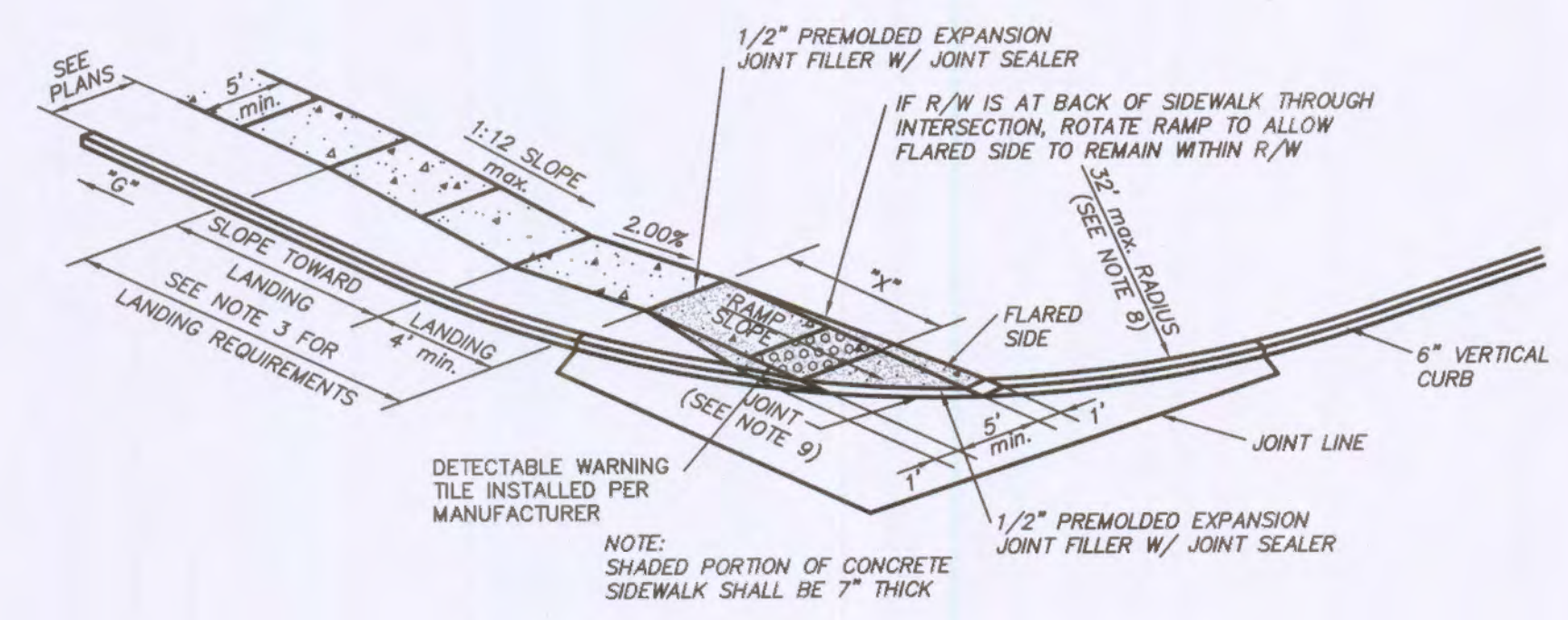
**4 INTEGRAL SIDEWALK & CURB**  
C10 ALL SIDEWALKS TO BE CONSTRUCTED TO THE CITY OF O'FALLON AND ADA STANDARDS  
NOTE: ALL SIDEWALK NOT ADJACENT TO PAVEMENT SHALL HAVE EDGES TOOLED TO A 1 INCH RADIUS.

**CURB RAMP NOTES**

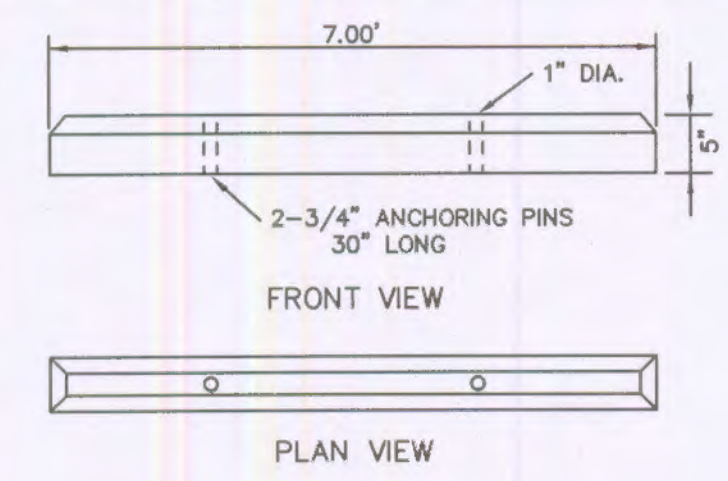
1. DO NOT SCALE DRAWING. FOLLOW DIMENSIONS.
2. SIDEWALKS AND SIDEWALK CURB RAMP SHALL BE CONSTRUCTED IN ACCORDANCE WITH THESE DETAILS AND THE CURRENT APPROVED "AMERICANS WITH DISABILITIES ACT ACCESSIBILITY GUIDELINES" (ADAAG).
3. PROVIDE A LANDING AT THE TOP OF EACH STRAIGHT RAMP WHEN THE GRADE ALONG CURB ("G") IS GREATER THAN +2% AND LESS THAN +7% FOR OTHER VALUES OF "G", INCLUDING ALL NEGATIVE (-) VALUES, NO LANDING IS REQUIRED.
4. MINIMUM SIDEWALK WIDTH ALONG 6" VERTICAL CURB SHALL BE 5 FEET. MINIMUM SIDEWALK WIDTH ALONG 3" ROLLED CURB SHALL BE 4 FEET.
5. MAXIMUM SIDEWALK CROSS SLOPE 0.02'/FT.
6. ALL SIDEWALK SECTIONS SHALL BE 4" THICK, EXCEPT WHERE INDICATED OTHERWISE BY SHADED PORTIONS SHOWN ON DETAILS. ALL SIDEWALK SECTIONS AND CURB RAMP, REGARDLESS OF THICKNESS, SHALL BE PAID FOR AS "CONCRETE SIDEWALK".
7. WHERE CURB RAMP MEETS PAVEMENT, BULLNOSE WILL NOT BE PERMITTED.
8. CONSTRUCT A DIAGONAL RAMP WHEN THE MAXIMUM CORNER RADIUS ALLOWED FOR A STRAIGHT RAMP IS EXCEEDED.
9. IF INTEGRAL CONCRETE CURB IS CONSTRUCTED, STRIKE A DUMMY JOINT ACROSS BOTTOM OF RAMP AT CURB LINE. IF CONCRETE CURB IS DOWELED-ON, BLOCK OUT PAVEMENT TO PROVIDE FULL DEPTH CURB ACROSS RAMP FROM OUTER POINT OF CURB TAPER TO OUTER POINT OF CURB TAPER.
10. FOR SIDEWALK LOCATIONS ON CUL-DE-SACS, REFER TO "PAVEMENT CONSTRUCTION DETAILS".
11. FOR PAVEMENT LONGITUDINAL AND TRANSVERSE JOINTS AND DOWEL AND THE BAR REQUIREMENTS AND DIMENSIONS, REFER TO THE PAVEMENT CONSTRUCTION DETAILS FOR "JOINTS AND CURBS", STANDARD DRAWING C502.03.
12. FOR ROADWAY CROSS SLOPES, PAVEMENT TYPES, AND THICKNESSES, REFER TO "STANDARD TYPICAL SECTION".
13. A DETECTABLE WARNING CONSISTING OF TRUNCATED DOMES SHALL BE PLACED AT EACH CURB RAMP. IF CURB CUTS ARE USED TO ALLOW A CROSSWALK TO PASS THROUGH AN ISLAND THEN DETECTABLE WARNINGS SHALL BE PLACED AT EACH EXIT POINT FROM THE ISLAND.
14. THE DETECTABLE WARNING SHALL BE A PRE-MOLDED TILE CAST DIRECTLY INTO THE PLASTIC CONCRETE.
15. THE WARNING SURFACE SHALL CONTRAST VISUALLY WITH ADJOINING SURFACES, EITHER LIGHT ON DARK, OR DARK ON LIGHT.
16. THE DETECTABLE WARNING SHALL BE PLACED WITHIN 6 TO 8 INCHES OF THE CURB LINE.
17. THE DETECTABLE WARNING SHALL EXTEND 24 INCHES IN THE DIRECTION OF TRAVEL AND THE FULL WIDTH OF THE RAMP, LANDING, OR BLENDED TRANSITION.
18. TRANSITIONS FROM RAMPS TO WALKS, GUTTERS, OR STREETS SHALL BE FLUSH AND FREE OF ABRUPT CHANGES.

"G" GRADE ALONG CURB (%)	"X" MIN. LENGTH OF RAMP SLOPE (L.F.)
NEGATIVE (-) VALUES	6
0 TO +1	7
+1.01 TO +2	8
+2.01 TO +3	10
+3.01 TO +4	12
GREATER THAN +4	15

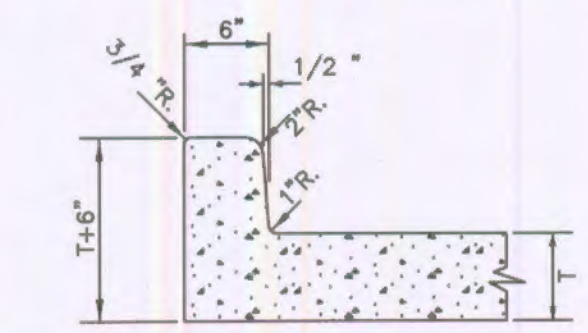
NOTE: POSITIVE (+) "G"- PROCEEDING AWAY FROM INTERSECTION AND UP A GRADE.  
NEGATIVE (-) "G"- PROCEEDING AWAY FROM INTERSECTION AND DOWN A GRADE.



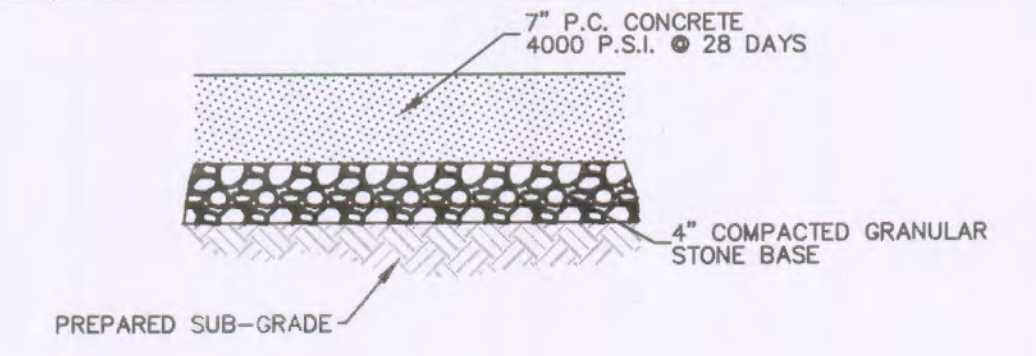
**7 CURB RAMP**  
C10



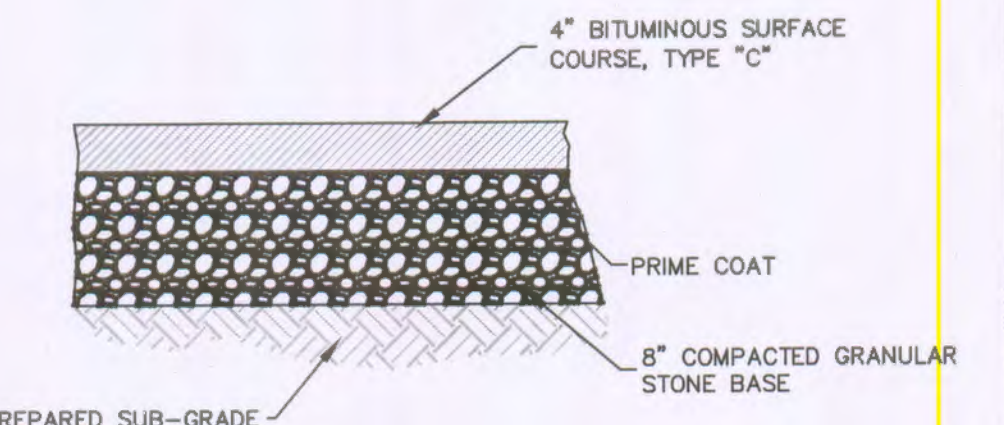
**11 PRE-CAST PARKING BUMPER**  
C10



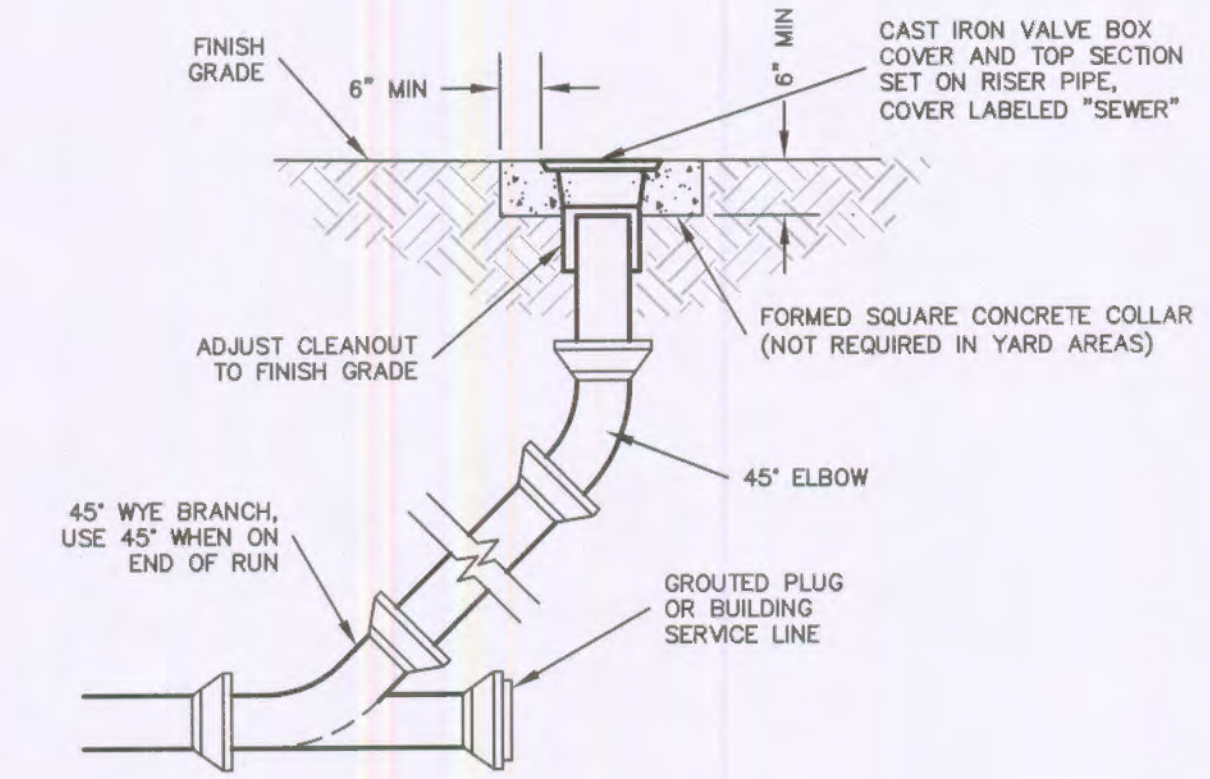
**12 INTEGRAL VERTICAL CURB**  
C10



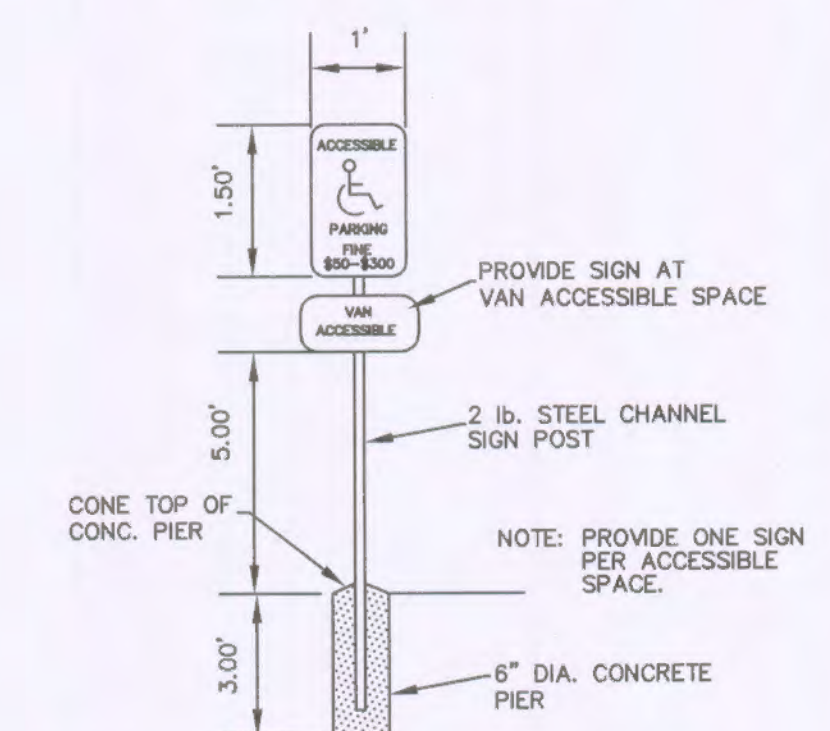
**5 CONCRETE PAVEMENT**  
C10 DUMPSTER  
NOTE: THE GRANULAR STONE BASE SHALL BE COMPACTED TO 100% MAXIMUM DENSITY PER STANDARD PROCTOR TEST.



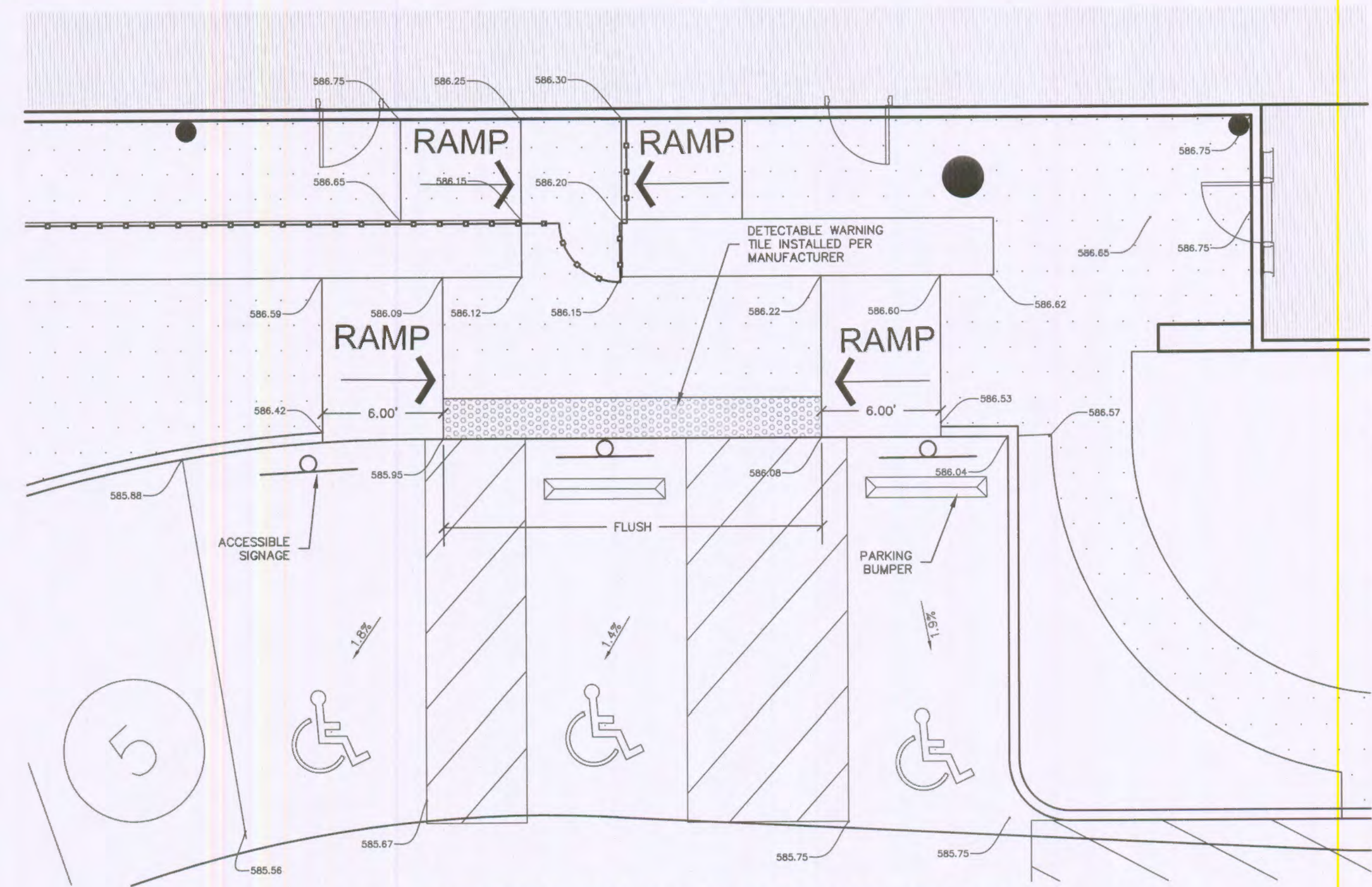
**6 ASPHALT PAVEMENT**  
C10  
NOTE: THE ASPHALT SURFACE SHALL BE COMPACTED TO 98% MAXIMUM DENSITY.  
NOTE: THE GRANULAR STONE BASE SHALL BE COMPACTED TO 100% MAXIMUM DENSITY PER STANDARD PROCTOR TEST.



**10 SEWER CLEANOUT**  
C10



**9 ACCESSIBLE PARKING SIGN**  
C10



**8 ACCESSIBLE PARKING DETAIL**  
C10 SCALE: N.T.S.  
NOTES: ALL PARKING SPACE PAINT IS TO BE WHITE EXCEPT FOR THE ACCESSIBLE SPACES WHICH ARE TO BE BLUE.

PREPARED FOR:  
**EVERGREEN**  
CONTACT: ALEX GONZALEZ  
2390 EAST CAMELBACK RD  
SUITE 410  
PHOENIX, AZ 85016

PROJECT TITLE  
**PRIMROSE SCHOOL  
OF O'FALLON AT  
WINGHAVEN**  
778 WINGHAVEN BLVD,  
O'FALLON, MISSOURI

**GRIMES CONSULTING, INC.**  
Civil Engineering & Surveying Services  
12309 OLD TESSON ROAD  
SUITE 3000  
ST. LOUIS, MO 63128  
PH: (314) 848-6100  
FAX: (314) 848-6100  
WWW.GRIMESCONSULTING.COM  
CONTACT: LENNY MEERS  
EMAIL: lennym@grimesconsulting.com



Developer / Owner Information  
**EVERGREEN**  
2390 E CAMELBACK RD, PHOENIX, ARIZONA  
Primary Contact: ALEX GONZALEZ  
Phone: (602) 808-8600  
24 Hr. Emergency Contact: ALEX GONZALEZ  
Phone: (602) 808-8600  
Fax: (602) 867-7101  
Email: agonzalez@evergreen.com

P+Z No. 9831.54.03  
City No. TBD

Page No. **C10**  
GC# 1482D

J:\1482D\CAD\1482D\_Plan.dwg 02/20/2014 1:19 PM\lenn Numbergr