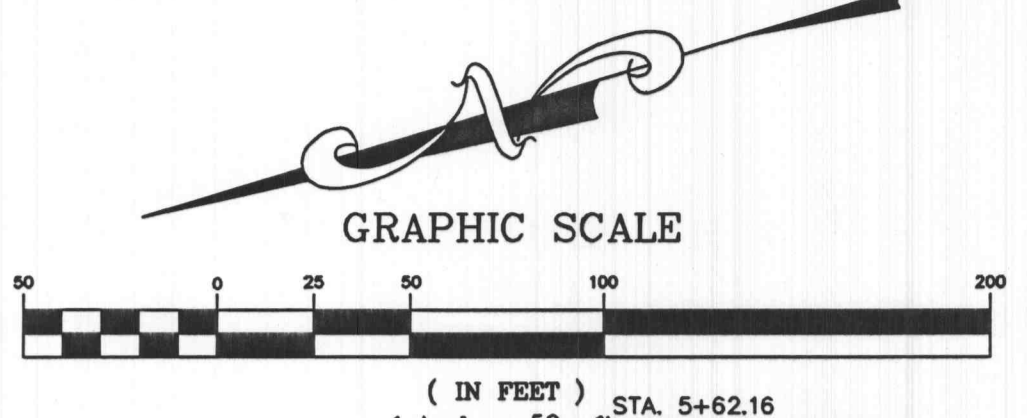


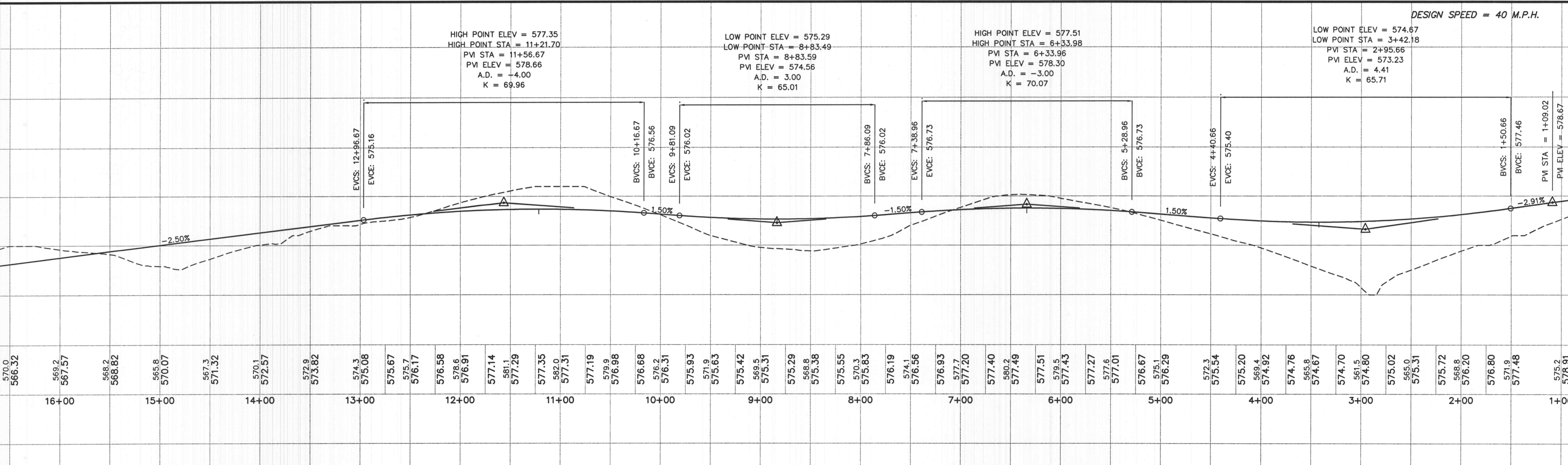
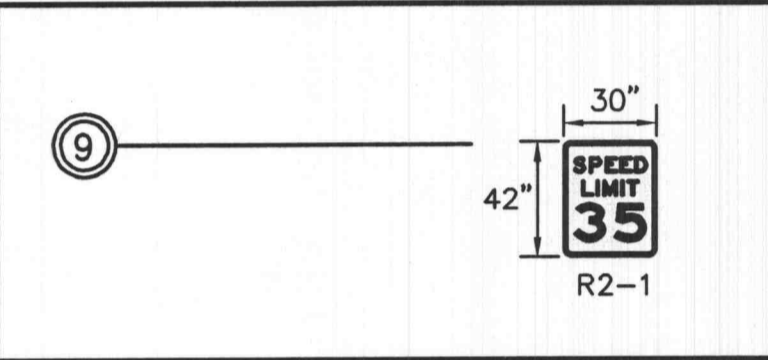
- GENERAL NOTES:**
- 1.) PROPOSED ENTRANCE TIE-IN AND DECELERATION LANE CONSTRUCTION ALONG HIGHWAY 40 TO BE COORDINATED WITH TIMING AND CONSTRUCTION OF MODOT PROJECT J6P0672E (REFER TO SHTS. C11 & C24 FOR MORE DETAIL).
  - 2.) REFER TO SHEET C04, "HIGHWAY 40 DECELERATION LANE" FOR ENTRANCE GEOMETRICS AND WARPING.
  - 3.) REFER TO SHEET C22, "ROUND-ABOUT WARPING AT PROGRESS POINT PKWY", FOR MORE DETAIL AT ROUND-ABOUT.



LOT C  
 (FUTURE DEVELOPMENT  
 SANITARY SEWERS)

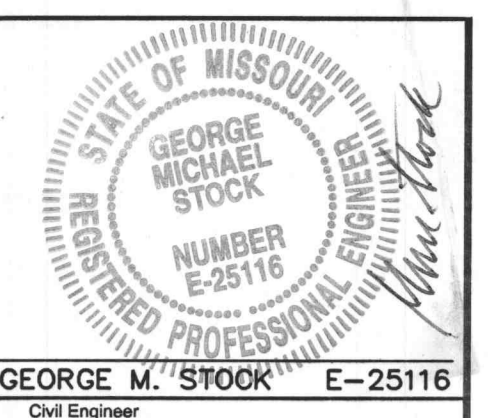
LOT D  
 (FUTURE DEVELOPMENT  
 SANITARY SEWERS)

**SIGN LEGEND**



**CENTERLINE PROGRESS POINT PARKWAY**

SCALE:  
 HORIZONTAL: 1"=50'  
 VERTICAL: 1"=10'



**STOCK & ASSOCIATES CONSULTING ENGINEERS, INC.**  
 425 NORTH NEW BALLAS ROAD  
 SUITE 165  
 ST. LOUIS, MO. 63141  
 PH. (314) 432-8100  
 FAX (314) 432-8171  
 e-mail: general@stockassoc.com

Architect  
 Structural Engineer  
 Fire Protection Engineer  
 Plumbing Engineer  
 Mechanical Engineer  
 Electrical Engineer

**CLAYCO**  
 CLAYCO CONSTRUCTION COMPANY  
 2199 Innerbelt Business Center Dr.  
 St. Louis, MO 63114  
 Ph 314.429.5100 Fax 314.429.3165

**TRISTAR BUSINESS COMMUNITIES**  
 TRISTAR BUSINESS COMMUNITIES  
 13397 Lakefront Drive  
 St. Louis, MO. 63045  
 Ph 314.291.0814

**Progress Point**  
 O'Fallon, MO

Rev.	Description	Date
1	ISSUED	11-05-01
2	CITY & DUCKETT CREEK	12-28-01
3	CITY & DUCKETT CREEK	02-08-02
4	CITY & DUCKETT CREEK	03-18-02
5	CITY COMMENTS	04-18-02
6	CITY COMMENTS	04-28-02
7	REV. CONSTR. SEQUENCE	05-22-02
8	CITY COMMENTS	07-10-02
9	FIELD COORD.	07-23-02
10	NEW LIGHTING PLAN	08-02-02

The Professional Engineer's seal affixed to this sheet indicates that the named Engineer has prepared or directed the preparation of the material shown only on this sheet. Other drawings and documents not exhibiting this seal shall not be considered prepared by or the responsibility of the undersigned.

Drawing Title  
**PROGRESS POINT PKWY PLAN AND PROFILE**

Drawing No.  
**C6**

Scale  
 1"=50'

Dwg By: PKB  
 Check By: GMS  
 Date: 1-10-03  
 Project No.: 200-2180.2

F:\Draw\20K\Draw\2100\2002\B01\PLANS\C06-PROG.dwg Tue Nov 19 08:30:08 2002 Jnrath Stock & Assoc.