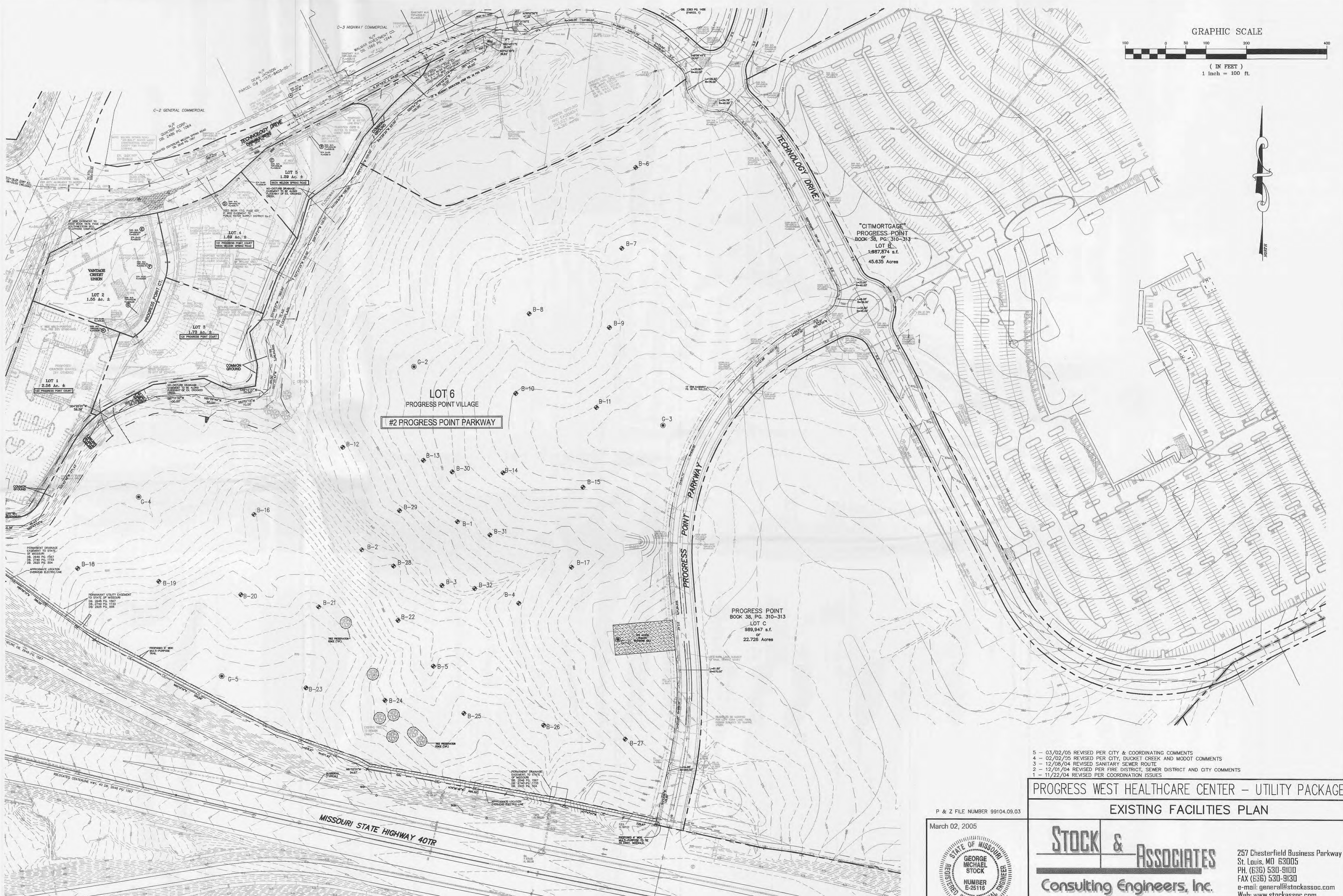
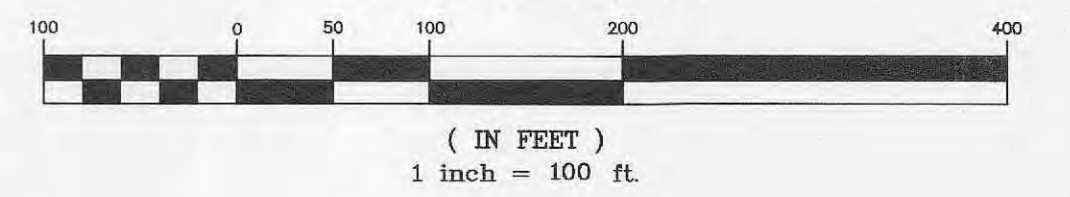


GRAPHIC SCALE



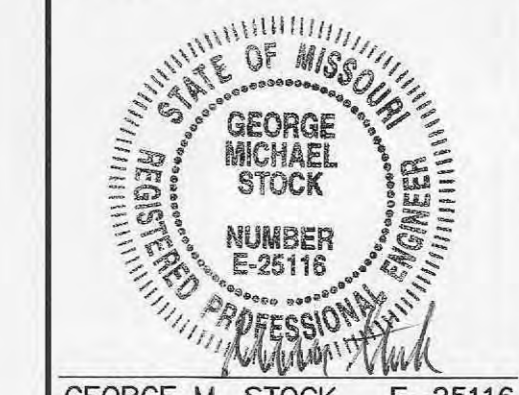
- 5 - 03/02/05 REVISED PER CITY & COORDINATING COMMENTS
- 4 - 02/02/05 REVISED PER CITY, DUCKET CREEK AND MODOT COMMENTS
- 3 - 12/08/04 REVISED SANITARY SEWER ROUTE
- 2 - 12/01/04 REVISED PER FIRE DISTRICT, SEWER DISTRICT AND CITY COMMENTS
- 1 - 11/22/04 REVISED PER COORDINATION ISSUES

PROGRESS WEST HEALTHCARE CENTER - UTILITY PACKAGE

EXISTING FACILITIES PLAN

P & Z FILE NUMBER 99104.09.03

March 02, 2005



Stock & Associates
Consulting Engineers, Inc.

257 Chesterfield Business Parkway
 St. Louis, MO 63005
 PH. (636) 530-9100
 FAX (636) 530-9130
 e-mail: general@stockassoc.com
 Web: www.stockassoc.com

DRAWN BY: J.E.F.	DATE: 10/21/04	CHECKED BY: G.M.S.	DATE: 10/21/04	JOB NUMBER: 204-3224	SHEET: C3 of 22
---------------------	-------------------	-----------------------	-------------------	-------------------------	--------------------

C:\DRAWING\2005\03\224\1-Utility Package\CD3-Existing Conditions.dwg, 3/2/2005 9:45:57 AM, kb 6564.rvt