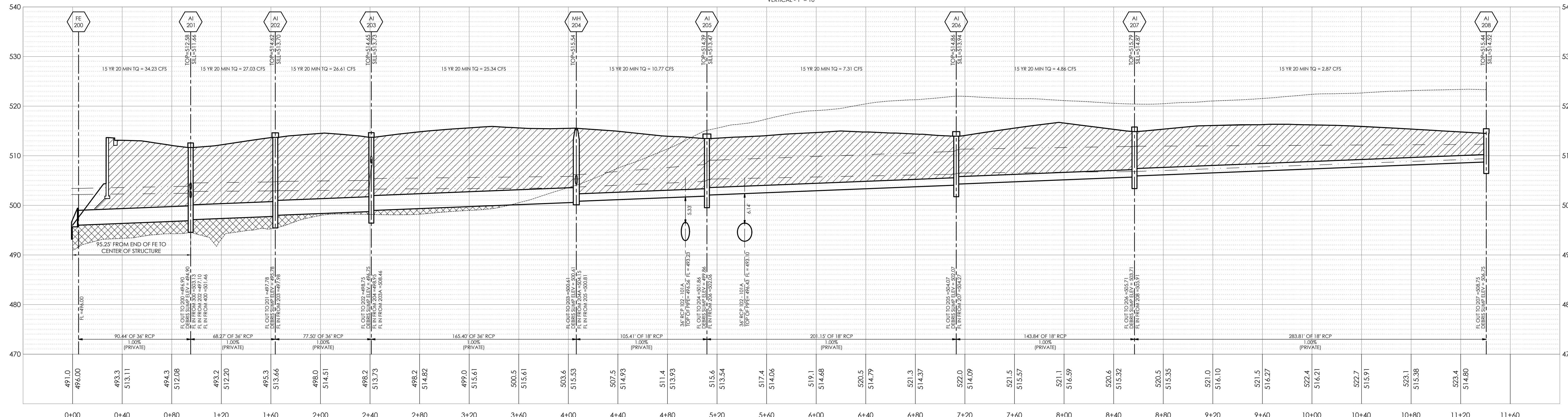


OWNER
CITY OF FALLON
100 NORTH MAIN STREET
FALLON, MO 63366
836.379.5590

PROJECT TEAM
CIVIL ENGINEER
PREMIER DESIGN GROUP
100 MIDLAND PARK DRIVE
WENTZVILLE, MO 63385
314.925.7444
MAINTENANCE CONSULTANT
HDR ENGINEERING, INC.
17725 KATY FREEWAY SUITE 102
HOUSTON, TX 77094
816.980.2700
STRUCTURAL ENGINEER
METTMAYER ENGINEERING
2225 W CHESTERFIELD BLVD., SUITE 300
SPRINGFIELD, MO 65807
417.890.8002
MEP ENGINEER
HENDERSON ENGINEERS, INC.
8345 LENEXA DR., #300
LENEXA, KS 66214
913.742.5000

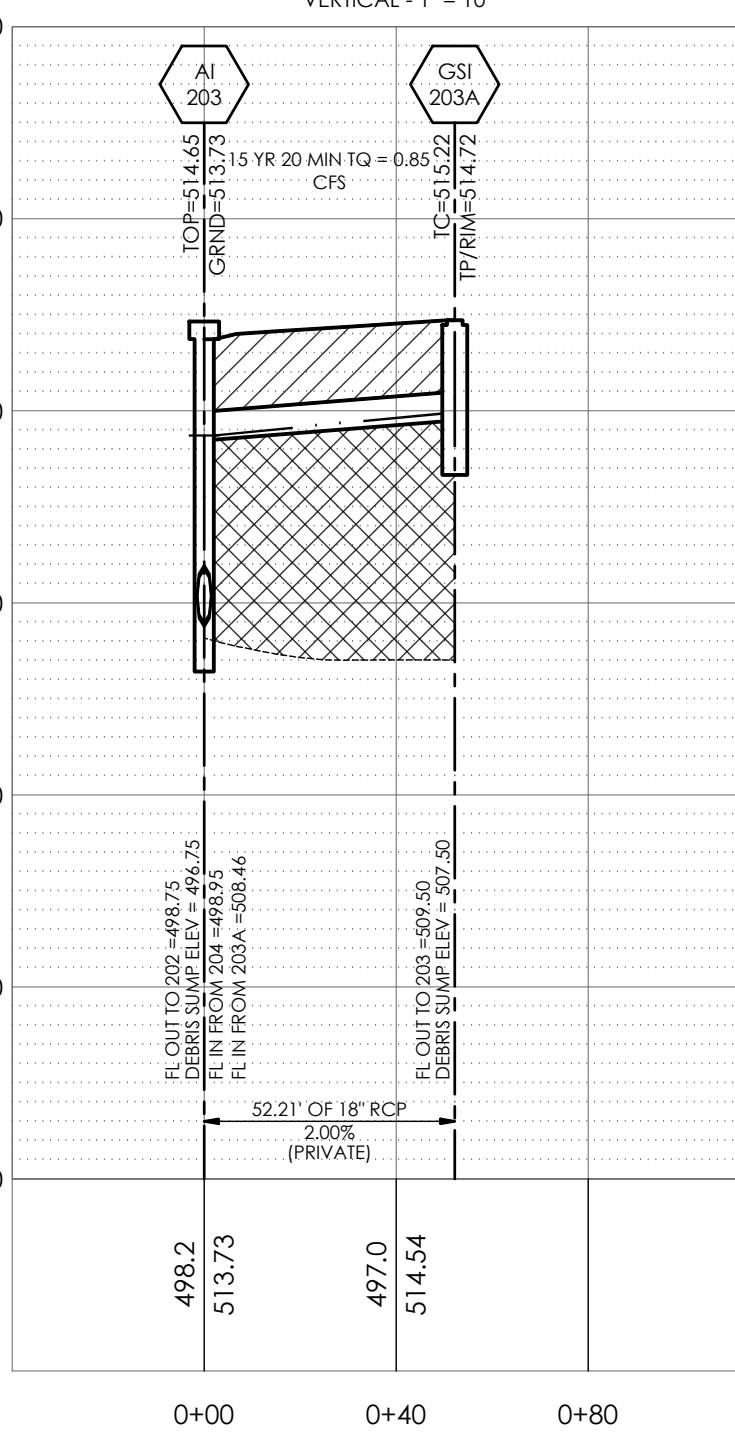
208-200 STORM SEWER PROFILE

HORIZONTAL - 1" = 40'
VERTICAL - 1" = 10'



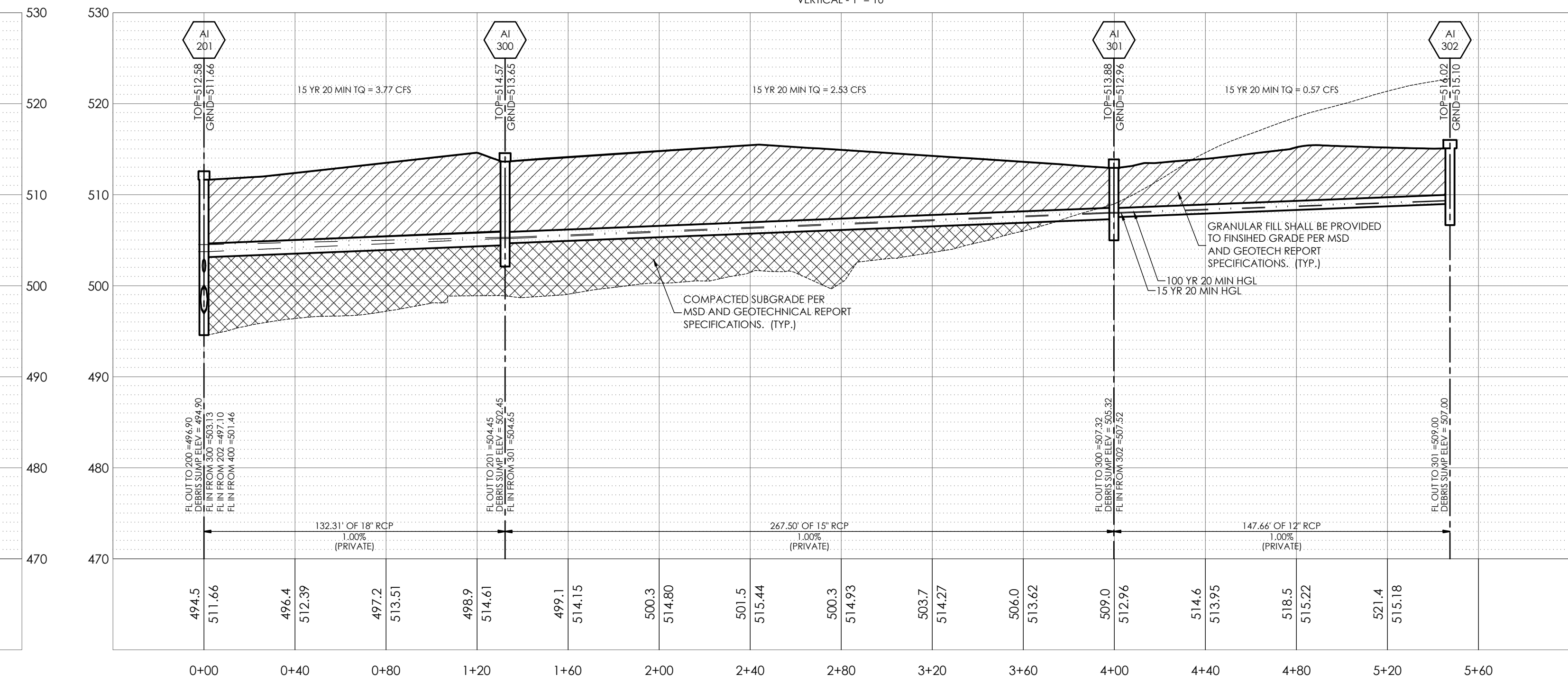
203A-203 STORM SEWER PROFILE

HORIZONTAL - 1" = 40'
VERTICAL - 1" = 10'



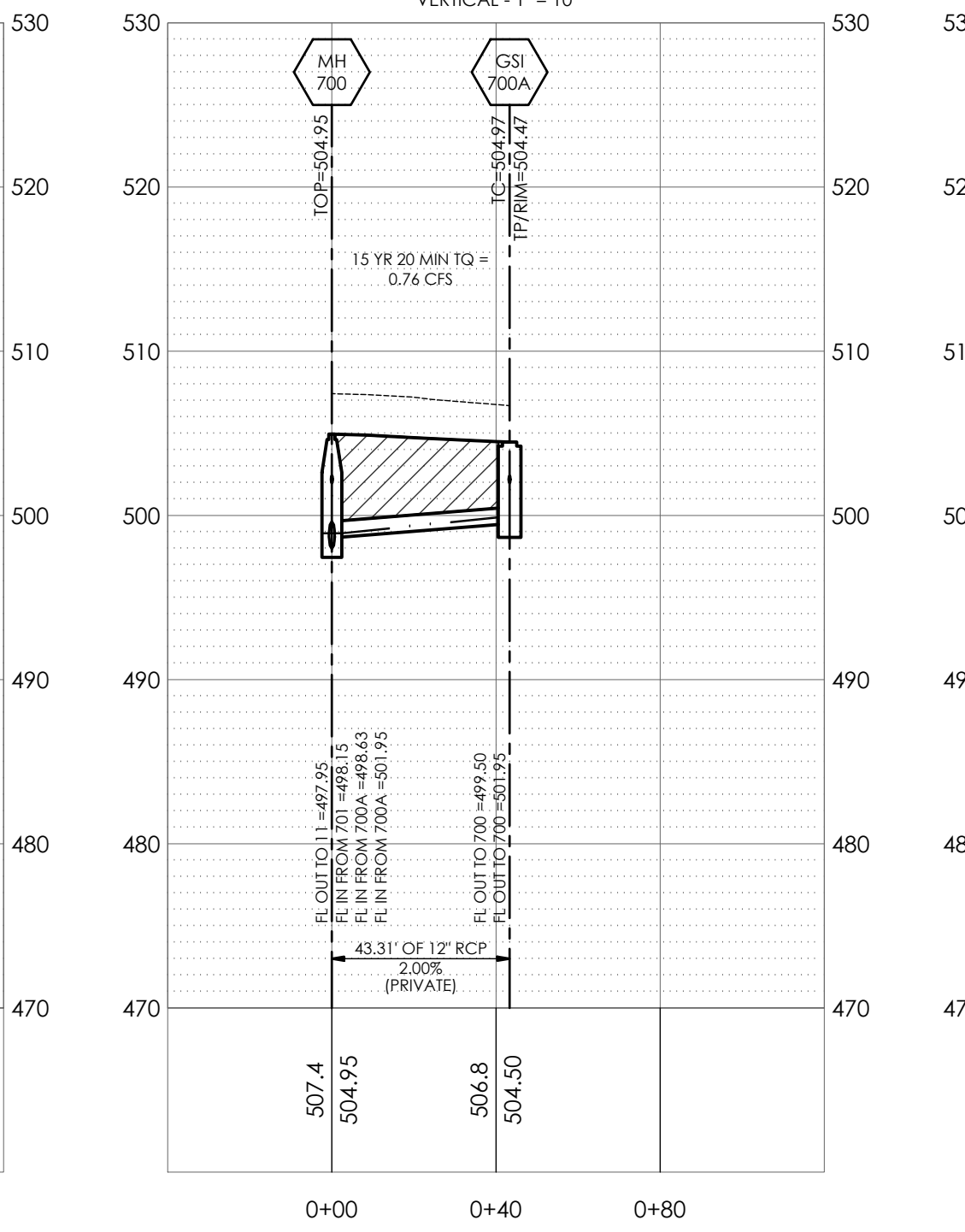
302-201 STORM SEWER PROFILE

HORIZONTAL - 1" = 40'
VERTICAL - 1" = 10'



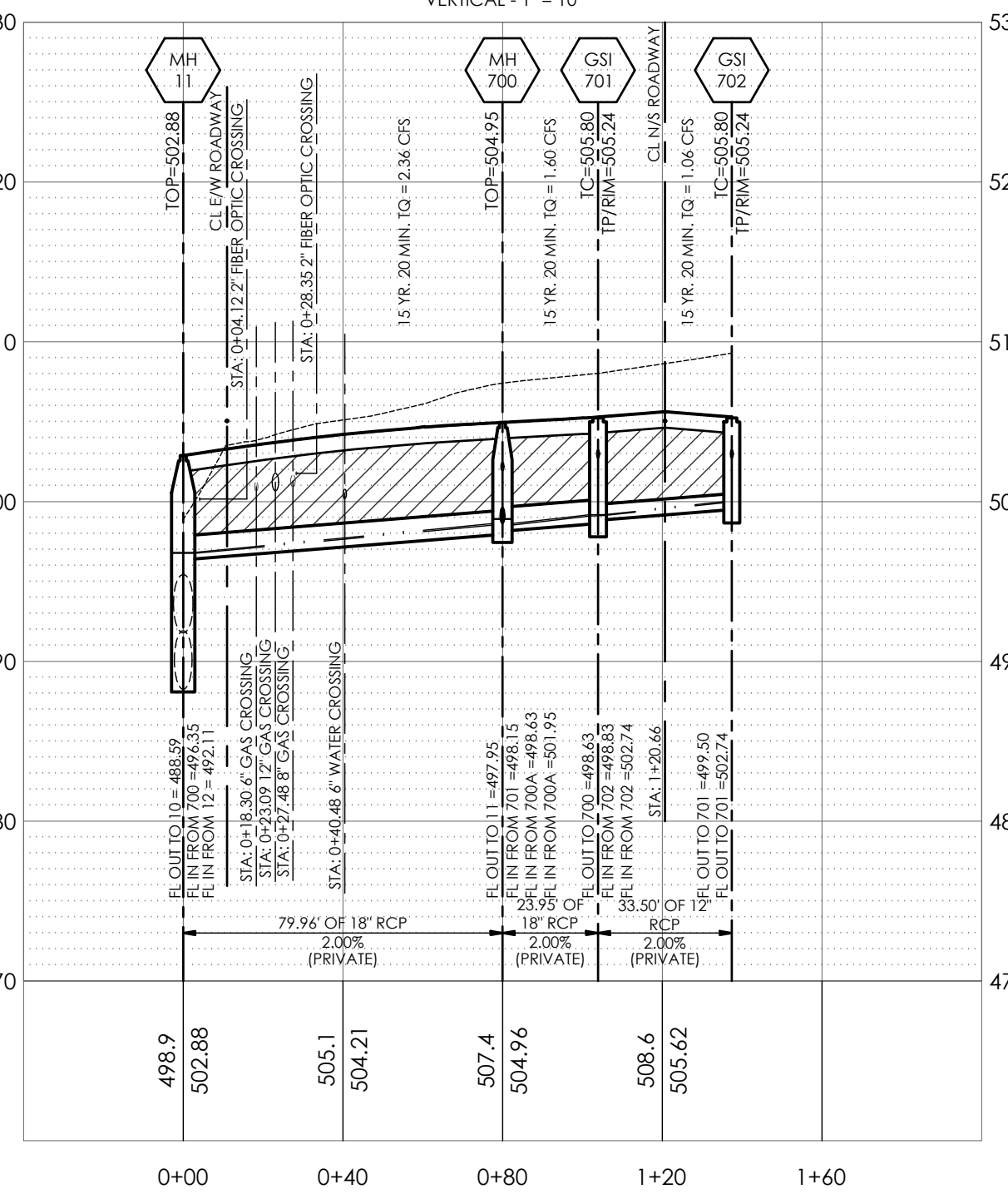
700A-700 STORM SEWER PROFILE

HORIZONTAL - 1" = 40'
VERTICAL - 1" = 10'



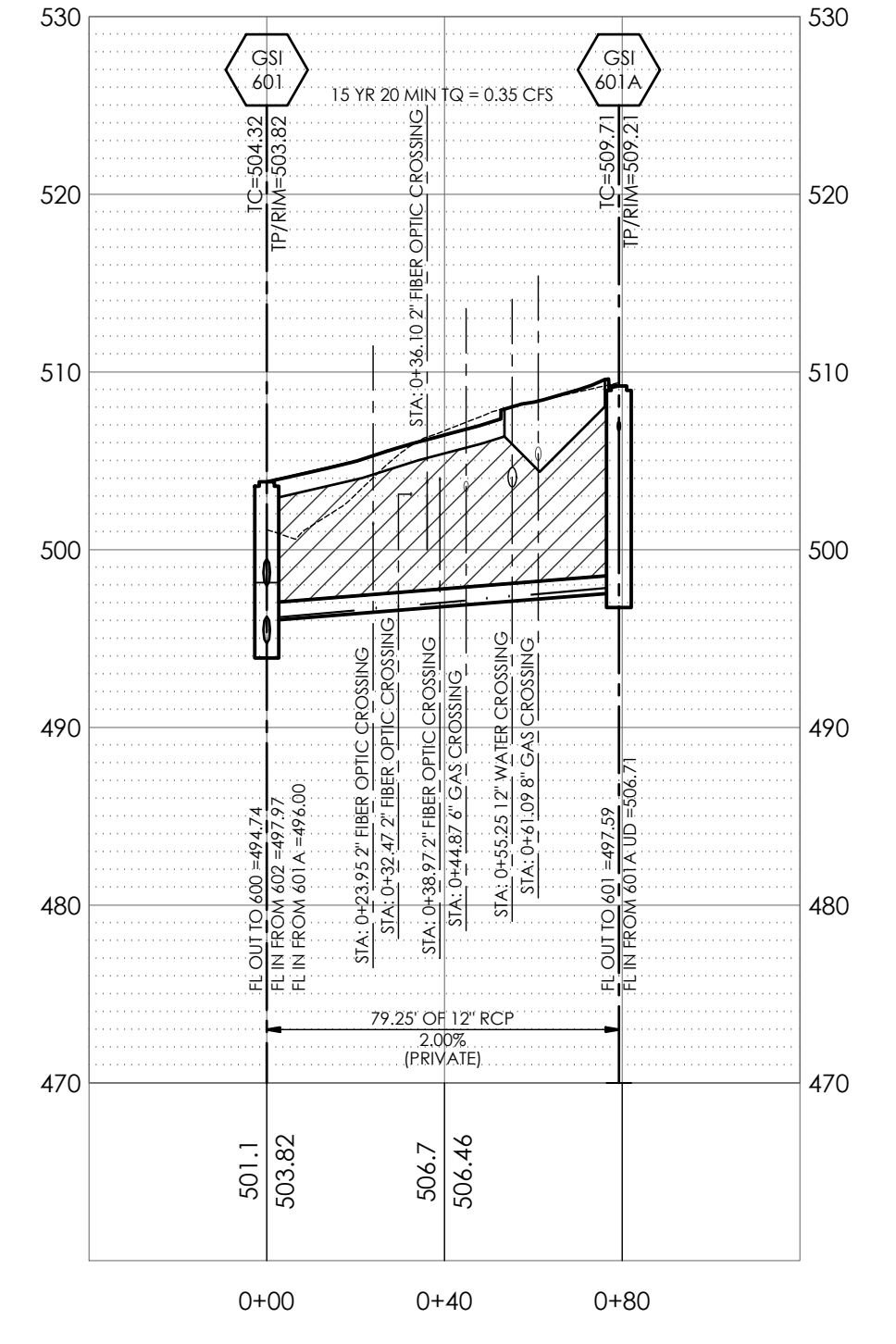
11-702 STORM SEWER PROFILE

HORIZONTAL - 1" = 40'
VERTICAL - 1" = 10'



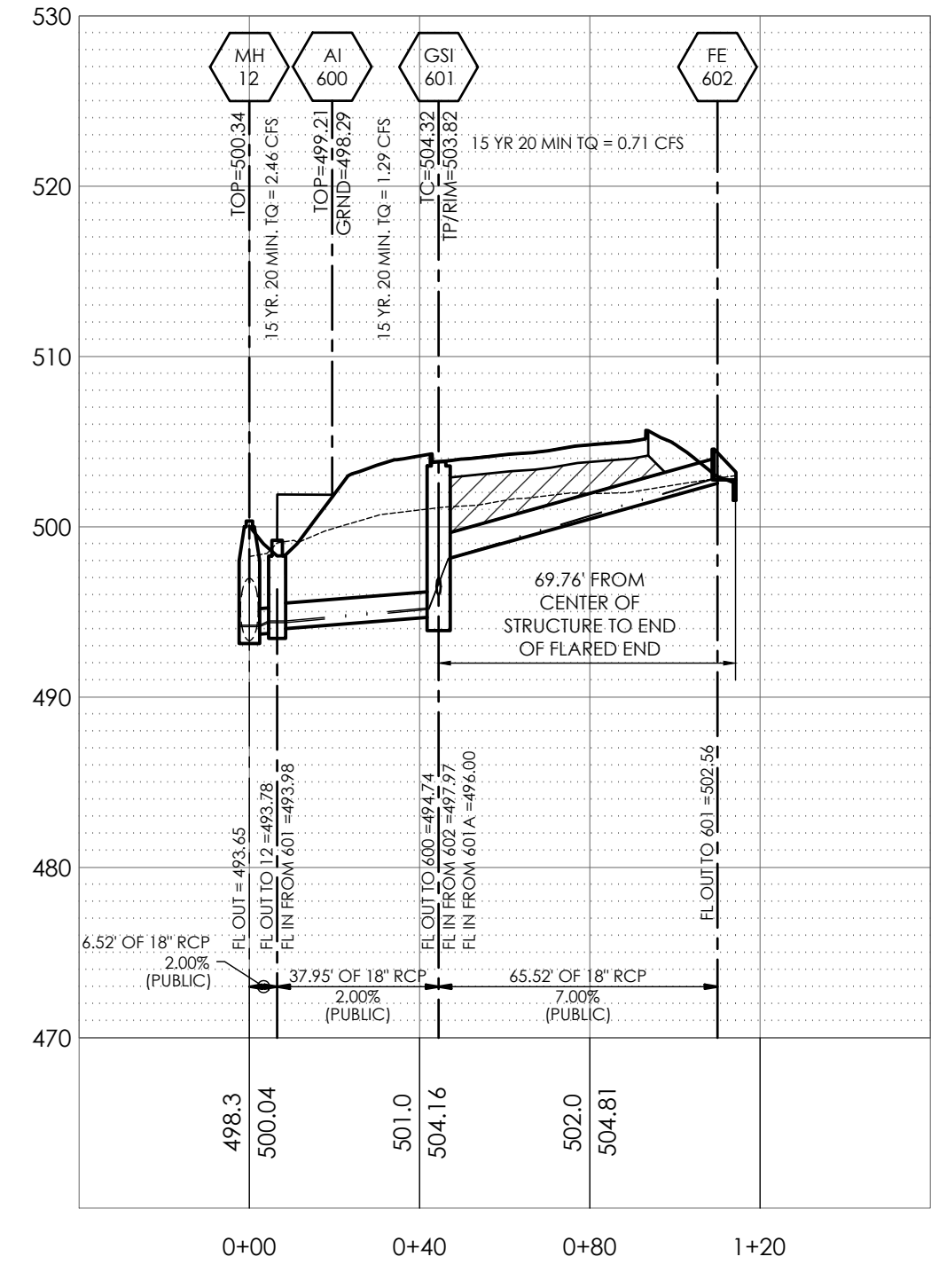
601A-601 STORM SEWER PROFILE

HORIZONTAL - 1" = 40'
VERTICAL - 1" = 10'



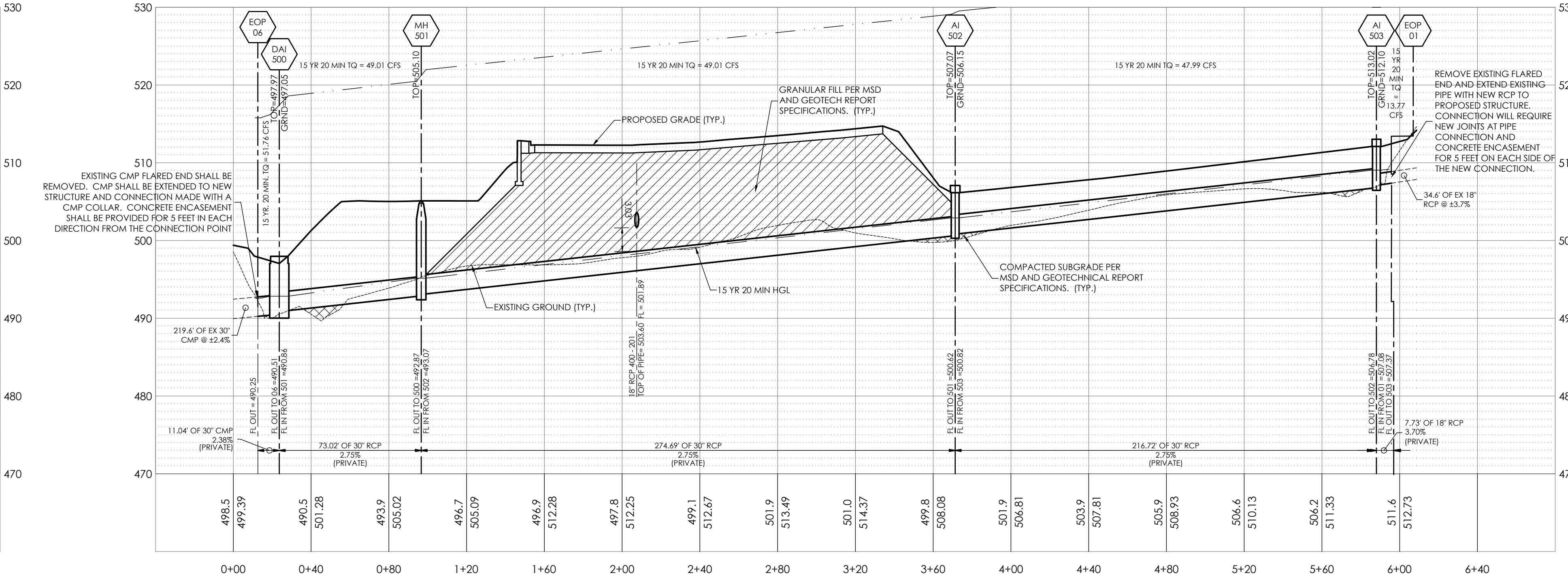
602-12 STORM SEWER PROFILE

HORIZONTAL - 1" = 40'
VERTICAL - 1" = 10'



01-06 STORM SEWER PROFILE

HORIZONTAL - 1" = 40'
VERTICAL - 1" = 10'

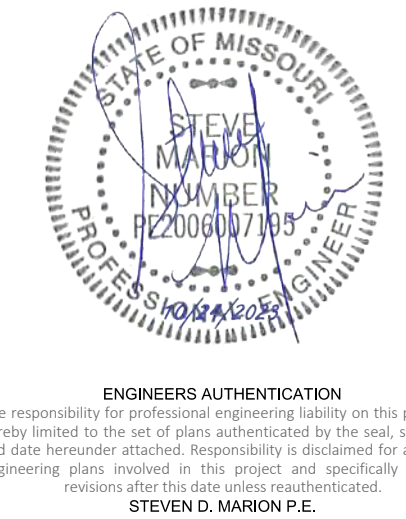


REVISIONS

| NO. | DESCRIPTION | DATE |
|-----|--------------|-----------|
| 1 | ADDENDUM #01 | 10/5/2023 |

PROJECT NO: 2207920 DRAWN BY: A. JONES
DATE: 9-15-2023 REVIEWED BY: M. FOGARTY

PROFESSIONAL SEAL



PROJECT TITLE
O'FALLON PUBLIC WORKS FACILITY

PROJECT ADDRESS:
1101 OLD E TERRA LANE
O'FALLON, MO 63366

STORM SEWER PROFILES

C-500

PERMIT SET

UNDERGROUND UTILITIES AND OSHA SAFETY NOTE:
Underground utilities and structures have been plotted from available information and therefore, their location must be considered approximate only. It is the responsibility of the individual contractor to notify the utility companies before actual construction. All OSHA rules and regulations established for the type of construction required by these plans shall be strictly followed (ie. trenching, blasting, etc.)

