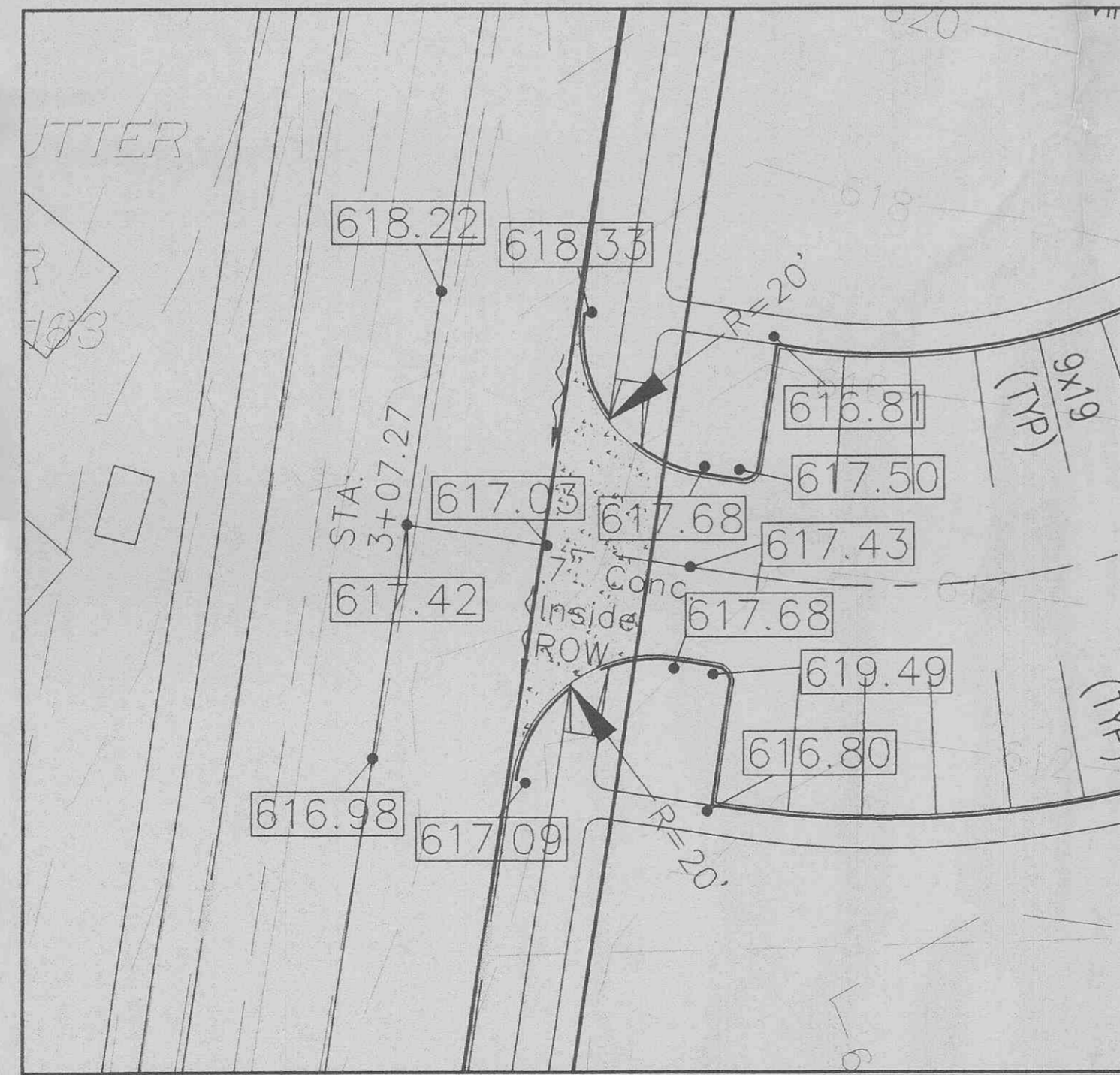


Cul-de-sac Warping
SCALE: 1" = 20'

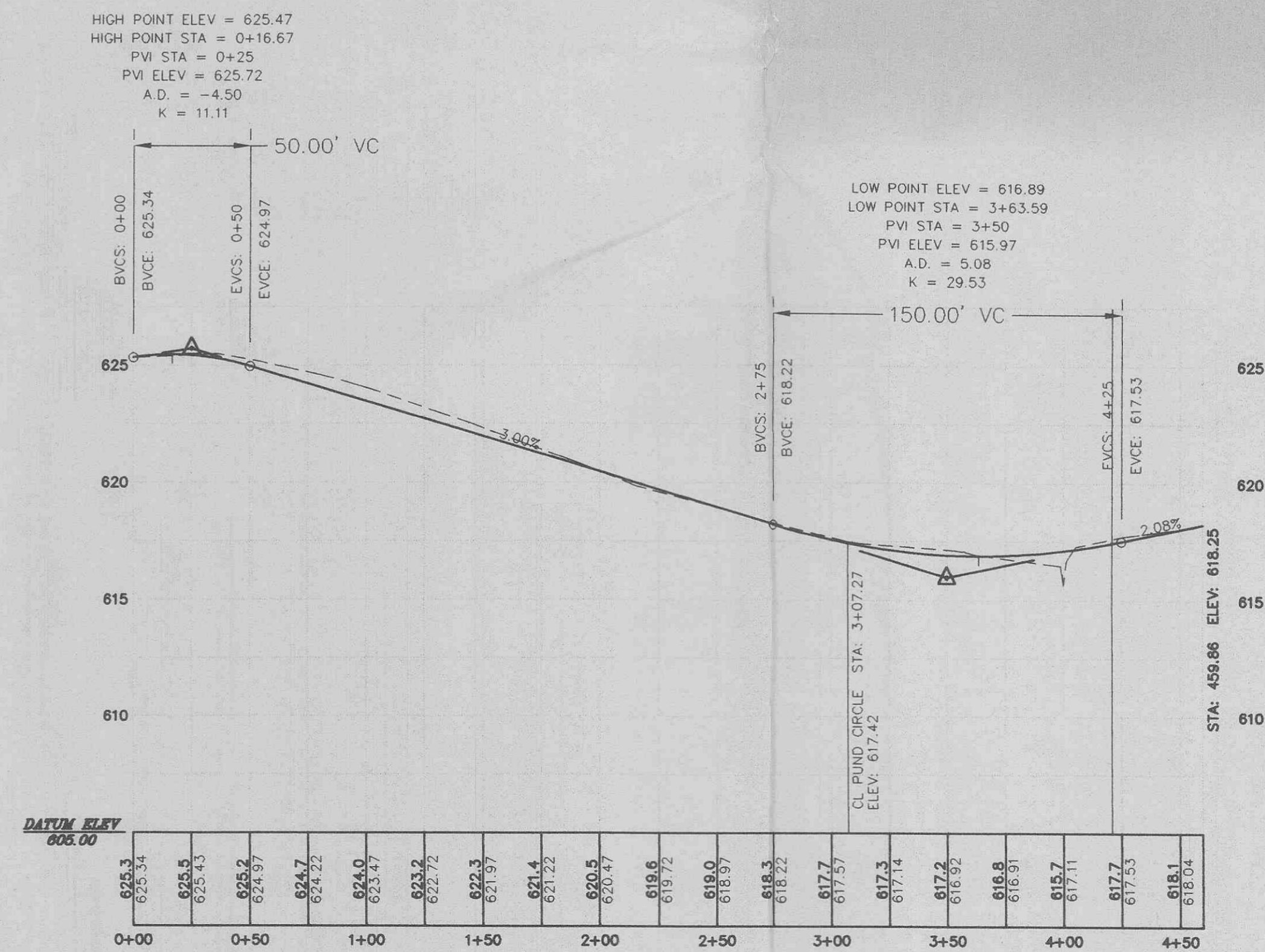
All Elevations are to Top Back of Curb



Entrance Detail
SCALE: 1" = 20'

All Elevations are to Top Back of Curb

1" = 10' VERT.
1" = 50' HORIZ.
SCALE:



07/11/01
06/03/01
06/23/01
06/28/01

**PUND PLACE
STREET PROFILE**

S C E S
ST. CHARLES ENGINEERING & SURVEYING, INC.
801 S. FIFTH STREET, SUITE 202
ST. CHARLES, MO 63301
TEL: (636) 947-0807 FAX: (636) 947-2448



ORDER NO.
20-0169-01
DATE
05/10/01
C-5