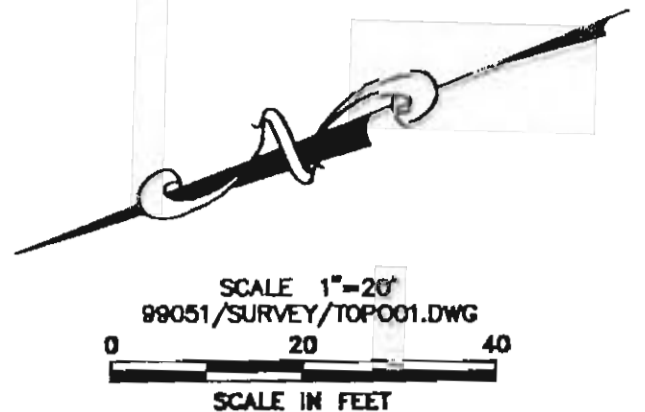


LEGEND	
TC	Top of Curb
FL	Flowline
CL	Centerline
A	Asphalt
C	Concrete
P	Pavement
B	Building Corner
TS	Top of Slope
TS	Top of Slope
F	Fence
UP	Utility Pole
UP/TL	UP with Transformer
OE	Overhead Elect.
UG	Underground Elect.
TJ	Telephone Junction Box
UT	Underground Telephone
UFO	Underground Fiber Optic
WV	Water Valve
WM	Water Meter
WMS	Water Main/Size
WC	Water Co. Manhole
GM	Gas Meter
GMS	Gas Main/Size
GMH	Gas Manhole
CB	Catch Basin
CS	Grate Inlet
DCB	Double Catch Basin
GMH	Grated Manhole
RES	Flared End Section
CO	Clean Out
CP	Clay Pipe
PVC	Plastic Pipe
RCP	Rigid Pipe
MP	Metal Pipe

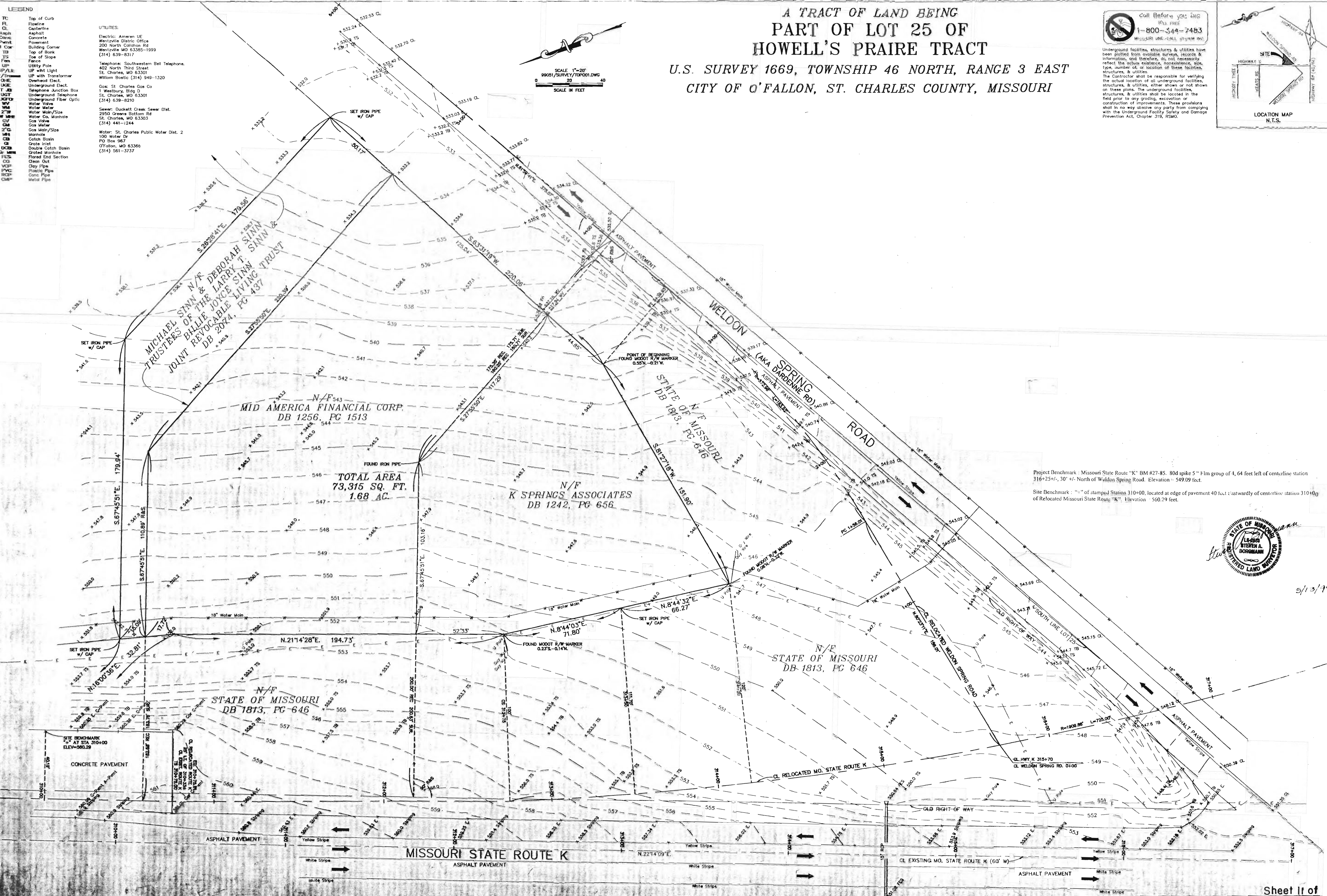
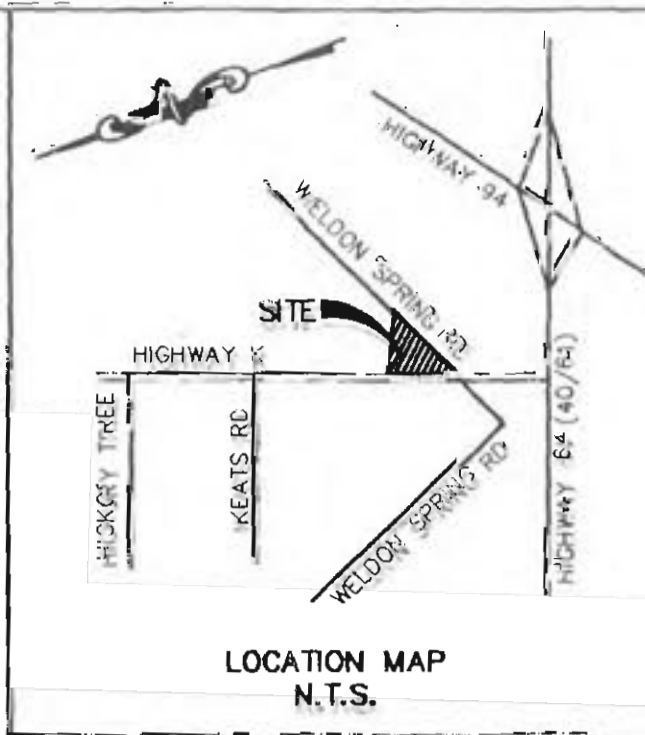
UTILITIES:
 Electric: Ameren UE
 Westville District Office
 200 North Colleton Rd
 Westville, MO 63385-1999
 (314) 639-8317
 Telephone: Southwestern Bell Telephone
 402 North Third Street
 St. Charles, MO 63301
 Willom Bostic (314) 949-1320
 Gas: St. Charles Gas Co
 1 Westbury, Bldg D
 St. Charles, MO 63301
 (314) 639-8210
 Sewer: Duckett Creek Sewer Dist.
 2950 Greens Bottom Rd
 St. Charles, MO 63303
 (314) 441-1244
 Water: St. Charles Public Water Dist. 2
 100 Water Dr
 PO Box 987
 O'Fallon, MO 63366
 (314) 561-3737



**A TRACT OF LAND BEING
 PART OF LOT 25 OF
 HOWELL'S PRAIRE TRACT
 U.S. SURVEY 1669, TOWNSHIP 46 NORTH, RANGE 3 EAST
 CITY OF O'FALLON, ST. CHARLES COUNTY, MISSOURI**

Call Before you Dig
 TOLL FREE
 1-800-344-7483
 MISSOURI ONE-CALL SYSTEM INC.

Underground facilities, structures & utilities have been plotted from available surveys, records & information, and therefore, do not necessarily reflect the actual existence, nonexistence, size, type, number of, or location of these facilities, structures & utilities.
 The Contractor shall be responsible for verifying the actual location of all underground facilities, structures, & utilities, either shown or not shown on these plans. The underground facilities, structures, & utilities shall be located in the field prior to any grading, excavation or construction of improvements. These provisions shall in no way absolve any party from complying with the Underground Facility Safety and Damage Prevention Act, Chapter 319, RSMo.



Project Benchmark - Missouri State Route "K" BM 627-85. 80d spike 5" 1/4m group of 4, 64 feet left of centerline station 316+25/-, 30' +/- North of Weldon Spring Road. Elevation - 549.09 feet.
 Site Benchmark - "1" of stamped Station 310+00, located at edge of pavement 40 feet eastwardly of centerline station 310+00 of Relocated Missouri State Route "K". Elevation - 560.29 feet.



5/13/99

Sheet 11 of
**TOPOGRAPHIC SURV
 QUIKTRIP #632**

Drawn by: HR
 Checked by: SAB
 Date: 3/3/99
 Job #: 99051