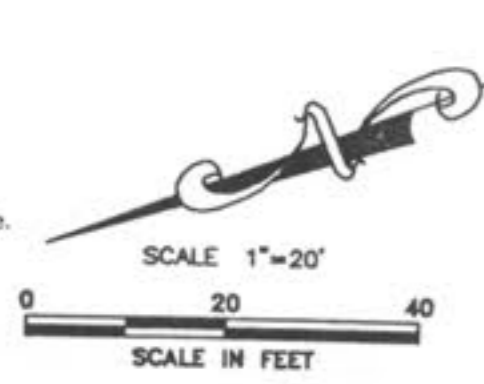
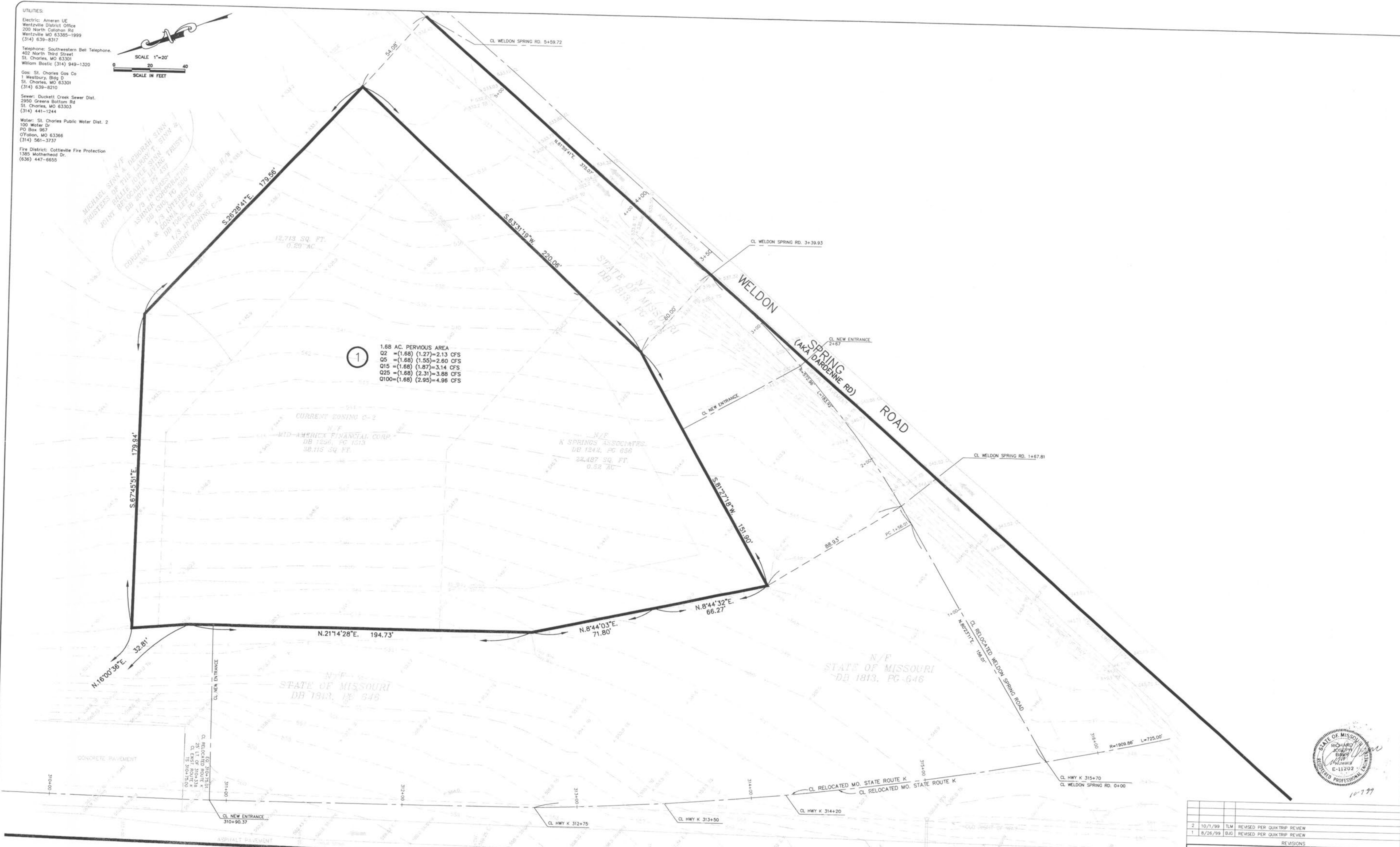


UTILITIES:  
 Electric: Ameren UE  
 Wentzville District Office  
 209 North Calmar Rd  
 Wentzville MO 63385-1999  
 (314) 639-8317  
 Telephone: Southwestern Bell Telephone  
 422 North Third Street  
 St. Charles, MO 63301  
 William Bostic (314) 949-1320  
 Gas: St. Charles Gas Co  
 1 Westbury Blvd D  
 St. Charles, MO 63301  
 (314) 639-8210  
 Sewer: Duckett Creek Sewer Dist.  
 2950 Greens Bottom Rd  
 St. Charles, MO 63303  
 (314) 441-1244  
 Water: St. Charles Public Water Dist. 2  
 100 Water Dr  
 PO Box 967  
 O'Fallon, MO 63366  
 (314) 561-3737  
 Fire District: Cottleville Fire Protection  
 1385 Motherhood Dr.  
 (636) 447-6655



N/F  
 MICHAEL STAN & DEBORAH STAN  
 PARTNERSHIP OF THE LARGE FIRM STAN &  
 BLAISE TOLE LARRY STAN &  
 FRUSTEER DB 2074, PG 44 457  
 JOHN REYNOLDS LIFTING TRUST  
 DB 1519, PG 80  
 1/3 INTEREST  
 ASHBERN CORPORATION  
 DB 1519, PG 80  
 1/3 INTEREST  
 DR. ROSE, PC 5F  
 1/3 INTEREST  
 CURTIS A. & DONNA LEFT GRANDDAUGHTER  
 TRUST  
 CURRENT ZONING C-2

1  
 1.68 AC. PERVIOUS AREA  
 Q2 = (1.68) (1.27) = 2.13 CFS  
 Q5 = (1.68) (1.55) = 2.60 CFS  
 Q15 = (1.68) (1.87) = 3.14 CFS  
 Q25 = (1.68) (2.31) = 3.88 CFS  
 Q100 = (1.68) (2.95) = 4.96 CFS



Call Before you DIG  
 TOLL FREE  
 1-800-344-7483  
 MISSOURI ONE-CALL SYSTEM INC.

Underground facilities, structures & utilities have been plotted from available surveys, records & information, and therefore, do not necessarily reflect the actual existence, nonexistence, size, type, number of, or location of these facilities, structures, & utilities.  
 The Contractor shall be responsible for verifying the actual location of all underground facilities, structures, & utilities, either shown or not shown on these plans. The underground facilities, structures, & utilities shall be located in the field prior to any grading, excavation or construction of improvements. These provisions shall in no way absolve any party from complying with the Underground Facility Safety and Damage Prevention Act, Chapter 319, RSMo.

REVISIONS	
2	10/1/99 TLM REVISED PER QUIKTRIP REVIEW
1	8/26/99 BJC REVISED PER QUIKTRIP REVIEW

**QT**  
 QUIKTRIP CORPORATION  
 2255 BLUESTONE DRIVE  
 ST. CHARLES, MO. 63303  
 PH # (314) 916-5706  
 FAX # (314) 916-5754

**QUIKTRIP #632  
 EXISTING DRAINAGE AREA MAP**

8711 WELDON SPRING RD. O'FALLON, MO. 63336

the clayton engineering company, inc.  
 ENGINEERS • SURVEYORS • PLANNERS  
 11800 WESTLINE INDUSTRIAL DRIVE  
 ST. LOUIS, MISSOURI 63146  
 (314) 802-8888 FAX: (314) 802-8888  
 EMAIL: CLAYTON@PRIMARY.NET

Designed: DJB  
 Drawn: HRL  
 Checked: EEK  
 Date: 8/16/99  
 Project Number: 99051  
 Sheet Number: 8 of 11