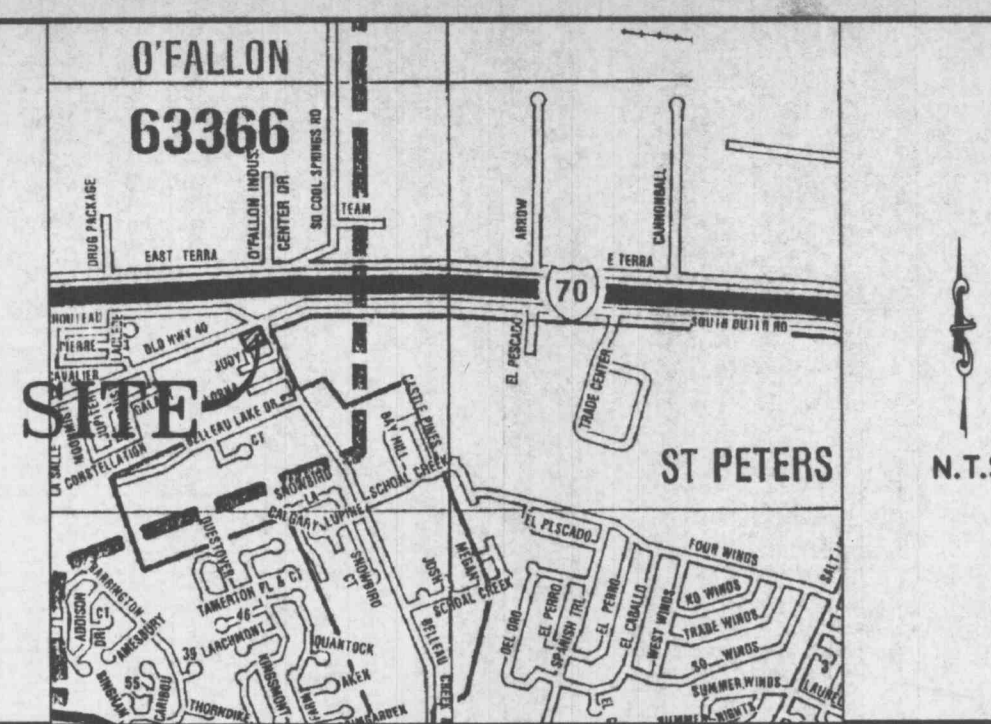


SCALE 1"=20'  
SCALE IN FEET



LOCATION MAP

ABBREVIATIONS		LEGEND	
ATC	Adjust To Grade	⊕	Area Light
BW	Back to Back	⊕	Area Light w/10v. Recs
CC	Bottom of Wall	⊕	Connection (Proposed)
CP	Centerline	⊕	Existing Contour
DB	Dead Book	⊕	Proposed Contour
EP	Edge of Pavement	⊕	Existing Elevation
FF	Finished Grade	⊕	Proposed Elevation
FL	Face to Face	⊕	Fire Hydrant
FL	Flow line	⊕	Concrete
HDCP	Handicap	⊕	Doorway Entrance
NTS	Not To Scale	⊕	Drainage Flow
DC	On Center	⊕	Drainage Flow
PL	Radius	⊕	Gas Meter Or Valve
PL	Flat Book	⊕	Gas Meter Or Valve
PL	Radius	⊕	Cable TV
R/W	Right of Way	⊕	Water Meter Or Valve
TR	Top of Bank	⊕	Underground Electric Service
TBR	To Be Removed	⊕	Telephone Service
TBR	To Be Removed & Replaced	⊕	Underground Tele. Service
TES	Top of Island	⊕	Water Service
TP	Top of Pavement	⊕	Exist. Sanitary Sewer
TS	Top of Slope	⊕	Exist. Storm Sewer
TW	Top of Wall	⊕	Proposed Sanitary Sewer
UP	Use in Place	⊕	Proposed Storm Sewer
AI	Area Inlet	⊕	Utility Pole w/ Guy Wires
CB	Curb Inlet / Catch Basin	⊕	Right Angle
CO	Clean Out	⊕	Handicap Parking Space
DS	Down Spout	⊕	-
FES	Flared End Section	⊕	-
GI	Grated Inlet	⊕	-
MH	Manhole	⊕	-
CMF	Corrugated Metal Pipe	⊕	-
CP	Cast Iron Pipe	⊕	-
PVC	Polyvinyl Chloride Pipe	⊕	-
RCP	Reinforced Concrete Pipe	⊕	-
VCP	Unreinforced Concrete Pipe	⊕	-
	Verified City Pipe	⊕	-

**PARKING CALCULATIONS:**

**PARKING REQUIRED:**  
1 SPACE FOR EACH 2 GASOLINE PUMPS, 20 PUMPS = 10 SPACES  
NO LOADING SPACES REQUIRED (LESS THAN 5000 SF)

**PARKING PROVIDED:**  
41 SPACES INCLUDING 2 HANDICAP AND 3 LOADING SPACES

The original of this drawing is on file at the office of The Clayton Engineering Company. Any modifications to this drawing shall release said Clayton Engineering Company, the Engineer and/or the Surveyor whose seal appears hereon from any liability resulting from said unauthorized modifications.

Call Before you DIG  
1-800-344-7483  
MISSOURI ONE-CALL SYSTEM INC.

Underground facilities, structures & utilities have been plotted from available surveys, records & information, and therefore, do not necessarily reflect the actual existence, nonexistence, size, type, number or location of these facilities, structures, & utilities. The Contractor shall be responsible for verifying the actual location of all underground facilities, structures, & utilities, either shown or not shown on these plans. The underground facilities, structures, & utilities shall be located in the field prior to any grading, excavation or construction of improvements. These provisions shall in no way absolve any party from complying with the Underground Facility Safety and Damage Prevention Act, Chapter 319, RSMo.

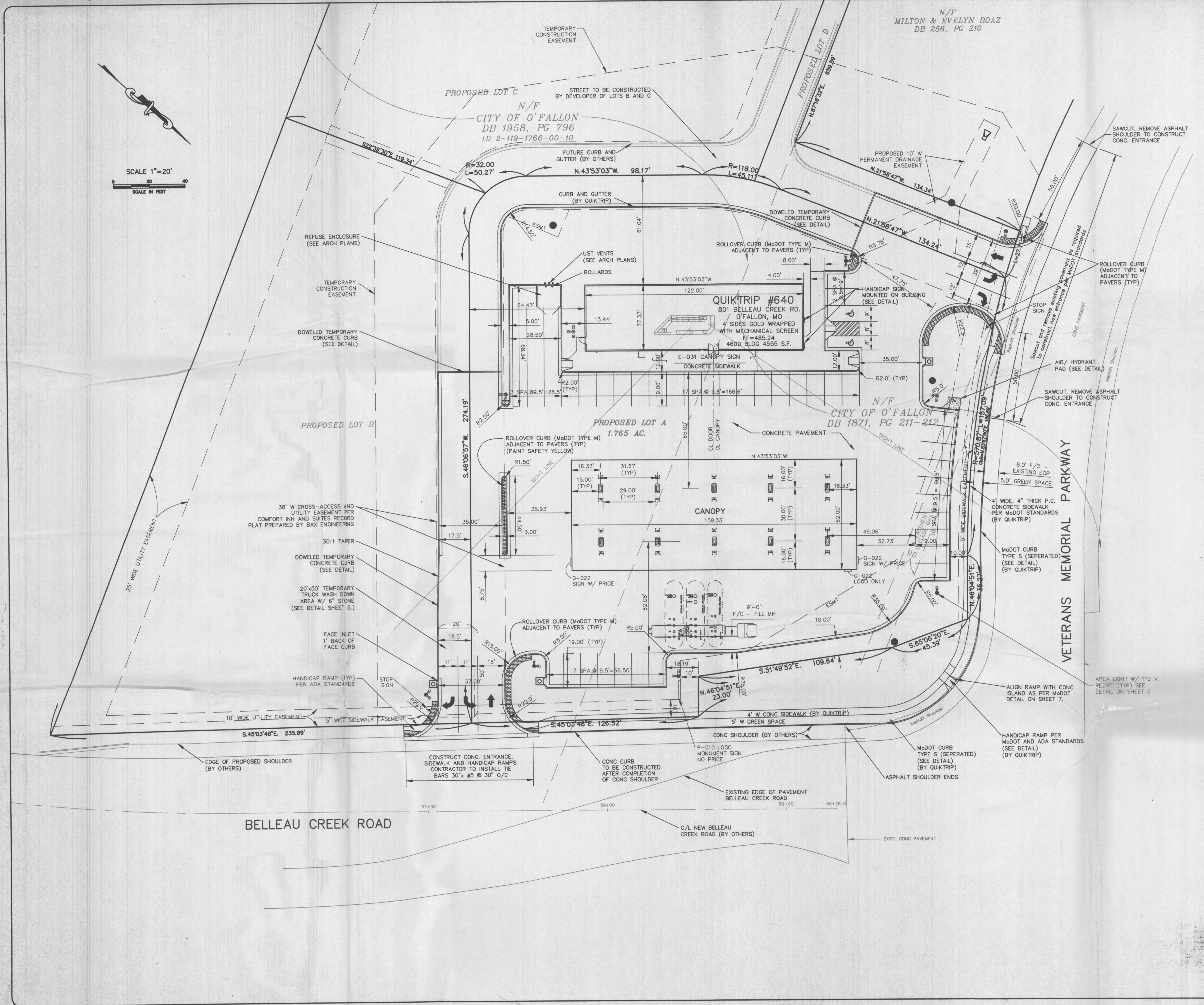
NO.	DATE	DESCRIPTION
1.	11/9/00	AJM REVISED PER QUIKTRIP
2.	12/12/00	AJM REVISED SIGN LAYOUT PER QUIKTRIP
3.	1/13/01	AJM REVISED ENTRANCE, MISC. PBR CITY/ GRADING IN BACK, MISC. PER QT
4.	1/18/01	AJM REVISED PER CITY
5.	3/7/01	AJM REVISED ENTRANCE ON VETERANS AND CURB IN R/W PER MGDOT
6.	3/28/01	AJM REVISED ENTRANCE ON BELLEAU CREEK PER CITY

INDEX	
1.	SITE DIMENSION PLAN
2.	GRADING PLAN
3.	LANDSCAPE PLAN
4.	PAVEMENT PLAN
5.	GENERAL NOTES/ ENTRANCE PLAN
6.	CONSTRUCTION DETAILS
7.	CONSTRUCTION DETAILS
8.	SEWER PROFILES
9.	TOPOGRAPHIC SURVEY
10.	EXISTING DRAINAGE AREA MAP
11.	PROPOSED DRAINAGE AREA MAP

**QUIKTRIP CORPORATION**  
2255 BLUESTONE DRIVE  
ST. CHARLES, MO. 63303  
PH # (636) 916-5706  
FAX # (636) 916-5754

**QUIKTRIP #640  
SITE DIMENSION PLAN**

801 BELLEAU CREEK ROAD	O'FALLON, MISSOURI 63366
<b>the clayton engineering company, inc.</b>	Engineers • Surveyors • Planners
11602 WESTLINE INDUSTRIAL DRIVE ST. LOUIS, MISSOURI 63146 (314) 662-8888 FAX: (314) 662-8888 clayton-engineering.com	Designed: EEK/AJM Drawn: AJM Checked: DAC Date: 10/10/00 Project Number: 99301 Sheet Number: 1 of 11
FILE P:\99301\PLANS\CONST02.DWG	PLOTTED 03/27/2001 10:29 AM



B12001-141