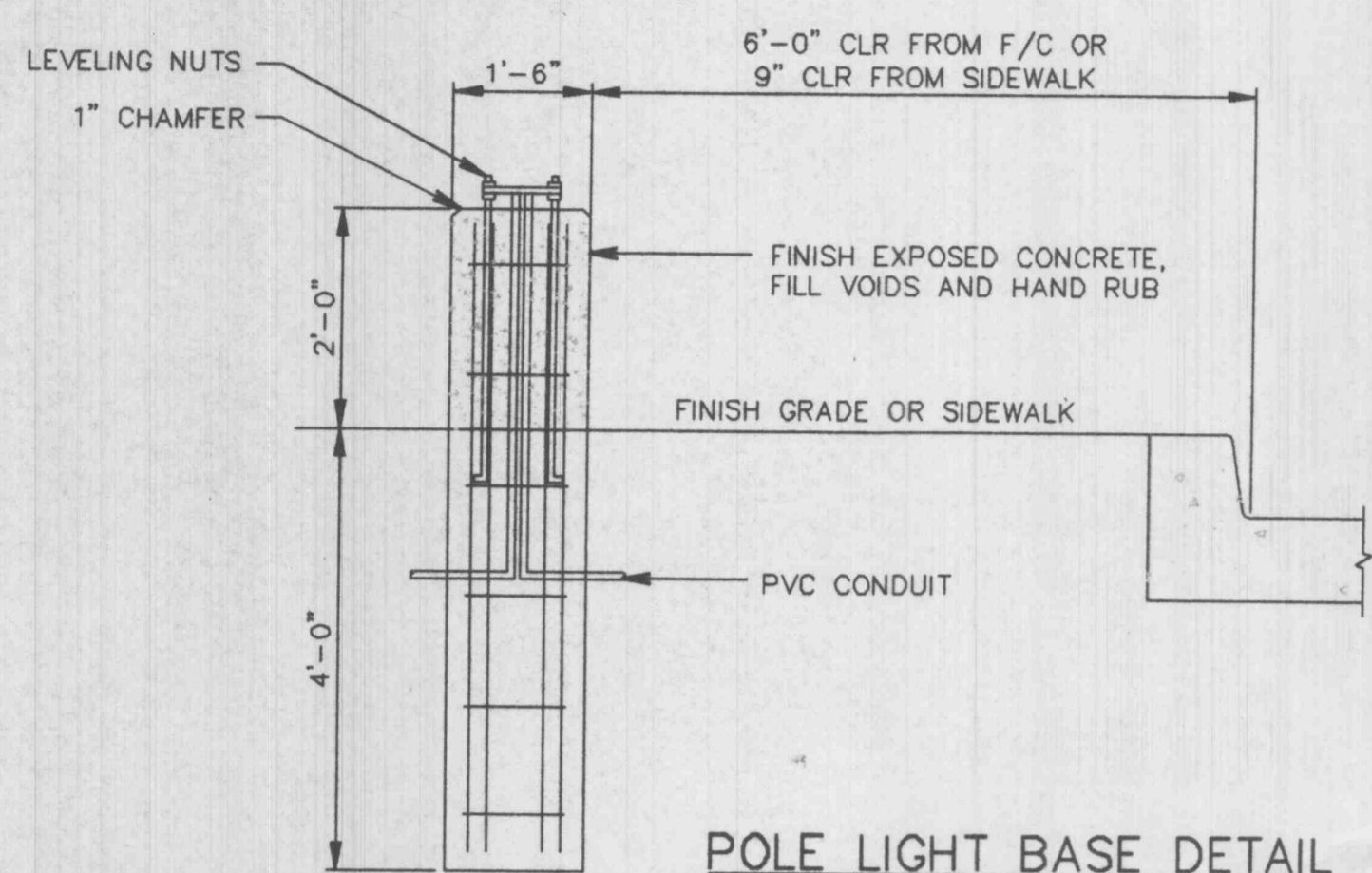
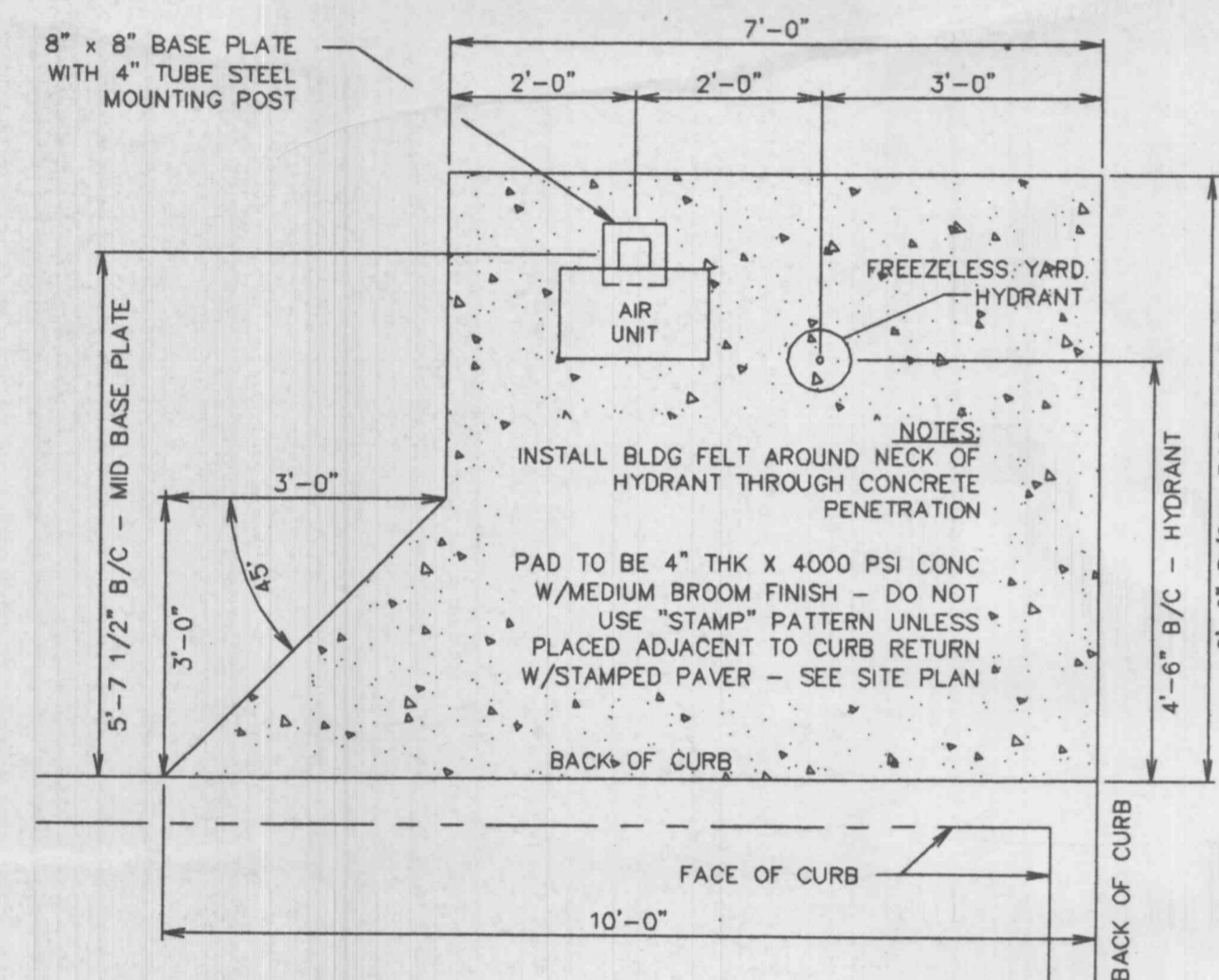


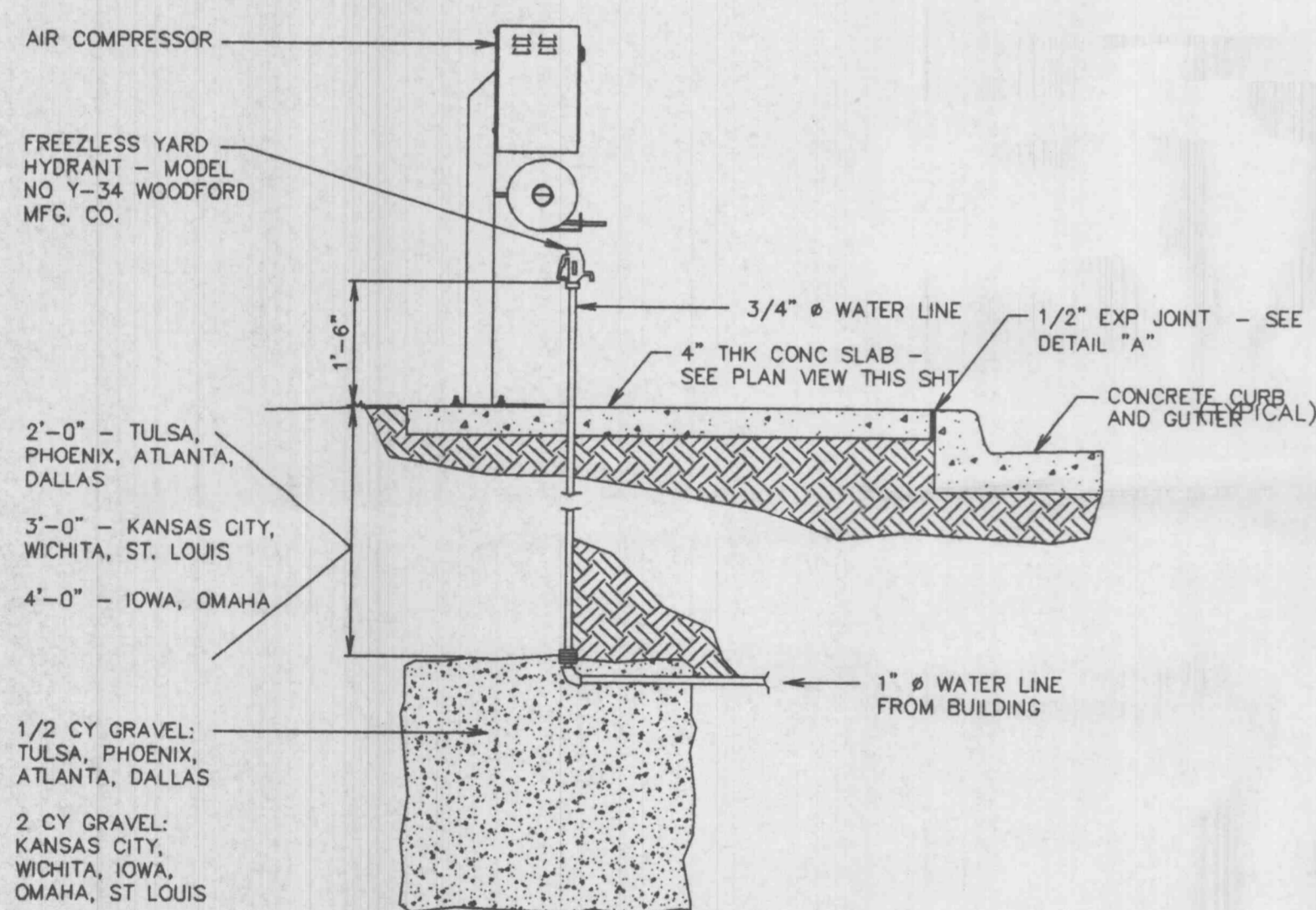
9.5" Ø ANCHOR BOLT TEMPLATE



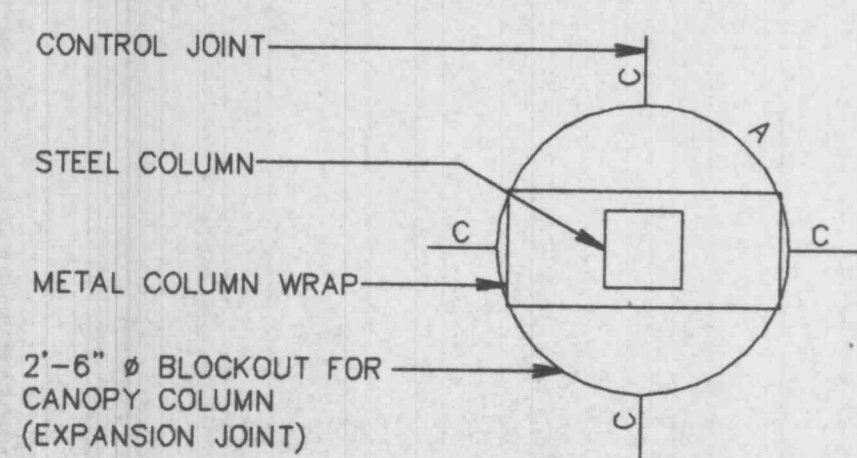
POLE LIGHT BASE DETAIL



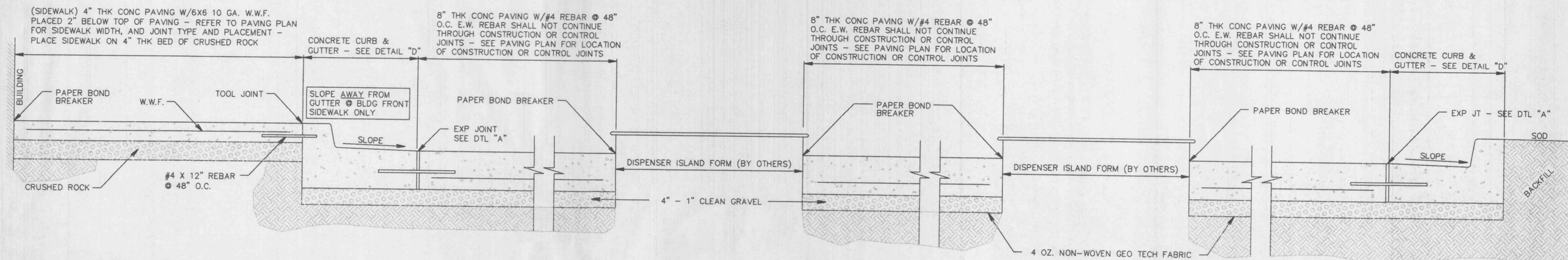
AIR COMPRESSOR AND FREEZELESS YARD HYDRANT PAD - PLAN



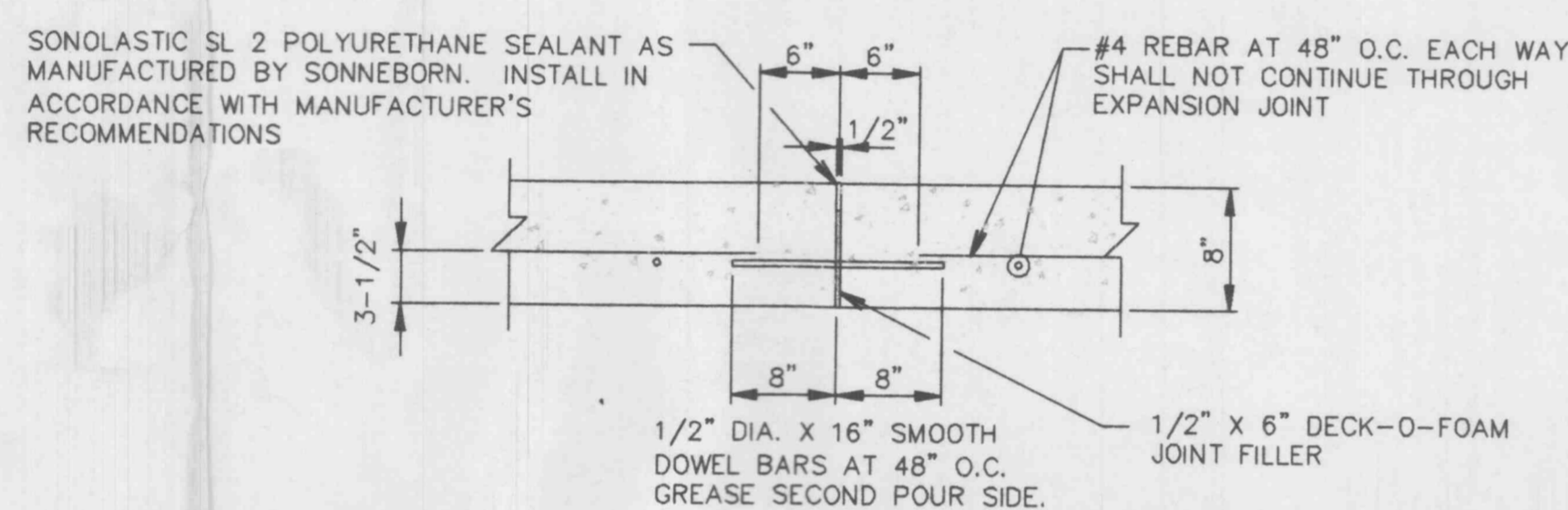
AIR COMPRESSOR AND FREEZELESS YARD HYDRANT PAD - ELEVATION/SECTION



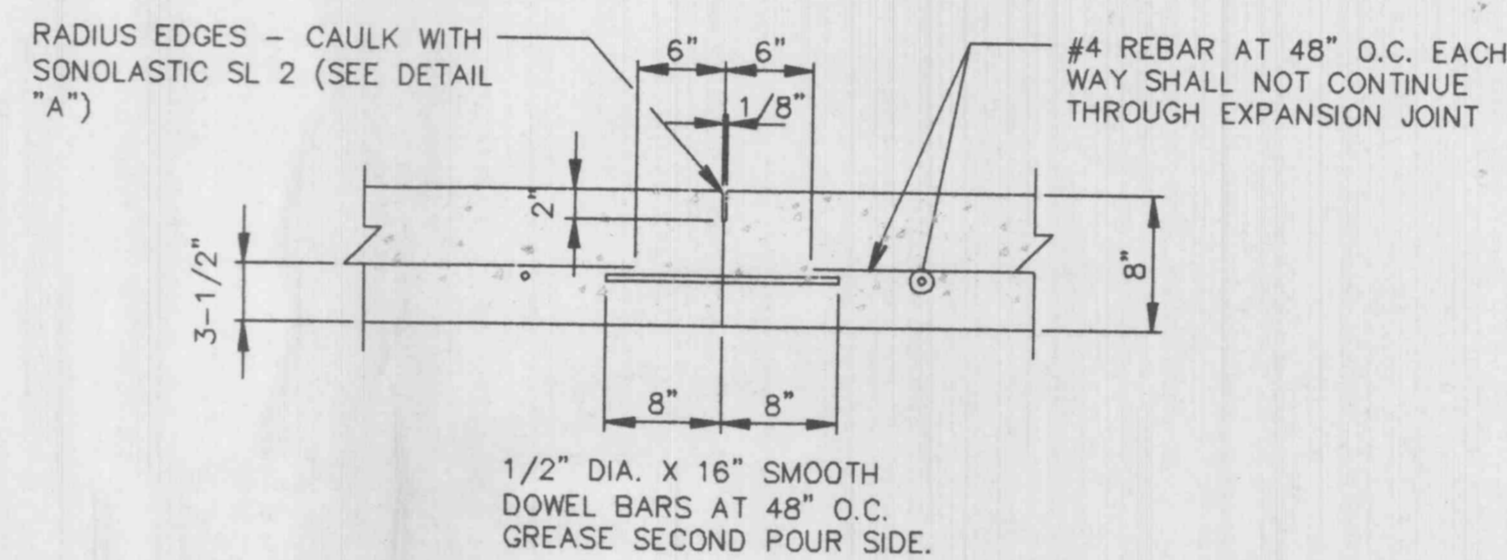
"ROUND" COLUMN BLOCKOUT - PLAN



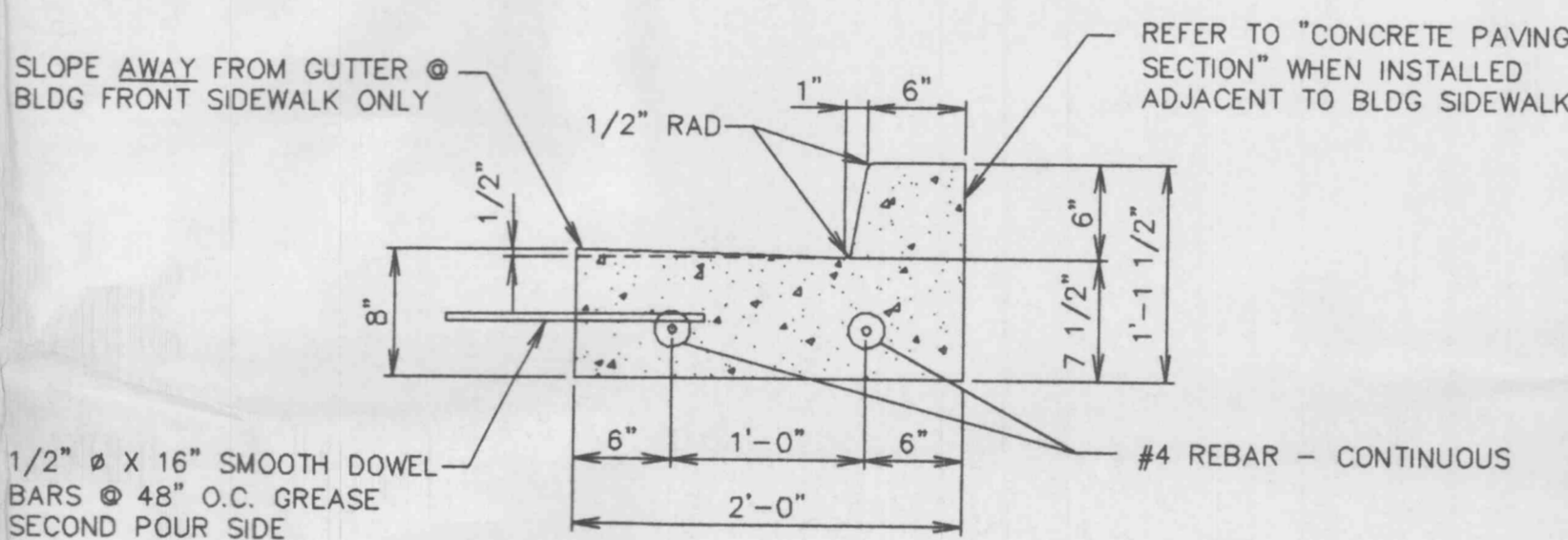
TYPICAL DOUBLE STACK GAS LAYOUT CONCRETE PAVING SECTION THROUGH SITE



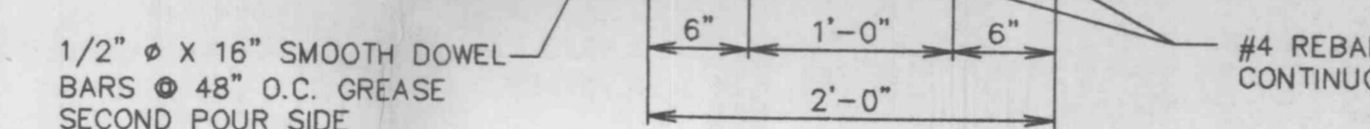
TYPICAL CONCRETE EXPANSION JOINT - DETAIL "A"



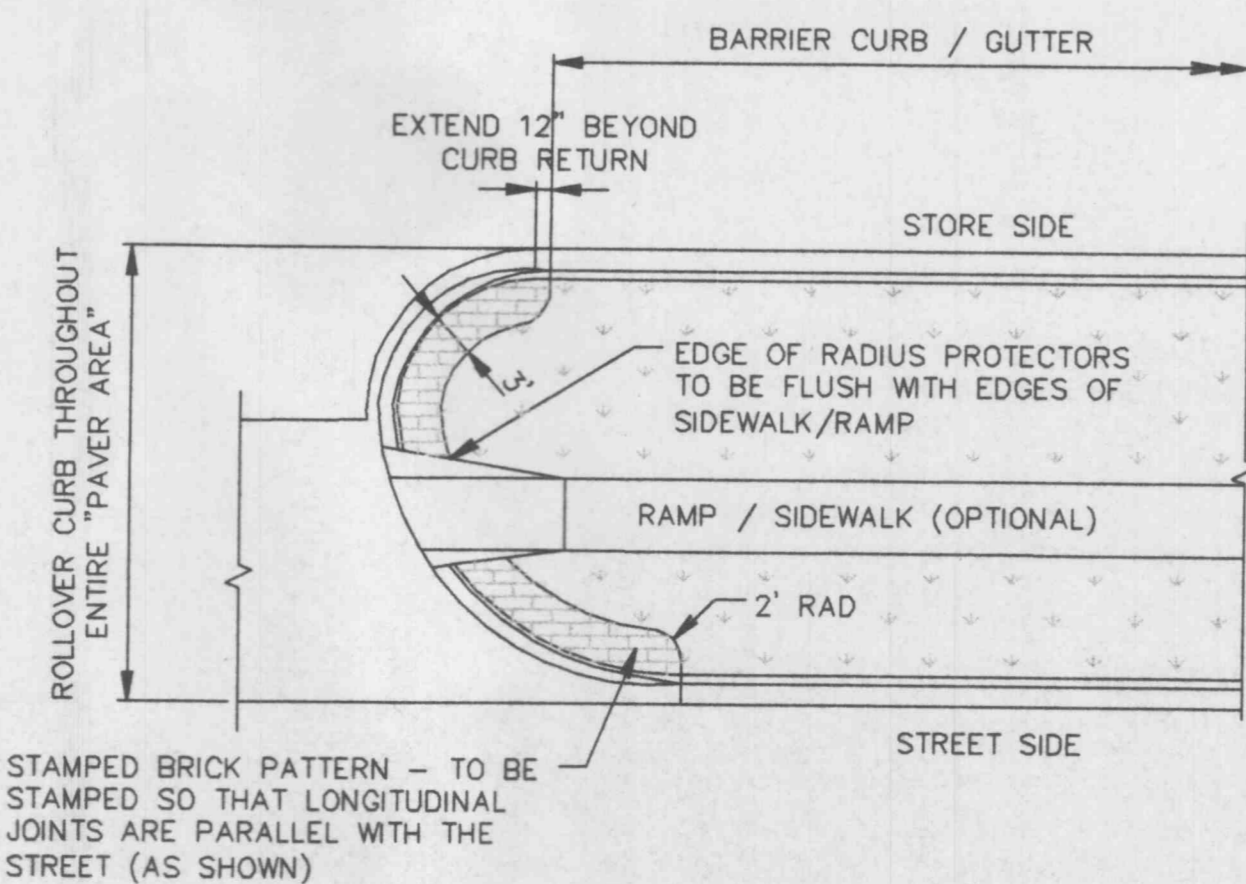
TYPICAL CONCRETE CONSTRUCTION JOINT - DETAIL "B"



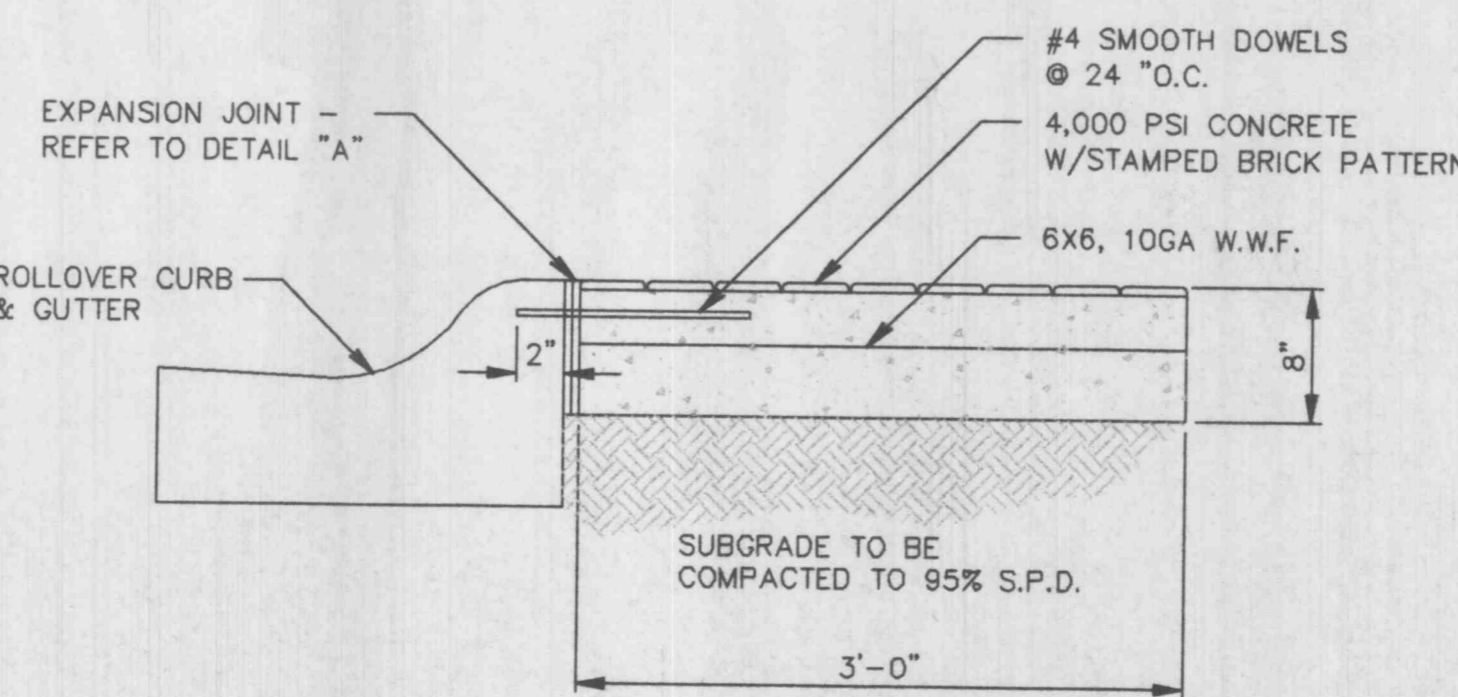
TYPICAL BARRIER CONCRETE CURB AND GUTTER - SECTION "D"



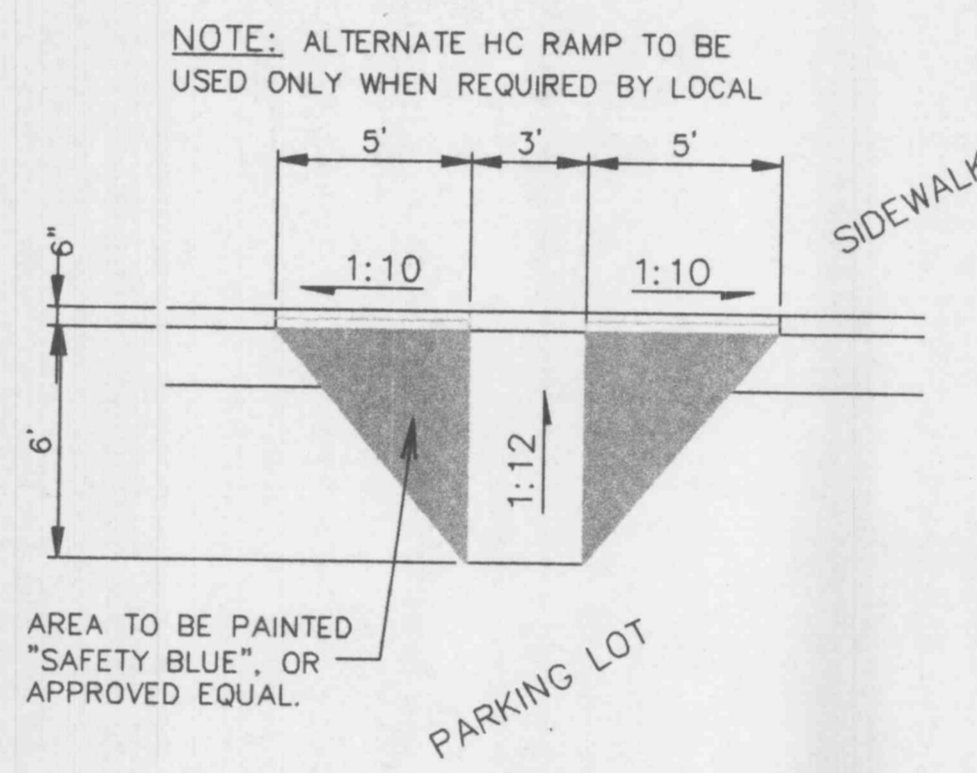
TYPICAL ROLLOVER CONCRETE CURB AND GUTTER - SECTION "E"



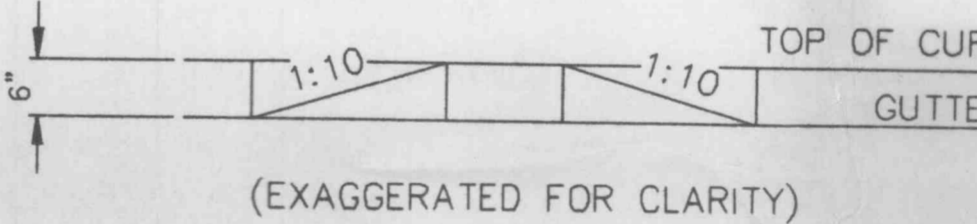
TYPICAL RADIUS PROTECTOR PLACEMENT PLAN



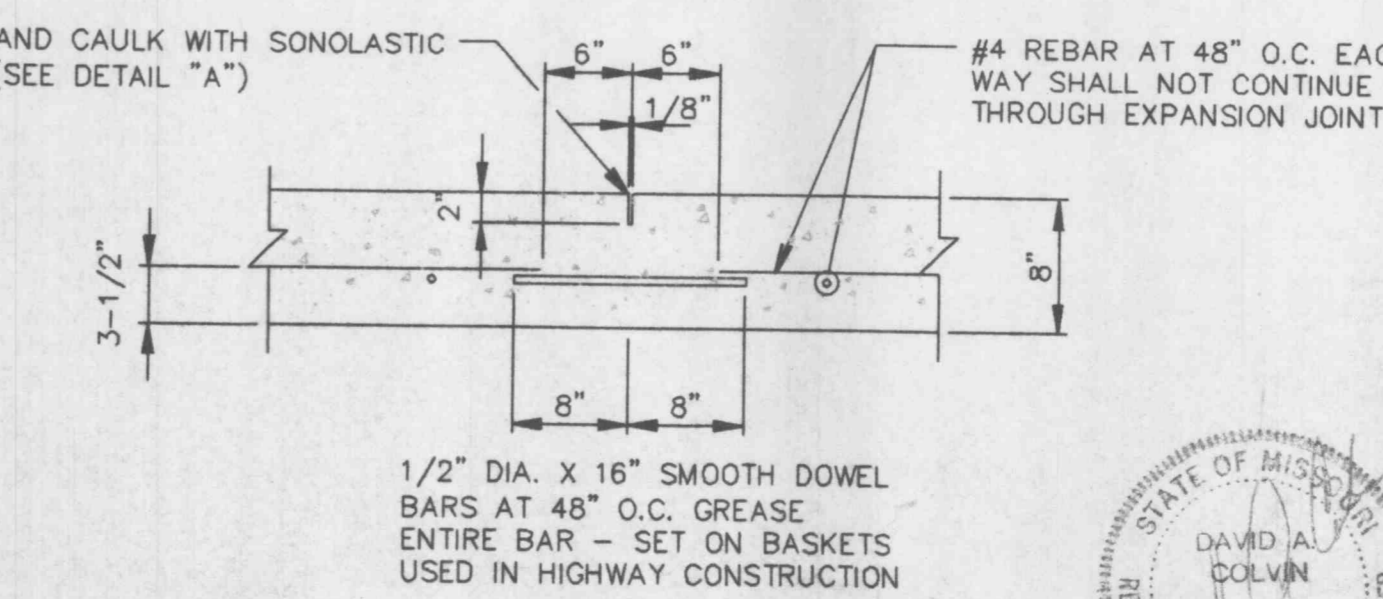
TYPICAL RADIUS PROTECTOR SECTION



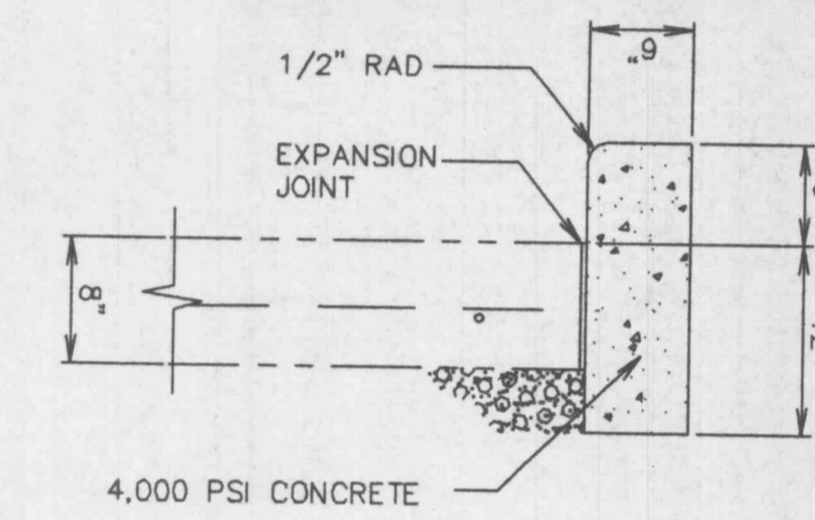
TYPICAL HC RAMP - PLAN



TYPICAL HC RAMP - ELEVATION



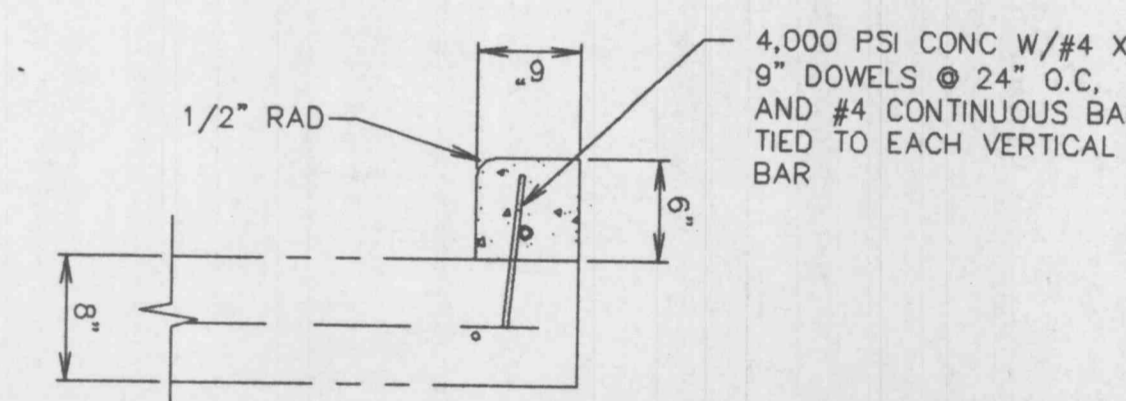
TYPICAL CONCRETE CONTROL JOINT - DETAIL "C"



"NON-DOWELED" TEMPORARY CURB DETAIL

NON-DOWELED DETAIL IS RECOMMENDED FOR SHORT RUNS (50' OR LESS)

DOWELED DETAIL IS RECOMMENDED FOR LONG RUNS (MORE THAN 50')



"DOWELED" TEMPORARY CURB DETAIL

REVISIONS	

**QT** QUIKTRIP CORPORATION  
2255 BLUESTONE DRIVE  
ST. CHARLES, MO. 63303  
PH # (636) 916-5706  
FAX # (636) 916-5754

**QUIKTRIP #640**  
GENERAL NOTES  
CONSTRUCTION DETAILS  
801 BELLEAU CREEK ROAD OFALLON, MISSOURI 63366

**the clayton engineering company, inc.**  
ENGINEERS • SURVEYORS • PLANNERS  
11920 WESTLINE INDUSTRIAL DRIVE  
ST. LOUIS, MISSOURI 63146  
(314) 892-8888 FAX: (314) 892-8668  
clayton-engineering.com

Drawn: ECK/AJM  
Checked: DAC  
Date: 10/10/00  
Project Number: 99301  
Sheet Number: 6 of 11

FILE P:\99301\PLANS\DETAILS01.DWG PLOTTED 01/04/2001 5:37 PM  
F.S. F.B. SUR.