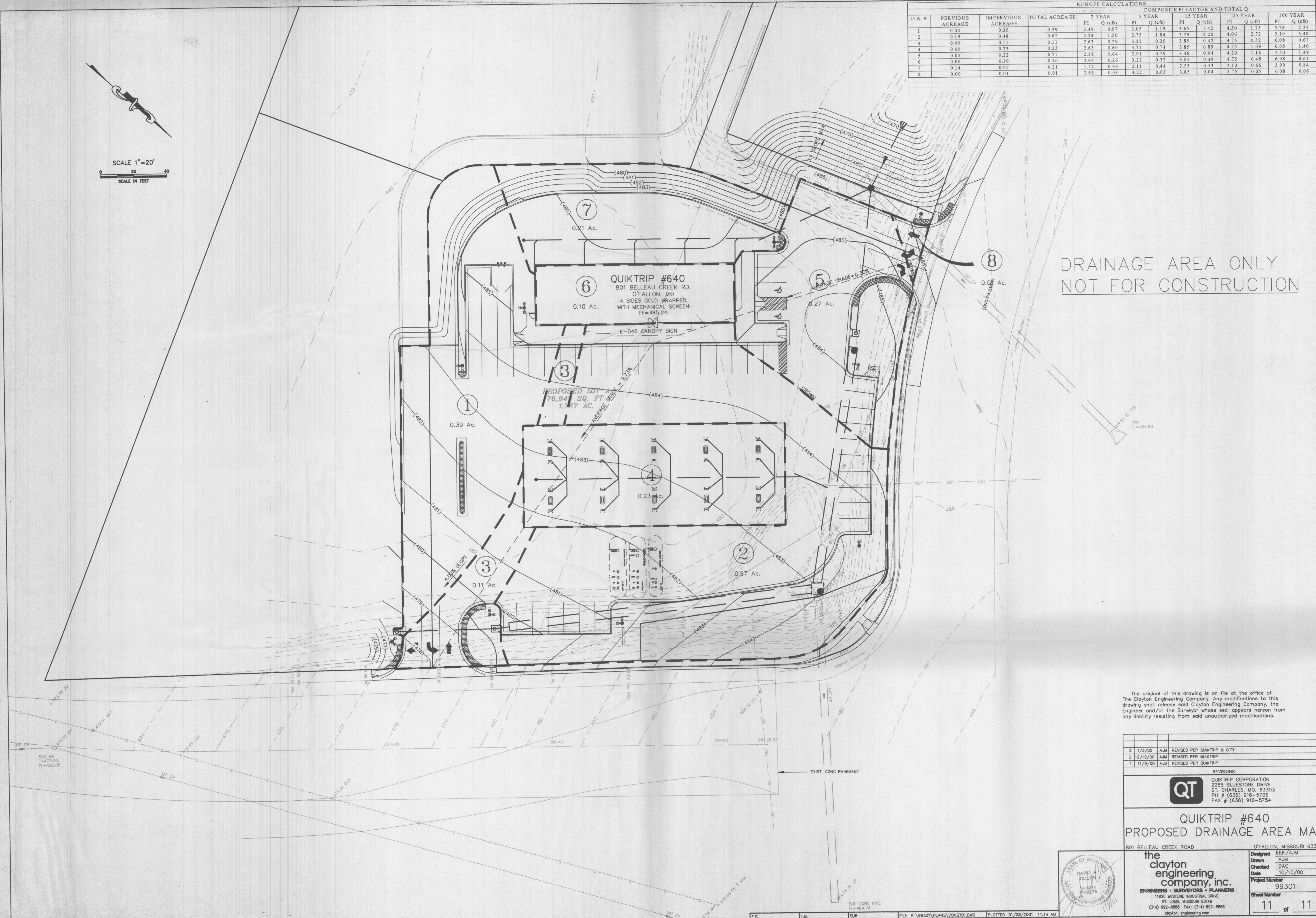
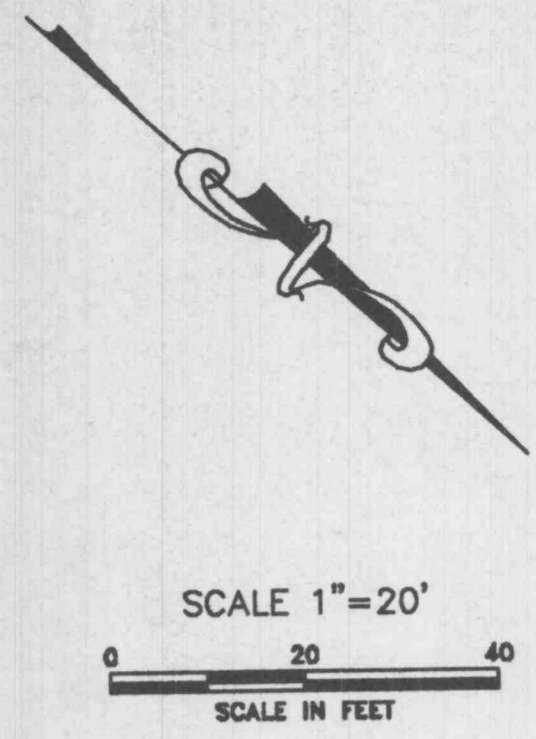


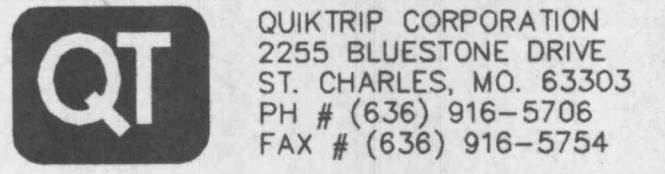
D.A. #	PERVIOUS ACREAGE	IMPERVIOUS ACREAGE	TOTAL ACREAGE	COMPOSITE PI FACTOR AND TOTAL Q									
				2 YEAR		5 YEAR		15 YEAR		100 YEAR			
				PI	Q (cfs)	PI	Q (cfs)	PI	Q (cfs)	PI	Q (cfs)	PI	Q (cfs)
1	0.04	0.35	0.39	2.49	0.97	3.05	1.19	3.65	1.42	4.50	1.75	5.76	2.25
2	0.19	0.48	0.67	2.24	1.50	2.75	1.84	3.29	2.20	4.06	2.72	5.19	3.48
3	0.00	0.11	0.11	2.63	0.29	3.22	0.35	3.85	0.42	4.75	0.52	6.08	0.67
4	0.00	0.23	0.23	2.63	0.60	3.22	0.74	3.85	0.89	4.75	1.09	6.08	1.40
5	0.05	0.22	0.27	2.38	0.64	2.91	0.79	3.48	0.94	4.30	1.16	5.50	1.49
6	0.00	0.10	0.10	2.63	0.26	3.22	0.32	3.85	0.39	4.75	0.48	6.08	0.61
7	0.14	0.07	0.21	1.72	0.36	2.11	0.44	2.53	0.53	3.12	0.66	3.99	0.84
8	0.00	0.01	0.01	2.63	0.03	3.22	0.03	3.85	0.04	4.75	0.05	6.08	0.06



DRAINAGE AREA ONLY
NOT FOR CONSTRUCTION

The original of this drawing is on file at the office of The Clayton Engineering Company. Any modifications to this drawing shall release said Clayton Engineering Company, the Engineer and/or the Surveyor whose seal appears hereon from any liability resulting from said unauthorized modifications.

NO.	DATE	BY	REVISIONS
3	1/3/00	AJM	REVISED PER QUIKTRIP & CITY
2	12/12/00	AJM	REVISED PER QUIKTRIP
1	11/9/00	AJM	REVISED PER QUIKTRIP



QUIKTRIP #640
PROPOSED DRAINAGE AREA MAP
801 BELLEAU CREEK ROAD, O'FALLON, MISSOURI 63366

the clayton engineering company, inc.
ENGINEERS • SURVEYORS • PLANNERS
11920 WESTLINE INDUSTRIAL DRIVE
ST. LOUIS, MISSOURI 63146
(314) 992-8888 FAX: (314) 992-8888
clayton-engineering.com

Designed: EKK/AJM
Drawn: AJM
Checked: DAC
Date: 10/10/00
Project Number: 99301
Sheet Number: 11 of 11

