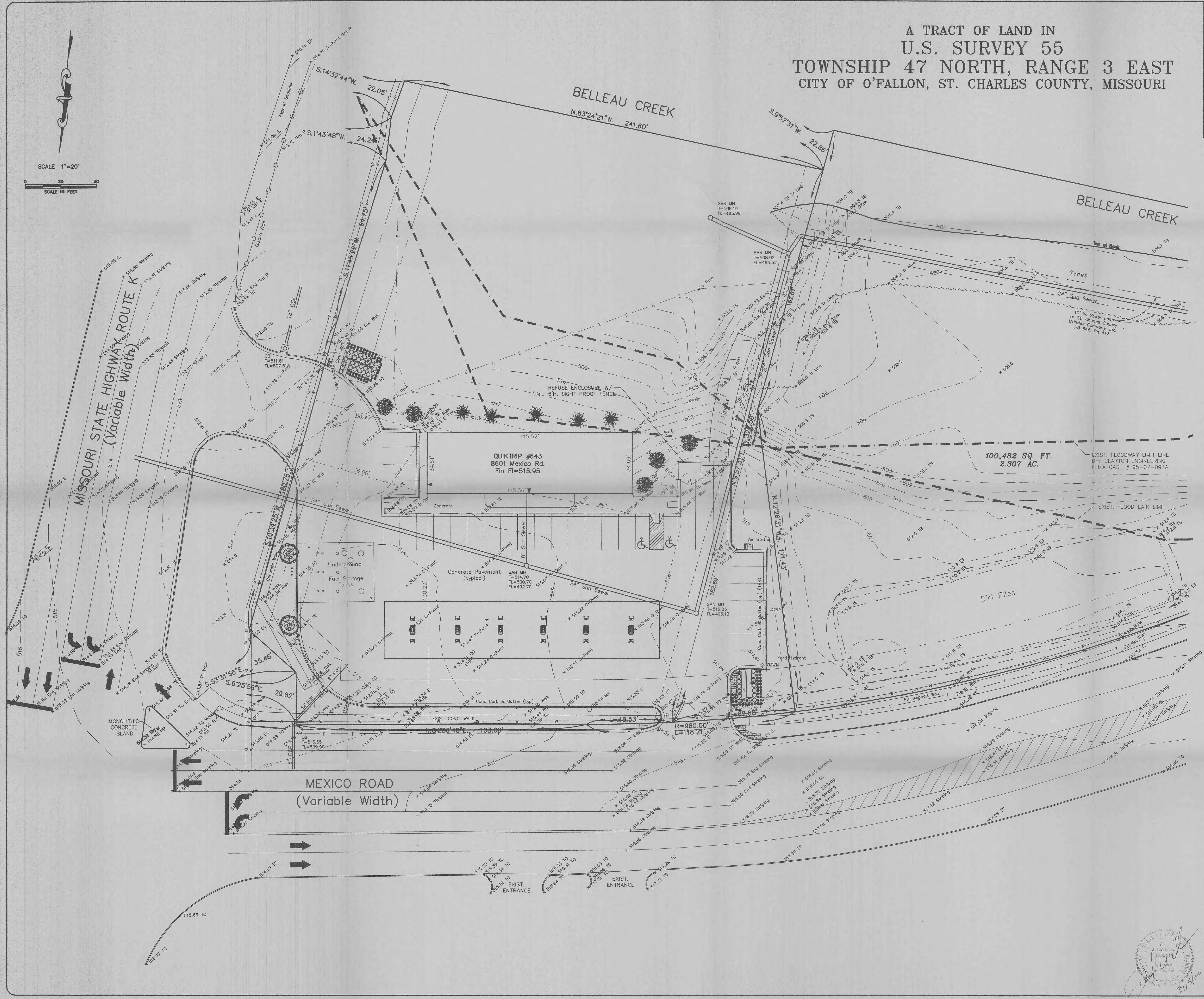
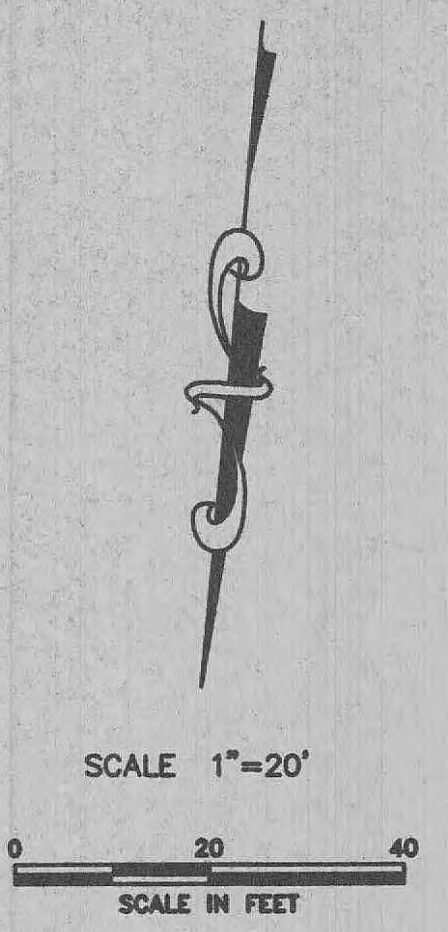
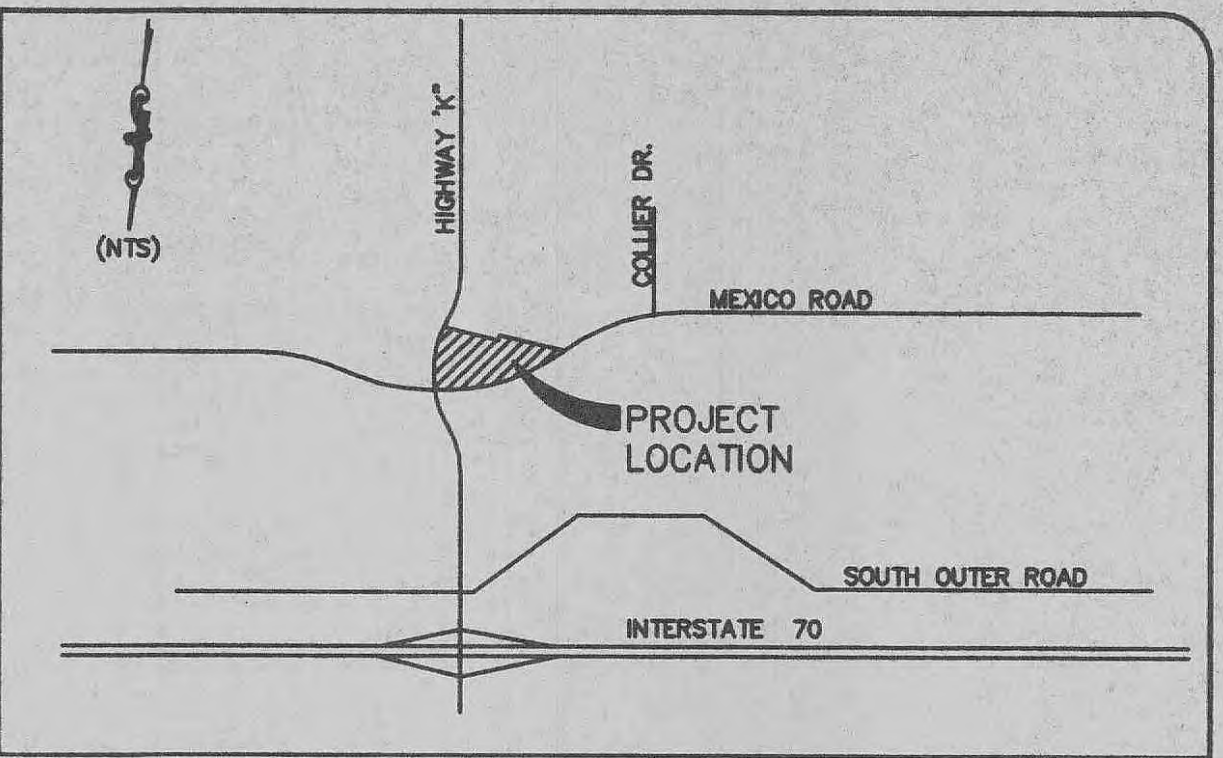


A TRACT OF LAND IN
 U.S. SURVEY 55
 TOWNSHIP 47 NORTH, RANGE 3 EAST
 CITY OF O'FALLON, ST. CHARLES COUNTY, MISSOURI



100,482 SQ. FT.
 2.307 AC.

QUIKTRIP #643
 8601 Mexico Rd.
 Fin Fl=515.95

MEXICO ROAD
 (Variable Width)

REVISIONS	

QT	
QUIKTRIP CORPORATION 2255 BLUESTONE DRIVE ST. CHARLES, MO. 63303 PH # (314) 916-5706 FAX # (314) 916-5754	
QUIKTRIP #643 AS BUILT SURVEY	
8601 MEXICO RD.	O'FALLON MO 63366
the clayton engineering company, inc. ENGINEERS • SURVEYORS • PLANNERS 11920 WESTLINE INDUSTRIAL DRIVE ST. LOUIS, MISSOURI 63146 (314) 692-8888 FAX: (314) 692-8888 clayton-engineering.com	
Designed: AMH Drawn: HRL Checked: AMH Date: 2/14/00 Project Number: 94140 Sheet Number: 3 of 3	FILE L:\94140\ACAD\TOP003.DWG PLOTTED 03/13/2000 10:42 AM F.S.