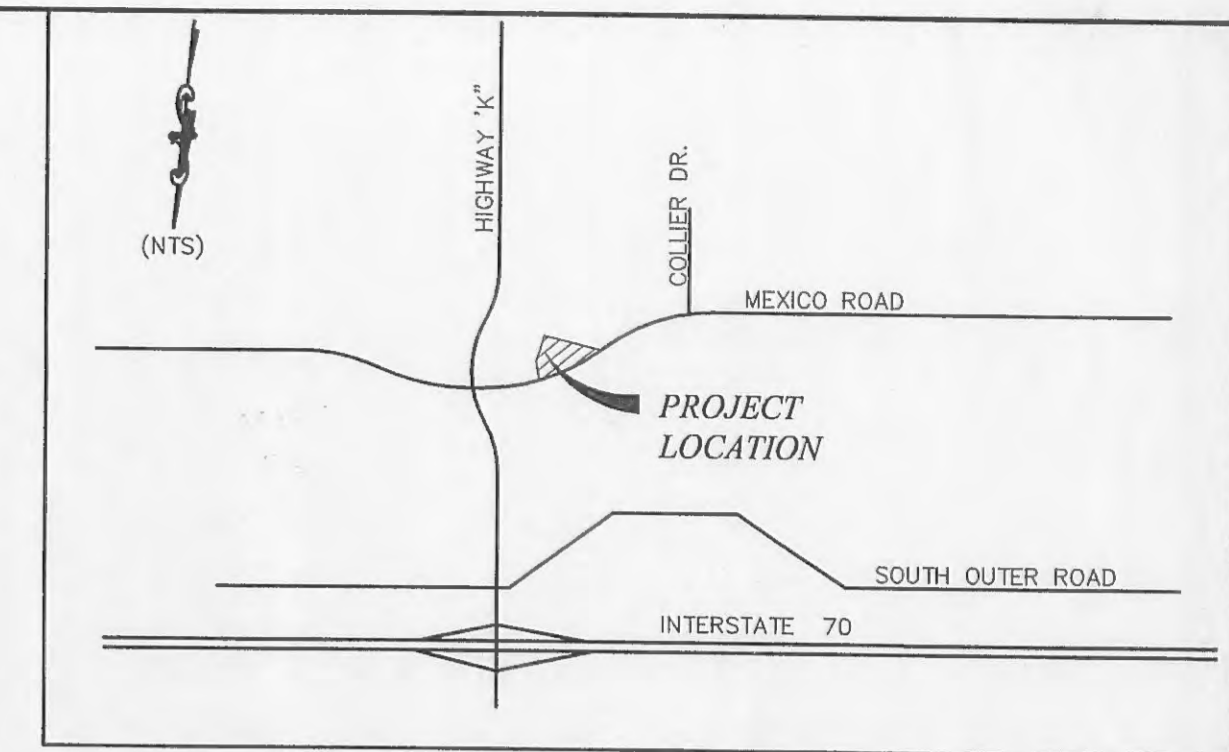


BENCHMARK: CENTER OF HEADWALL ON THE W. SIDE HIGHWAY "K" AT BELLEAU CREEK ELEV.=511.13
 TEMPORARY SITE BENCHMARK: S.W. CORNER OF CONCRETE PAD ON QUIKTRIP PROPERTY ELEV.=517.99

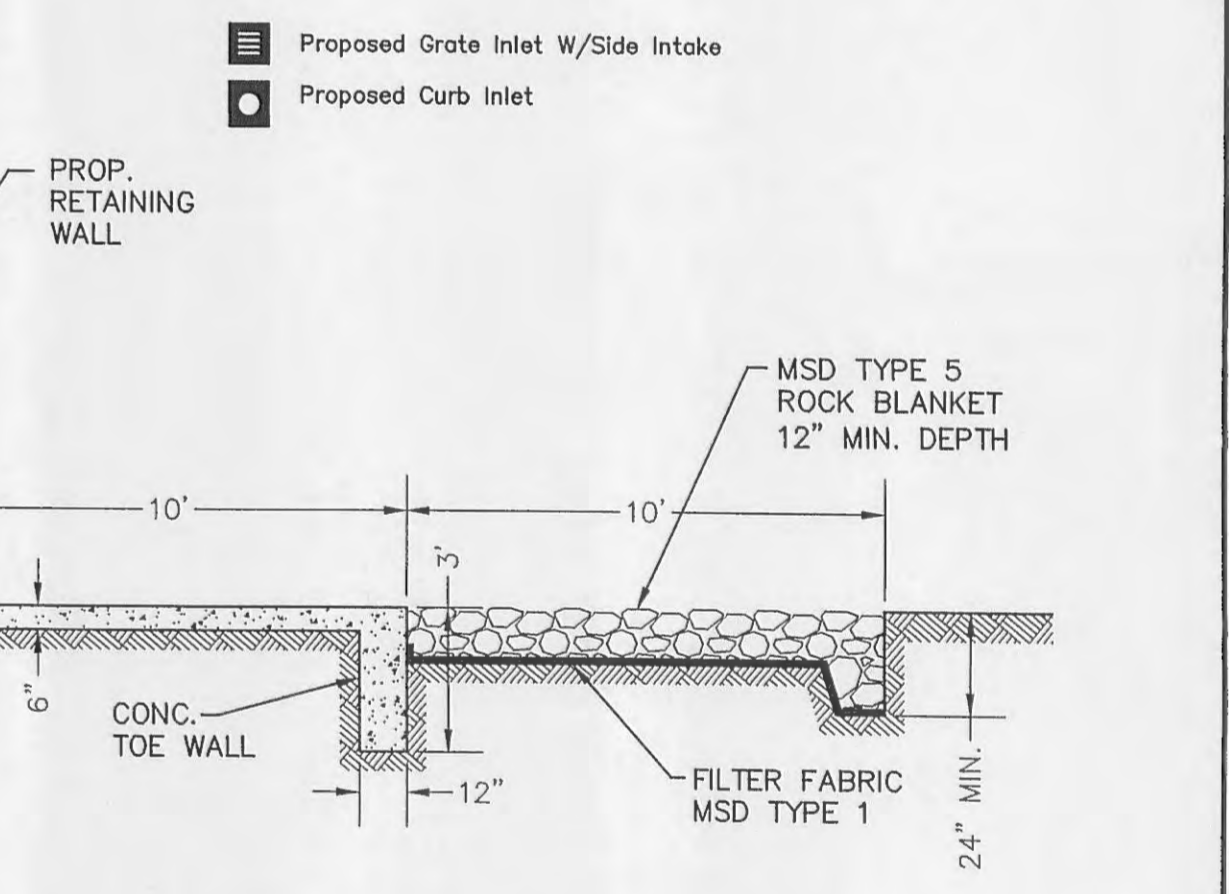
ESTIMATED EARTHWORK QUANTITIES
 CUT = 555 CU. YDS.
 FILL = 1736 CU. YDS.
 SHRINKAGE @ 10% = 174 CU. YDS.
 TOTAL FILL REQUIRED = 1910 CU. YDS.
 SHORTAGE = 1,355 CU. YDS.
 *ASSUMED - SHALL BE VERIFIED BY SOILS ENGINEER.

ALL QUANTITIES SHALL BE VERIFIED BY THE CONTRACTOR BEFORE SUBMITTING A BID FOR THE PROJECT. ANY DISCREPANCIES SHALL BE BROUGHT TO THE ENGINEER'S ATTENTION PRIOR TO BID SUBMITTAL. QUANTITIES DO NOT INCLUDE UTILITY TRENCHING, UNACCEPTABLE UNDERLYING SOILS (IF ANY), VEGETATION STRIPPING, WALL EXCAVATION, OR GRANULAR BACKFILL OF TRENCHES UNDER PAVEMENT.



LEGEND

AI	Area Inlet	N/F	Now or Formerly
B	Asph Building Corner	OHE	Overhead Electric
CB	Catch Basin	PB	Plot Book
CHB	Chord Bearing	PG	Page
CL	Centerline	PVC	Polyvinyl Chloride Pipe
CMP	Corrugated Metal Pipe	Pvmt	Pavement
Conc	Concrete	R	Radius of Curve
CP	Concrete Pipe	RCP	Reinforced Concrete Pipe
DB	Deed Book	R/W	Right of Way
DCB	Double Catch Basin	Sig	Signal
DFL(N)	Drop FL From North	TB	Top of Bank
EP	Edge of Pavement	TC	Top of Curb
Fen	Fence	TJ	Telephone Junction Box
FES	Flored End Section	TM	Telephone Co. Manhole
FF	Finished Floor	Trans	Transformer
FL	Flowline	TS	Toe of Slope
GI	Gate Inlet	Typ	Typical
GM	Gate Manhole	UGF	Underground Electric
Gr	Gas Meter	UGFO	Underground Fiber Optic
GW	Gas Valve	UGT	Underground Telephone
GW	Guy Wire	UP	Utility Pole
L	Length of Curve	VCP	Vitrified Clay Pipe
LT	Light	WM	Water Meter
LS	Light Standard	WMH	Water Co. Manhole
MH	Manhole	WV	Water Valve
MSD	MSD Sewer ID	TW	Top of Wall
SGI	Side Intake Gate Inlet	FG BW	Finish Grade @ Bottom of Wall
EOP	End of Pipe		



CONCRETE SWALE DETAIL SECTION X-X
 N.T.S.

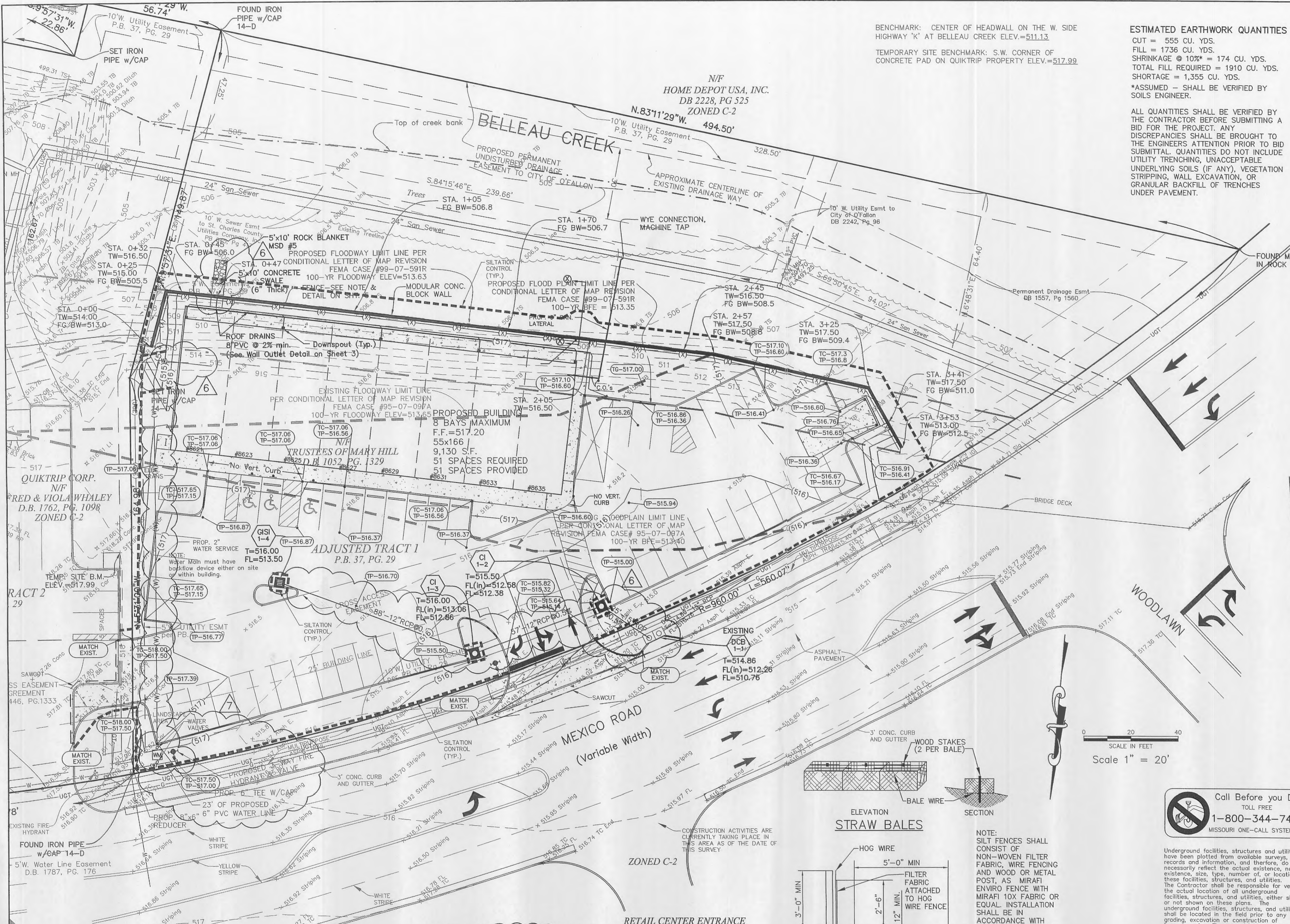
NO.	DATE	BY	DESCRIPTION
8	09/29/05	GMS	ADDED GRADING NOTE PER CITY
7	09/14/05	EAS	FIRE DISTRICT COMMENTS - MOVED HYDRANT
6	08/26/05	MRW	FIELD CHANGES
5	08/09/05	EAS	ADDED BOTTOM OF WALL ELEVATIONS
4	06/16/05	GMS	CITY COMMENTS - NO CHANGES TO THIS SHEET
3	05/26/05	EAS	CITY COMMENTS
2	05/10/05	GMS	FIRE DISTRICT COMMENTS - ADDED HYDRANT
1	05/04/05	GMS	CITY COMMENTS

GRADING PLAN
RETAIL CENTER
 HWY "K" & Mexico Road
 O'Fallon, Missouri 63366

Prepared for:
CLEAN-N-CRUISE L.L.C.
 2010 Bluestone Drive
 St. Charles, MO 63303
 (636) 669-9111, fax: (636) 669-9117

the clayton engineering company, inc.
 ENGINEERS • SURVEYORS • PLANNERS
 11920 WESTLINE INDUSTRIAL DRIVE
 ST. LOUIS, MISSOURI 63146
 (314) 692-8888 FAX: (314) 692-8888
 clayton-engineering.com

Designed: EAS/GMS
 Drawn: EAS
 Checked: GMS
 Date: 03/17/05
 Project Number: 99007-5
 Sheet Number: 2 of 6



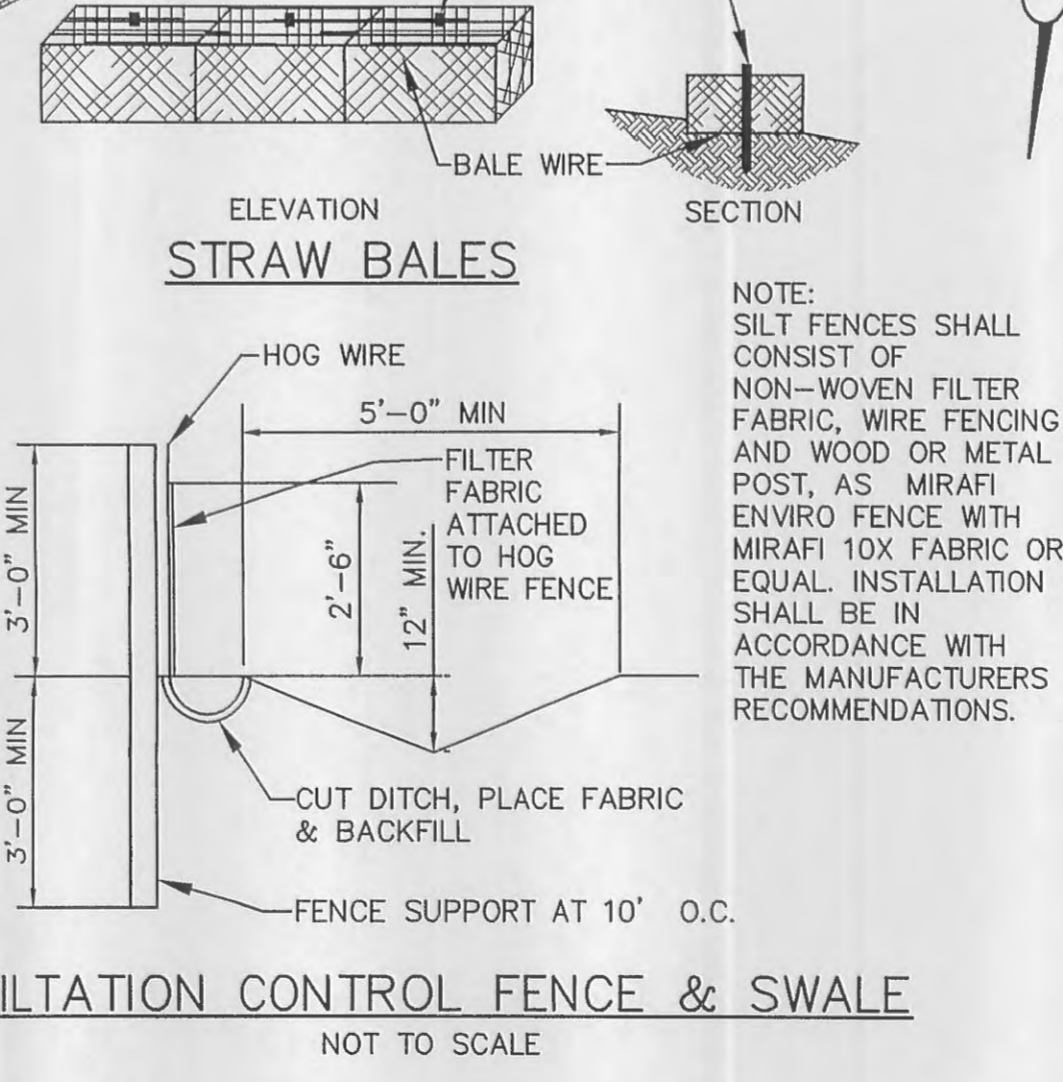
GRADING NOTE (CONTINUED):

- Curve must be plotted to show density from a minimum of 90% Compaction and above as determined by the "Modified AASHTO T-180 Compaction Test" (A.S.T.M.-D-1157) or from a minimum of 95% as determined by the "Standard Proctor Test AASHTO T-99, Method C" (A.S.T.M.-D-698). Proctor type must be designated on document.
- Curve must have at least 5 density points with moisture content and sample locations listed on document
- Specific gravity
- Natural moisture content
- Liquid limit
- Plastic limit

Be advised that if this information is not provided to the City's Construction Inspector the City will not allow grading or construction activities to proceed on any project site.

GRADING NOTE:
 Developer must supply City construction inspectors with soil reports prior to or during site soil testing. The soil report will be required to contain the following information on soil test curves (Proctor reports) for projects within the City.

- Maximum dry density
- Optimum moisture content
- Maximum and minimum allowable moisture content



SILTATION CONTROL FENCE & SWALE
 NOT TO SCALE

NOTE:
 SILT FENCES SHALL CONSIST OF NON-WOVEN FILTER FABRIC, WIRE FENCING AND WOOD OR METAL POST, AS MIRAFI ENVIRO FENCE WITH MIRAFI 10X FABRIC OR EQUAL. INSTALLATION SHALL BE IN ACCORDANCE WITH THE MANUFACTURERS RECOMMENDATIONS.

The signed and sealed original of this drawing is on file at the offices of The Clayton Engineering Company, Inc. The signed and sealed original is the official document and shall take precedence over any digital version.

Call Before you DIG
 TOLL FREE
1-800-344-7483
 MISSOURI ONE-CALL SYSTEM INC.

Underground facilities, structures and utilities have been plotted from available surveys, records and information, and therefore, do not necessarily reflect the actual existence, non-existence, size, type, number of, or location of these facilities, structures, and utilities. The Contractor shall be responsible for verifying the actual location of all underground facilities, structures, and utilities, either shown or not shown on these plans. The underground facilities, structures, and utilities shall be located in the field prior to any grading, excavation or construction of improvements. These provisions shall in no way absolve any party from complying with the Underground Facility Safety and Damage Prevention Act, Chapter 319, RSMo.

Greg Michael Staley
 Professional Engineer
 No. E-28986
 9/29/2005