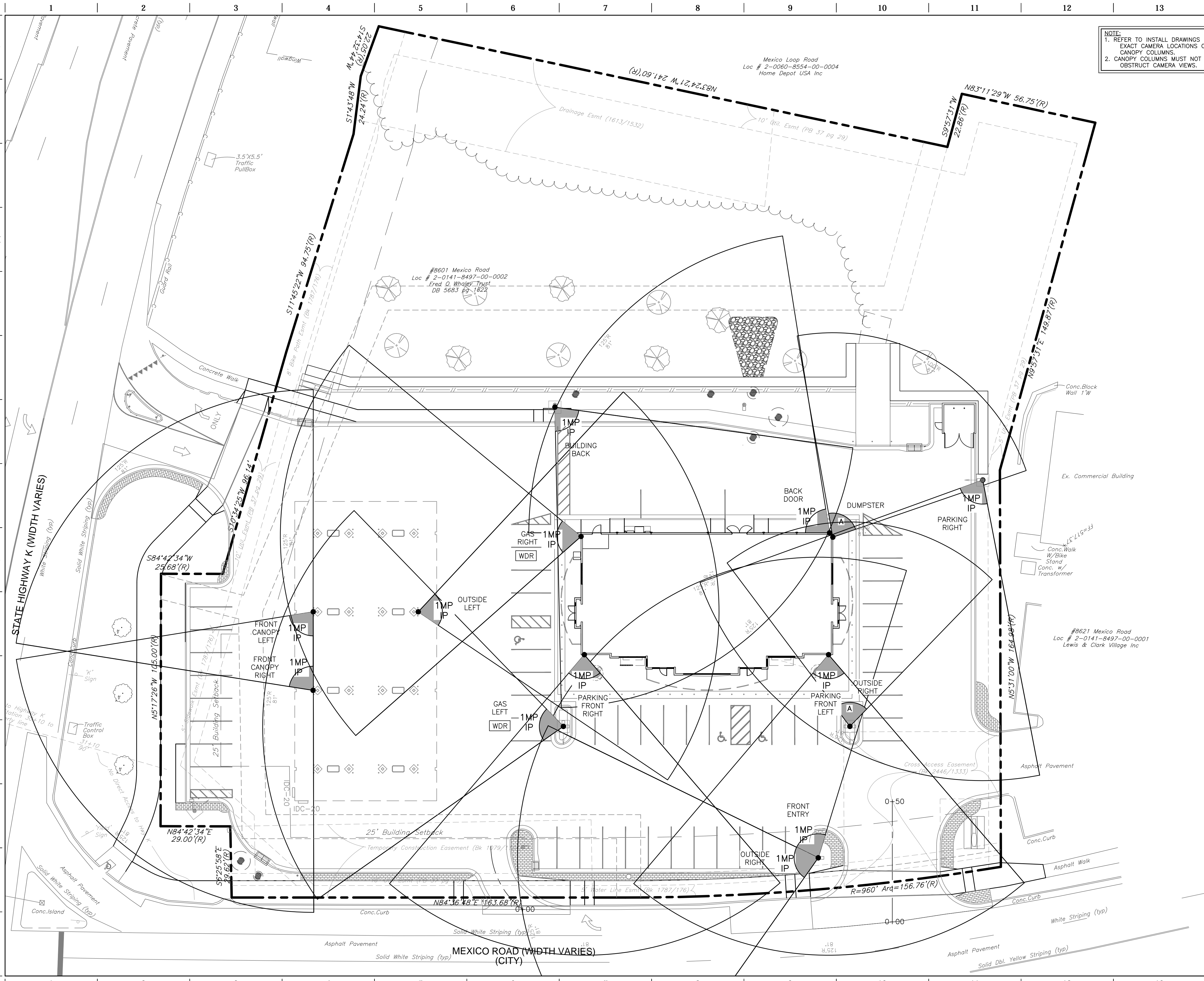


FILE LOCATION: \\141029 - QuikTrip #0643 Mexico and Highway K (City) - 0643 Civi.dwg TAB NAME: C170 Security USER: rkrfyer SAVED: 12/15/2015 2:57 PM PLOTTED: 12/16/2015 8:05 AM



NOTE:
 1. REFER TO INSTALL DRAWINGS FOR EXACT CAMERA LOCATIONS ON CANOPY COLUMNS.
 2. CANOPY COLUMNS MUST NOT OBSTRUCT CAMERA VIEWS.

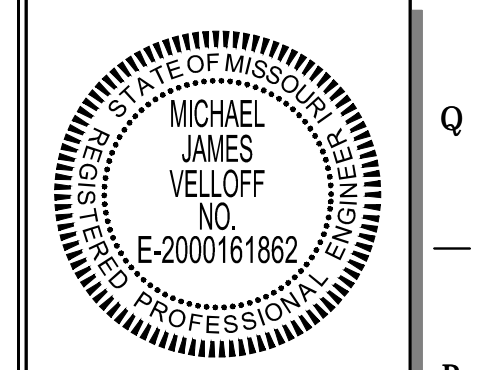
SECURITY GENERAL NOTES
 RE: E003 FOR REQUIRED CONDUITS.

OUTDOOR SECURITY CAMERA EQUIPMENT SUMMARY TABLE

CAMERA KITS		EXTENDERS	
ANALOG	IP	IP	IP
OUTDOOR ANALOG CAMERA KITS	OUTDOOR IP CAMERA KITS	1 MP OUTDOOR CANOPY CAMERA	CAMERA EXTENDERS
EA.	EA.	EA.	EA.
2	9	3	*

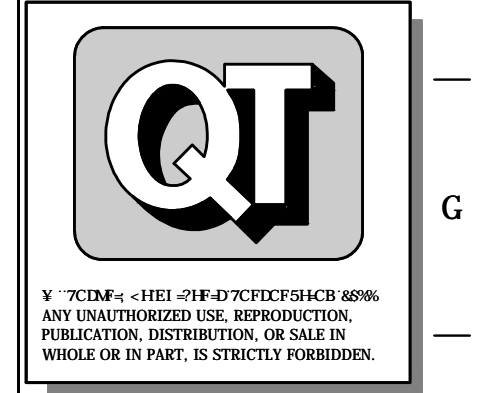
NOTES:
 *TO BE FILLED OUT BY GENERAL CONTRACTOR.
 1. 12V PINHOLE CAMERA BALLUNS = 4 ON ANGLED ENTRY, 6 ON FLAT ENTRY.
 2. 24V ANALOG CAMERA BALLUNS = OUTDOOR ANALOG CAMERA KITS + 2.
 3. LICENSES = OUTDOOR IP CAMERA KITS + 1 MP OUTDOOR CANOPY CAMERAS + 11

LEGEND:
 WDR WIDE DYNAMIC RANGE CAMERA
 [Symbol] AUDIO VIDEO IN USE SECURITY SIGN



PROJECT NO. 141029
 NAME: MICHAEL J. VELLOFF
 LICENSE NUMBER: E-2000161862
 DISCIPLINE: CIVIL
 CORPORATION AUTHORITY NUMBER: 001194
 THE SEAL OF MICHAEL J. VELLOFF ON THIS DRAWING APPLIES ONLY TO THE CIVIL/SITE ENGINEERING SHOWN. IT DOES NOT APPLY, NOR IS ANY RESPONSIBILITY TAKEN FOR ENVIRONMENTAL, GEOTECHNICAL (INCLUDING BUT NOT LIMITED TO SLOPE STABILITY), STRUCTURAL, HVAC, PLUMBING, ELECTRICAL, FIRE PROTECTION, TRAFFIC ENGINEERING, SURVEYING (BOUNDARY AND TOPOGRAPHIC), OR ARCHITECTURAL (BUILDING OR LANDSCAPE).

QuikTrip No. 0643S
 8601 Mexico Road
 O'Fallon, Missouri 63366



PROTOTYPE: P-83
 DIVISION: 06
 VERSION: 001
 DESIGNED BY: RKF
 DRAWN BY: RKF
 REVIEWED BY: MJV

REV	DATE	DESCRIPTION

ORIGINAL ISSUE DATE: 07-24-15

SHEET TITLE:
 SECURITY PLAN

SHEET NUMBER:
 C170

