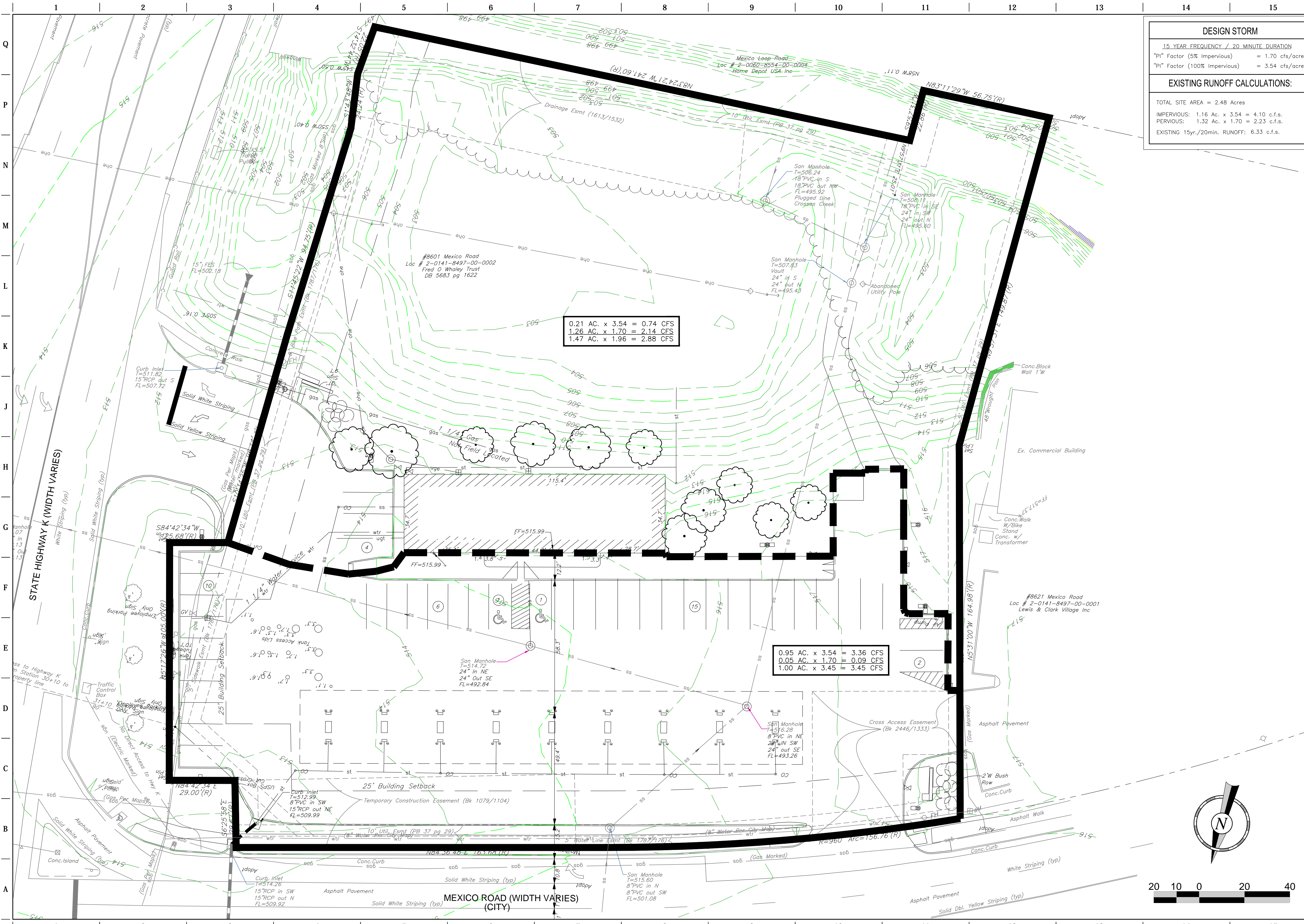


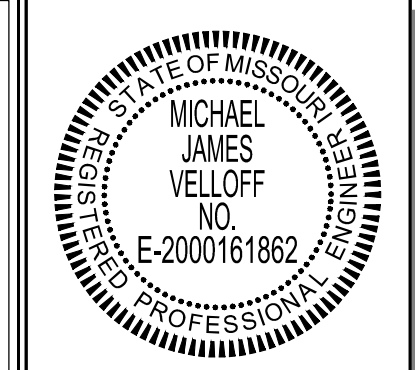
FILE LOCATION: K:\141029 - QuikTrip #0643 Mexico and Highway K (Civil) - 0643 Civil.dwg USER: rjfrayer SAVED: 12/15/2015 2:57 PM PLOTTED: 12/16/2015 8:20 AM



DESIGN STORM	
15 YEAR FREQUENCY / 20 MINUTE DURATION	
"Pi" Factor (5% Impervious)	= 1.70 cfs/acre
"Pi" Factor (100% Impervious)	= 3.54 cfs/acre
EXISTING RUNOFF CALCULATIONS:	
TOTAL SITE AREA = 2.48 Acres	
IMPERVIOUS: 1.16 Ac. x 3.54	= 4.10 c.f.s.
PERVIOUS: 1.32 Ac. x 1.70	= 2.23 c.f.s.
EXISTING 15yr./20min. RUNOFF:	6.33 c.f.s.

0.21 AC. x 3.54 = 0.74 CFS  
 1.26 AC. x 1.70 = 2.14 CFS  
 1.47 AC. x 1.96 = 2.88 CFS

0.95 AC. x 3.54 = 3.36 CFS  
 0.05 AC. x 1.70 = 0.09 CFS  
 1.00 AC. x 3.45 = 3.45 CFS



PROJECT NO.: 141029  
 NAME: MICHAEL J. VELLOFF  
 LICENSE NUMBER: E-2000161862  
 DISCIPLINE: CIVIL  
 CORPORATION AUTHORITY NUMBER: 001194

THE SEAL OF MICHAEL J. VELLOFF ON THIS DRAWING APPLIES ONLY TO THE CIVIL SITE ENGINEERING SHOWN. IT DOES NOT APPLY, NOR IS ANY RESPONSIBILITY TAKEN FOR ENVIRONMENTAL, GEOTECHNICAL (INCLUDING BUT NOT LIMITED TO SLOPE STABILITY), STRUCTURAL, HVAC, PLUMBING, ELECTRICAL, FIRE PROTECTION, TRAFFIC ENGINEERING, SURVEYING (BOUNDARY AND TOPOGRAPHIC), OR ARCHITECTURAL (BUILDING OR LANDSCAPE).

**QuikTrip No. 0643S**  
 8601 Mexico Road  
 O'Fallon, Missouri 63366



NO PART OF THIS DRAWING OR ANY INFORMATION HEREON, REPRODUCTION, PUBLICATION, DISTRIBUTION, OR SALE IN WHOLE OR IN PART, IS STRICTLY FORBIDDEN.

PROTOTYPE:	P-83
DIVISION:	06
VERSION:	001
DESIGNED BY:	RAF
DRAWN BY:	RAF
REVIEWED BY:	MJV

REV	DATE	DESCRIPTION

SHEET TITLE:  
 PRE-DEVELOPED DRAINAGE MAP

SHEET NUMBER:  
**C400**

