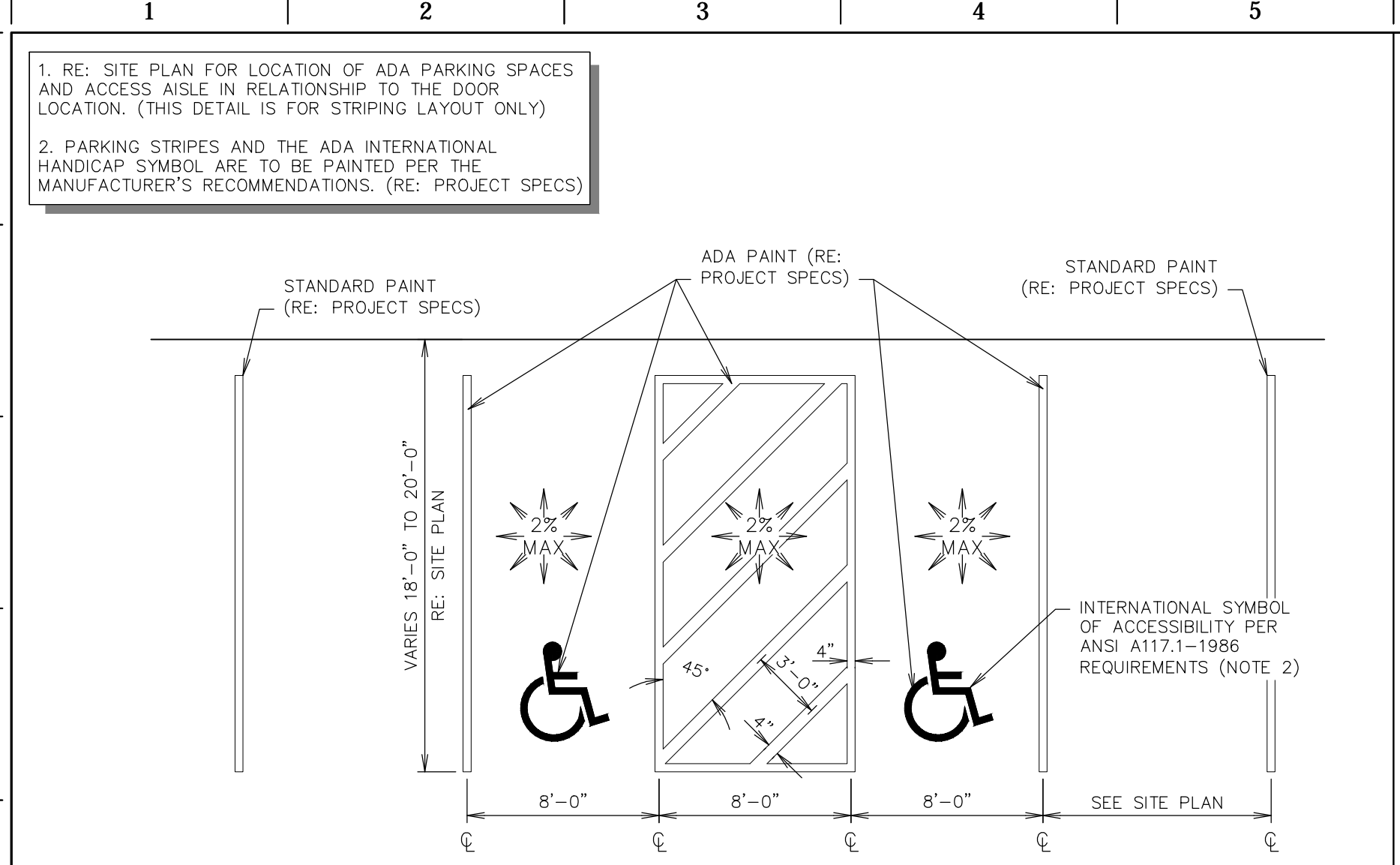
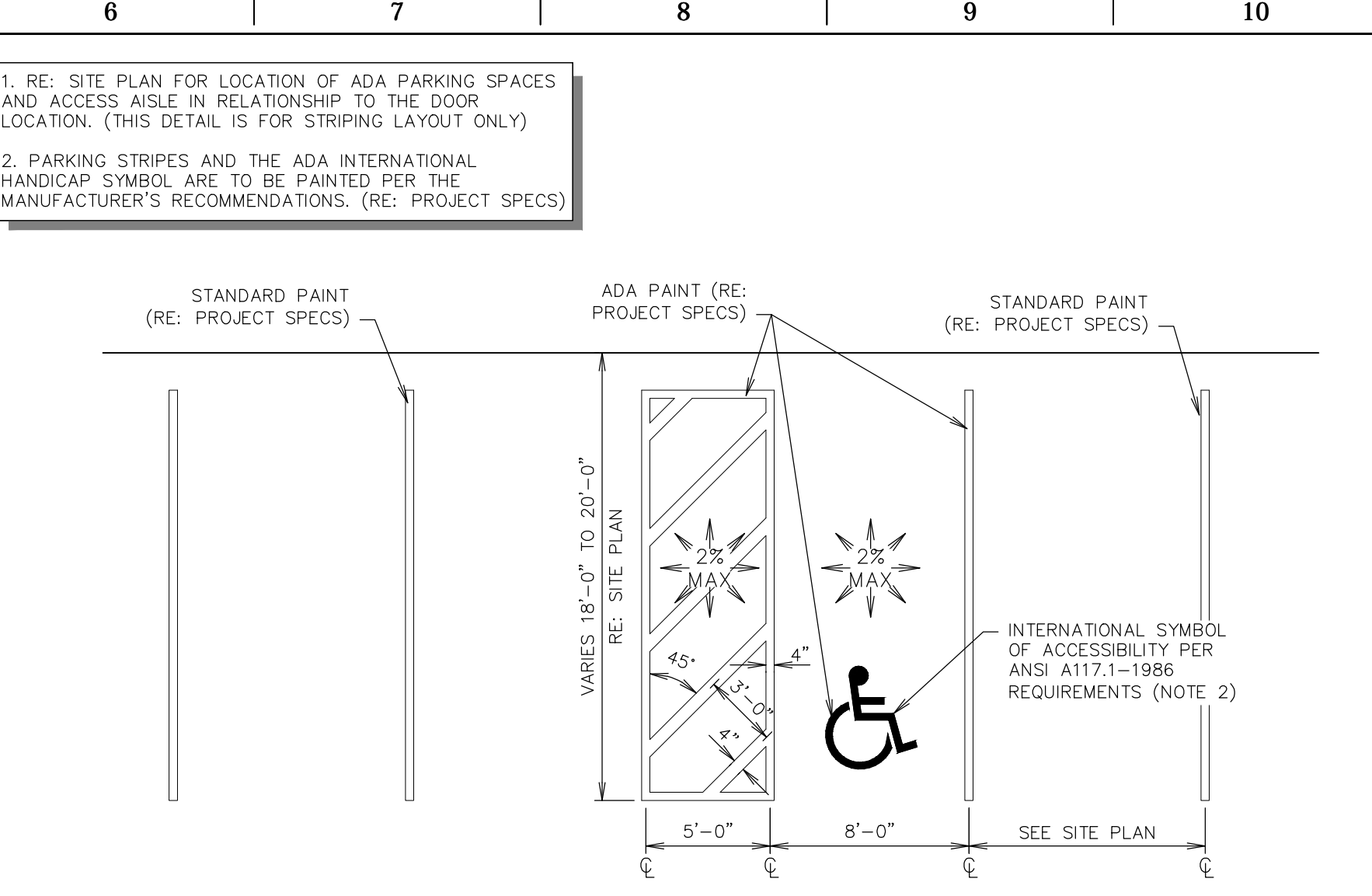


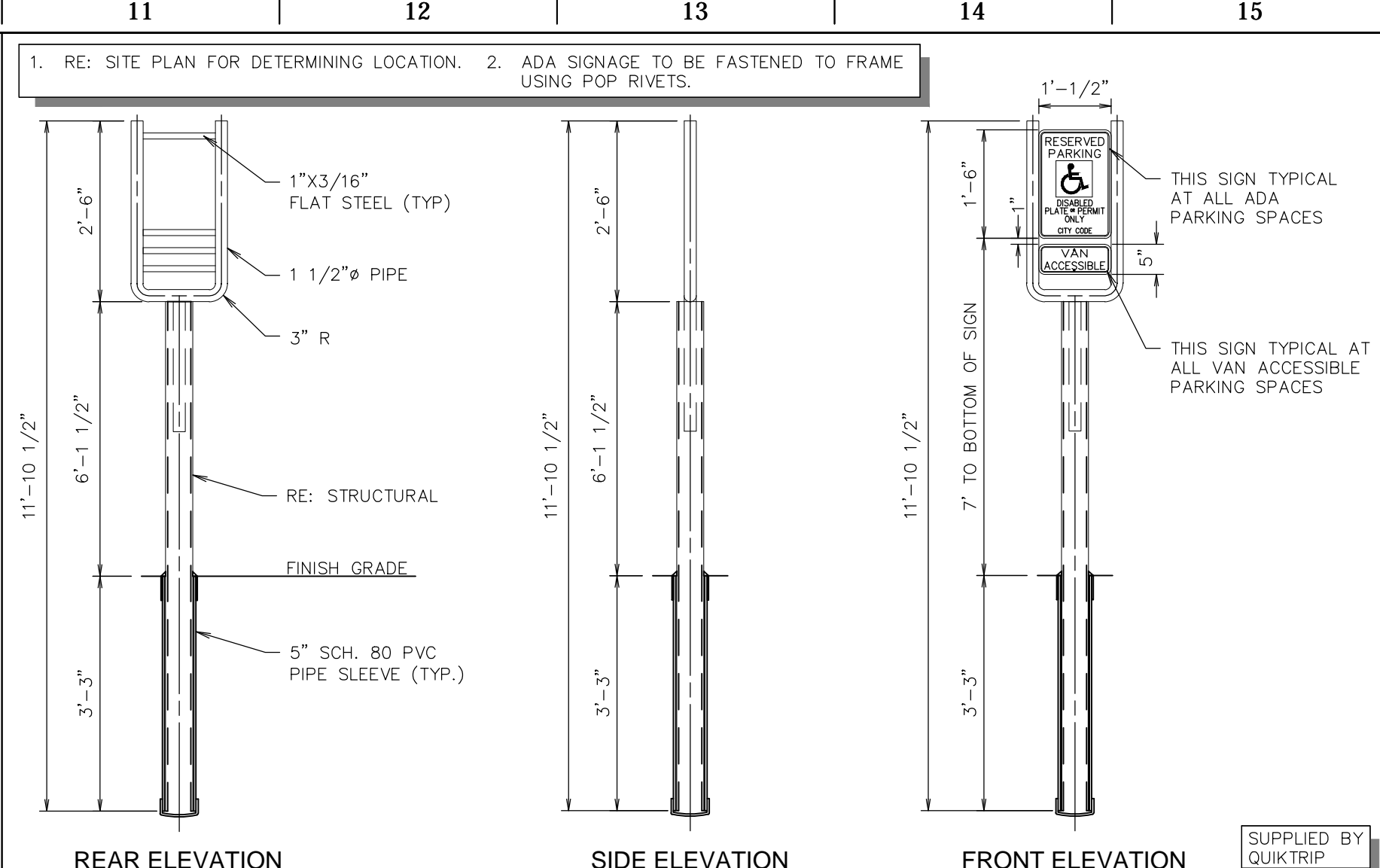
FILE LOCATION: K:\141029 - QuikTrip #0643 Mexico and Highway K\Civil\06-0643 DETAILS ADA.dwg TAB NAME: ADA Detail Sheet 1 USER: rkr/ryer SWED:10/16/2015 6:17 AM PLOTTED:12/16/2015 8:05 AM



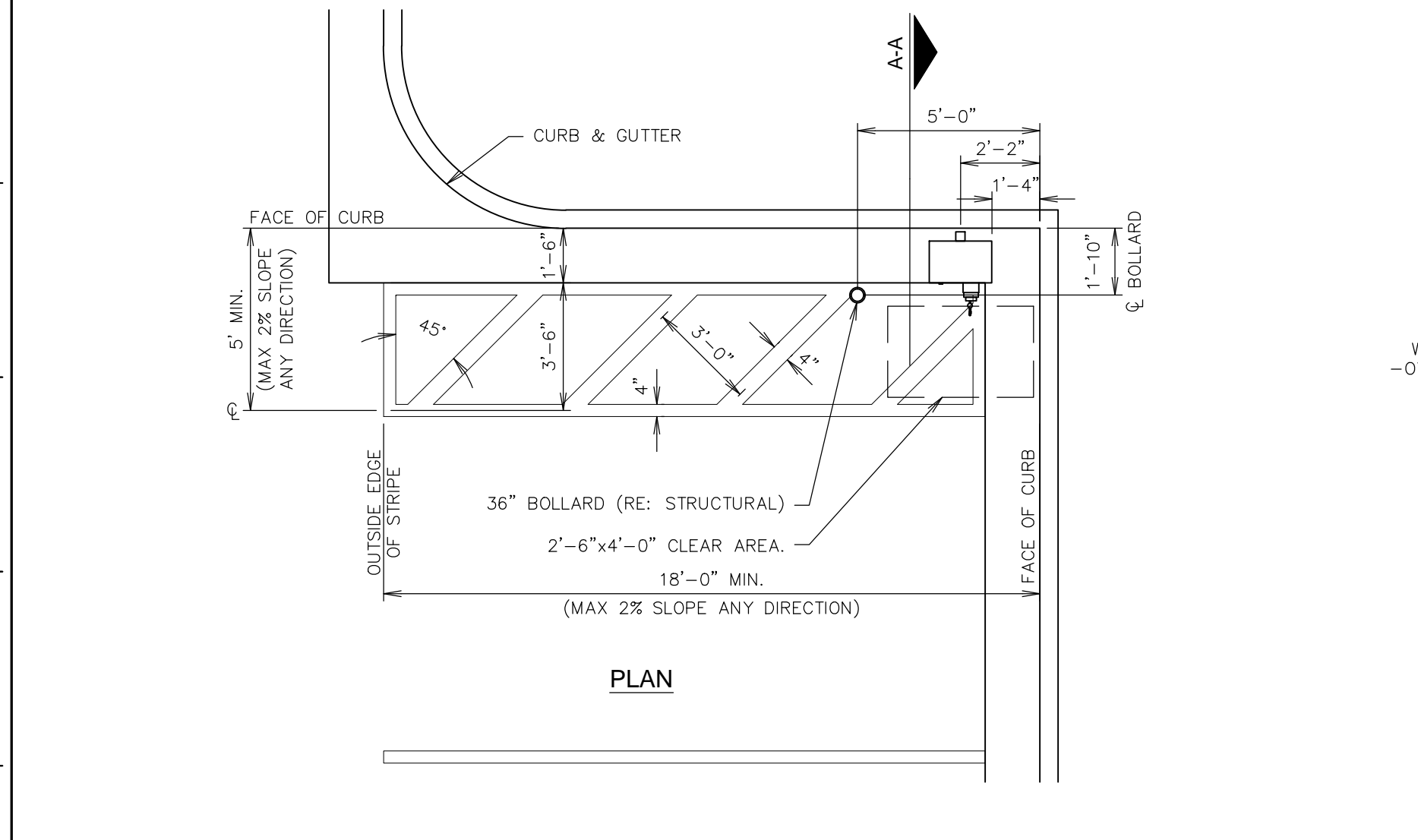
L1 DOUBLE STALL ADA PARKING STRIPING DETAIL
NTS SN: AD001A008



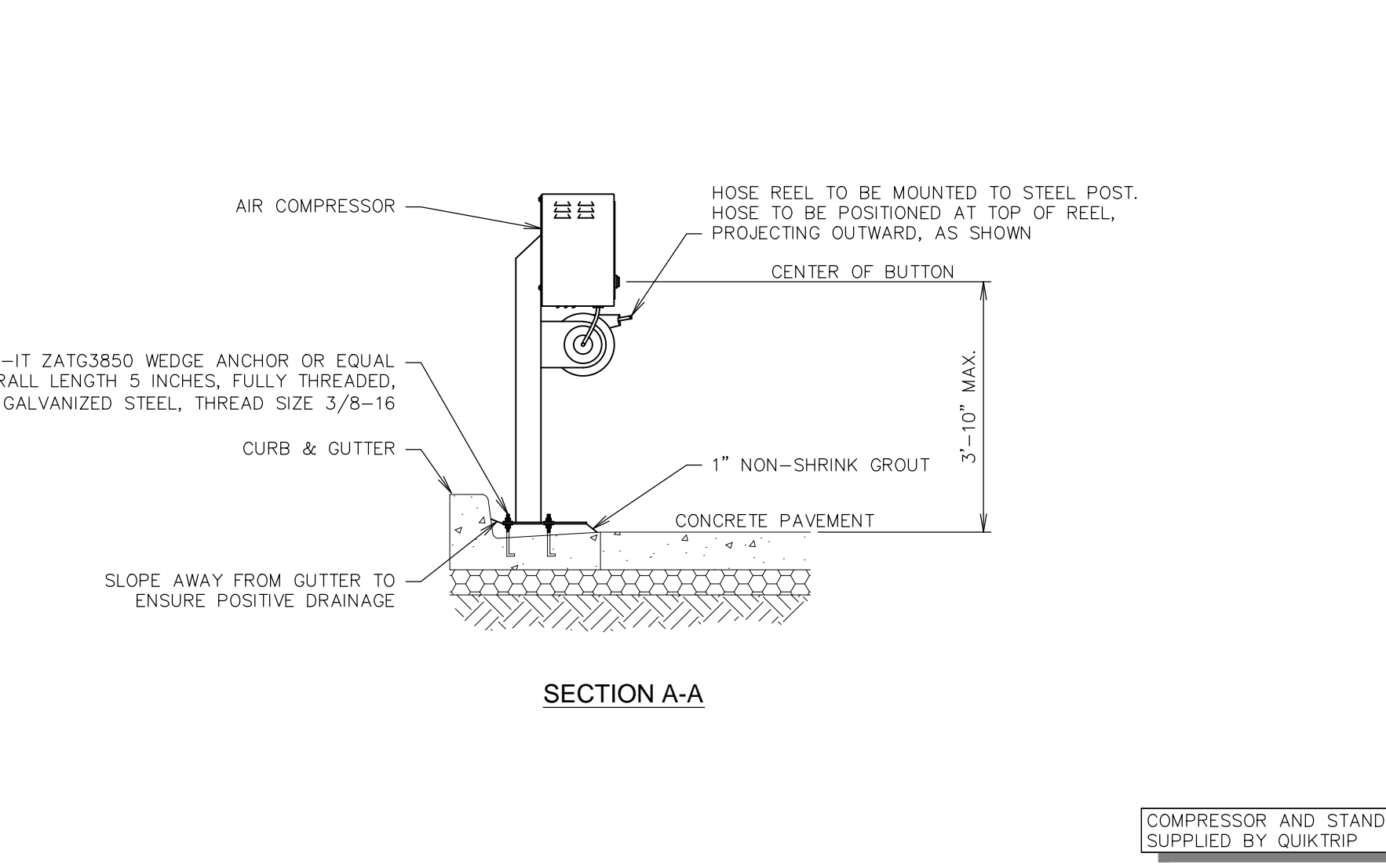
L6 SINGLE STALL ADA PARKING STRIPING DETAIL
NTS SN: AD002A008



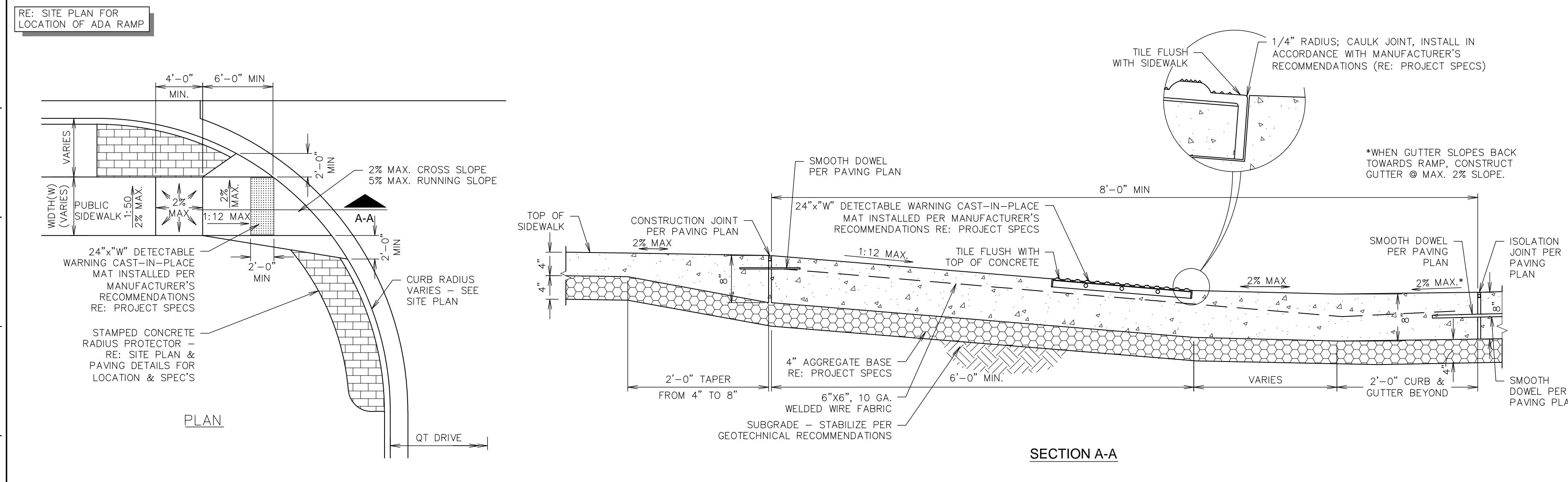
L11 ADA SIGN IN BOLLARD
NTS SN: AD003C006



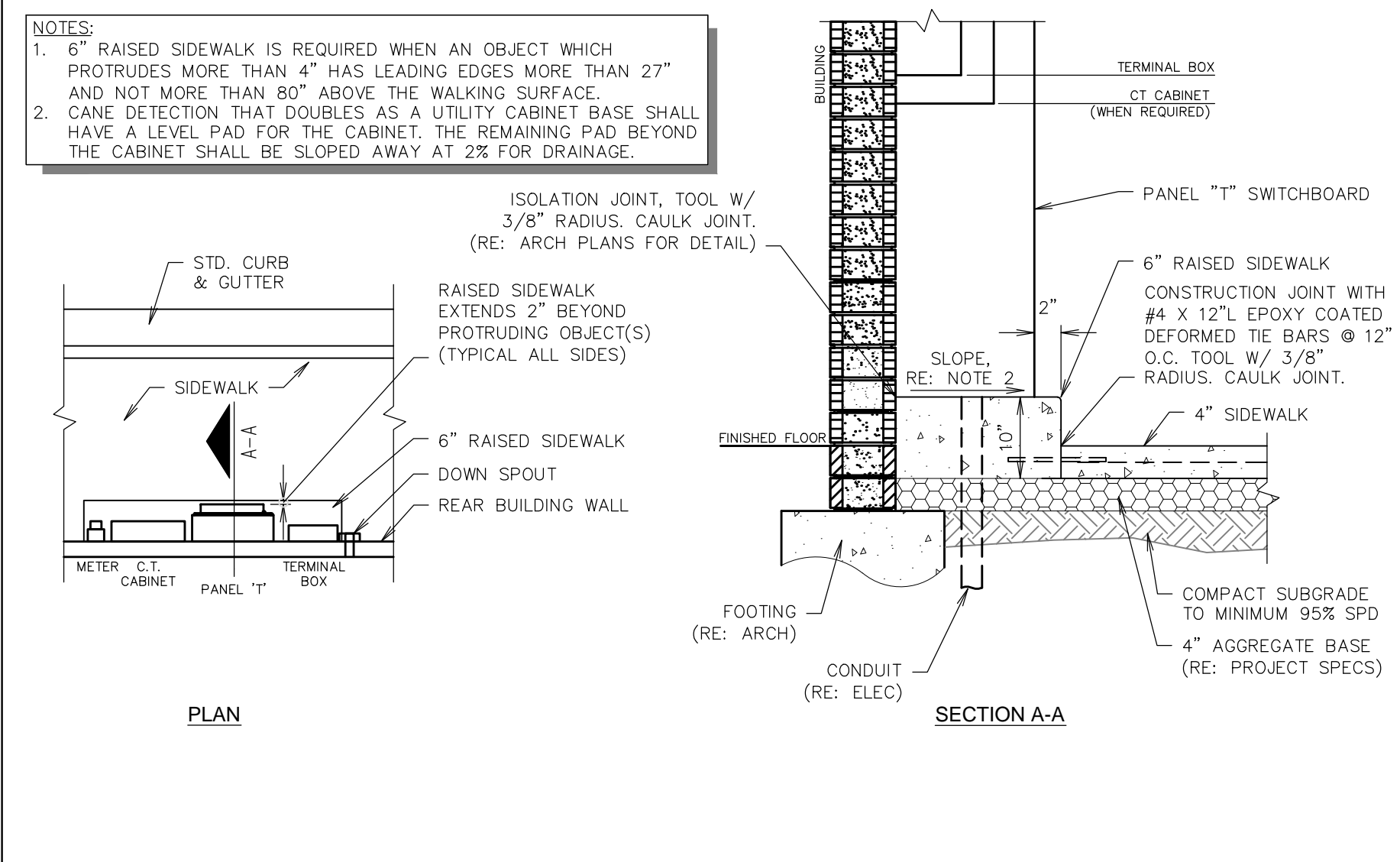
F1 AIR SERVICE INSTALL PLAN (LEFT HAND INSTALL)
NTS SN: AD004B008



F11 RAMP - CURB TRANSITION PAINTING DETAIL
NTS SN: AD015A002



A1 ADA ACCESS RAMP AT DRIVE
NTS SN: AD006A005



A11 CANE DETECTION FOR PROTRUDING OBJECTS
NTS SN: AD014A003

PROJECT NO.: 141029
NAME: MICHAEL J. VELLOFF
LICENSE NUMBER: E-2000161862
DISCIPLINE: CIVIL
CORPORATION AUTHORITY NUMBER: 00184

THE SEAL OF MICHAEL J. VELLOFF ON THIS DRAWING APPLIES ONLY TO THE CIVIL/SITE ENGINEERING SHOWN. IT DOES NOT APPLY, NOR IS ANY RESPONSIBILITY TAKEN FOR ENVIRONMENTAL, GEOTECHNICAL (INCLUDING BUT NOT LIMITED TO SLOPE STABILITY), STRUCTURAL, HVAC, PLUMBING, ELECTRICAL, FIRE PROTECTION, TRAFFIC ENGINEERING, SURVEYING (BOUNDARY AND TOPOGRAPHIC), OR ARCHITECTURAL (BUILDING OR LANDSCAPE).

QuikTrip No. 0643S
8601 Mexico Road
O'Fallon, Missouri 63366

PROTOTYPE: P-83
DIVISION: 06
VERSION: 001
DESIGNED BY: RKF
DRAWN BY: RKF
REVIEWED BY: MJV

REV	DATE	DESCRIPTION

SHEET TITLE:
ADA DETAILS

SHEET NUMBER:
C510

ORIGINAL ISSUE DATE: 07-24-15