



QuikTrip.

2255 Bluestone Drive
St. Charles, MO 63303
(636) 916-5706

GENERAL NOTES

1. THE UNDERGROUND UTILITIES SHOWN HEREIN WERE PLOTTED FROM AVAILABLE INFORMATION AND DO NOT NECESSARILY REFLECT THE ACTUAL EXISTENCE, NONEXISTENCE, SIZE, TYPE, NUMBER, OR LOCATION OF THESE OR OTHER UTILITIES. THE GENERAL CONTRACTOR SHALL BE RESPONSIBLE FOR VERIFYING THE ACTUAL LOCATION IN THE FIELD PRIOR TO ANY GRADING, EXCAVATION OR CONSTRUCTION OF ANY IMPROVEMENTS. THESE PROVISIONS SHALL IN NO WAY ABSOLVE ANY PARTY FROM COMPLYING WITH THE UNDERGROUND FACILITY SAFETY AND DAMAGE PREVENTION ACT CHAPTER 319.RSMo.

DEMOLITION ITEM CONSIDERATIONS

PAVEMENT
MATERIAL & THICKNESS: ASPHALT (ASSUMED 8")
QUANTITY (S.F.): 6985

CURBING
MATERIAL: CONCRETE
QUANTITY (L.F.): 127

MATERIAL: ASPHALT
QUANTITY (L.F.): 606

SIDEWALK
MATERIAL & THICKNESS: CONCRETE (ASSUMED 4")
QUANTITY (S.F.): 594.5

SEWER
MATERIAL & SIZE: 12" RCP
QUANTITY (L.F.): 163
CURB INLET
DOUBLE CATCH BASIN

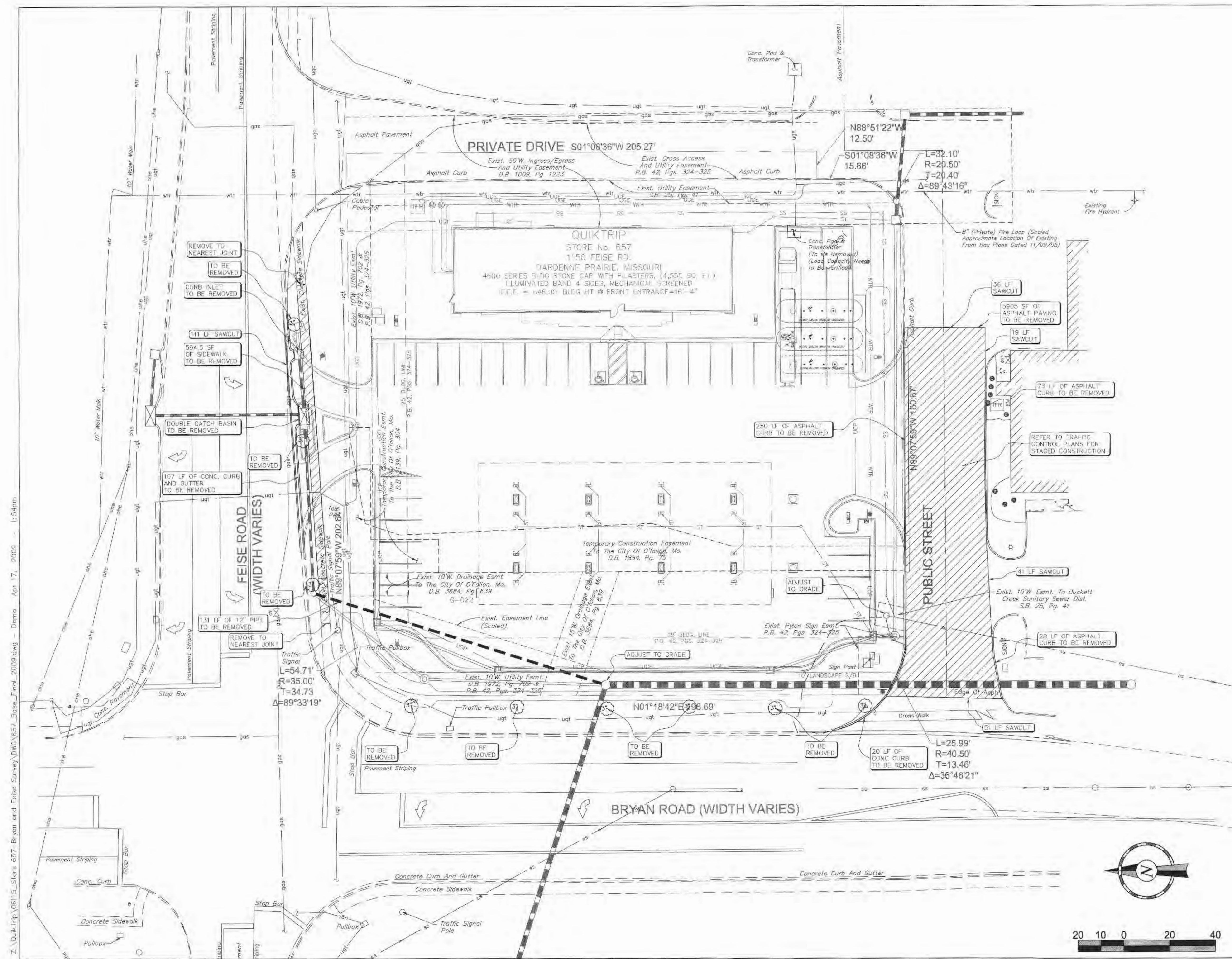
© COPYRIGHT
1996 QUIKTRIP CORPORATION
DESIGN PATENT'S
QUIKTRIP PLANS ARE THE EXCLUSIVE PROPERTY OF QUIKTRIP CORPORATION, FLESA, OKLAHOMA. THESE PLANS ARE PROTECTED BY THEIR EXISTING PATENT, TRADEMARK AND INTERNATIONAL COPYRIGHT AND PATENT STATUTES, ANY UNAUTHORIZED USE, REPRODUCTION, PUBLICATION, DISTRIBUTION OR SALE IN WHOLE OR IN PART, IS STRICTLY FORBIDDEN.

No.	Revision	Date
3	OWNER REVISIONS	3/24/09
2	CITY COMMENTS	12/18/07
1	CITY COMMENTS	9/20/07

EFK•Moen, LLC
Civil Engineering Design
13523 Barrett Parkway Dr. Suite 250
St. Louis, MO 63021
Phone (314)729-4100 Fax (314)729-4199

DEMOLITION PLAN

DRAWN BY: JAA	SHEET
DESIGNED BY: CDL	3
CHECKED BY: PKJ	OF
ISSUE DATE: Apr 17, 2009	27



Z:\QuikTrip\06115_Store 657-Bryan and Feise Survey\DWG\657_Base_Final_2009.dwg - Domo Apr 17, 2009 - 1:54pm

QuikTrip Store No. : 657 1150 FEISE ROAD DARDENNE PRAIRIE, MISSOURI