

GRADING AND DRAINAGE LEGEND

- ST STORM PIPE (10" AND SMALLER)
- STORM PIPE (12" AND LARGER)
- 4:1 SLOPE RATIO (RUN:RISE)
- 640 MAJOR CONTOUR (NEW)
- 630 MINOR CONTOUR (NEW)
- 640 MAJOR CONTOUR (EXISTING)
- 630 MINOR CONTOUR (EXISTING)
- SPOT ELEVATION (NEW)
- SPOT ELEVATION (EXISTING)
- TOP OF ISLAND
- FINISHED GRADE
- STORM GRATE (NEW)
- ALTERNATE SUB-BASE
- UCP UNDER CURB DRAIN

QuikTrip
 2255 Bluestone Drive
 St. Charles, MO 63303
 (636) 916-5706

GENERAL NOTES

1. THE UNDERGROUND UTILITIES SHOWN HEREIN WERE PLOTTED FROM AVAILABLE INFORMATION AND DO NOT NECESSARILY REFLECT THE ACTUAL EXISTENCE, NONEXISTENCE, SIZE, TYPE, NUMBER, OR LOCATION OF THESE OR OTHER UTILITIES. THE GENERAL CONTRACTOR SHALL BE RESPONSIBLE FOR VERIFYING THE ACTUAL LOCATION IN THE FIELD PRIOR TO ANY CHANGING, EXCAVATION OR CONSTRUCTION OF ANY IMPROVEMENTS. THESE PROVISIONS SHALL IN NO WAY ABSOLVE ANY PARTY FROM COMPLYING WITH THE UNDERGROUND FACILITY SAFETY AND DAMAGE PREVENTION ACT CHAPTER 319.RSMo.
2. GAS CANOPY INSTALLER SHALL INSTALL THE CANOPY COLUMN DRAIN PIPE AND OVERFLOW FITTING. THE STORM WATER INSTALLER SHALL CONNECT THEIR PIPING TO THE GAS INSTALLER'S OVERFLOW FITTING.
3. TO AVOID ANY DEFINED CRESTS OR SUMPS, "GRADE BREAKS" SHALL BE CONSTRUCTED AS A "VERTICAL CURVE". SURVEYOR & CONTRACTOR SHALL CONFER WITH QUIKTRIP CONSTRUCTION MANAGER PRIOR TO CONSTRUCTION STAKING OR CONCRETE PLACEMENT RELATIVE TO ANY GRADE BREAKS.
4. PRIOR TO INSTALLING ALL PROPOSED DRAINAGE STRUCTURES, CONTRACTOR MUST VERIFY FLOWLINES OF ALL EXISTING SEWERS.

ACTIVITY	DATE
STRIPPING AND CLEARING	WEEK 1
AFTER CHANGES IN DRAINAGE COURSES	WEEK 2
CONSTRUCTION OF UNDERGROUND INFRASTRUCTURE	WEEK 5
CONSTRUCTION OF STRUCTURES, SUCH AS BUILDINGS, PAVEMENT, RETAINING WALLS	WEEK 5
FINAL GRADING	WEEK 21
LANDSCAPING	WEEK 22

NOTE: SCHEDULE HAS BEEN SUPPLIED FOR CITY USE ONLY. ANTICIPATED CONSTRUCTION START DATE HAS NOT BEEN DETERMINED AT THIS TIME. A MORE ACCURATE CONSTRUCTION SCHEDULE CAN BE FORWARDED TO THE CITY ONCE A CONTRACTOR HAS BEEN SELECTED.

© COPYRIGHT 1988 QUIKTRIP CORPORATION
 DESIGN PARTNERS

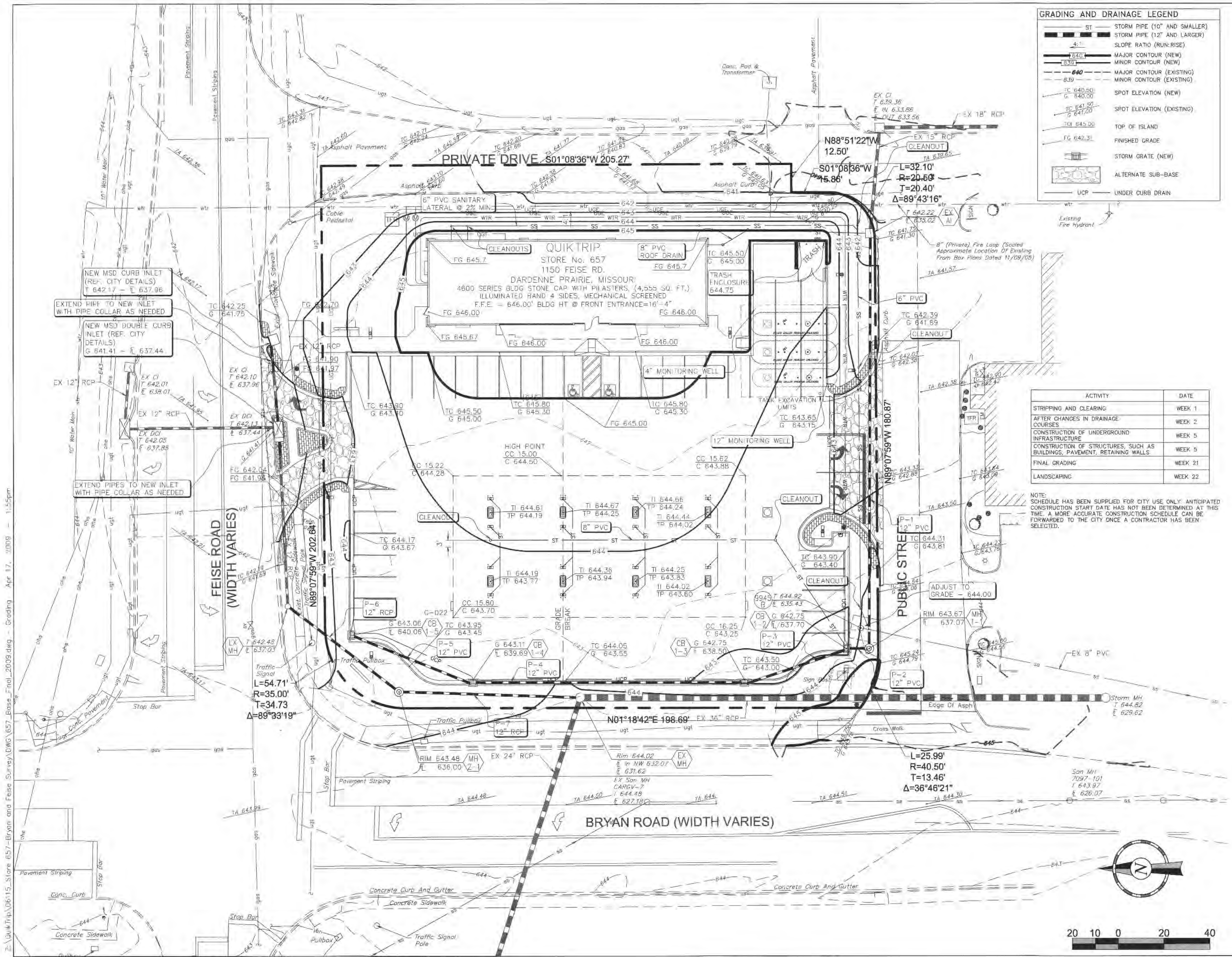
QUIKTRIP PLANS ARE THE EXCLUSIVE PROPERTY OF QUIKTRIP CORPORATION, FLSA, OLA/DOMA. THESE PLANS ARE PREPARED BY THEIR EMPLOYEES BY DOMESTIC AND INTERNATIONAL COPYRIGHT AND PATENT STATUTES. ANY UNAUTHORIZED USE, REPRODUCTION, PUBLICATION, DISTRIBUTION OR SALE IN WHOLE OR IN PART, IS STRICTLY FORBIDDEN.

No.	Revision	Date
3	OWNER REVISIONS	3/24/09
2	CITY COMMENTS	12/18/07
1	CITY COMMENTS	9/20/07

EFK•Moen, LLC
 Civil Engineering Design
 13523 Barrett Parkway Dr. Suite 250
 St. Louis, MO 63021
 Phone (314)729-4100 Fax (314)729-4199

GRADING PLAN

DRAWN BY: JAA	SHEET
DESIGNED BY: CDL	5
CHECKED BY: PUK	
ISSUE DATE: Apr 17, 2009	
of 7/	



Z:\QuikTrip\0615_Store 657-Bryon and Feise Survey\DWG\657_Base_Final_2009.dwg - Grading - Apr 17, 2009 - 1:55pm

DARDENNE PRAIRIE, MISSOURI
 1150 FEISE ROAD
 QuikTrip Store No. : 657

