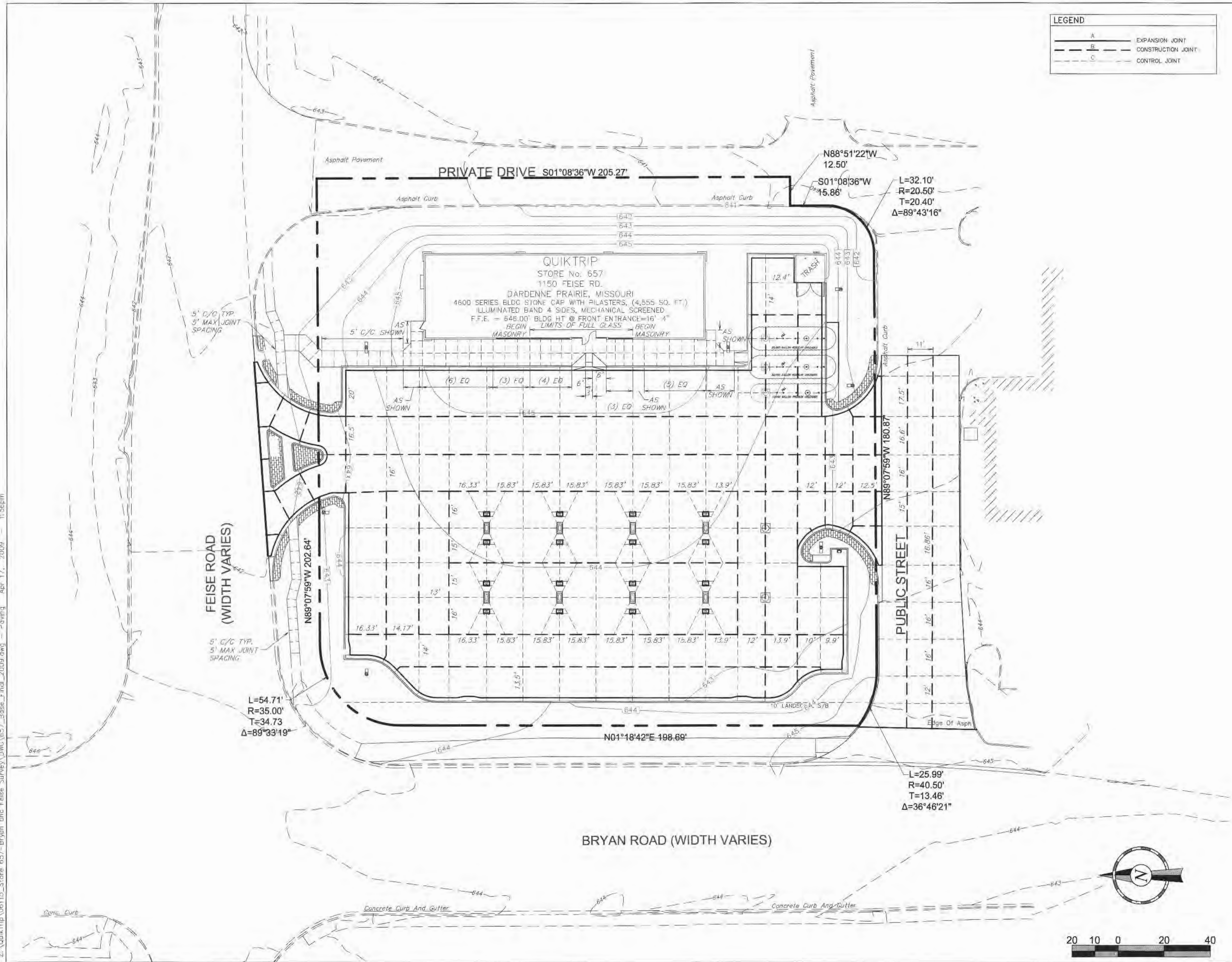


Z:\QuikTrip\06115_Store 657-Bryan and Feise_Survey\DWG\657_Base_Final_2009.dwg - Paving Apr 17, 2009 1:56pm



LEGEND

A	EXPANSION JOINT
B	CONSTRUCTION JOINT
C	CONTROL JOINT



GENERAL NOTES

1. CURBS ARE SCORED IN 10' LENGTHS.
2. SIDEWALKS AND ALL PAVING TO RECEIVE A MEDIUM BROOM FINISH. A QUIKTRIP REPRESENTATIVE SHALL BE PRESENT WHEN CONTRACTOR IS FINISHING CONCRETE TO DETERMINE CORRECT FINISH TEXTURE.

© COPYRIGHT
1998 QUIKTRIP CORPORATION
DESIGN PATENTS
QUIKTRIP PLANS ARE THE EXCLUSIVE PROPERTY OF QUIKTRIP CORPORATION, TULSA, OKLAHOMA. THESE PLANS ARE PROTECTED IN THEIR ENTIRETY BY DOMESTIC AND INTERNATIONAL COPYRIGHT AND PATENT STATUTES. ANY UNAUTHORIZED USE, REPRODUCTION, PUBLICATION, DISTRIBUTION OR SALE IN WHOLE OR IN PART, IS STRICTLY FORBIDDEN.

No.	Revision	Date
3	OWNER REVISIONS	3/24/09
2	CITY COMMENTS	12/18/07
1	CITY COMMENTS	8/20/07

EFK•Moen, LLC
Civil Engineering Design
13523 Barrett Parkway Dr. Suite 250
St. Louis, MO 63021
Phone (314)729-4100 Fax (314)729-4199

PAVING PLAN

DRAWN BY: JAA	9
DESIGNED BY: CDL	
CHECKED BY: PJK	
ISSUE DATE: Apr 17, 2009	
SHEET OF 27	



DARDENNE PRAIRIE, MISSOURI

1150 FEISE ROAD

QuikTrip Store No. : 657