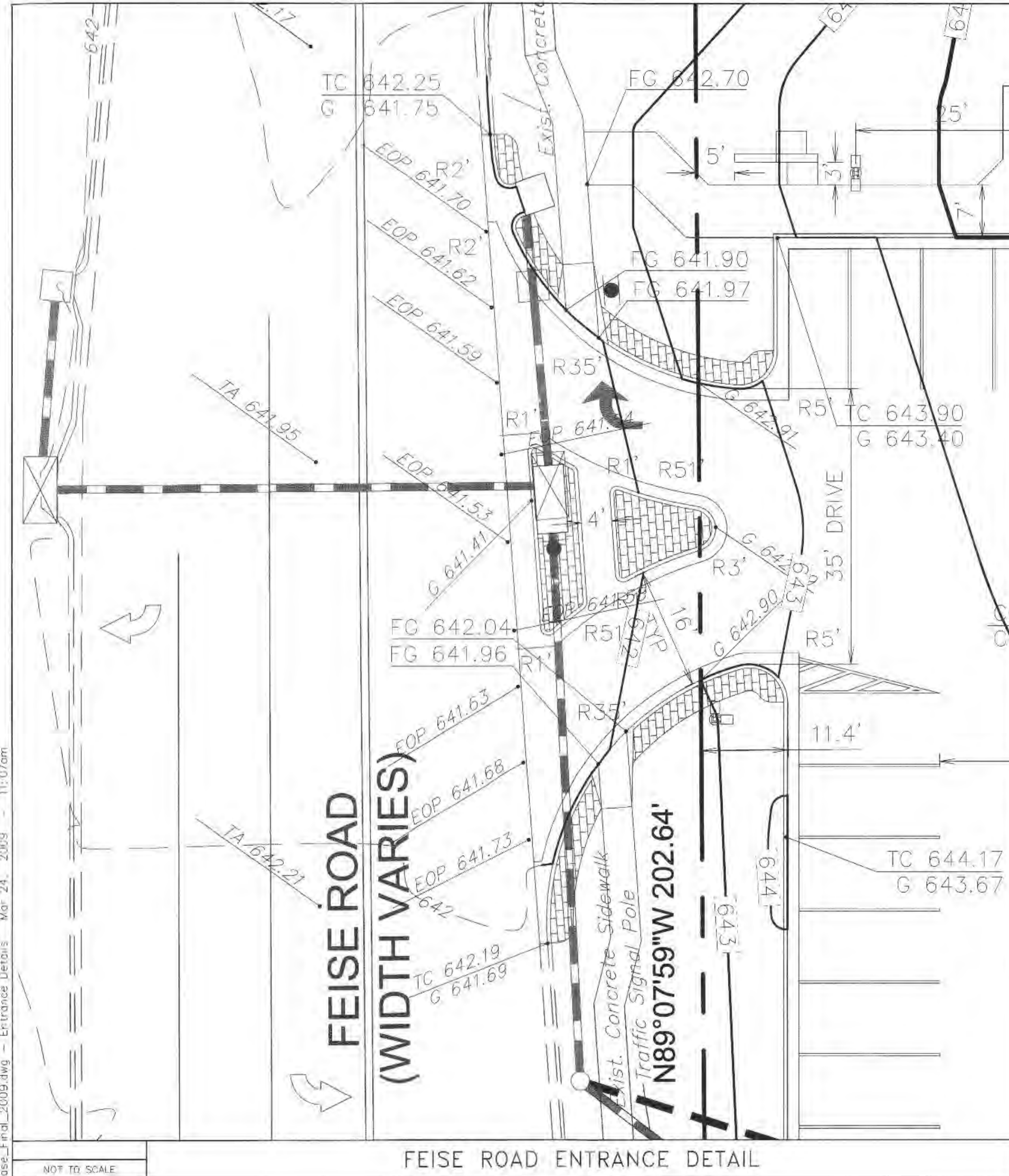
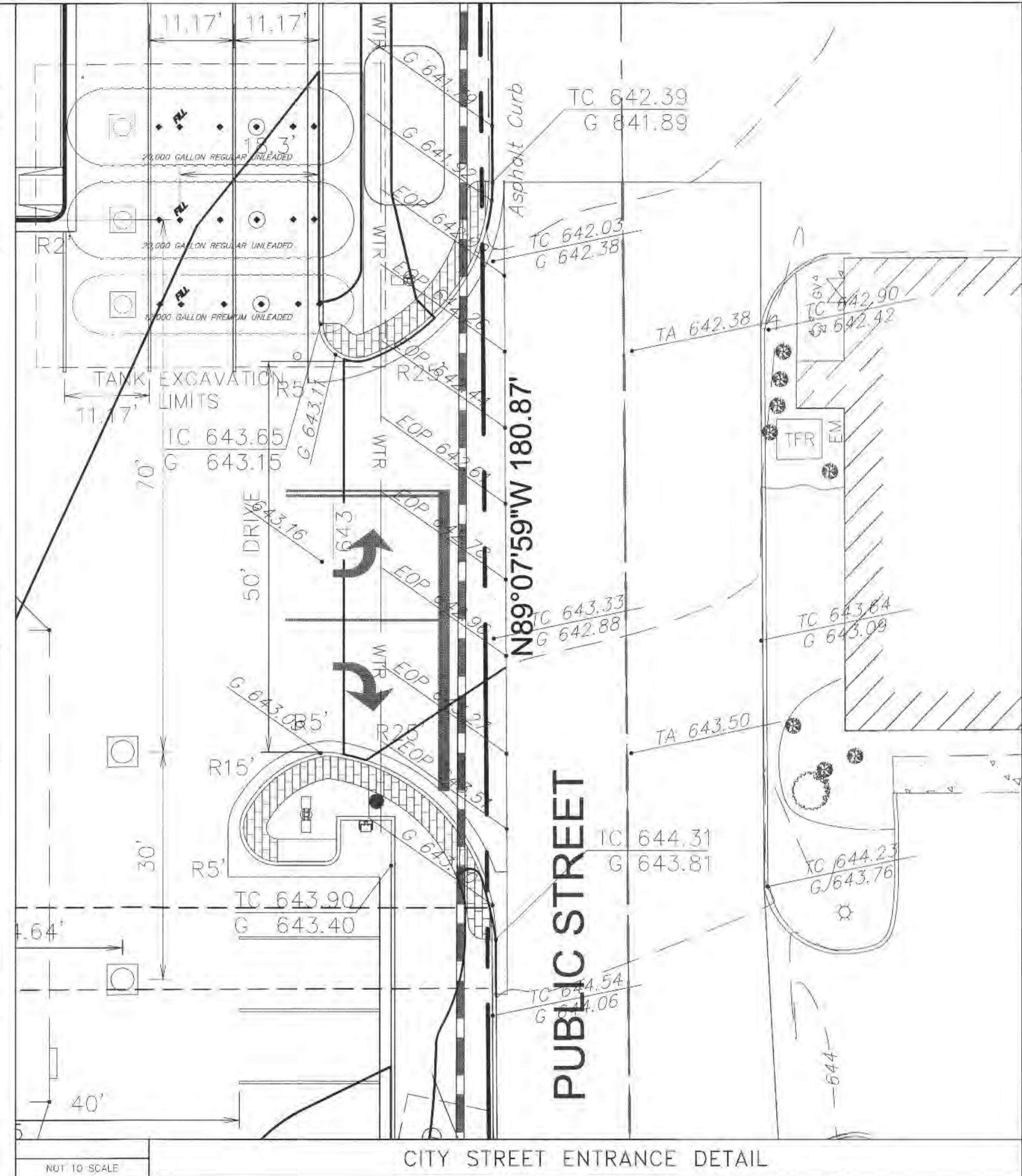


Z:\QuikTrip\06115_Store 657-Bryan and Feise Survey\DWG\657_Base_Final_2009.dwg - Entrance Details Mar 24, 2009 - 11:07am

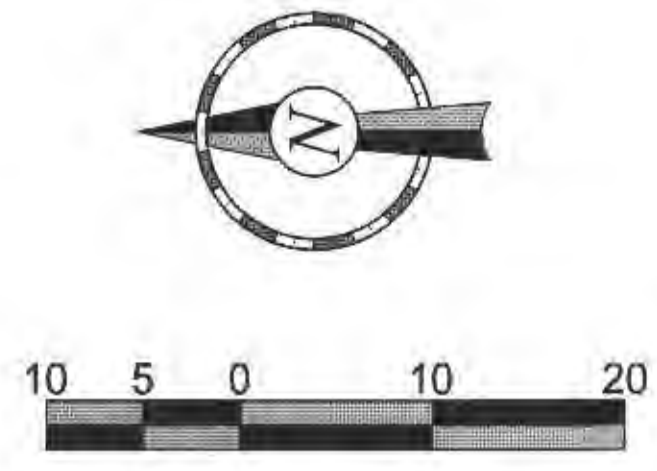


FEISE ROAD ENTRANCE DETAIL



CITY STREET ENTRANCE DETAIL

NOTE:
SEE DETAIL SHEET 24 FOR PAVEMENT DETAIL



GENERAL NOTES

© COPYRIGHT
1988 QUIKTRIP CORPORATION
DESIGN PATENTS
QUIKTRIP BRANDS ARE THE EXCLUSIVE PROPERTY OF QUIKTRIP CORPORATION, TULSA, OKLAHOMA. THESE BRANDS ARE PROTECTED BY THEIR PATENT RIGHTS AND INTERNATIONAL COPYRIGHT AND PATENT STATUTES. ANY UNAUTHORIZED USE, REPRODUCTION, PUBLICATION, DISTRIBUTION OR SALE IN WHOLE OR IN PART, IS STRICTLY FORBIDDEN.

No.	Revision	Date
3	OWNER REVISIONS	3/24/09
2	CITY COMMENTS	12/18/07
1	CITY COMMENTS	8/20/07

EFK♦Moen, LLC
Civil Engineering Design
13523 Barrett Parkway Dr. Suite 250
St. Louis, MO 63021
Phone (314)729-4100 Fax (314)729-4199

ENTRANCE DETAILS

DRAWN BY: JAA	19
DESIGNED BY: GDI	
CHECKED BY: PJK	
ISSUE DATE: Mar 24, 2009	
SHEET OF 27	

DARDENNE PRAIRIE, MISSOURI

1150 FEISE ROAD

QuikTrip Store No. : 657