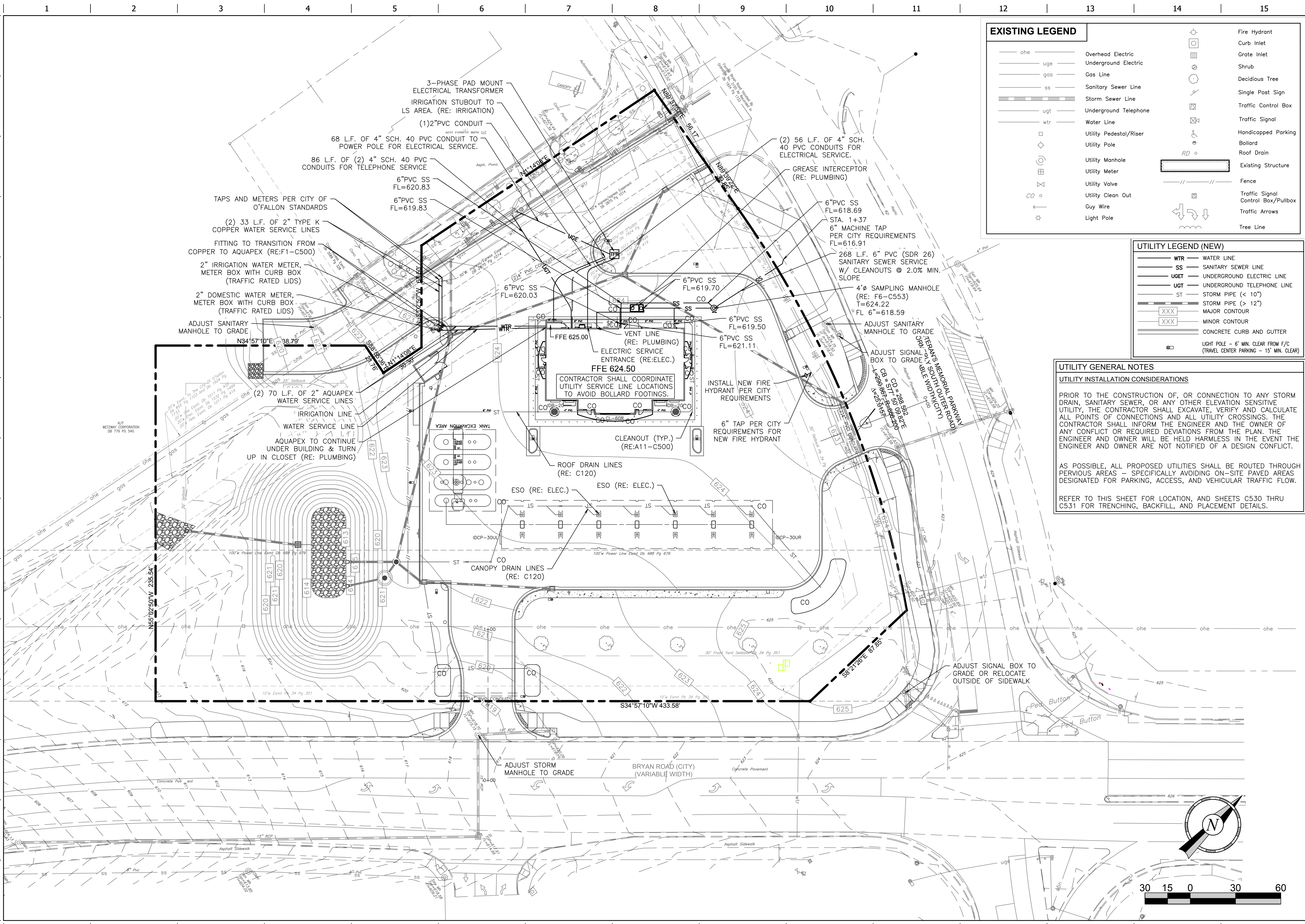


FILE LOCATION: \\16105 - QuikTrip #662 - Bryan Road and Veterans Memorial Parkway\Civil\06-0662\Civil.dwg TAB NAME: C150 Utility USER: rkrbyer SAVERD: 6/12/2018 11:52 AM PLOTTED: 6/12/2018 12:37 PM



EXISTING LEGEND

ohe	Overhead Electric	Fire Hydrant
uge	Underground Electric	Grate Inlet
gas	Gas Line	Grate Inlet
ss	Sanitary Sewer Line	Shrub
sgs	Storm Sewer Line	Deciduous Tree
ugt	Underground Telephone	Single Post Sign
wtr	Water Line	Traffic Control Box
UR	Utility Pedestal/Riser	Traffic Signal
UP	Utility Pole	Handicapped Parking
UM	Utility Manhole	Bollard
UV	Utility Valve	Roof Drain
UCO	Utility Clean Out	Existing Structure
GP	Guy Wire	Fence
LP	Light Pole	Traffic Signal Control Box/Pullbox
		Traffic Arrows
		Tree Line

UTILITY LEGEND (NEW)

WTR	WATER LINE
SS	SANITARY SEWER LINE
UGET	UNDERGROUND ELECTRIC LINE
UGT	UNDERGROUND TELEPHONE LINE
ST	STORM PIPE (< 10')
ST	STORM PIPE (> 12')
XXX	MAJOR CONTOUR
XXX	MINOR CONTOUR
	CONCRETE CURB AND GUTTER
	LIGHT POLE - 6' MIN. CLEAR FROM F/C (TRAVEL CENTER PARKING - 15' MIN. CLEAR)

UTILITY GENERAL NOTES

UTILITY INSTALLATION CONSIDERATIONS

PRIOR TO THE CONSTRUCTION OF, OR CONNECTION TO ANY STORM DRAIN, SANITARY SEWER, OR ANY OTHER ELEVATION SENSITIVE UTILITY, THE CONTRACTOR SHALL EXCAVATE, VERIFY AND CALCULATE ALL POINTS OF CONNECTIONS AND ALL UTILITY CROSSINGS. THE CONTRACTOR SHALL INFORM THE ENGINEER AND THE OWNER OF ANY CONFLICT OR REQUIRED DEVIATIONS FROM THE PLAN. THE ENGINEER AND OWNER WILL BE HELD HARMLESS IN THE EVENT THE ENGINEER AND OWNER ARE NOT NOTIFIED OF A DESIGN CONFLICT.

AS POSSIBLE, ALL PROPOSED UTILITIES SHALL BE ROUTED THROUGH PERVIOUS AREAS - SPECIFICALLY AVOIDING ON-SITE PAVED AREAS DESIGNATED FOR PARKING, ACCESS, AND VEHICULAR TRAFFIC FLOW.

REFER TO THIS SHEET FOR LOCATION, AND SHEETS C530 THRU C531 FOR TRENCHING, BACKFILL, AND PLACEMENT DETAILS.

PROJECT NO.: 161105

NAME: MICHAEL J. VELLOFF
 LICENSE NUMBER: E-2000161862
 DISCIPLINE: CIVIL
 CORPORATION AUTHORITY NUMBER: 001194

THE SEAL OF MICHAEL J. VELLOFF ON THIS DRAWING APPLIES ONLY TO THE CIVIL/SITE ENGINEERING SHOWN. IT DOES NOT APPLY, NOR IS ANY RESPONSIBILITY TAKEN FOR ENVIRONMENTAL, GEOTECHNICAL (INCLUDING BUT NOT LIMITED TO SLOPE STABILITY), STRUCTURAL, HVAC, PLUMBING, ELECTRICAL, FIRE PROTECTION, TRAFFIC ENGINEERING, SURVEYING (BOUNDARY AND TOPOGRAPHIC), OR ARCHITECTURAL (BUILDING OR LANDSCAPE).

QuikTrip No. 0662

955 BRYAN ROAD
 OFALLAN, MO 63366

QT

© COPYRIGHT QUIKTRIP CORPORATION 2011
 ANY UNAUTHORIZED USE, REPRODUCTION, PUBLICATION, DISTRIBUTION, OR SALE IN WHOLE OR IN PART, IS STRICTLY FORBIDDEN.

PROTOTYPE: P-94-01
 DIVISION: 06
 VERSION: 001
 DESIGNED BY: RKF
 DRAWN BY: RKF
 REVIEWED BY: MJV

REV	DATE	DESCRIPTION

ORIGINAL ISSUE DATE: 06/18/18

SHEET TITLE:
 UTILITY PLAN

SHEET NUMBER:
C150

