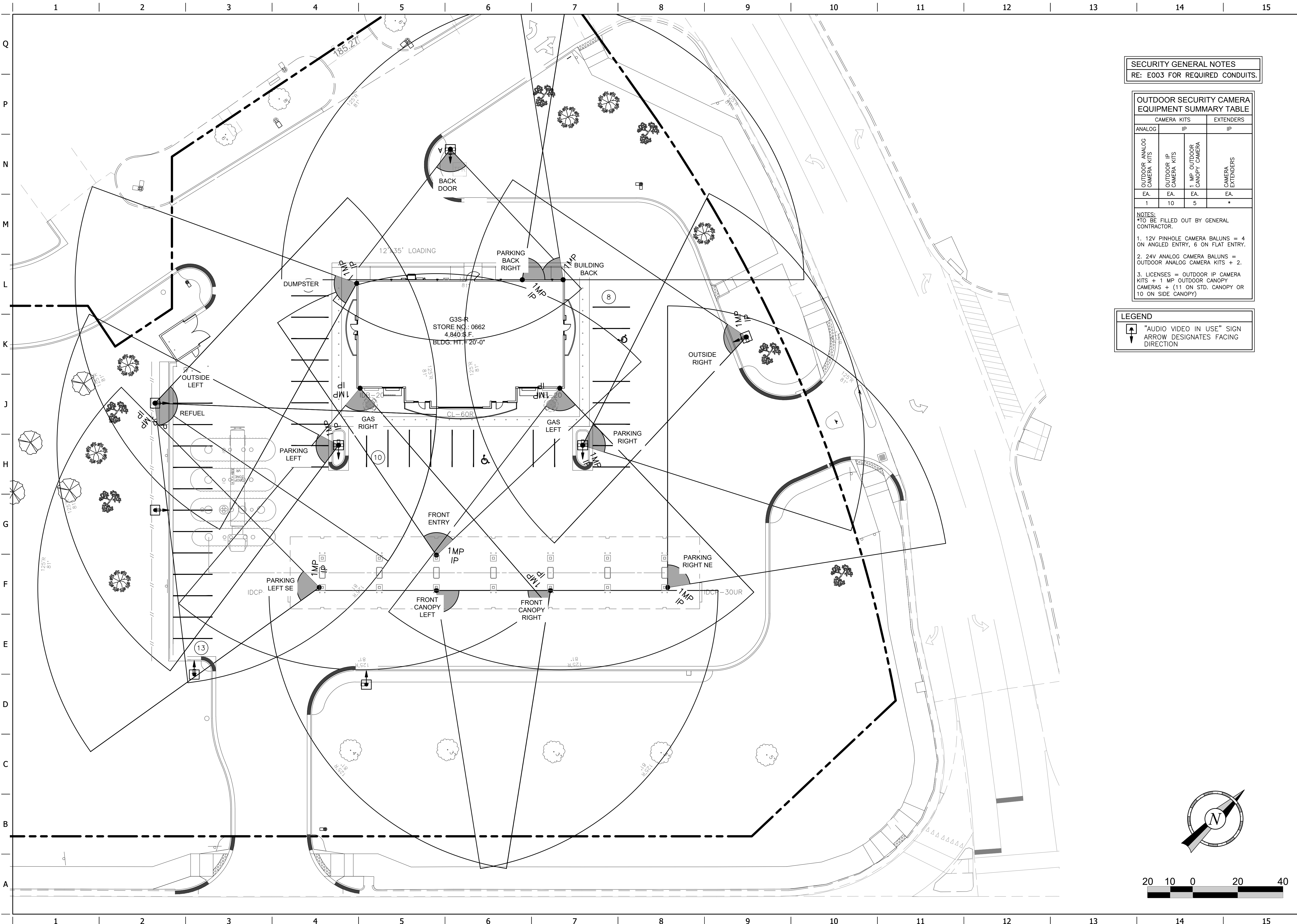


FILE LOCATION: C:\Work\06 St. Louis\06-0662\01 Civil\06-0662 Security.dwg TAB NAME: Security USER: choneye SAVED: 4/16/2018 11:07 AM PLOTTED: 4/16/2018 4:56 PM



SECURITY GENERAL NOTES
 RE: E003 FOR REQUIRED CONDUITS.

OUTDOOR SECURITY CAMERA EQUIPMENT SUMMARY TABLE

ANALOG	CAMERA KITS		EXTENDERS	
	OUTDOOR IP CAMERA KITS	1 MP OUTDOOR CANOPY CAMERA	1 MP IP CAMERA EXTENDERS	IP
EA.	EA.	EA.	EA.	EA.
1	10	5	*	

NOTES:
 *TO BE FILLED OUT BY GENERAL CONTRACTOR.

- 12V PINHOLE CAMERA BALUNS = 4 ON ANGLED ENTRY, 6 ON FLAT ENTRY.
- 24V ANALOG CAMERA BALUNS = OUTDOOR ANALOG CAMERA KITS + 2.
- LICENSES = OUTDOOR IP CAMERA KITS + 1 MP OUTDOOR CANOPY CAMERAS + (11 ON STD. CANOPY OR 10 ON SIDE CANOPY)

LEGEND

"AUDIO VIDEO IN USE" SIGN
 ARROW DESIGNATES FACING DIRECTION

PROJECT NO.:#####

QuikTrip No. 0662
 955 BRYAN RD
 O'FALLON, MO



© COPYRIGHT QUIKTRIP CORPORATION 2011
 ANY UNAUTHORIZED USE, REPRODUCTION, PUBLICATION, DISTRIBUTION, OR SALE IN WHOLE OR IN PART, IS STRICTLY FORBIDDEN.

PROTOTYPE: _____
 DIVISION: 06
 VERSION: 001
 DESIGNED BY: _____
 DRAWN BY: CTH
 REVIEWED BY: _____

REV	DATE	DESCRIPTION	ORIGINAL ISSUE DATE:

SHEET TITLE:

SECURITY SITE PLAN

SHEET NUMBER:

C170