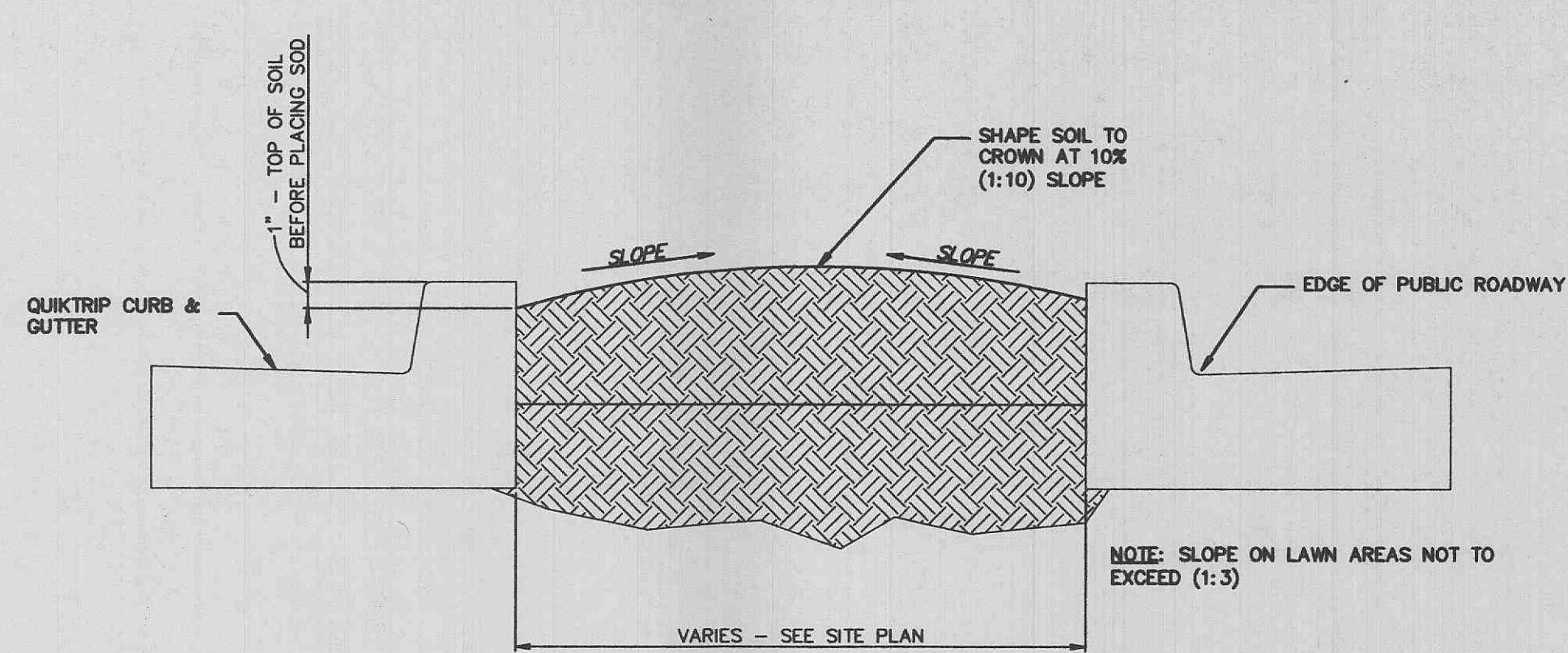


PAVING JOINT - CONTROL (TYPE C)

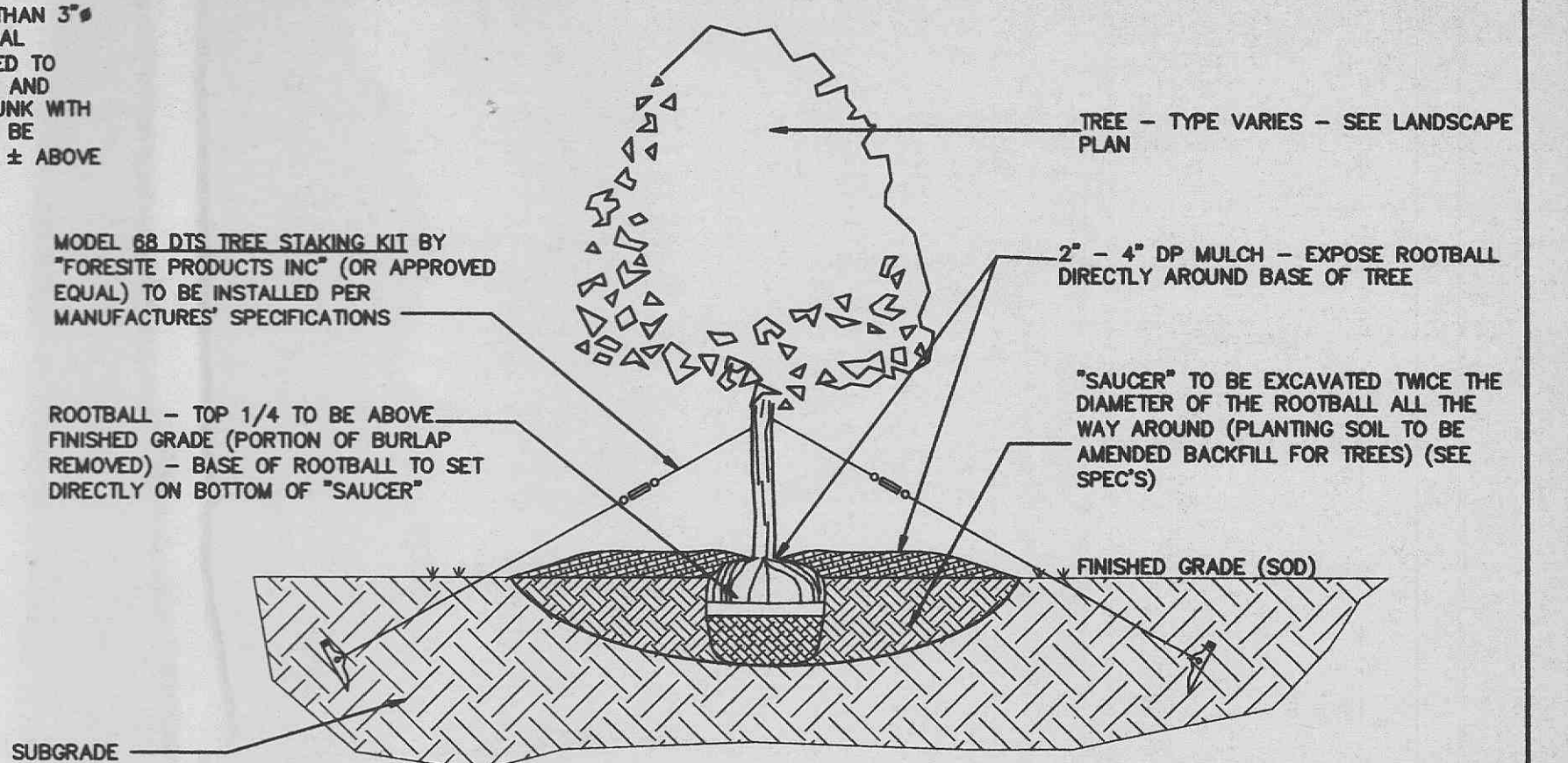
NO SCALE



TYPICAL LAWN SECTION

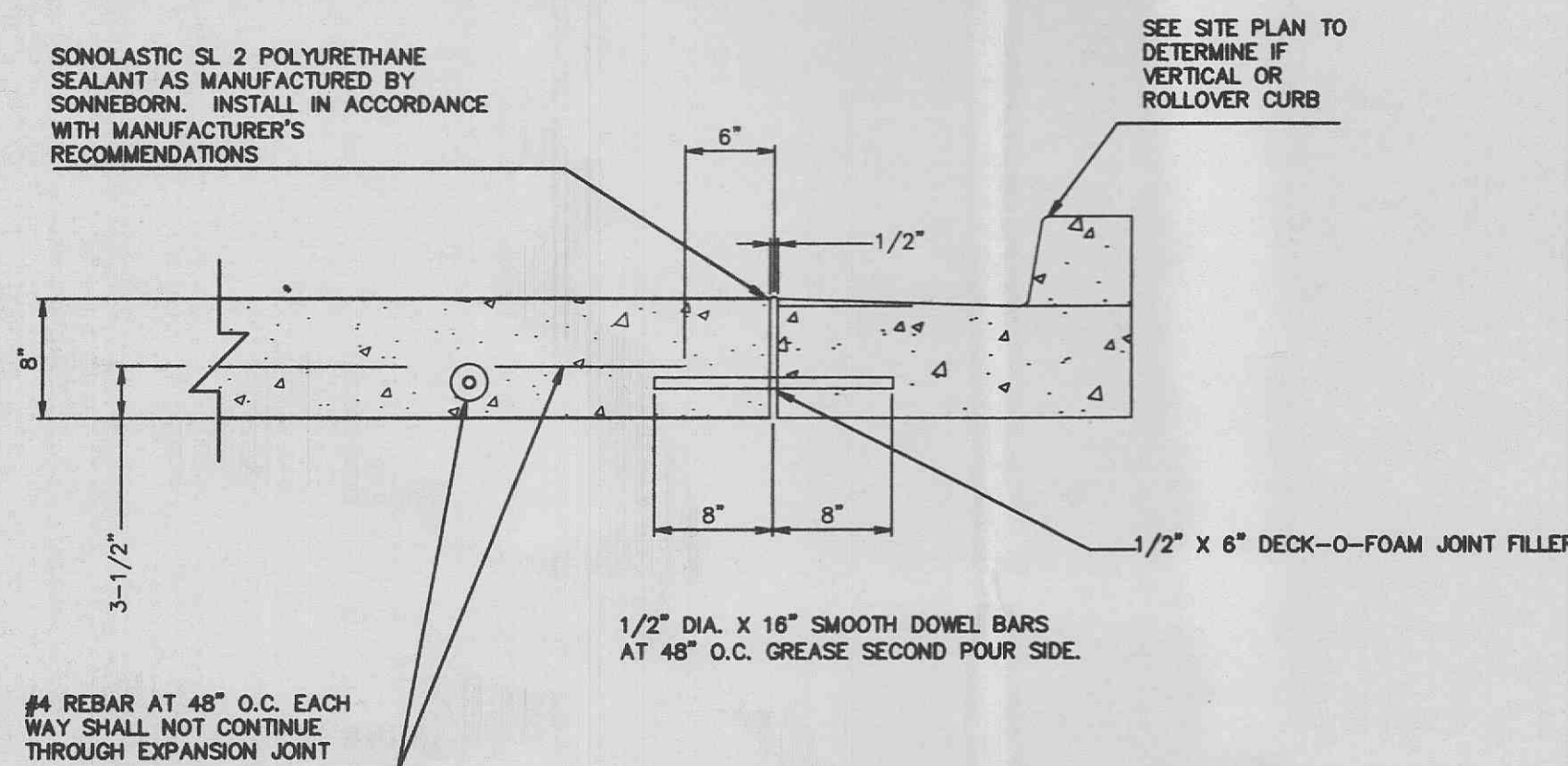
NO SCALE

NOTE: TREES THAT ARE LESS THAN 3"Ø SHALL BE SECURED WITH TYPICAL WIRE/TWINE SUPPORTS FASTENED TO WOOD STAKES AT THE GROUND AND PADDED AROUND THE TREE TRUNK WITH RUBBER HOSE. STAKES SHALL BE DRIVEN SO AS TO PROTRUDE 2" ± ABOVE GROUND LEVEL.



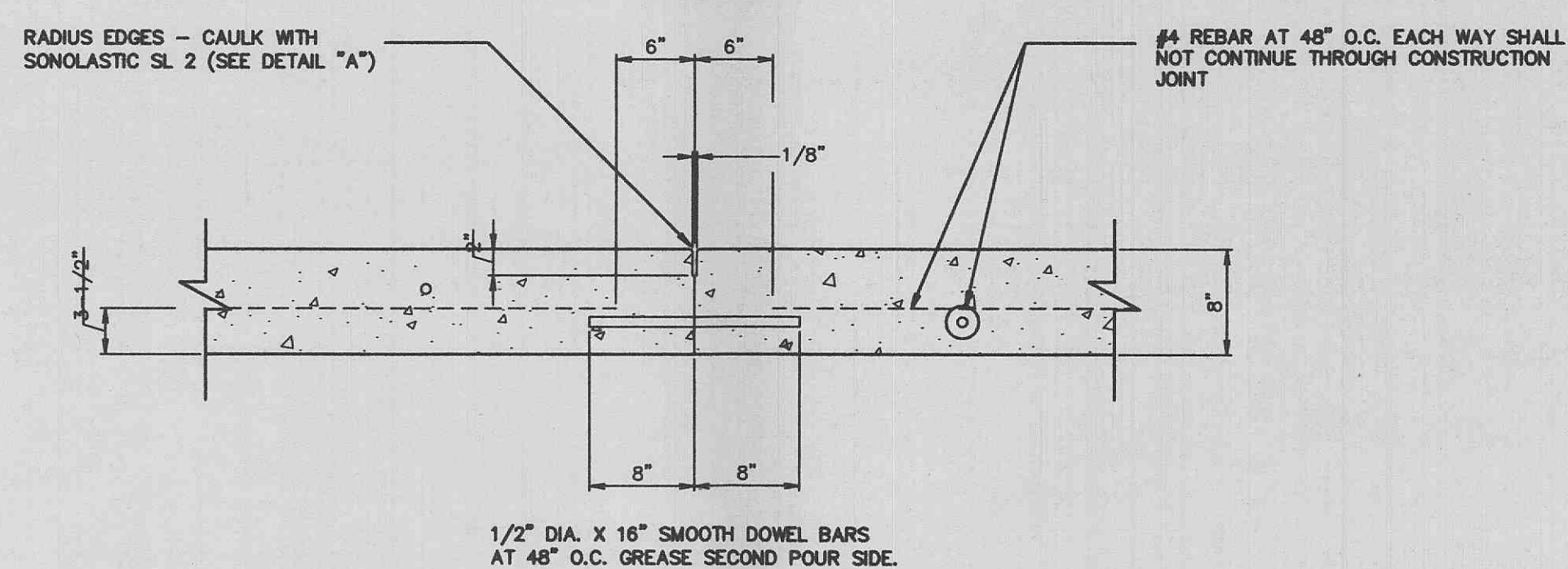
TREE PLANTING DETAIL FOR TREES 3"Ø OR GREATER

NO SCALE



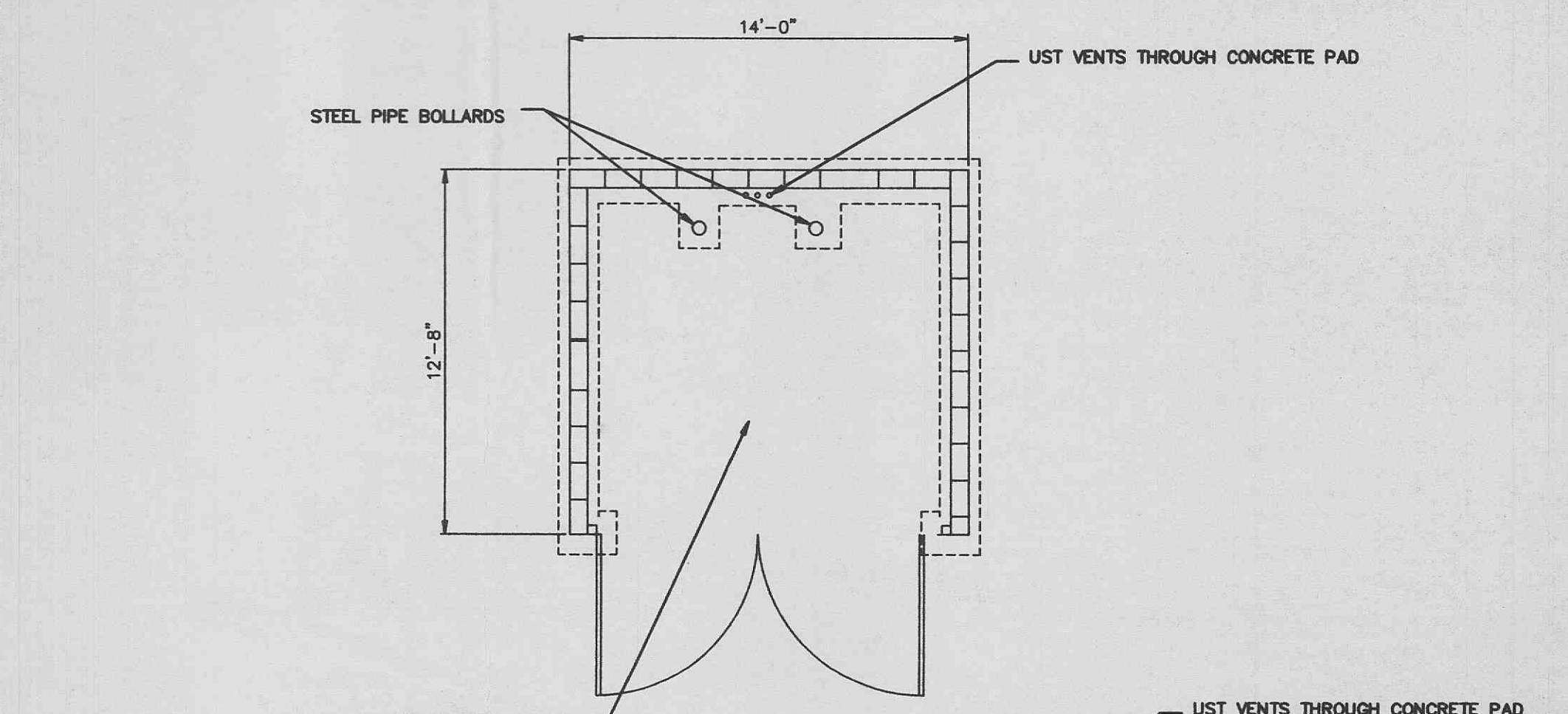
PAVING JOINT - EXPANSION (TYPE A)

NO SCALE



PAVING JOINT - CONSTRUCTION (TYPE B)

NO SCALE



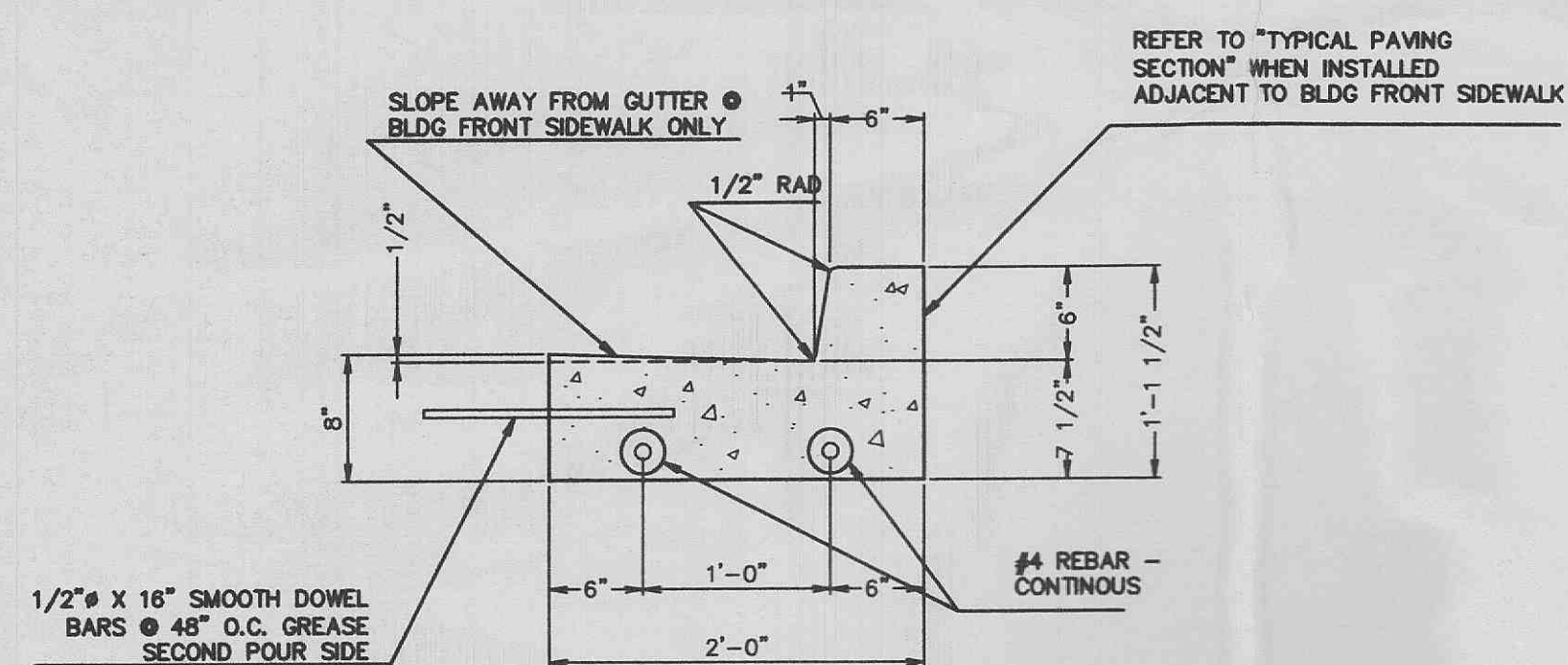
PLAN VIEW

FRONT ELEVATION

BOLLARD DETAIL

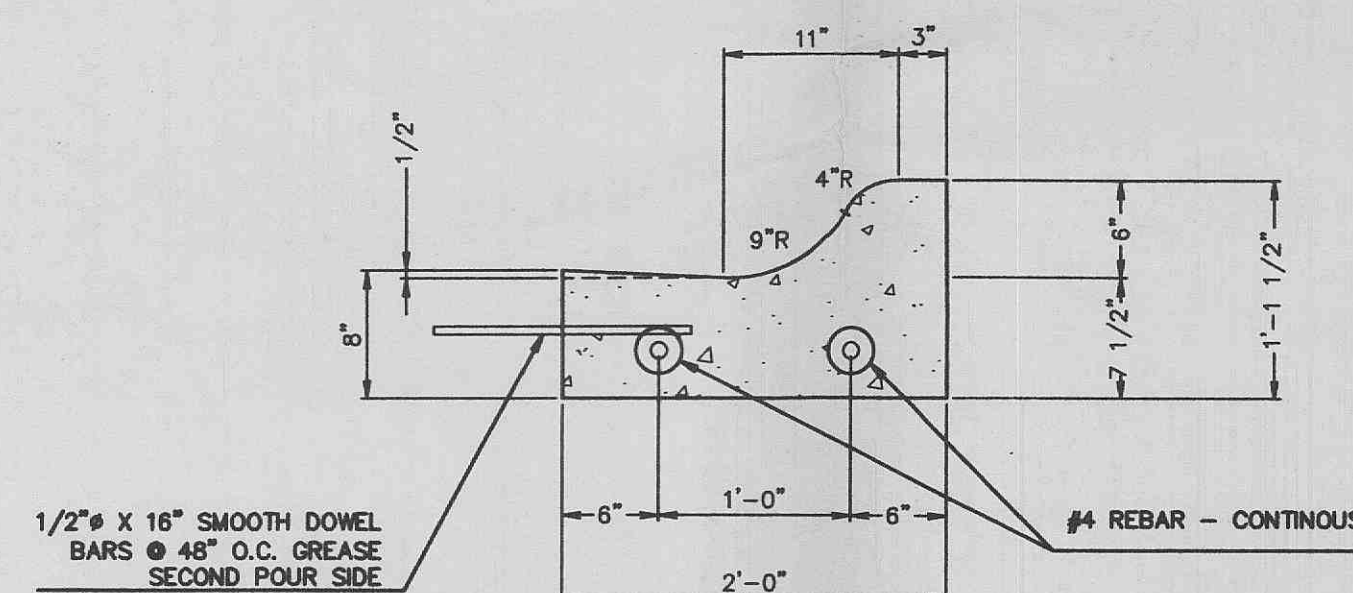
TRASH ENCLOSURE

NO SCALE



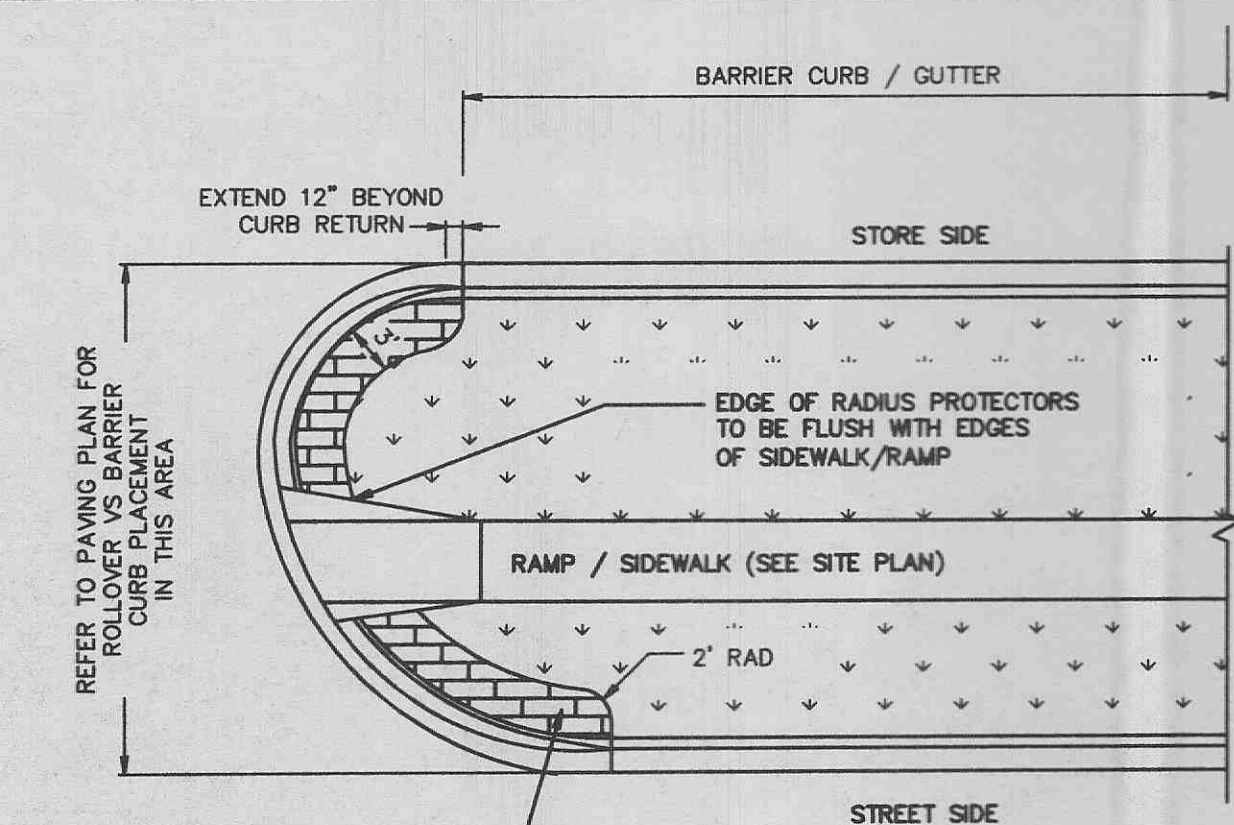
CURB DETAIL - BARRIER

NO SCALE



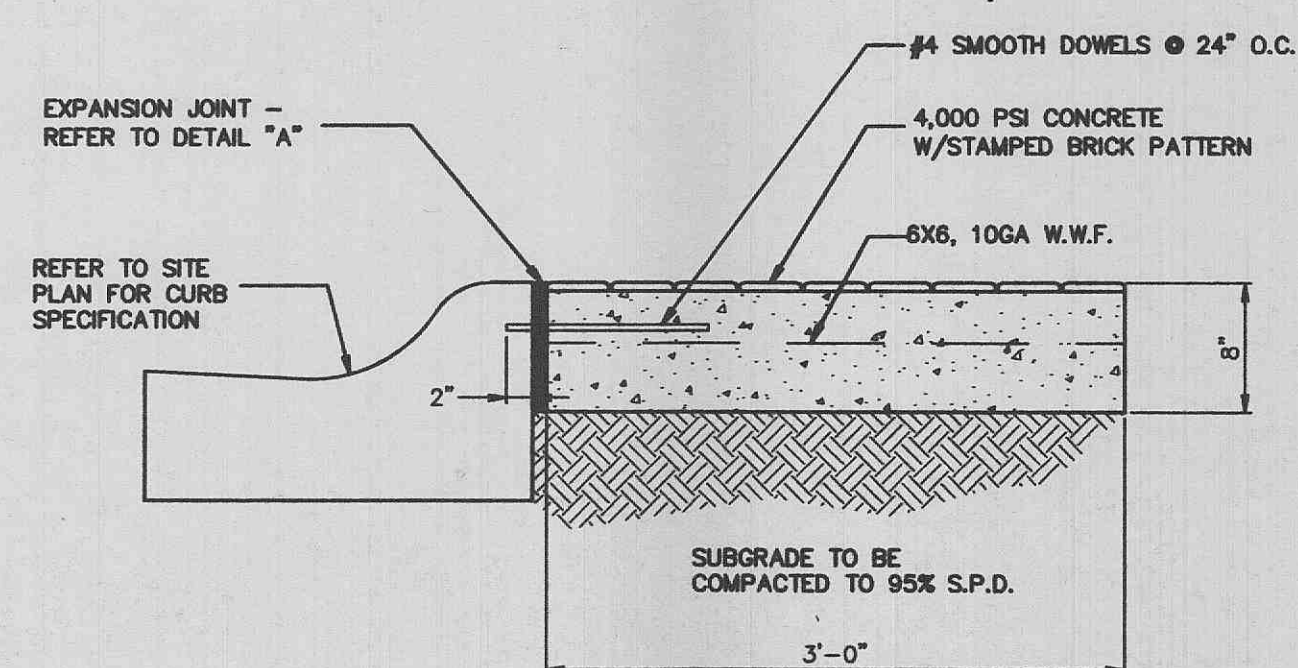
CURB DETAIL - ROLLOVER

NO SCALE



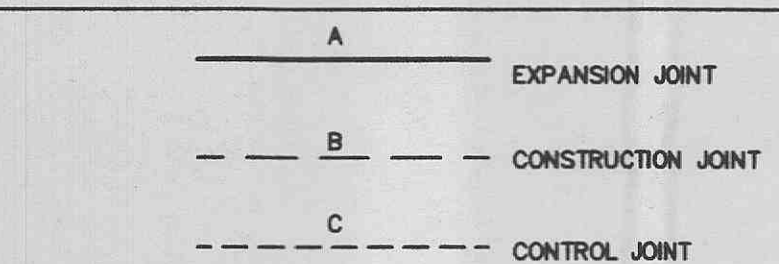
RADIUS PROTECTOR PLACEMENT

NO SCALE



RADIUS PROTECTOR SECTION

NO SCALE



JOINT PATTERN LEGEND

NO SCALE

NOTES:
 • CURBS ARE PLACED IN 10' LENGTHS
 • SIDEWALKS AND ALL PAVING TO RECEIVE
 • A MEDIUM BROOM FINISH. A QUIKTRIP
 REPRESENTATIVE SHALL BE PRESENT
 WHEN CONTRACTOR IS FINISHING
 CONCRETE TO DETERMINE CORRECT FINISH
 TEXTURE.

NO.	DATE	BY	DESCRIPTION
3	3/12/02	HRL	CITY COMMENTS
2	2/11/02	HRL	PROFILE
1	1/31/02	HRL	WIDENED PARKING AISLE & MOVED CI-4

DETAILS
QUIKTRIP #662

995 Bryan Rd. P.O. Box 10000, Baltimore, MD 21288-1000

Prepared for:
QUIKTRIP CORPORATION
 2255 Bluestone Dr
 St. Charles, MD 63303
 (636) 916-5706



the
 clayton
 engineering
 company, inc.
 ENGINEERS • SURVEYORS • PLANNERS
 11920 WESTLINE INDUSTRIAL DRIVE
 ST. LOUIS, MISSOURI 63146
 (314) 692-8888 FAX: (314) 692-8688
 clayton-engineering.com

Designed - D.J.B., M.J.V.
 Drawn - HRL
 Checked - D.J.B., M.J.V.
 Date - 11/13/01

Project Number
97216

Sheet Number
8 of 12