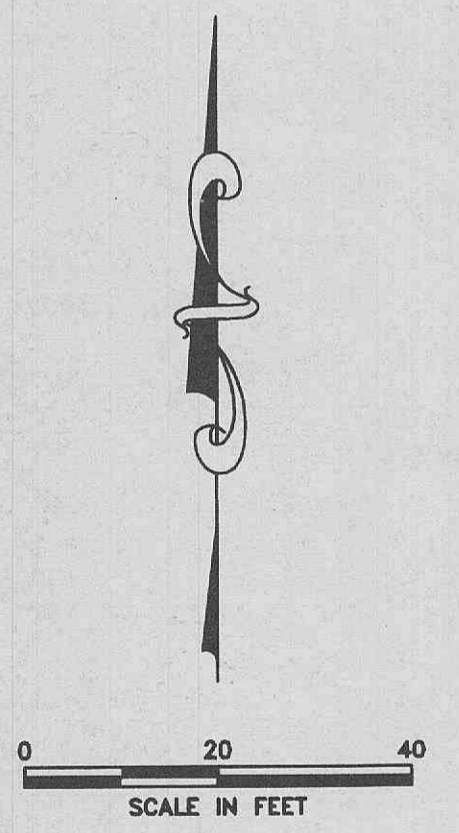
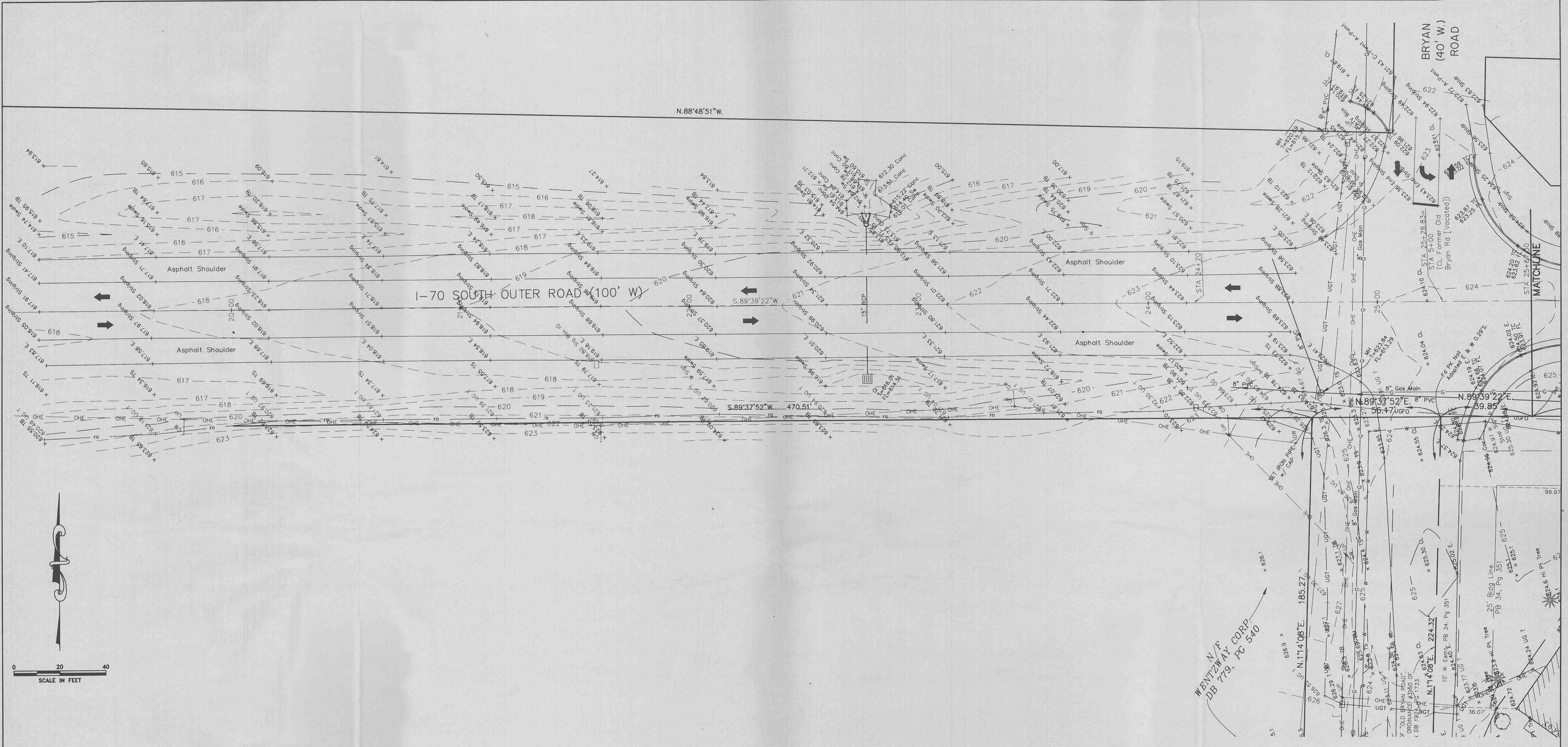


5152A



NO.	DATE	REVISIONS

**BOUNDARY & TOPOGRAPHIC SURVEY
QUIKTRIP #662**

Prepared for:
QUIKTRIP
 2255 Bluestone Dr
 St. Charles, MO 63303
 (636) 916-5706

James D. Baker
 12/13/01

the clayton engineering company, inc.
 ENGINEERS • SURVEYORS • PLANNERS
 11920 WESTLINE INDUSTRIAL DRIVE
 ST. LOUIS, MISSOURI 63146
 (314) 692-8888 FAX: (314) 692-8688
 clayton-engineering.com

Designed: RKF / HRL
 Drawn: RKF / HRL
 Checked: JDB
 Date: 11/26/01
 Project Number: 97216
 Sheet Number: 10B of 12

5152A