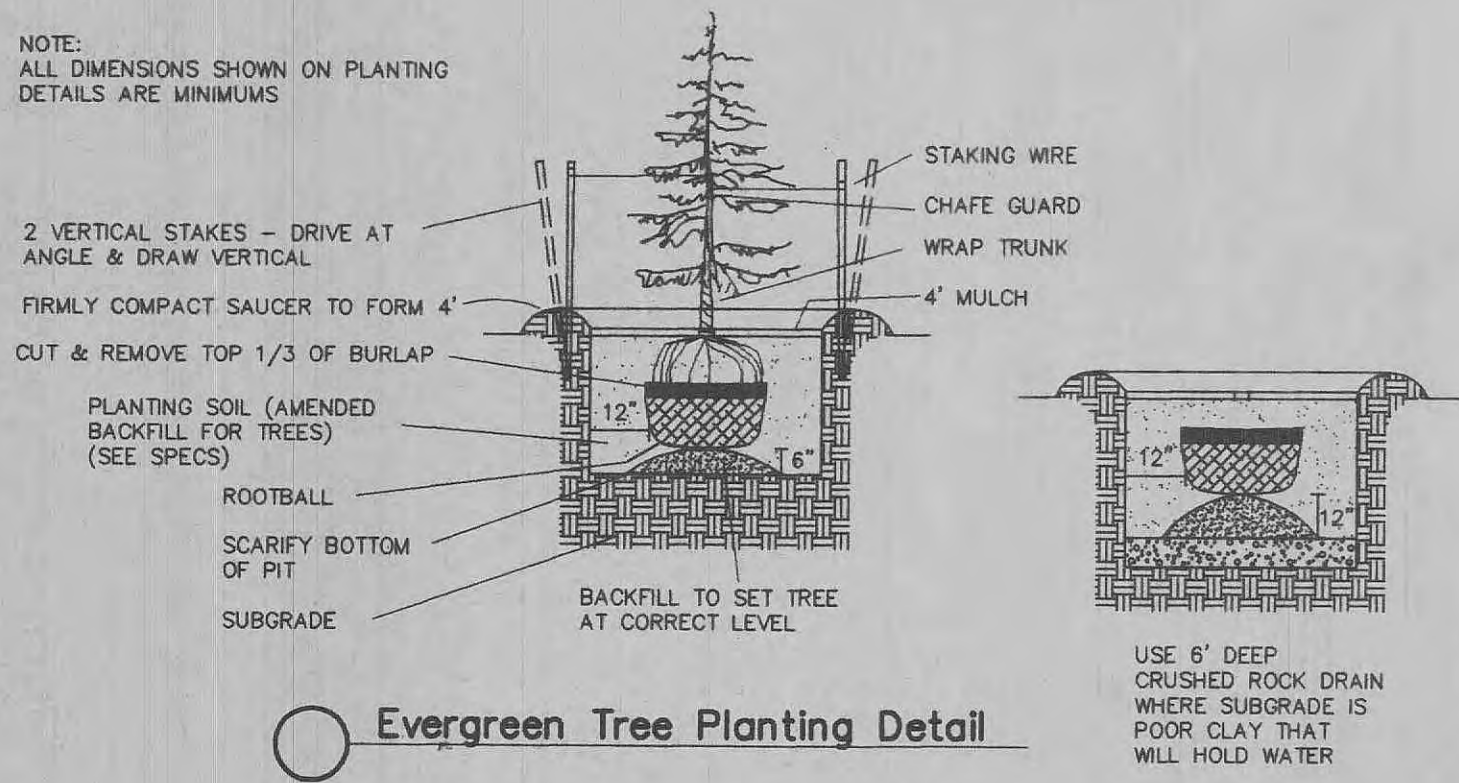
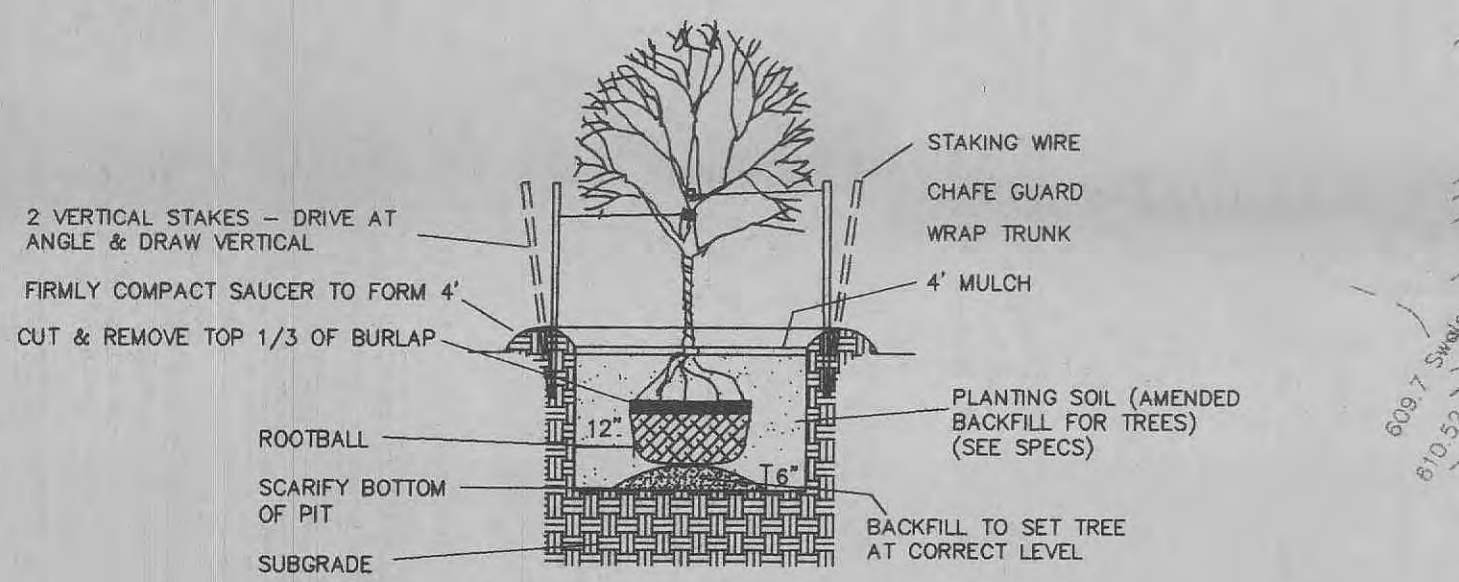


**STORM SEWER PROFILES**

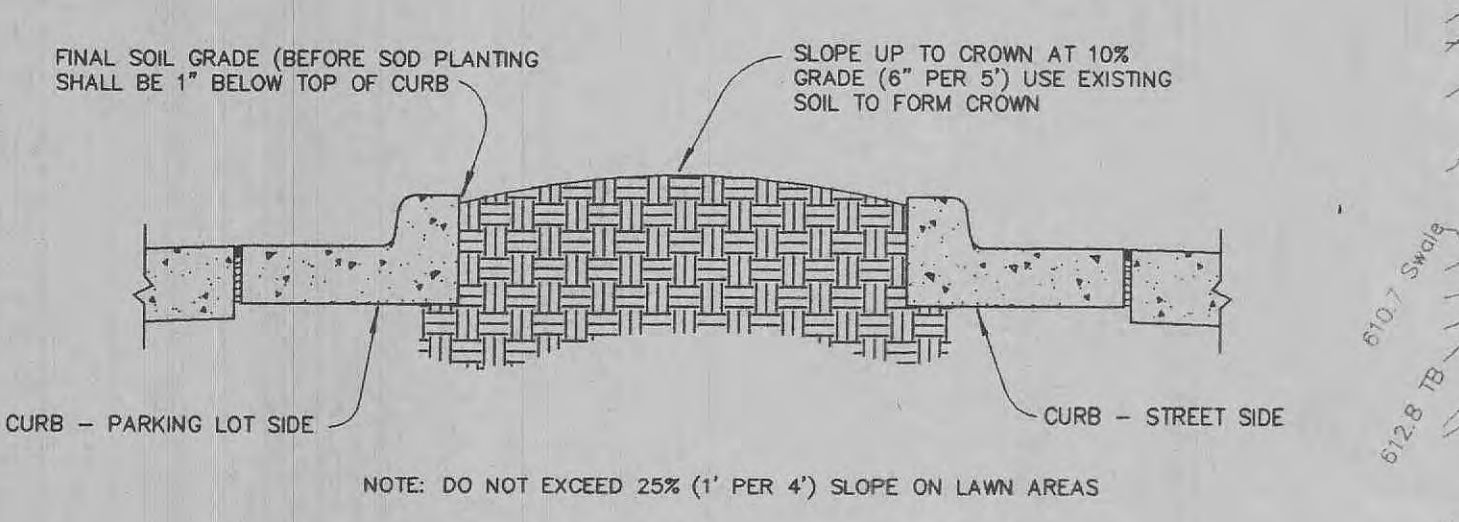
SCALE: HORIZ 1"=20'  
VERT. 1"=5'



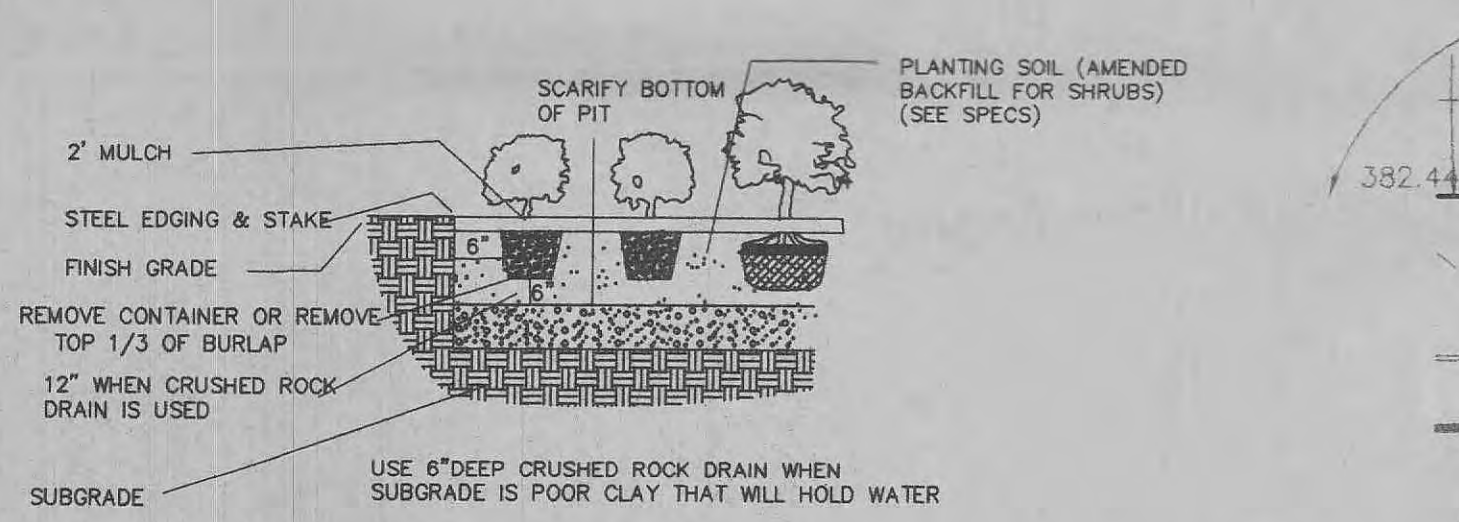
**Evergreen Tree Planting Detail**



**Deciduous Tree Planting Detail**



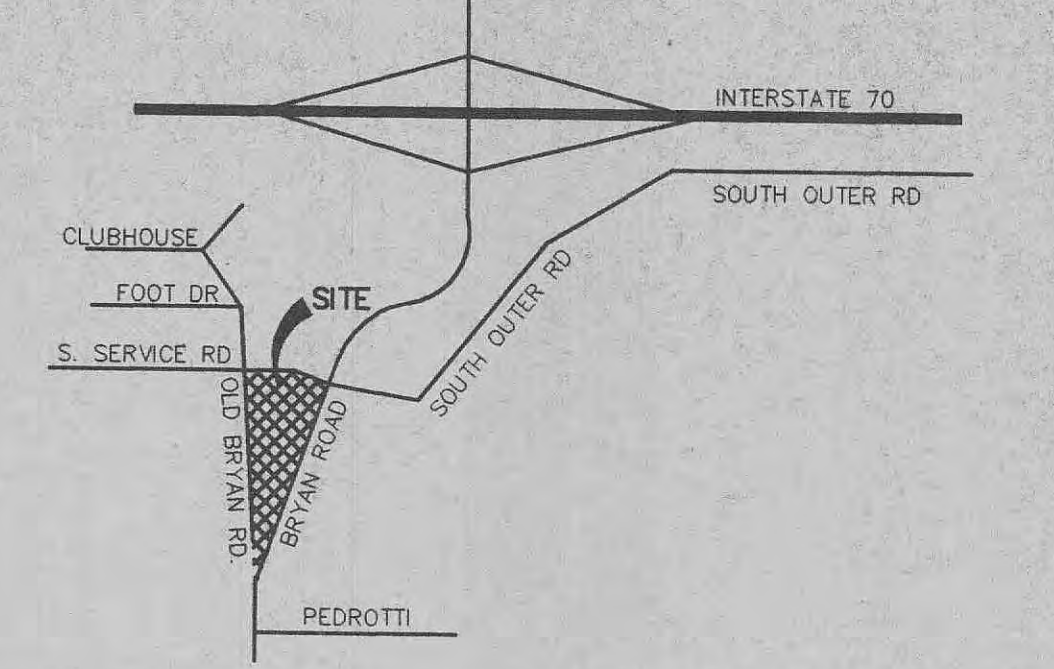
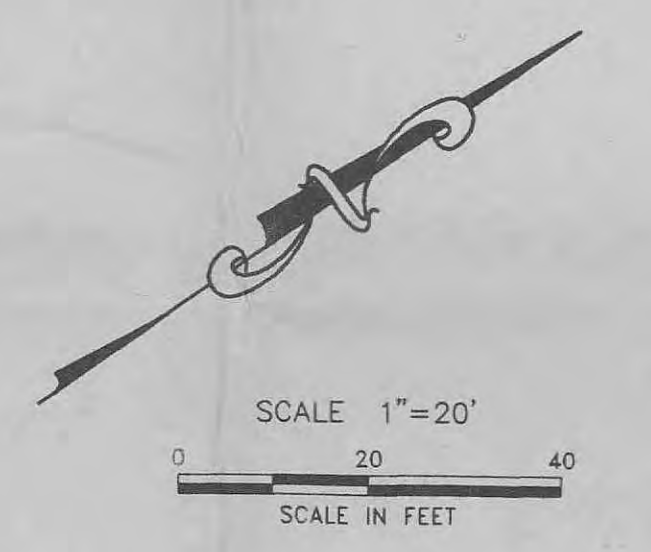
**Typ. Lawn Section**



**Shrub Planting Detail**

**LANDSCAPE LEGEND**

KEY	QUANTITY	DESCRIPTION
(Symbol)	5	Ea. ARISTOCRAT PEAR TREE 1-1/2" col. b.&t
(Symbol)	3	Ea. HONEY LOCUST TREE 1-1/2" col. b.&t

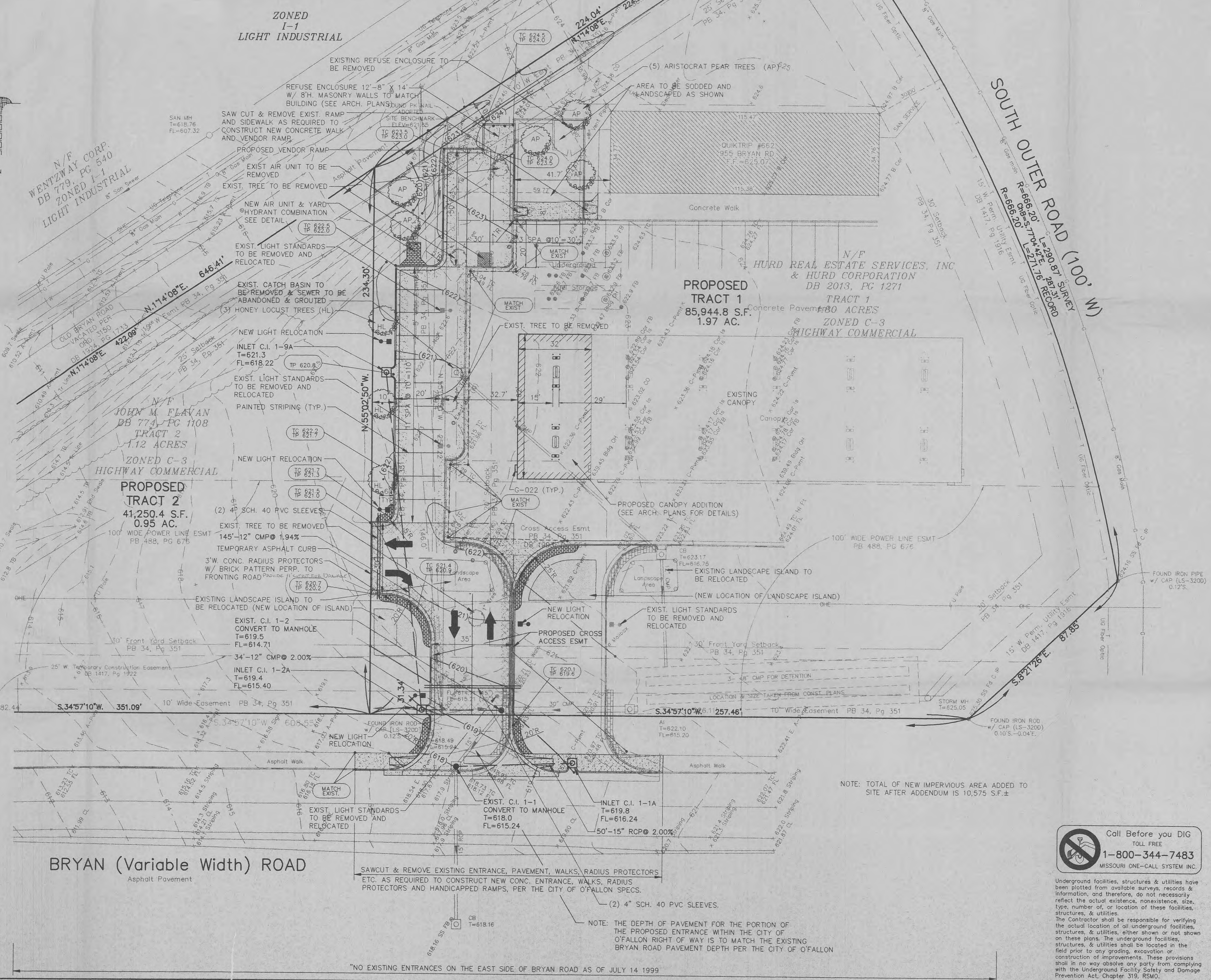


**ABBREVIATIONS**

C.L.	Centerline
C.O.	Crosscut
D.S.	Downspout
E.F.	Edge Of Pavement
F.F.	Finished Floor
F.G.	Finished Grade
FL	Flowline
GL	Gutterline
L.S.	Light Standard
L.S. (T.B.R.)	To Be Removed
T.C.	Top Of Curb
T.P.	Top Of Pavement
T.W.	Top Of Wall
B.W.	Bottom Of Wall
T.Wk.	Top Of Walk
C.M.	Concrete Monument
AL	Area Inlet
R/W	Right Of Way
G.I.	Grate Inlet
M.H.	Manhole
O.I.P.	Old Iron Pipe
R.	Radius
D.B.	Deed Book
T.Bk.	Top Of Bank
T.S.	Top Of Slope
C.M.P.	Corrugated Metal Pipe
P.V.C.	Polyvinyl Chloride Pipe
V.C.P.	Vitrified Clay Pipe
C.P.	Non-Reinforced Concrete Pipe
R.C.P.	Reinforced Concrete Pipe
D.I.P.	Ductile Iron Pipe
F/F.	Face To Face
B/B.	Back To Back
L/I.P.	Line In Place
T.I.	Top Of Island
T.O.	Top Of Grade
N.T.S.	Not To Scale

**LEGEND**

(Symbol)	Area Light w/120v. Rept.
(Symbol)	Connection (Proposed)
(Symbol)	Existing Contour
(Symbol)	Proposed Contour
(Symbol)	Existing Elevation
(Symbol)	Proposed Elevation
(Symbol)	Fire Hydrant
(Symbol)	Concrete
(Symbol)	Doorway Entrance
(Symbol)	Drainage Flow
(Symbol)	Swale
(Symbol)	Direction Of Traffic
(Symbol)	Water Meter Or Valve
(Symbol)	Gas Meter Or Valve
(Symbol)	Electric Service
(Symbol)	Gas Service
(Symbol)	Exist. Combination Sewer
(Symbol)	Telephone Service
(Symbol)	Water Service
(Symbol)	Exist. Sanitary Sewer
(Symbol)	Exist. Storm Sewer
(Symbol)	Proposed Sanitary Sewer
(Symbol)	Proposed Storm Sewer
(Symbol)	Utility Pole w/ Guy Wires
(Symbol)	Right Angle



The original of this drawing is on file at the office of The Clayton Engineering Company. Any modifications to this drawing shall release said Clayton Engineering Company, the Engineer and/or the Surveyor whose seal appears hereon from any liability resulting from said unauthorized modifications.

REVISIONS

3	7/14/99	JMP	REVISIONS PER CITY OF O'FALLON REVIEW LETTED DATED JULY 12 1999
2	6/23/99	HJT	Add Landscaping, relocated lights per client comments
1	4/21/99	HRL	Moved Refuse Enclosure & Parking on South Side & New PL

INDEX

**APPROVED**

QUICKTRIP CORPORATION  
1023 EXECUTIVE PARKWAY SUITE 22  
ST. LOUIS, MISSOURI 63141  
(314) 878-1221

SEAL 7/21/99

**QT** QUICKTRIP CORPORATION  
1023 EXECUTIVE PARKWAY SUITE 22  
ST. LOUIS, MISSOURI 63141  
(314) 878-1221

**QUICKTRIP #662**  
SITE DIMENSION & GRADING PLAN

995 BRYAN RD. 1-70 SOUTH OUTER RD. O'FALLON, MISSOURI 63366

the clayton engineering company, inc.  
ENGINEERS • SURVEYORS • PLANNERS

11620 WESTLINE INDUSTRIAL DRIVE  
ST. LOUIS, MISSOURI 63146  
(314) 882-8888 FAX (314) 882-8888  
EMAIL: CLAYTON@PRIMARY.NET

Designed: JMP  
Drawn: JMP  
Checked: DJB  
Date: 6/21/99  
Project Number: 97216  
Sheet Number: 1 of 4

FILE N:\97216\PLANS\ADDENDUM.DWG PLOTTED 07/20/1999 1:23 PM  
F.S. F.B. SUR.

Call Before you DIG  
TOLL FREE  
1-800-344-7483  
MISSOURI ONE-CALL SYSTEM INC.

Underground facilities, structures & utilities have been plotted from available surveys, records & information, and therefore, do not necessarily reflect the actual existence, nonexistence, size, type, number or location of these facilities, structures, & utilities.

The Contractor shall be responsible for verifying the actual location of all underground facilities, structures, & utilities, either shown or not shown on these plans. The underground facilities, structures, & utilities shall be located in the field prior to any grading, excavation or construction of improvements. These provisions shall in no way absolve any party from complying with the Underground Facility Safety and Damage Prevention Act, Chapter 319, RSMo.

NOTE: TOTAL OF NEW IMPERVIOUS AREA ADDED TO SITE AFTER ADDENDUM IS 10,575 S.F.±

NOTE: THE DEPTH OF PAVEMENT FOR THE PORTION OF THE PROPOSED ENTRANCE WITHIN THE CITY OF O'FALLON RIGHT OF WAY IS TO MATCH THE EXISTING BRYAN ROAD PAVEMENT DEPTH PER THE CITY OF O'FALLON

SAWCUT & REMOVE EXISTING ENTRANCE, PAVEMENT, WALKS, RADIUS PROTECTORS ETC. AS REQUIRED TO CONSTRUCT NEW CONC. ENTRANCE, WALKS, RADIUS PROTECTORS AND HANDICAPPED RAMPS, PER THE CITY OF O'FALLON SPECS.

**BRYAN (Variable Width) ROAD**  
Asphalt Pavement

NOTE: ALL DIMENSIONS SHOWN ON PLANTING DETAILS ARE MINIMUMS

2 VERTICAL STAKES - DRIVE AT ANGLE & DRAW VERTICAL. FIRMLY COMPACT SAUCER TO FORM 4" CUT & REMOVE TOP 1/3 OF BURLAP.

PLANTING SOIL (AMENDED BACKFILL FOR TREES) (SEE SPECS). ROOTBALL. SCARIFY BOTTOM OF PIT. SUBGRADE.

USE 8" DEEP CRUSHED ROCK DRAIN WHERE SUBGRADE IS POOR CLAY THAT WILL HOLD WATER.

2 VERTICAL STAKES - DRIVE AT ANGLE & DRAW VERTICAL. FIRMLY COMPACT SAUCER TO FORM 4" CUT & REMOVE TOP 1/3 OF BURLAP.

ROOTBALL. SCARIFY BOTTOM OF PIT. SUBGRADE.

PLANTING SOIL (AMENDED BACKFILL FOR TREES) (SEE SPECS). STAKING WIRE. CHAPE GUARD. WRAP TRUNK. 4" MULCH.

FINAL SOIL GRADE (BEFORE SOD PLANTING) SHALL BE 1" BELOW TOP OF CURB.

SLOPE UP TO CROWN AT 10% GRADE (6" PER 5') USE EXISTING SOIL TO FORM CROWN.

NOTE: DO NOT EXCEED 25% (1" PER 4") SLOPE ON LAWN AREAS.

2" MULCH. SCARIFY BOTTOM OF PIT. FINISH GRADE.

PLANTING SOIL (AMENDED BACKFILL FOR SHRUBS) (SEE SPECS). STEEL EDGING & STAKE. FINISH GRADE. REMOVE CONTAINER OR REMOVE TOP 1/3 OF BURLAP. 12" WHEN CRUSHED ROCK DRAIN IS USED. SUBGRADE.

USE 8" DEEP CRUSHED ROCK DRAIN WHEN SUBGRADE IS POOR CLAY THAT WILL HOLD WATER.

NO EXISTING ENTRANCES ON THE EAST SIDE OF BRYAN ROAD AS OF JULY 14 1999