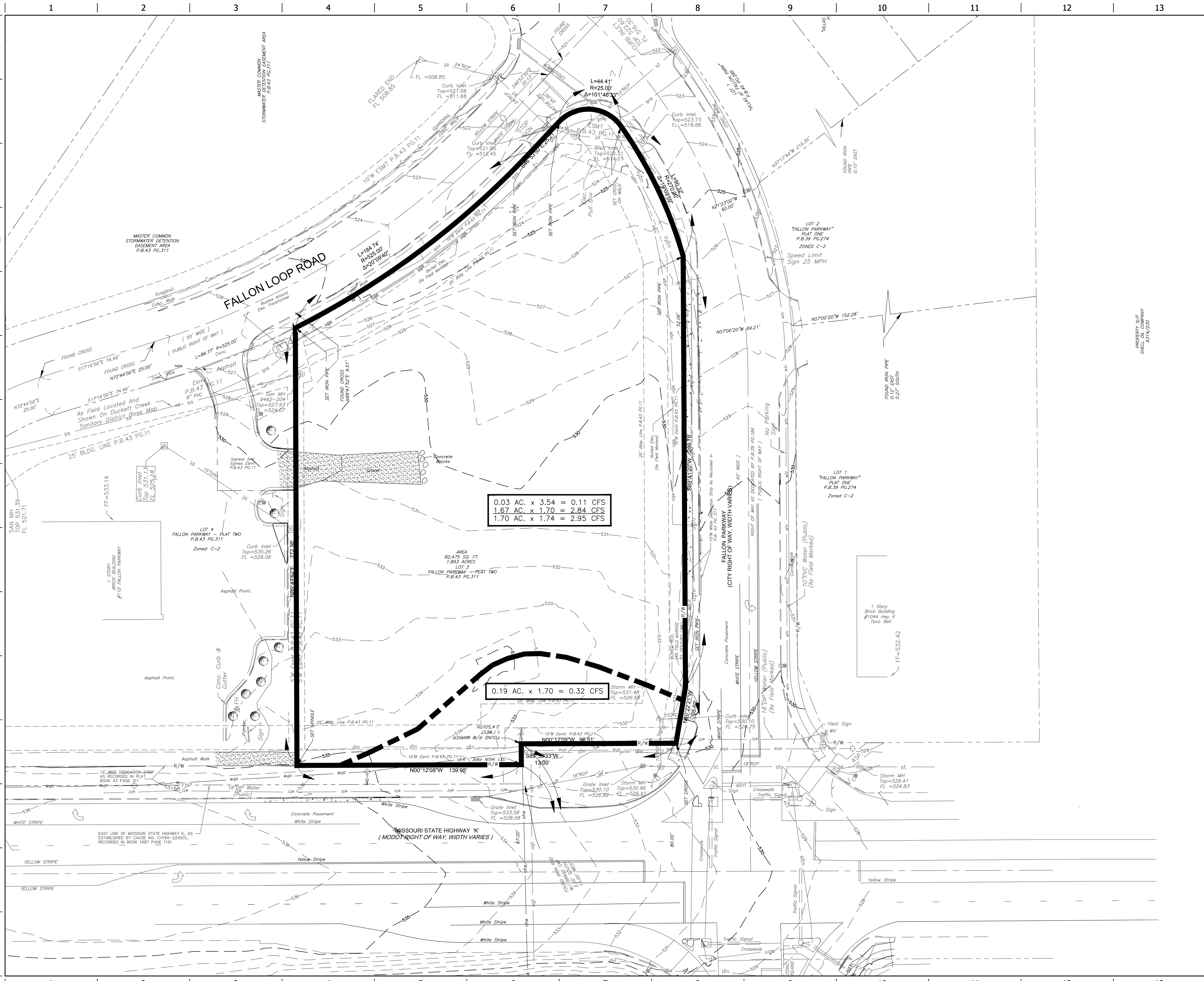


FILE LOCATION: K:\151054 - QuikTrip #0675 - Highway K and Fallon Parkway\Civil\06-0675 Civil.dwg, 9/15/2016 9:20:47 AM, DWG To PDF.pc3



DESIGN STORM	
15 YEAR FREQUENCY / 20 MINUTE DURATION	
"Pi" Factor (5% Impervious)	= 1.70 cfs/acre
"Pi" Factor (100% Impervious)	= 3.54 cfs/acre
EXISTING RUNOFF CALCULATIONS:	
TOTAL SITE AREA = 1.89 Acres	
IMPERVIOUS: 0.03 Ac. x 3.54 = 0.11 c.f.s.	
PERVIOUS: 1.86 Ac. x 1.70 = 3.16 c.f.s.	
EXISTING 15yr./20min. RUNOFF: 3.27 c.f.s.	

**PROJECT NO.: 151054**

NAME: MICHAEL J. VELLOFF  
 LICENSE NUMBER: E-2000161862  
 DISCIPLINE: CIVIL  
 CORPORATION AUTHORITY NUMBER: 00194

THE SEAL OF MICHAEL J. VELLOFF ON THIS DRAWING APPLIES ONLY TO THE CIVIL SITE ENGINEERING SHOWN. IT DOES NOT APPLY, NOR IS ANY RESPONSIBILITY TAKEN FOR ENVIRONMENTAL, GEOTECHNICAL (INCLUDING BUT NOT LIMITED TO SLOPE STABILITY), STRUCTURAL, HVAC, PLUMBING, ELECTRICAL, FIRE PROTECTION, TRAFFIC ENGINEERING, SURVEYING (BOUNDARY AND TOPOGRAPHIC), OR ARCHITECTURAL (BUILDING OR LANDSCAPE).

**QuikTrip No. 0675**  
 1-40 FALLON LOOP ROAD  
 O'FALLON, MISSOURI 63368

**QT**

© COPYRIGHT QUIKTRIP CORPORATION 2011  
 ANY UNAUTHORIZED USE, REPRODUCTION, PUBLICATION, DISTRIBUTION, OR SALE IN WHOLE OR IN PART, IS STRICTLY FORBIDDEN.

PROTOTYPE: P-87  
 DIVISION: 06  
 VERSION: 001  
 DESIGNED BY: RKF  
 DRAWN BY: RKF  
 REVIEWED BY: MJV

REV	DATE	DESCRIPTION
1	08-25-16	BID SET
2	09-15-16	CONSTRUCTION SET

ORIGINAL ISSUE DATE: 04-14-16

SHEET TITLE:  
 PRE-DEVELOPED DRAINAGE MAP

SHEET NUMBER:  
**C400**

