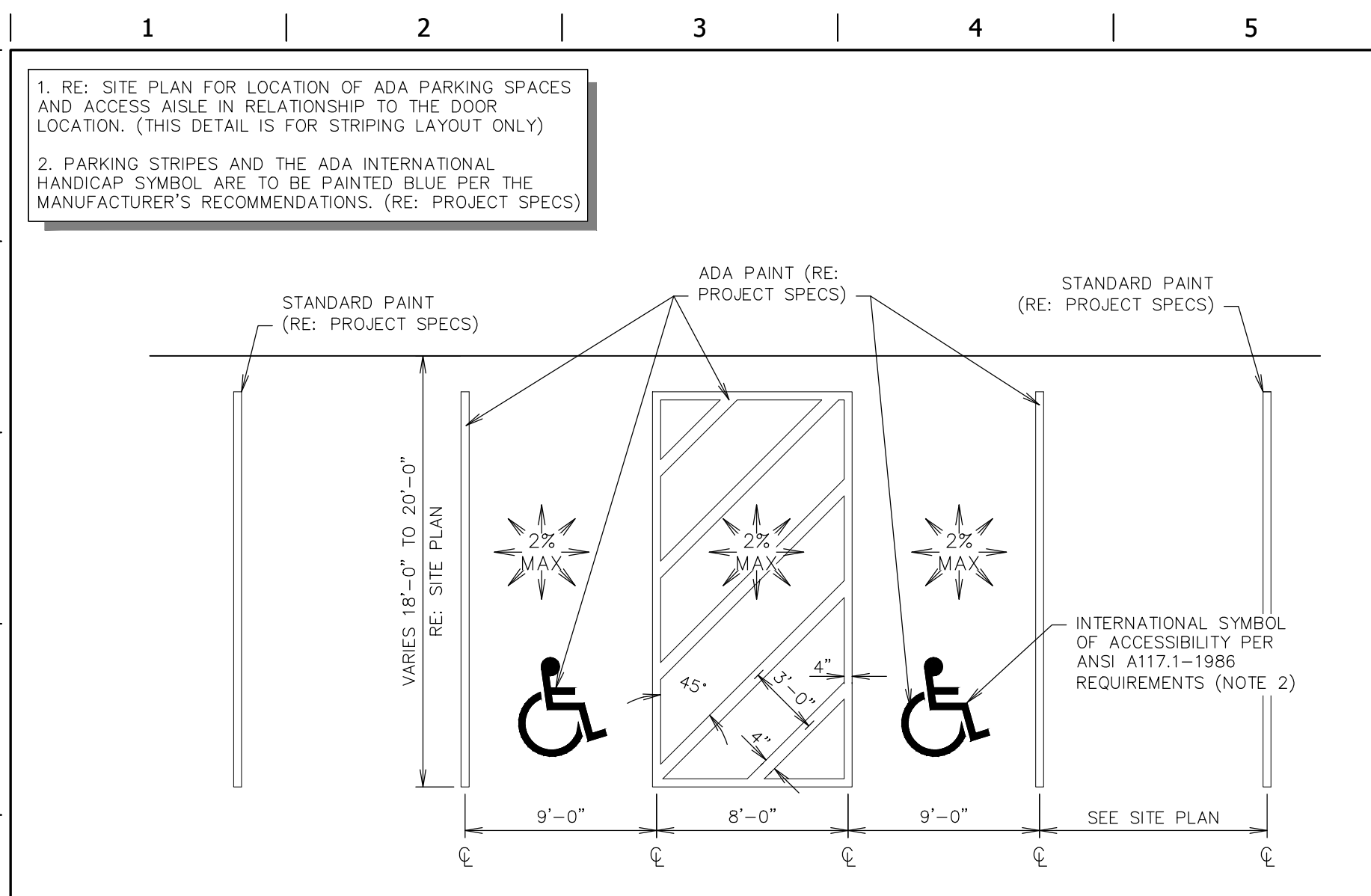
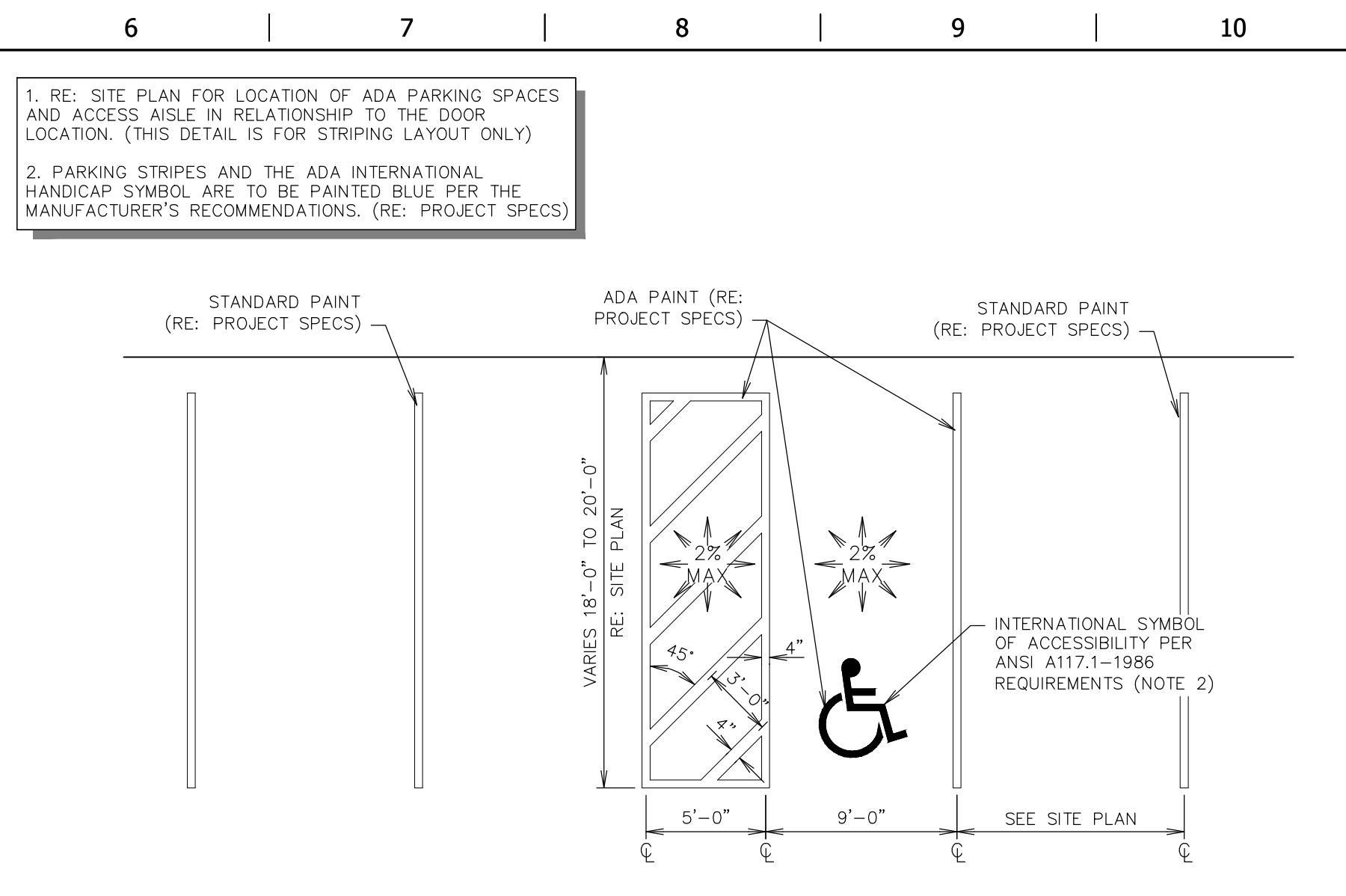


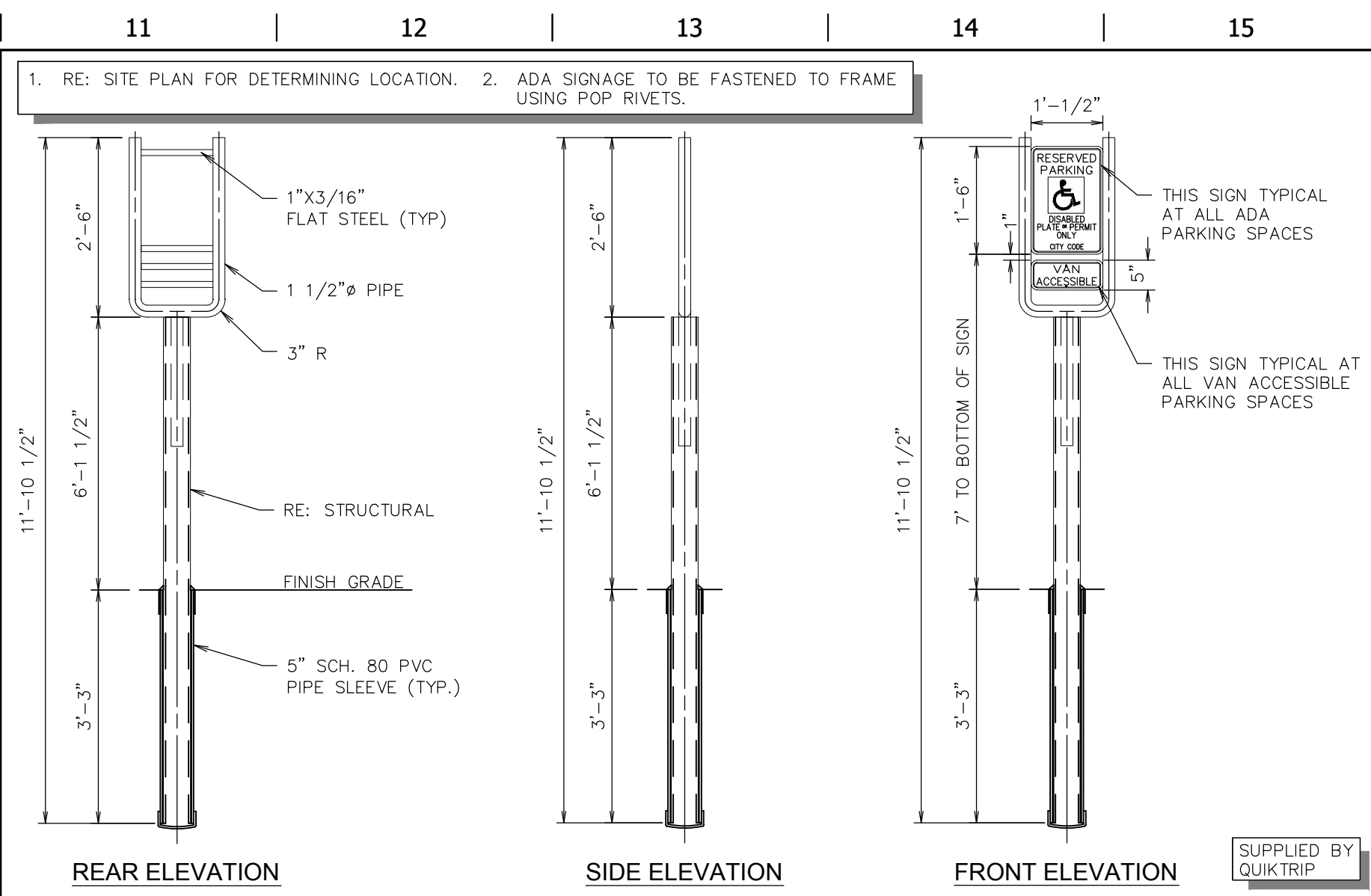
FILE LOCATION: K:\151054 - QuikTrip #0675 - Highway K and Fallon Parkway\Civil\06-0675 DETAILS ADA.dwg, 9/15/2016 8:40:22 AM, DWG To PDF.pc3



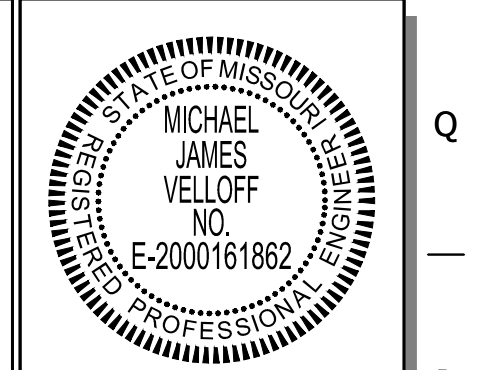
L1 DOUBLE STALL ADA PARKING STRIPING DETAIL
NTS SN: AD001A008



L6 SINGLE STALL ADA PARKING STRIPING DETAIL
NTS SN: AD002A008



L11 ADA SIGN IN BOLLARD
NTS SN: AD003C006



PROJECT NO. 151054
NAME: MICHAEL J. VELLOFF
LICENSE NUMBER: E-2000161862
DISCIPLINE: CIVIL
CORPORATION AUTHORITY NUMBER: 601194

THE SEAL OF MICHAEL J. VELLOFF ON THIS DRAWING APPLIES ONLY TO THE CIVIL/SITE ENGINEERING SHOWN. IT DOES NOT APPLY, NOR IS ANY RESPONSIBILITY TAKEN FOR ENVIRONMENTAL, GEOTECHNICAL (INCLUDING BUT NOT LIMITED TO SLOPE STABILITY), STRUCTURAL, HVAC, PLUMBING, ELECTRICAL, FIRE PROTECTION, TRAFFIC ENGINEERING, SURVEYING (BOUNDARY AND TOPOGRAPHIC), OR ARCHITECTURAL (BUILDING OR LANDSCAPE).

QuikTrip No. 0675
140 FALLON LOOP ROAD
OFALLON, MISSOURI 63368



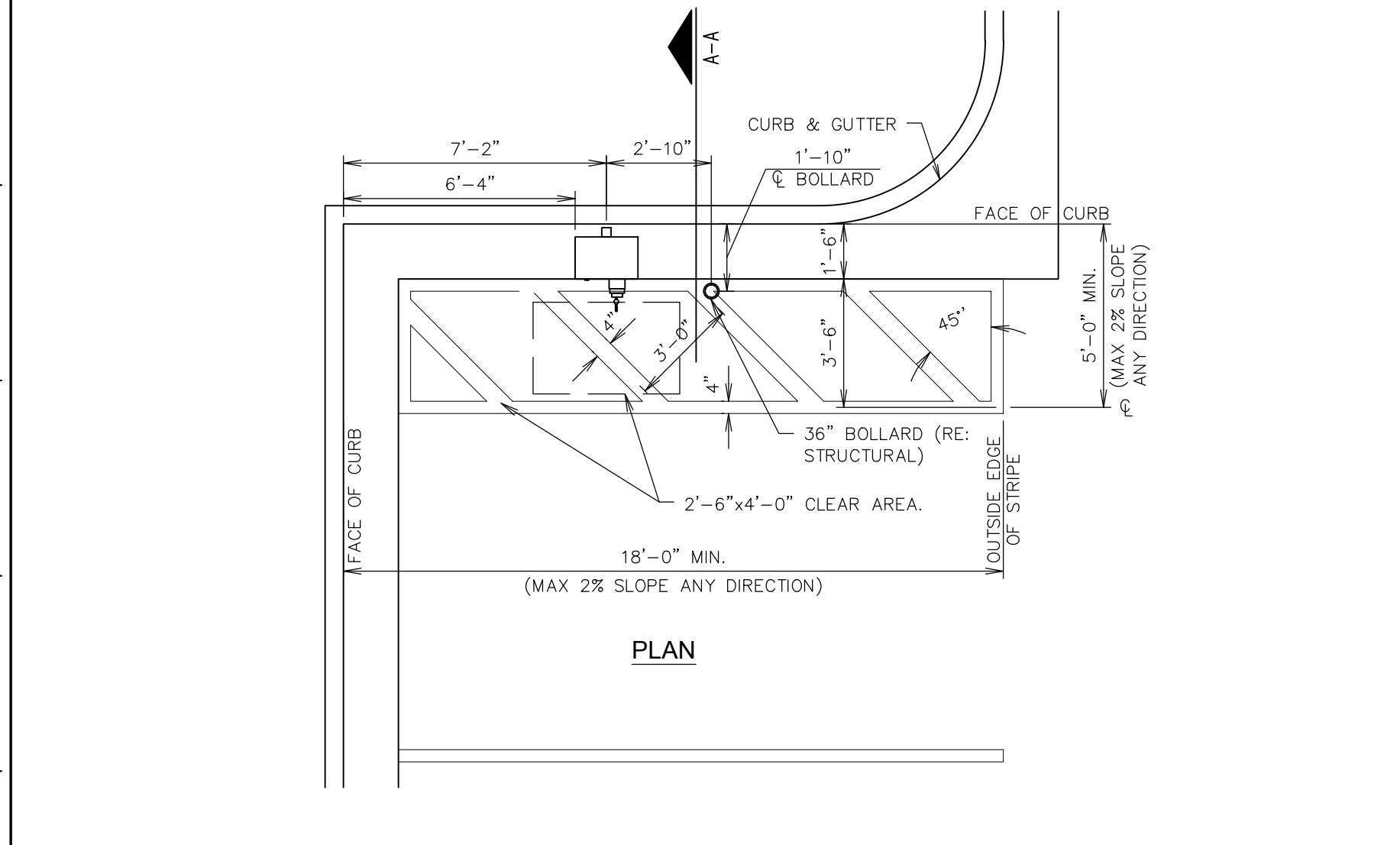
PROTOTYPE: P-87
DIVISION: 06
VERSION: 001
DESIGNED BY: RKF
DRAWN BY: RKF
REVIEWED BY: MJV

REV	DATE	DESCRIPTION
1	09/15/16	CONSTRUCTION SET

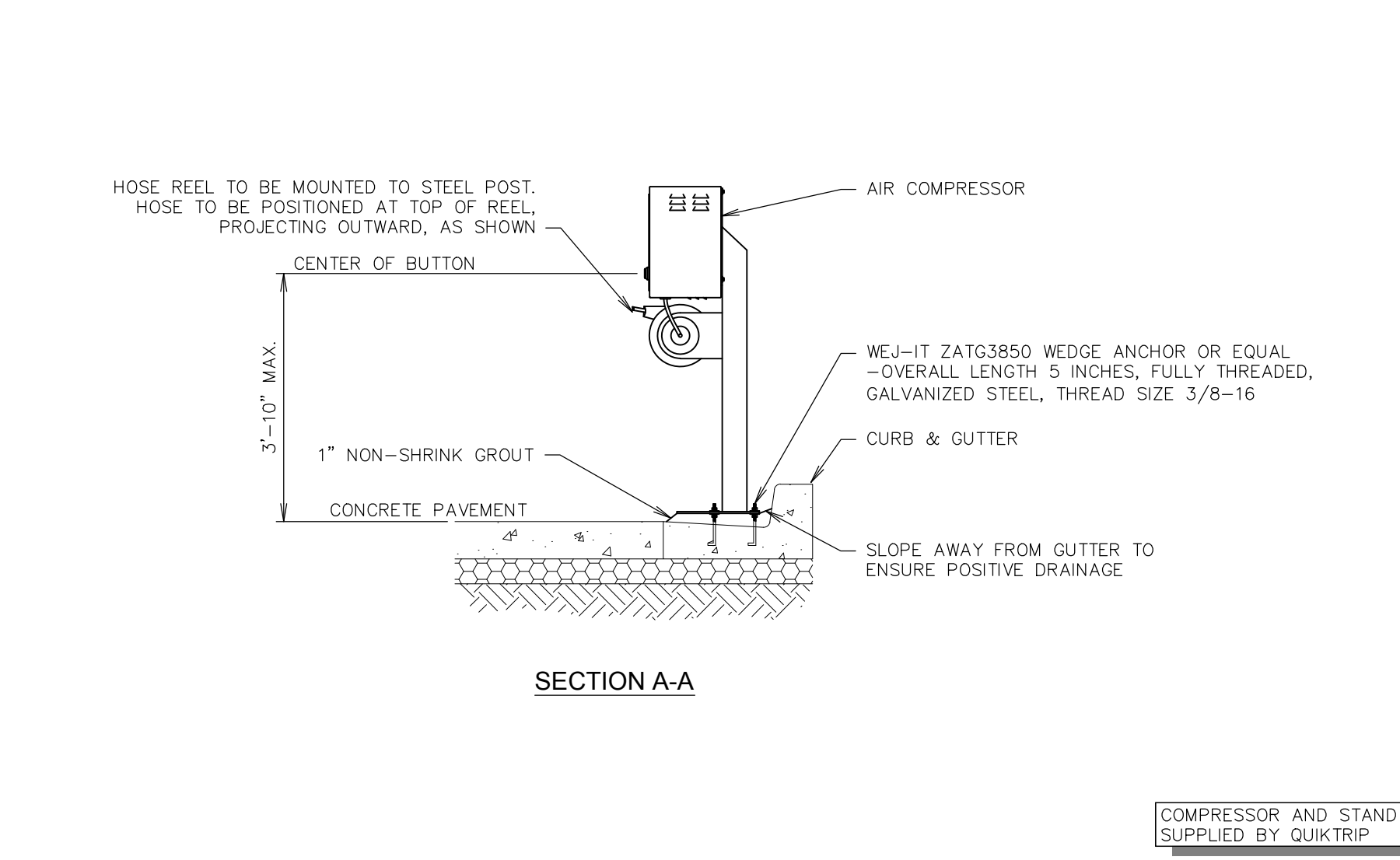
SHEET TITLE:
ADA DETAILS

SHEET NUMBER:
C510

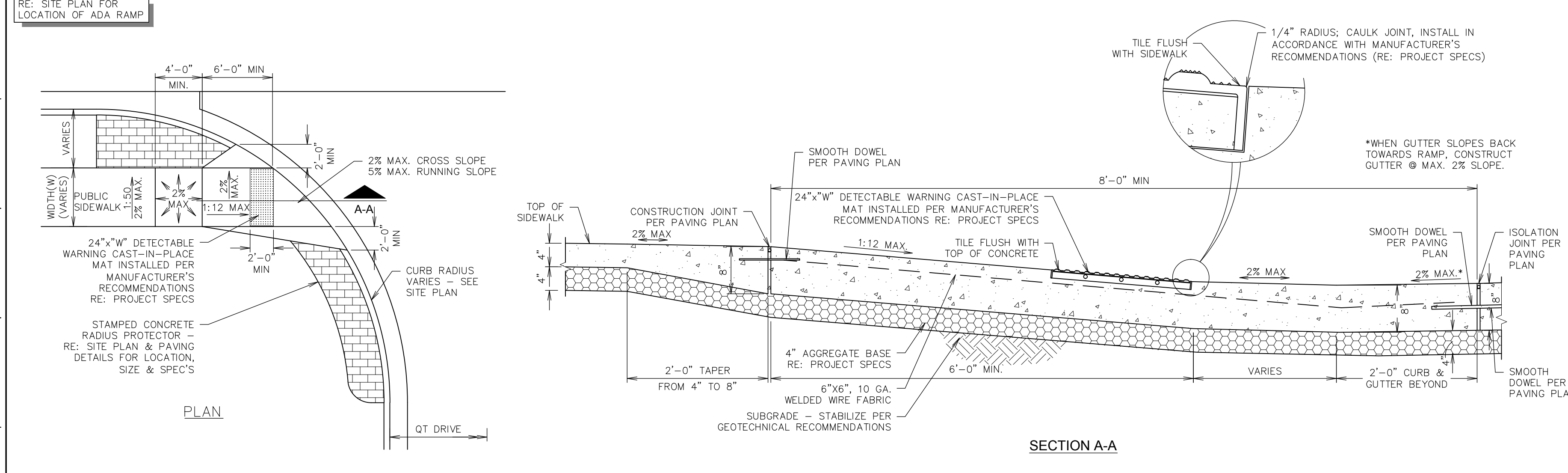
ORIGINAL ISSUE DATE: 04-14-16



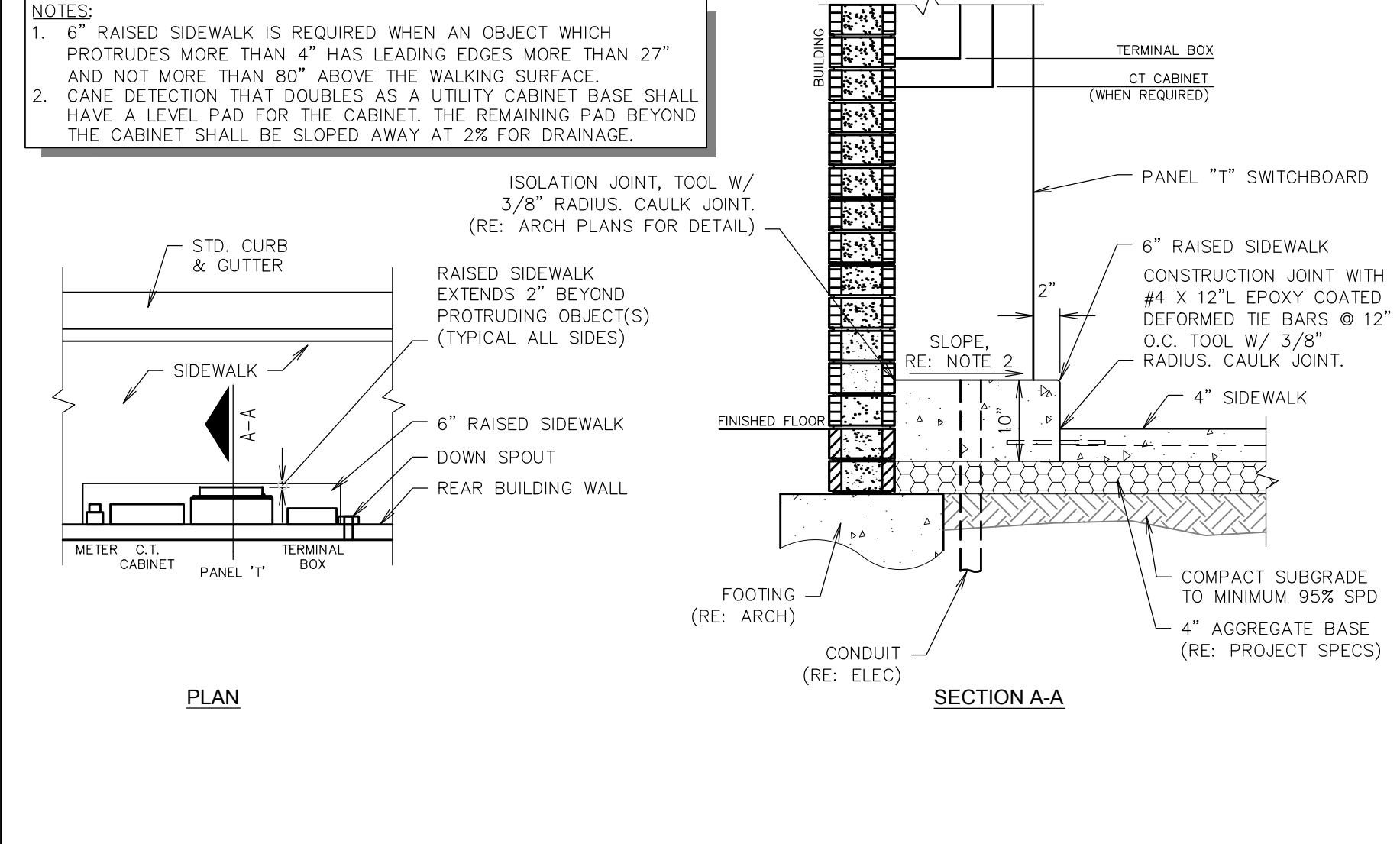
F1 AIR SERVICE INSTALL PLAN (RIGHT HAND INSTALL)
NTS SN: AD004A008



F11 RAMP - CURB TRANSITION PAINTING DETAIL
NTS SN: AD015A002



A1 ADA ACCESS RAMP AT DRIVE
NTS SN: AD006A005



A11 CANE DETECTION FOR PROTRUDING OBJECTS
NTS SN: AD014A003