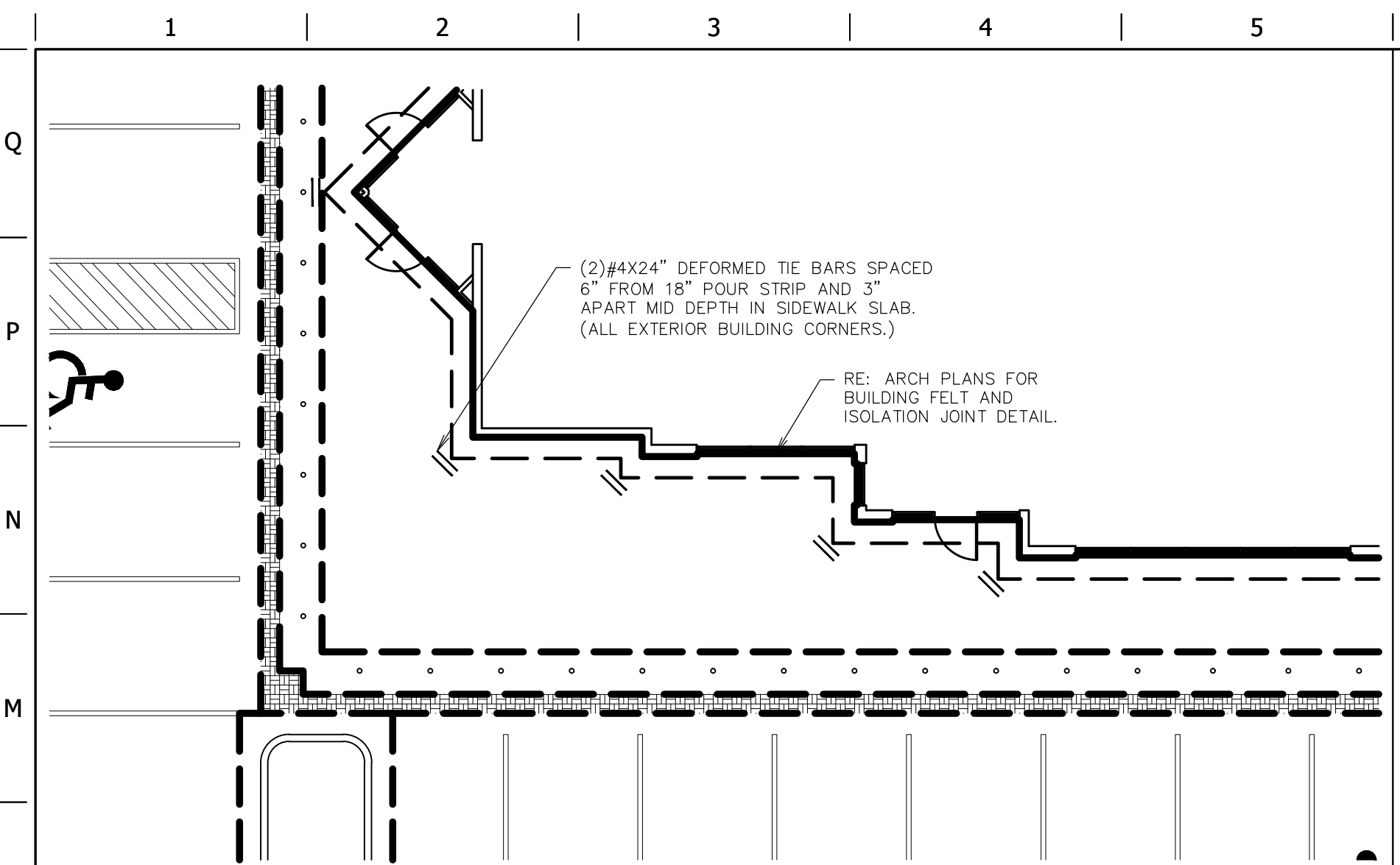
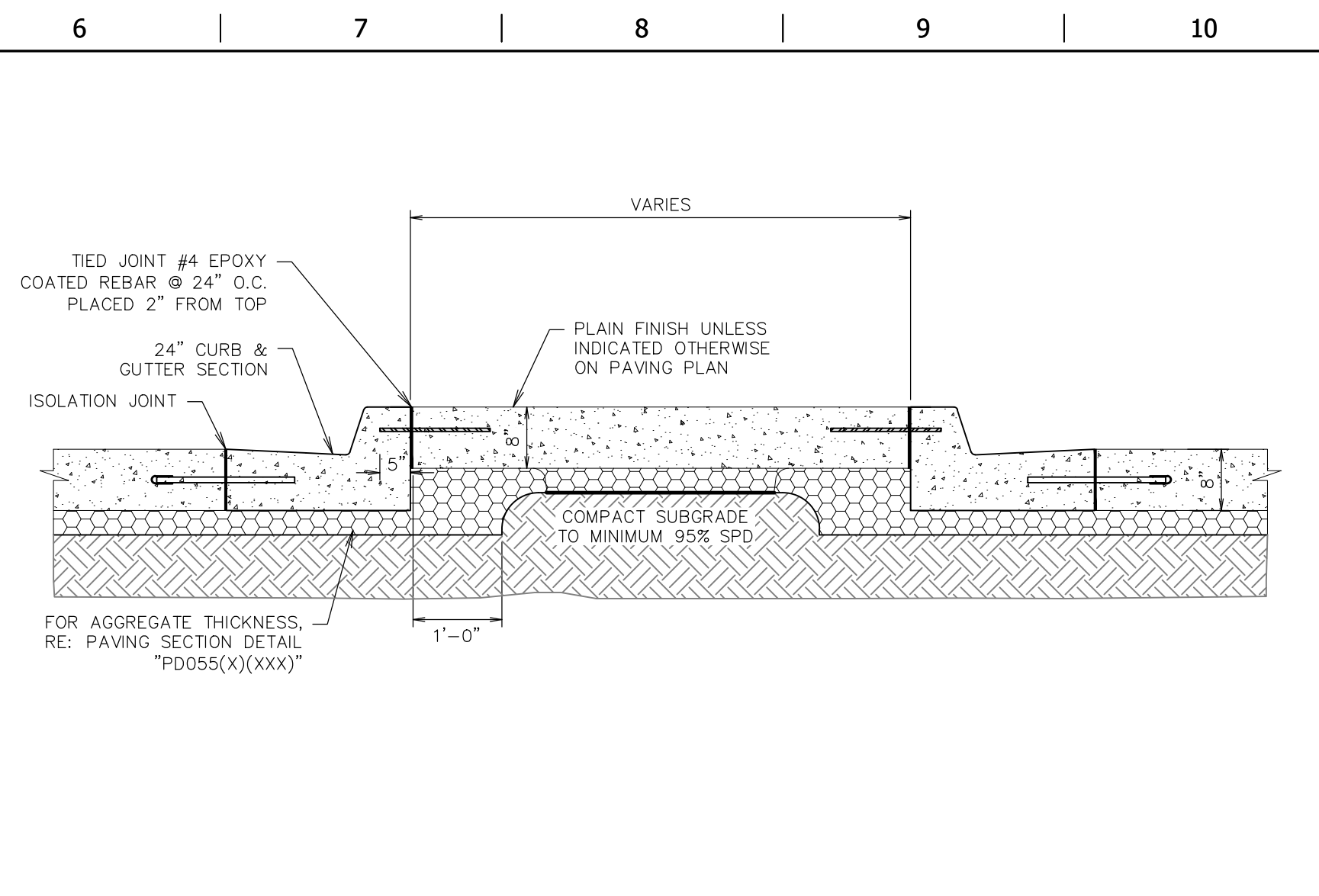


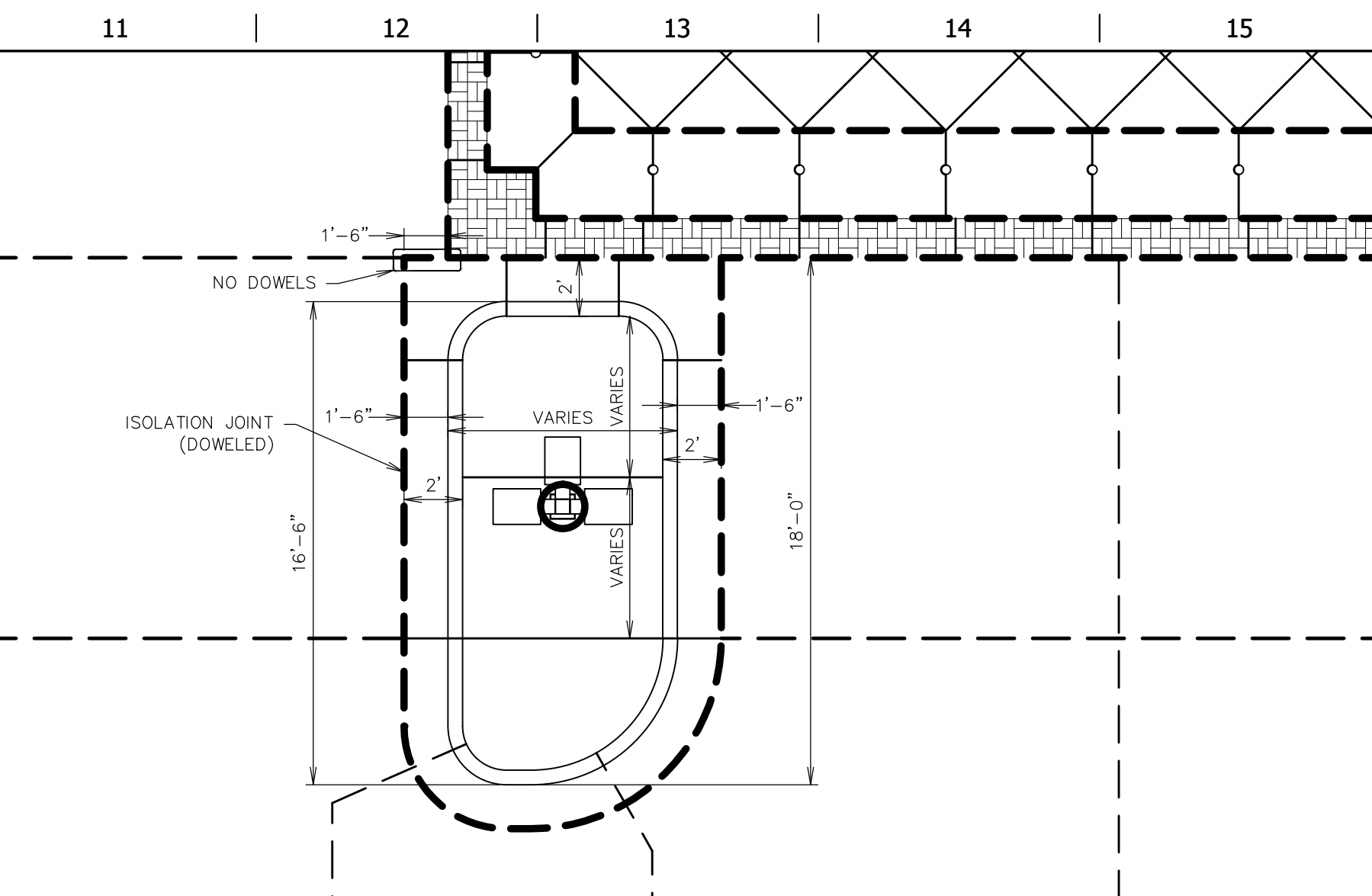
FILE LOCATION: K:\151054 - QuikTrip #0675 - Highway K and Fallon Parkway\Civil\06-0675 DETAILS PAVING.DWG, 9/15/2016 9:01:21 AM, DWG To PDF.pc3



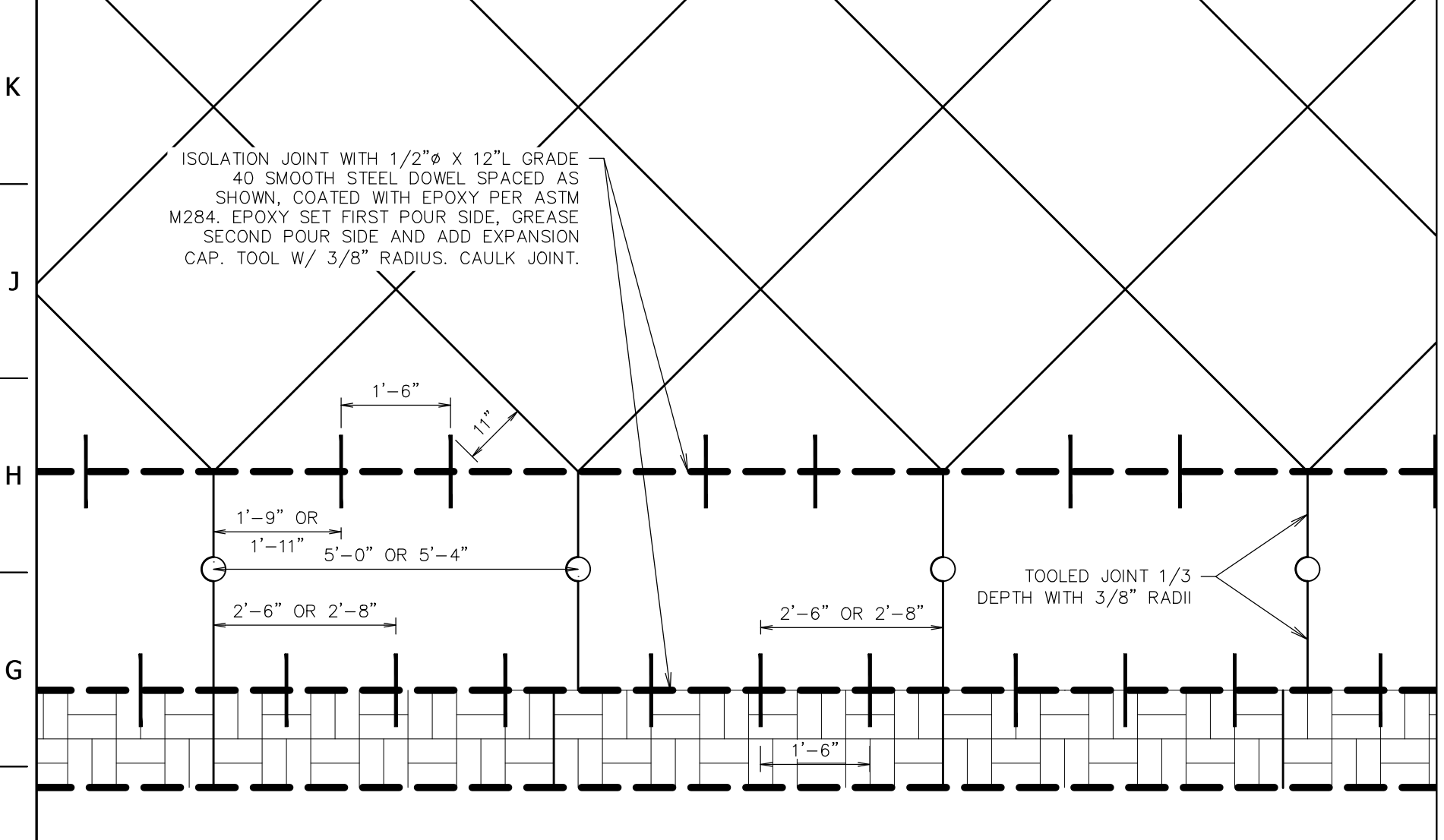
L1 GEN III SIDEWALK REINFORCING AT BUILDING CORNERS
NTS SN: PD022A006



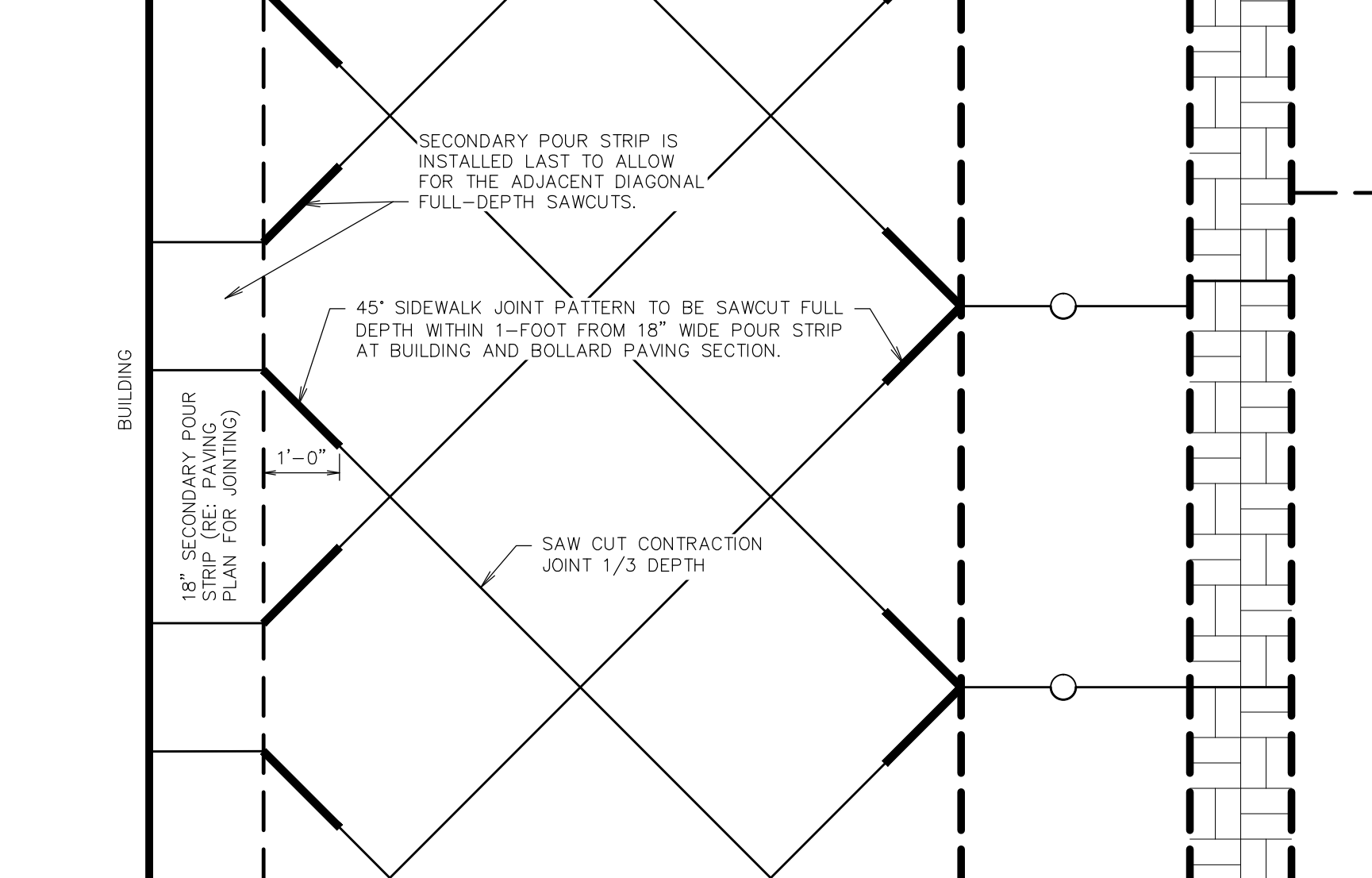
L6 ISLAND SECTION B-B
NTS SN: PD024A007



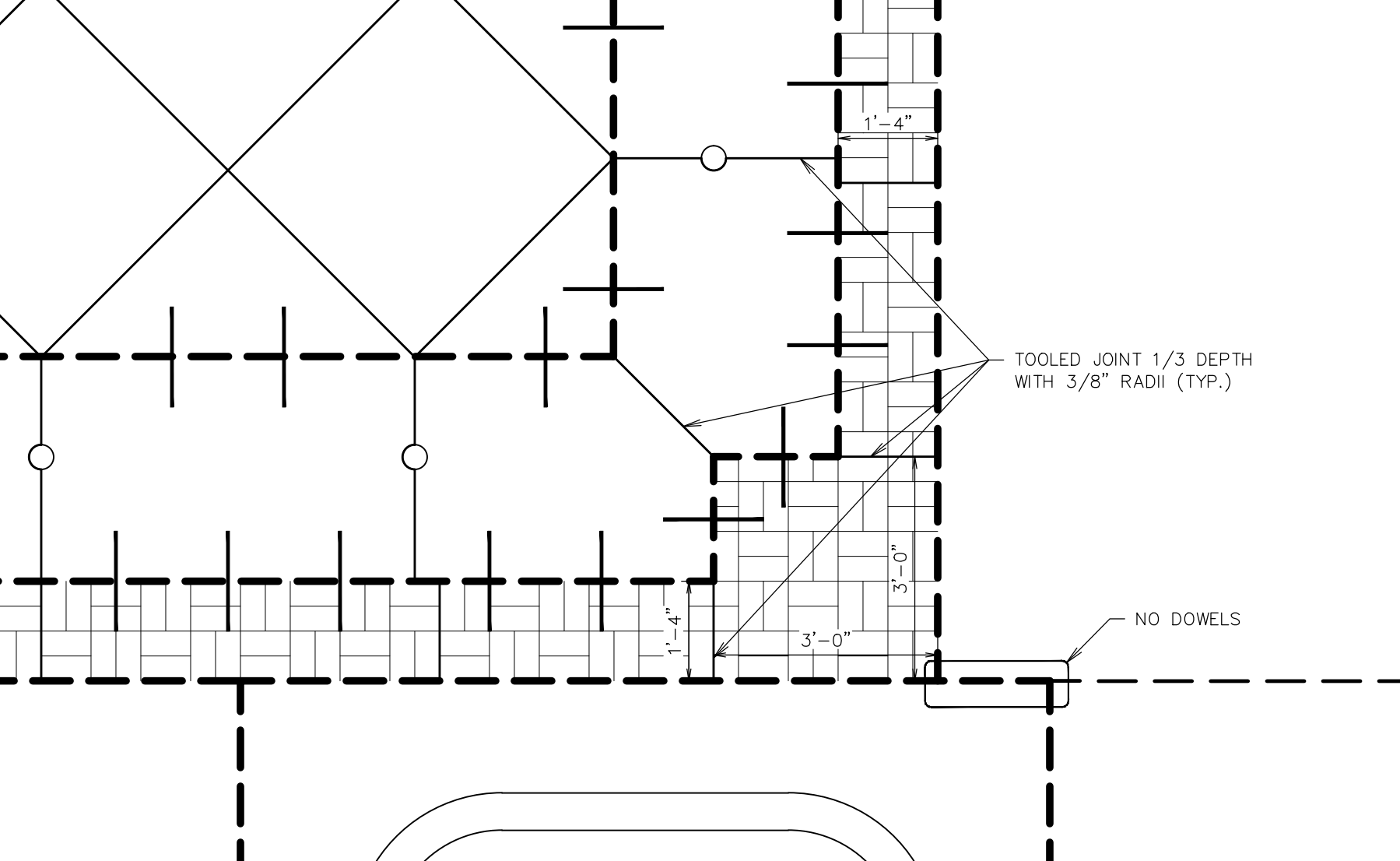
L11 TYPE A ISLAND JOINT DETAIL
NTS SN: PD035A006



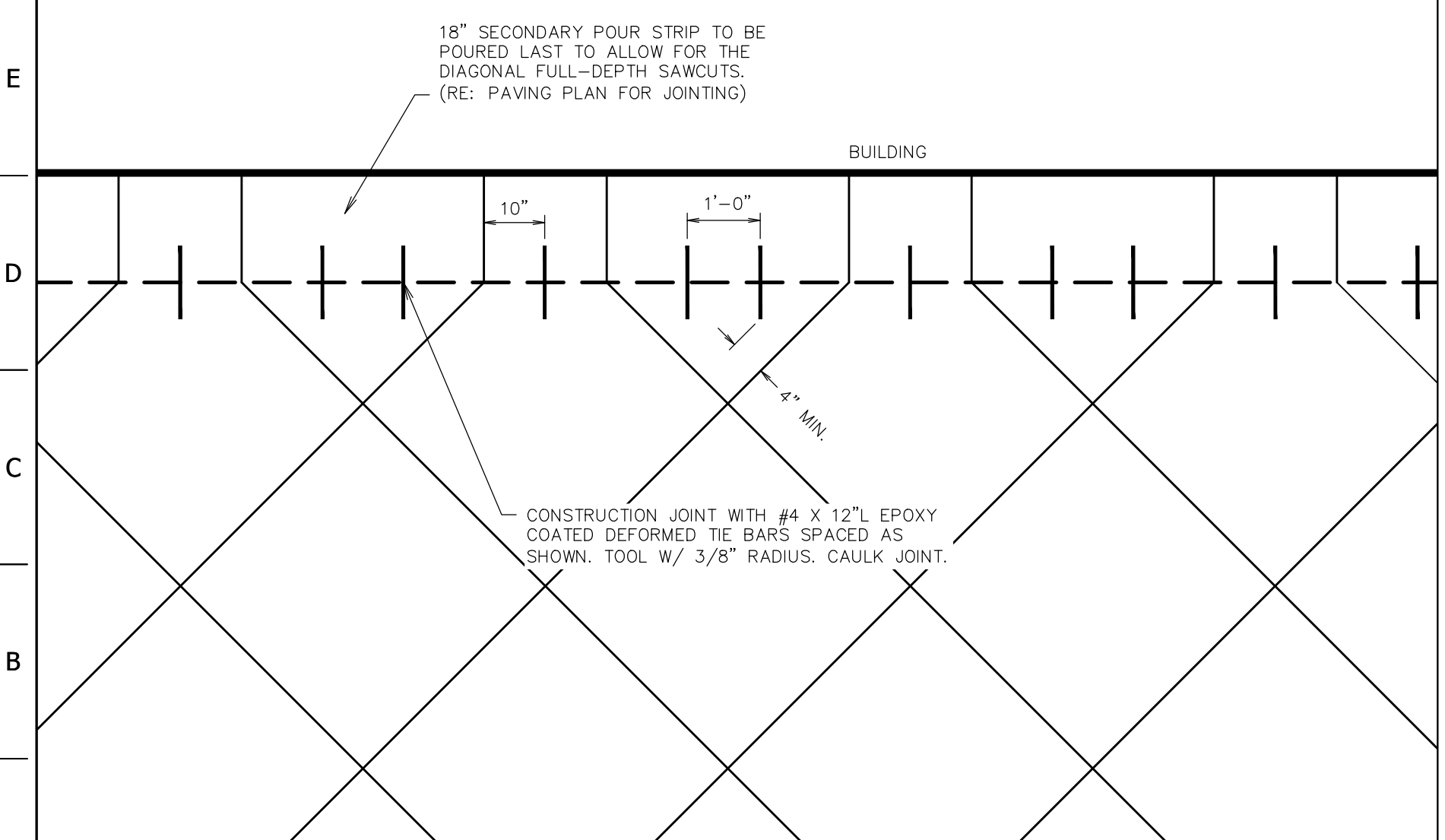
F1 DOWELED EXPANSION JOINTS AT BOLLARD PAVEMENT SECTION
NTS SN: PD036A002



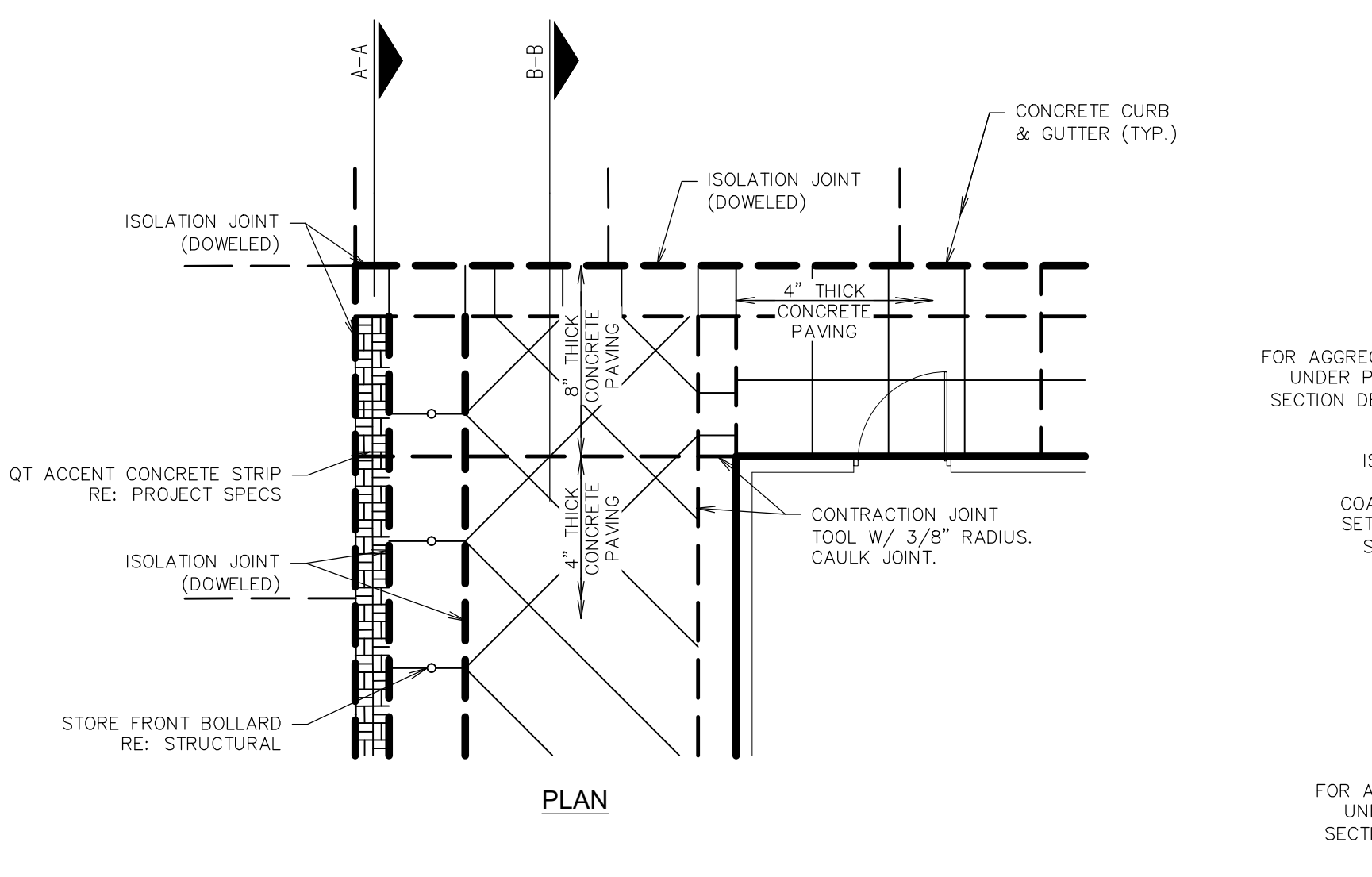
F6 45° SIDEWALK JOINT SAWCUT DETAIL
NTS SN: PD037A004



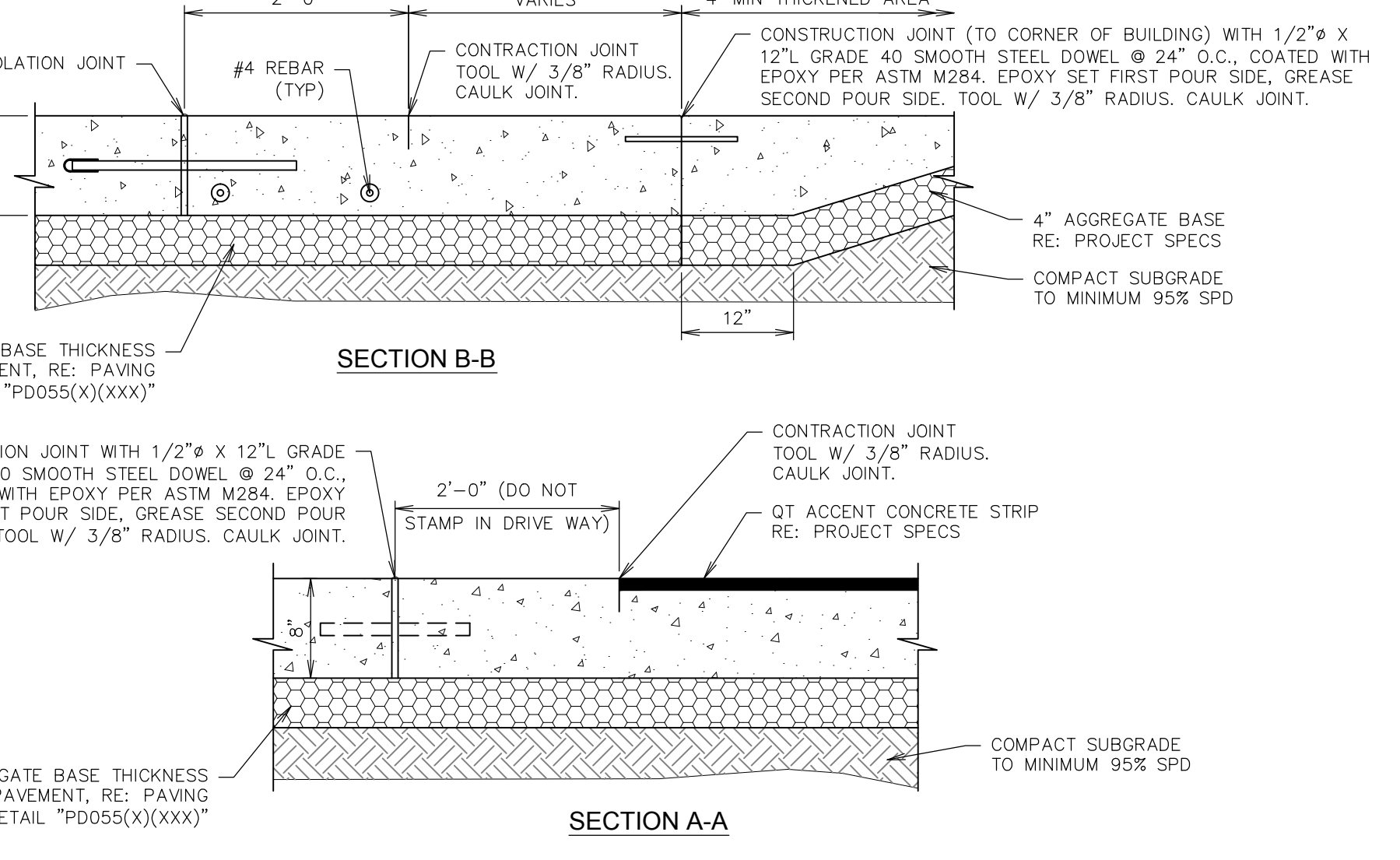
F11 FRONT SIDEWALK QT ACCENT CONCRETE STRIP CORNER DETAIL
NTS SN: PD038A003



A1 DOWELED JOINT BETWEEN POUR STRIP & FRONT SIDEWALK DETAIL
NTS SN: PD039A002



A6 GEN III QT ACCENT CONCRETE TERMINATION DETAIL
NTS SN: PD040A008



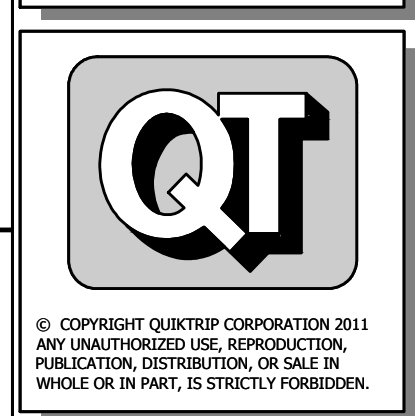
SECTION A-A
SECTION B-B



PROJECT NO.: 151054
NAME: MICHAEL J. VELLOFF
LICENSE NUMBER: E-2000161862
DISCIPLINE: CIVIL
CORPORATION AUTHORITY NUMBER: 601194

THE SEAL OF MICHAEL J. VELLOFF ON THIS DRAWING APPLIES ONLY TO THE CIVIL/SITE ENGINEERING SHOWN. IT DOES NOT APPLY, NOR IS ANY RESPONSIBILITY TAKEN FOR ENVIRONMENTAL, GEOTECHNICAL (INCLUDING BUT NOT LIMITED TO SLOPE STABILITY), STRUCTURAL, HVAC, PLUMBING, ELECTRICAL, FIRE PROTECTION, TRAFFIC ENGINEERING, SURVEYING (BOUNDARY AND TOPOGRAPHIC), OR ARCHITECTURAL (BUILDING OR LANDSCAPE).

QuikTrip No. 0675
140 FALLON LOOP ROAD
OF FALLON, MISSOURI 63368



PROTOTYPE: F-87
DIVISION: 06
VERSION: 001
DESIGNED BY: RKF
DRAWN BY: RKF
REVIEWED BY: MJV

REV	DATE	DESCRIPTION
1	09-15-16	CONSTRUCTION SET

SHEET TITLE:
PAVING DETAILS

SHEET NUMBER:
C522

ORIGINAL ISSUE DATE: 04-14-16