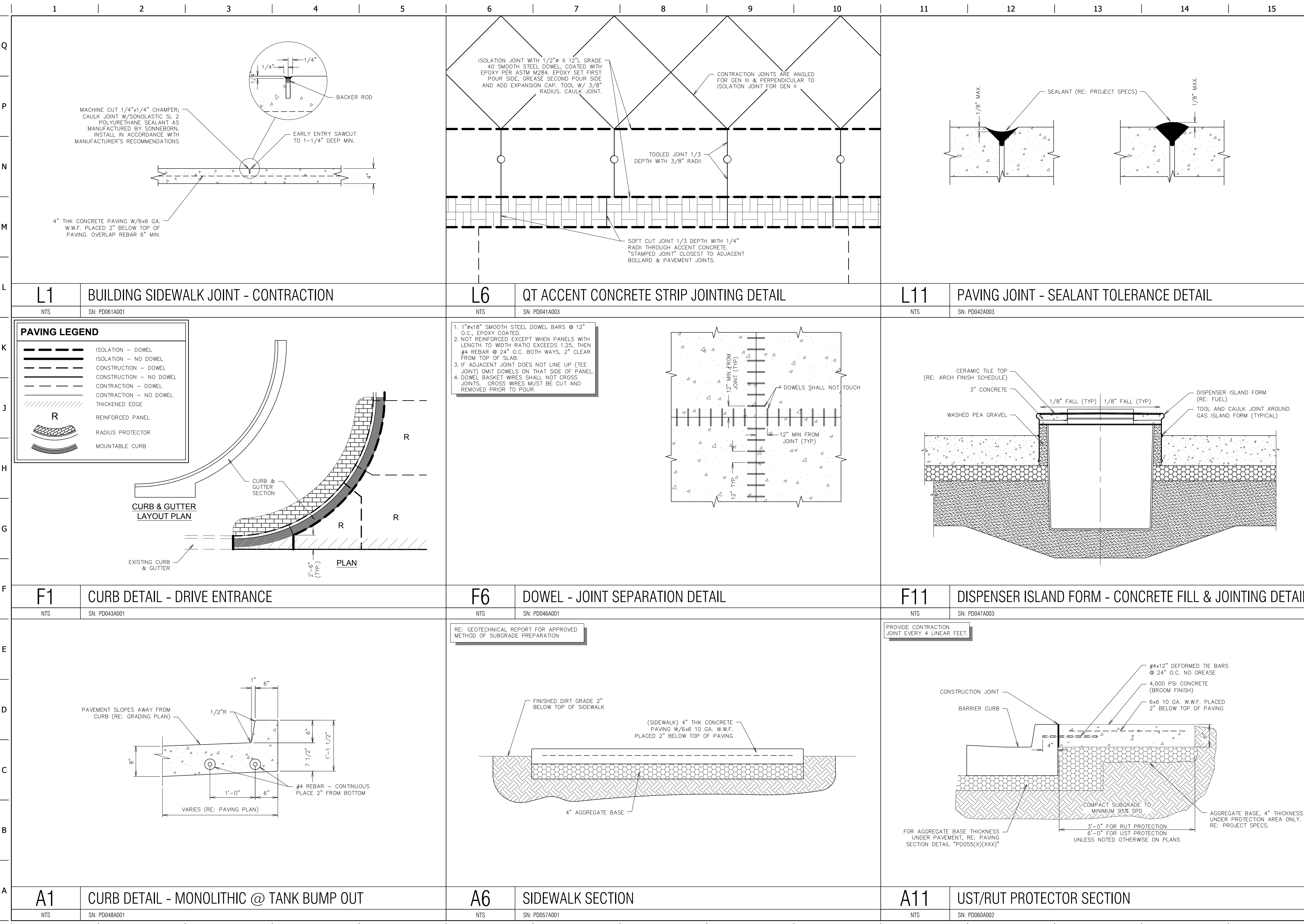


FILE LOCATION: K:\151054 - QuikTrip #0675 - Highway K and Fallon Parkway\Civil\06-0675 DETAILS PAVING.DWG, 9/15/2016 9:00:40 AM, DWG To PDF.pc3



**PAVING LEGEND**

	ISOLATION - DOWEL
	ISOLATION - NO DOWEL
	CONSTRUCTION - DOWEL
	CONSTRUCTION - NO DOWEL
	CONTRACTION - DOWEL
	CONTRACTION - NO DOWEL
	THICKENED EDGE
	REINFORCED PANEL
	RADIUS PROTECTOR
	MOUNTABLE CURB

1. 1" x 18" SMOOTH STEEL DOWEL BARS @ 12" O.C., EPOXY COATED.
2. NOT REINFORCED EXCEPT WHEN PANELS WITH LENGTH TO WIDTH RATIO EXCEEDS 1.25, THEN #4 REBAR @ 24" O.C. BOTH WAYS, 2" CLEAR FROM TOP OF SLAB.
3. IF ADJACENT JOINT DOES NOT LINE UP (TEE JOINT) OMIT DOWELS ON THAT SIDE OF PANEL.
4. DOWEL BASKET WIRES SHALL NOT CROSS JOINTS. CROSS WIRES MUST BE CUT AND REMOVED PRIOR TO POUR.

**PROJECT NO.: 151054**  
NAME: MICHAEL J. VELLOFF  
LICENSE NUMBER: E-2000161862  
DISCIPLINE: CIVIL  
CORPORATION AUTHORITY NUMBER: 601194

THE SEAL OF MICHAEL J. VELLOFF ON THIS DRAWING APPLIES ONLY TO THE CIVIL/SITE ENGINEERING SHOWN. IT DOES NOT APPLY, NOR IS ANY RESPONSIBILITY TAKEN FOR ENVIRONMENTAL, GEOTECHNICAL (INCLUDING BUT NOT LIMITED TO SLOPE STABILITY), STRUCTURAL, HVAC, PLUMBING, ELECTRICAL, FIRE PROTECTION, TRAFFIC ENGINEERING, SURVEYING (BOUNDARY AND TOPOGRAPHIC), OR ARCHITECTURAL (BUILDING OR LANDSCAPE).

---

**QuikTrip No. 0675**  
140 FALLON LOOP ROAD  
OF FALLON, MISSOURI 63368

---

© COPYRIGHT QUIKTRIP CORPORATION 2011  
ANY UNAUTHORIZED USE, REPRODUCTION, PUBLICATION, DISTRIBUTION, OR SALE IN WHOLE OR IN PART, IS STRICTLY FORBIDDEN.

PROTOTYPE: F-87
DIVISION: 06
VERSION: 001
DESIGNED BY: RKF
DRAWN BY: RKF
REVIEWED BY: MJV

---

REV	DATE	DESCRIPTION

---

SHEET TITLE:  
PAVING DETAILS

---

SHEET NUMBER:  
**C523**

ORIGINAL ISSUE DATE: 04-14-16