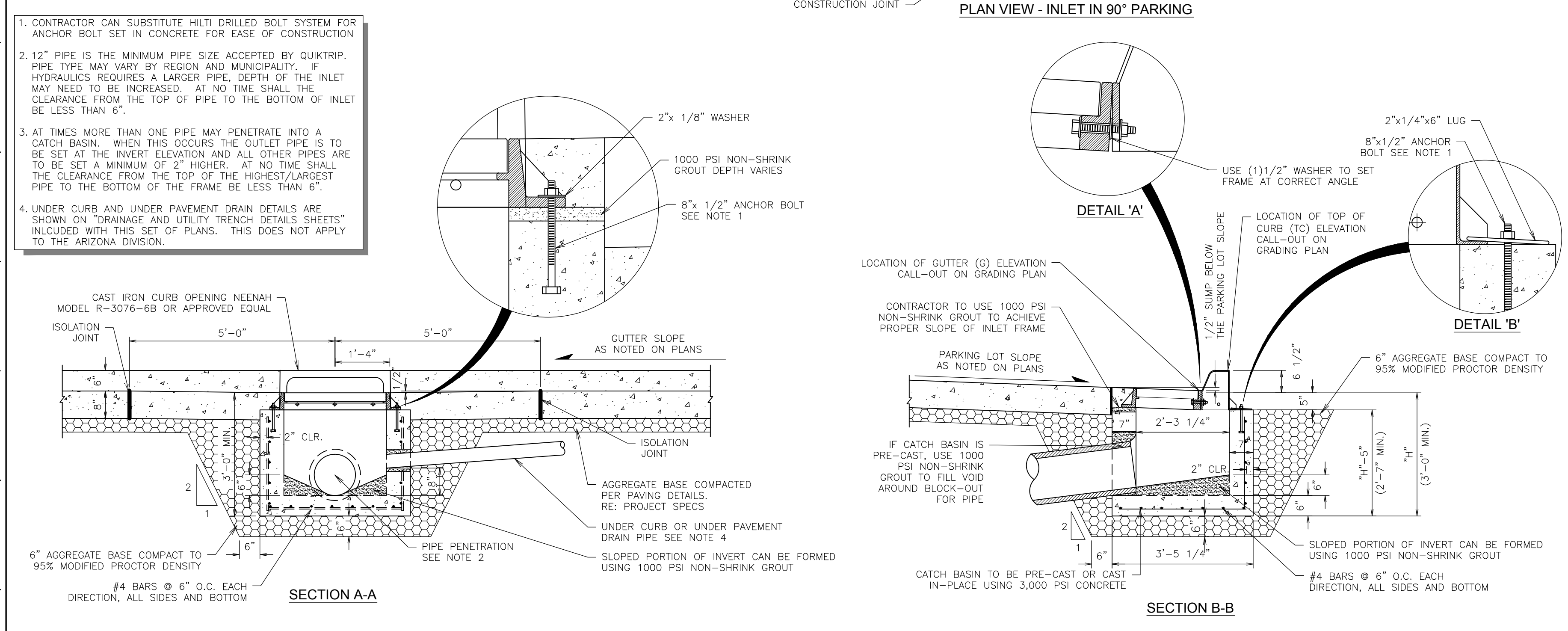
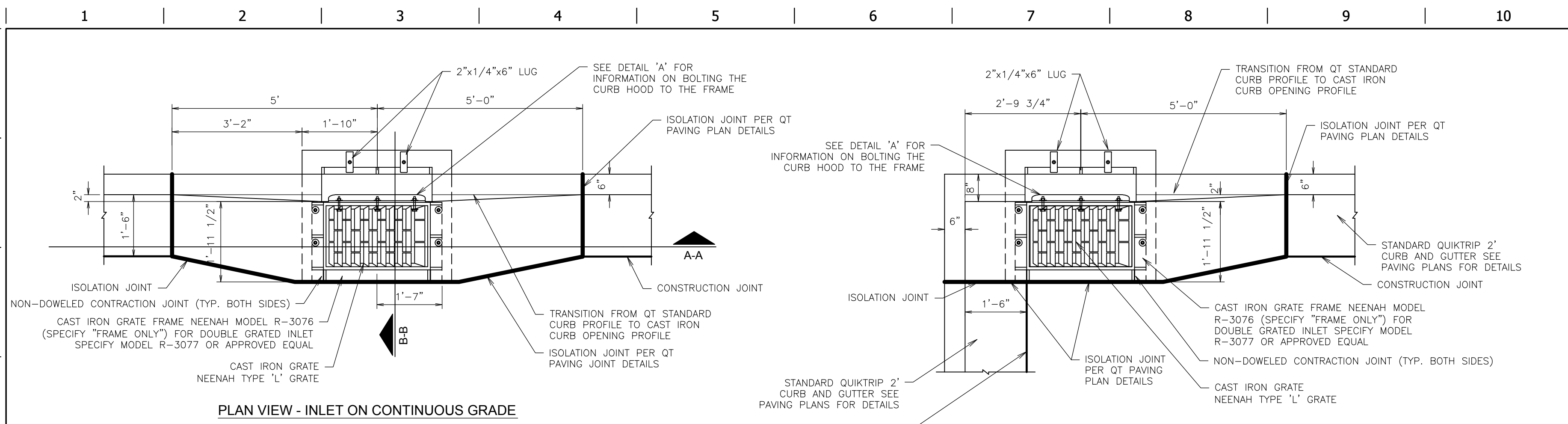
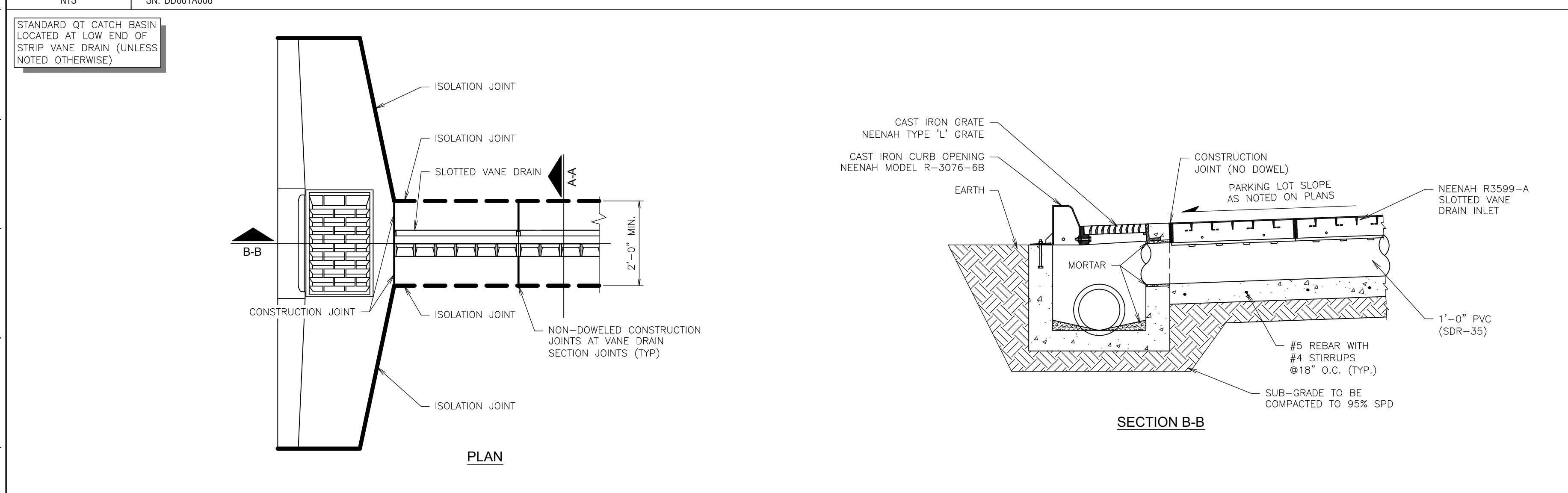


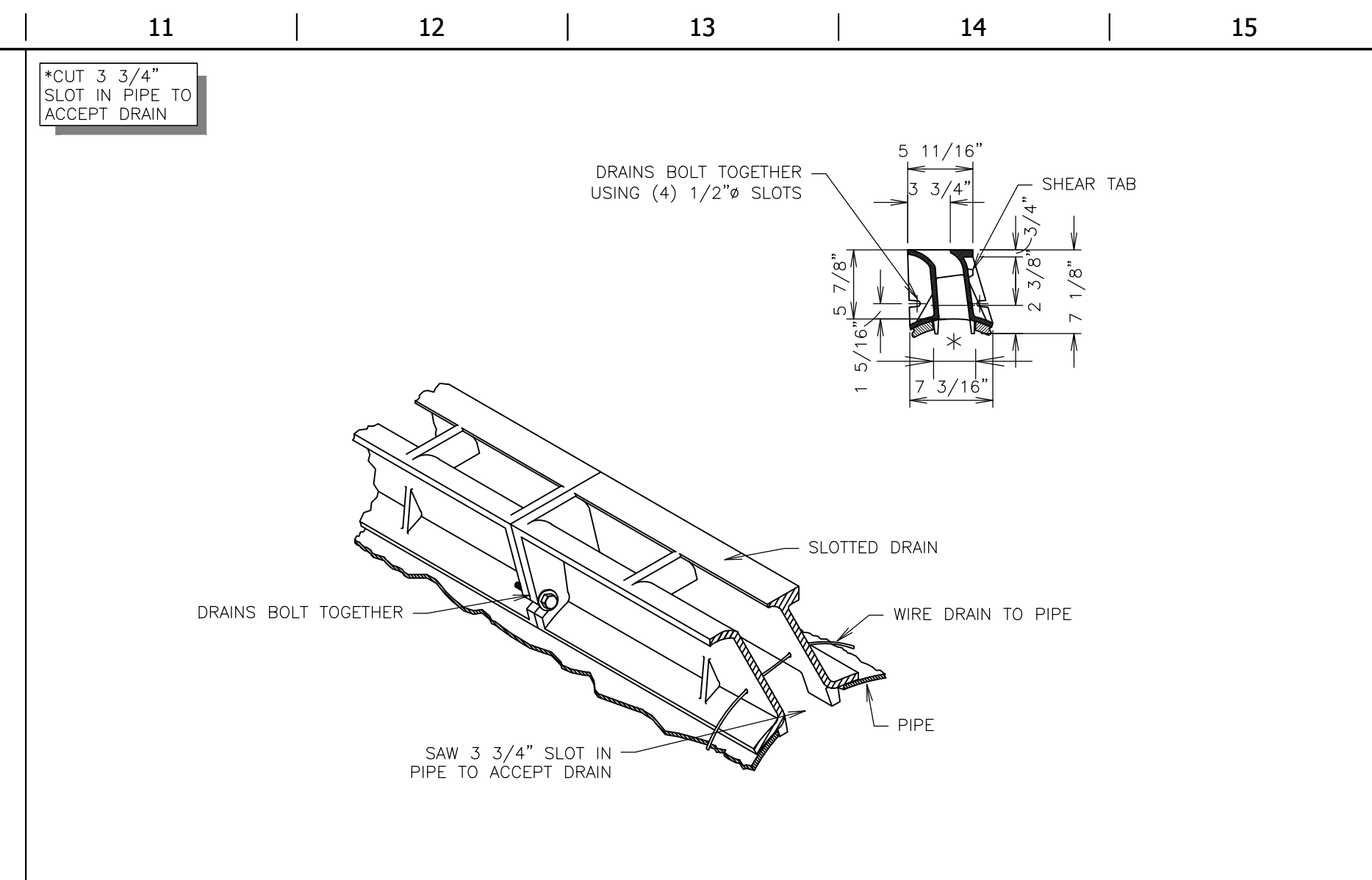
FILE LOCATION: \\151054 - QuikTrip #0675 - Highway K and Fallon Parkway\Civil\06-0675 DETAILS DRAINAGE\Sheet 1 USR:rkf:ryer - SAV:ED/2/1/2016 2:42 PM PLOTTED:9/15/2016 8:51 AM



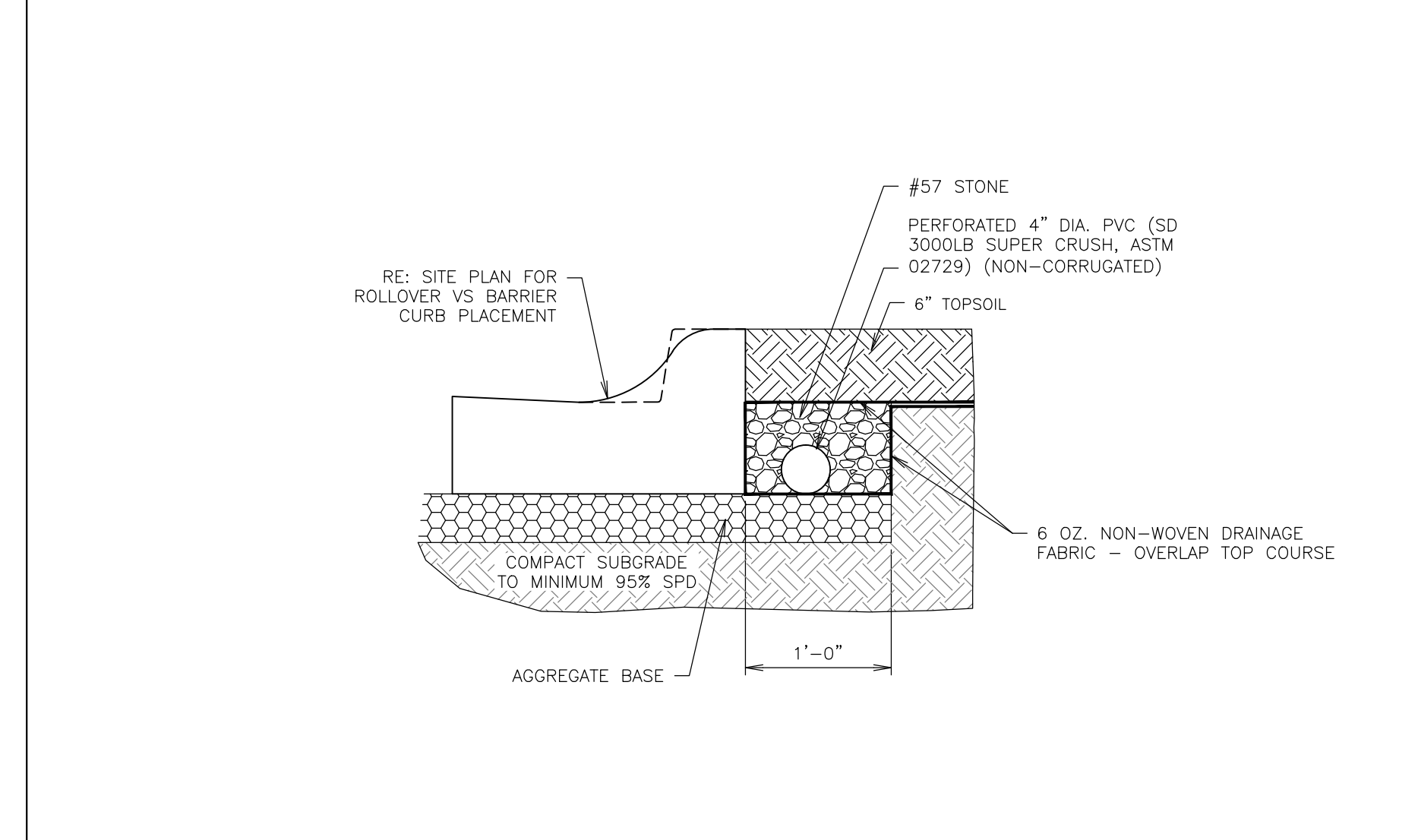
F1 CATCH BASIN INLET DETAIL (SINGLE)
NTS SN: DD001A008



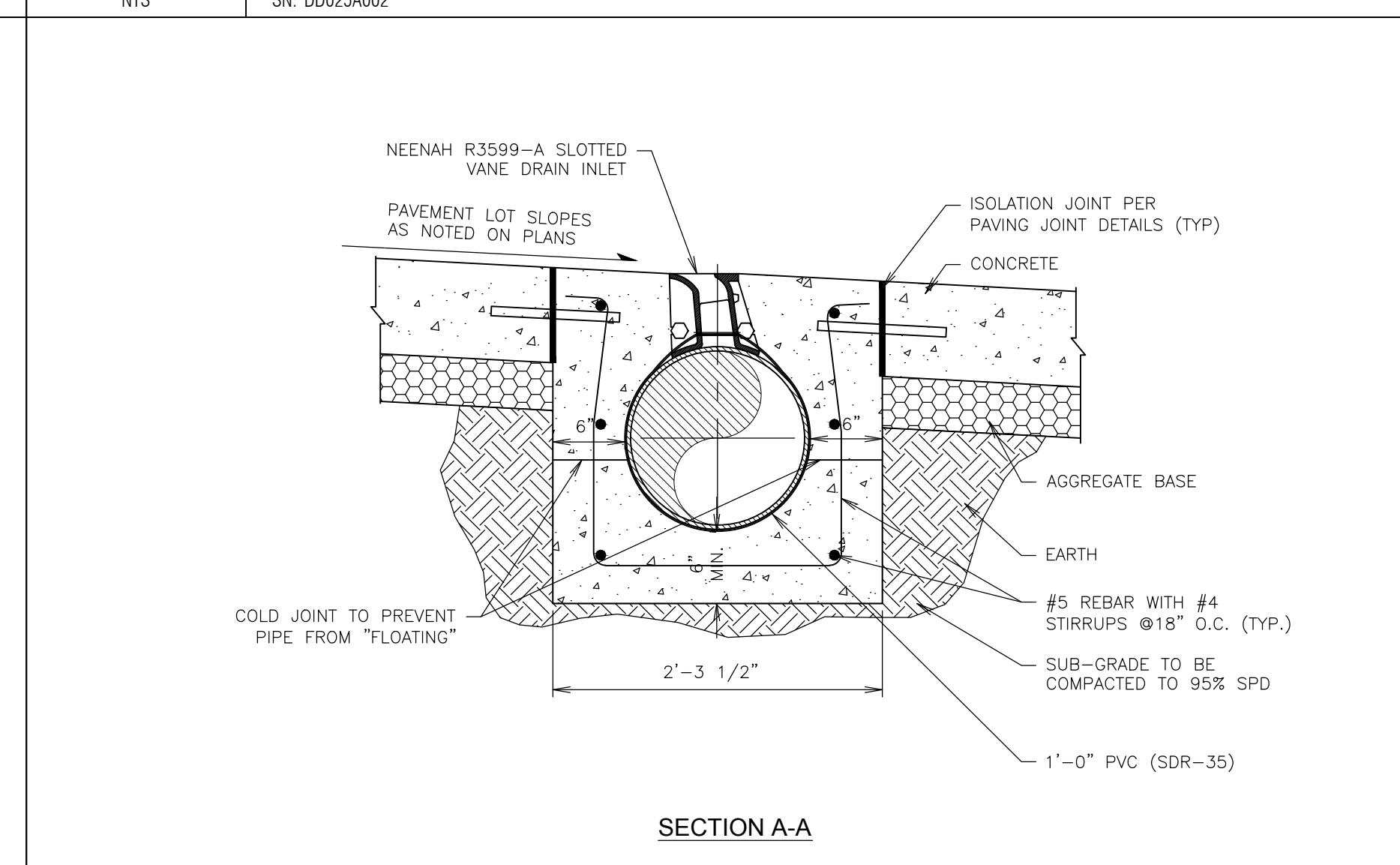
A1 SLOTTED VANE DRAIN INSTALLATION @ CATCH BASIN DETAIL
NTS SN: DD004A004



L11 SLOTTED VANE DRAIN (ISOMETRIC VIEW)
NTS SN: DD007A003



F11 BACK OF CURB DRAIN SECTION
NTS SN: DD025A002



A11 SLOTTED VANE DRAIN INSTALLATION CROSS SECTION "A-A"
NTS SN: DD006A005

PROJECT NO. 151054
NAME: MICHAEL J. VELLOFF
LICENSE NUMBER: E-2000161862
DISCIPLINE: CIVIL
CORPORATION AUTHORITY NUMBER: 601194

THE SEAL OF MICHAEL J. VELLOFF ON THIS DRAWING APPLIES ONLY TO THE CIVIL/SITE ENGINEERING SHOWN. IT DOES NOT APPLY, NOR IS ANY RESPONSIBILITY TAKEN FOR ENVIRONMENTAL, GEOTECHNICAL (INCLUDING BUT NOT LIMITED TO SLOPE STABILITY), STRUCTURAL, HVAC, PLUMBING, ELECTRICAL, FIRE PROTECTION, TRAFFIC ENGINEERING, SURVEYING (BOUNDARY AND TOPOGRAPHIC), OR ARCHITECTURAL (BUILDING OR LANDSCAPE).

QuikTrip No. 0675
140 FALLON LOOP ROAD
OF FALLON, MISSOURI 63368

© COPYRIGHT QUIKTRIP CORPORATION 2011
ANY UNAUTHORIZED USE, REPRODUCTION, PUBLICATION, DISTRIBUTION, OR SALE IN WHOLE OR IN PART, IS STRICTLY FORBIDDEN.

PROTOTYPE: P-87	DIVISION: 06
VERSION: 001	DESIGNED BY: RKF
DRAWN BY: RKF	REVIEWED BY: MJV

SHEET TITLE:	ORIGINAL ISSUE DATE: 04-14-16
DRAINAGE DETAILS	
SHEET NUMBER:	C540