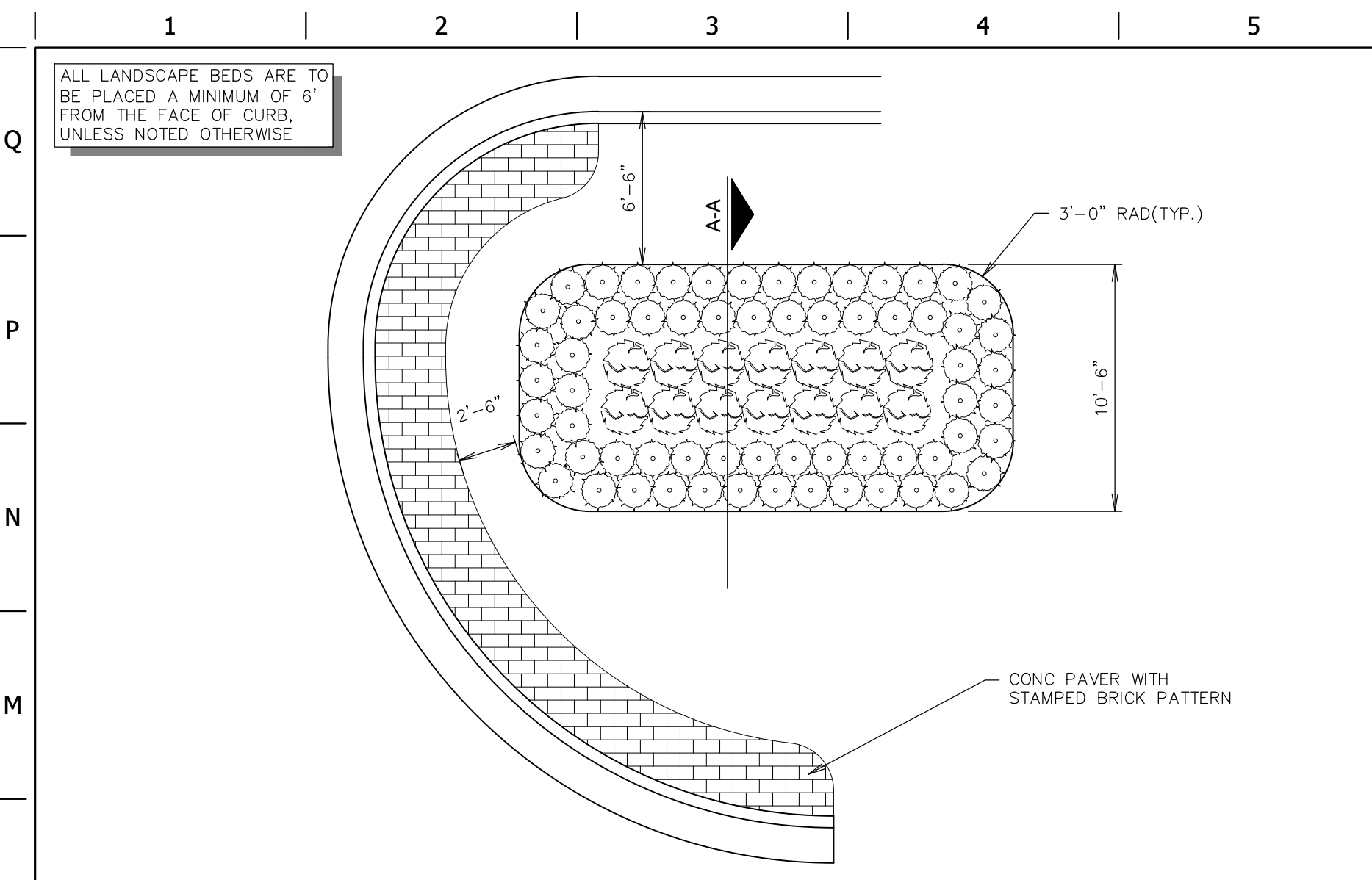
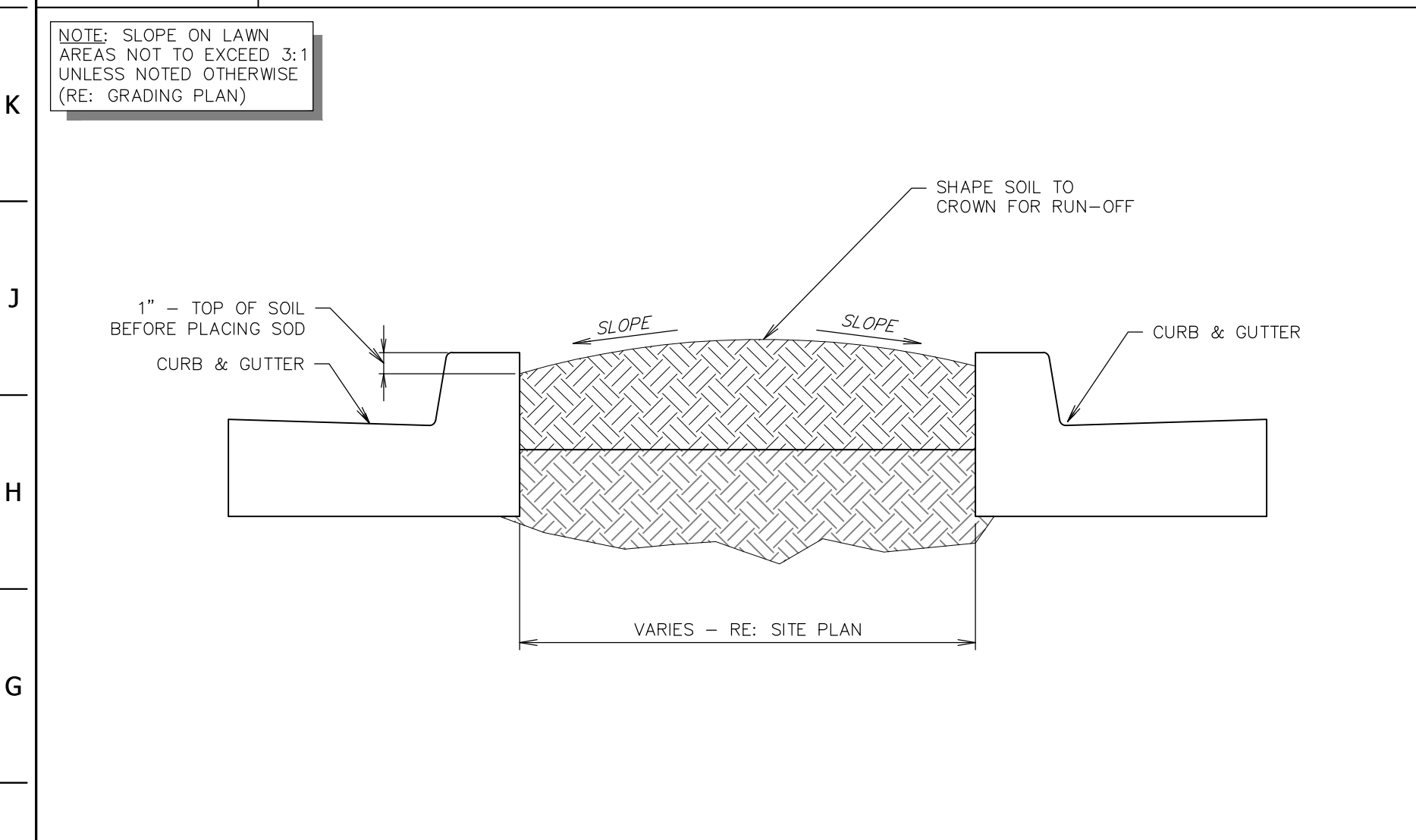


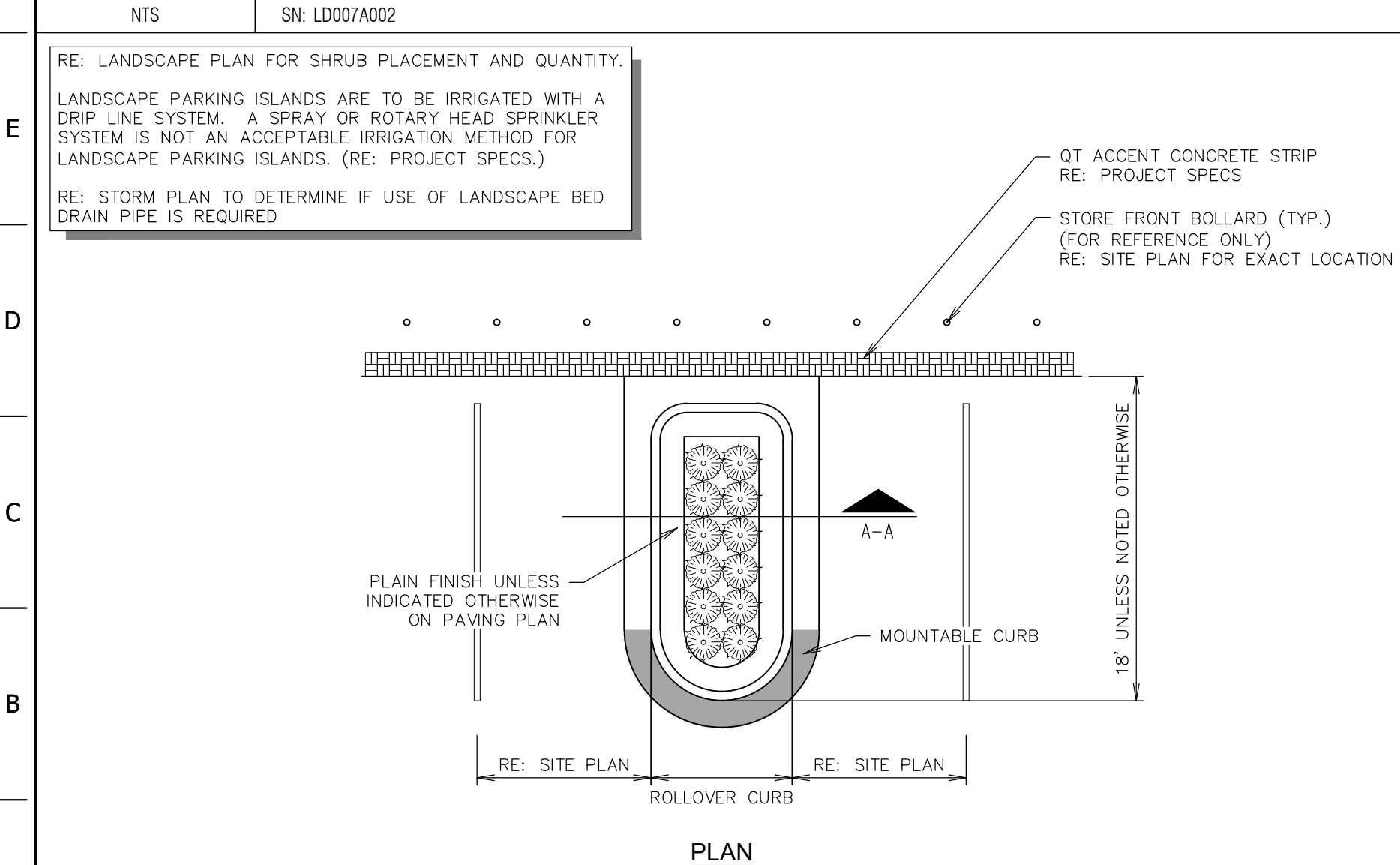
FILE LOCATION: K:\151054 - QuikTrip #0675 - Highway K and Fallon Parkway\Civil\06-0675 DETAILS LS.dwg, 9/15/2016 8:55:48 AM, DWG To PDF.pc3



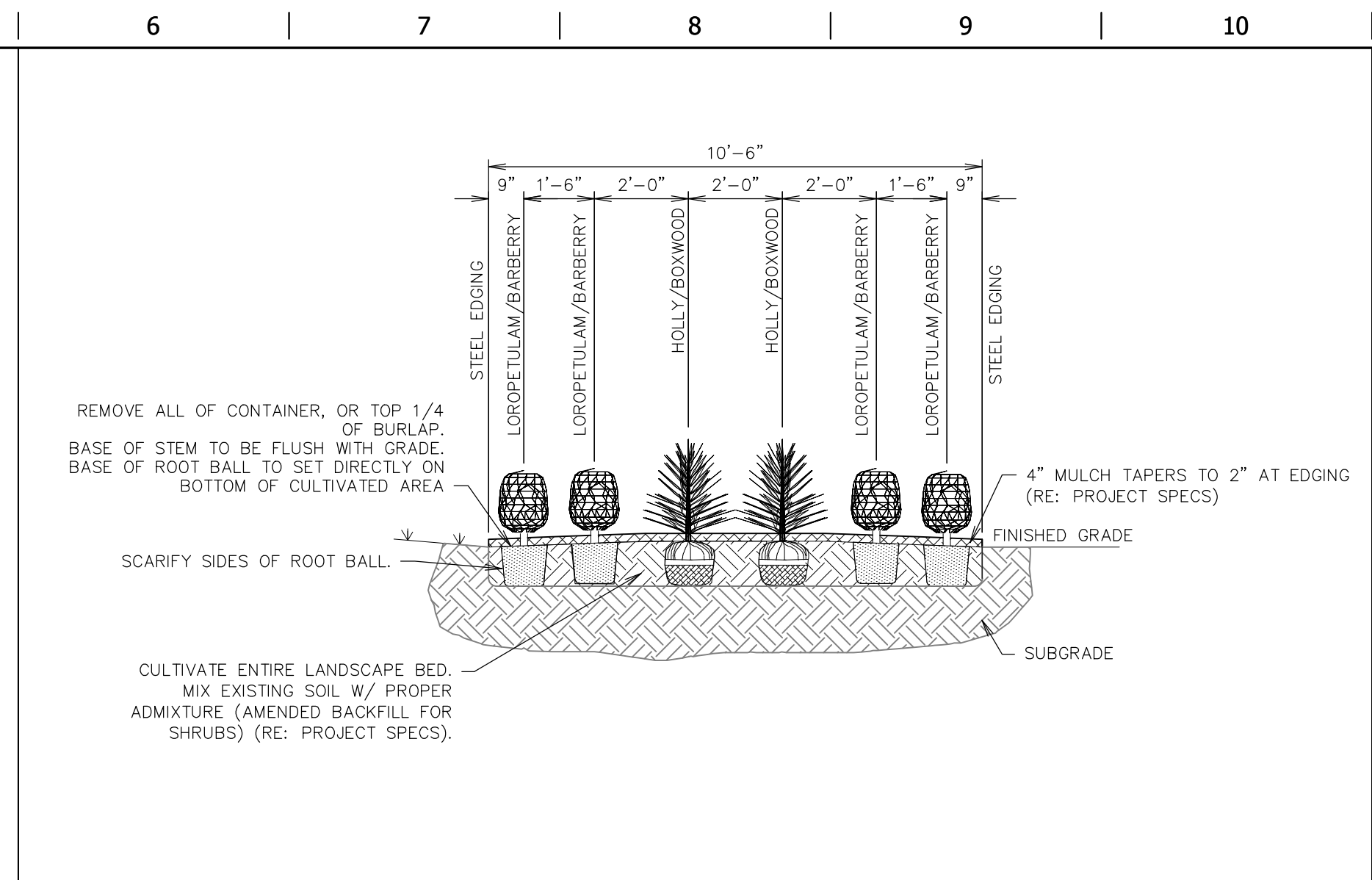
L1 LANDSCAPE BED TYPE "A"
NTS SN: LD001A004



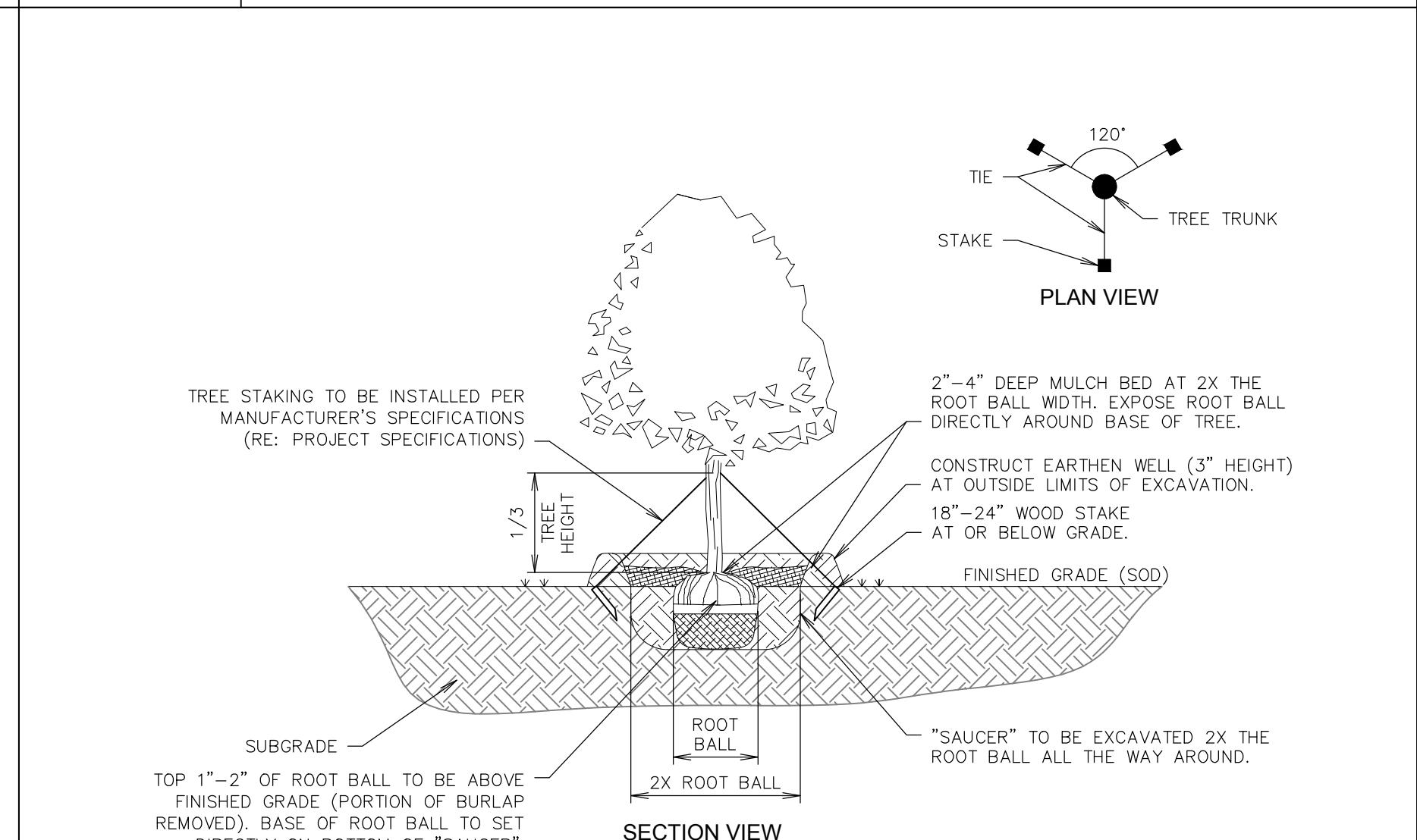
F1 TYPICAL LAWN SECTION
NTS SN: LD007A002



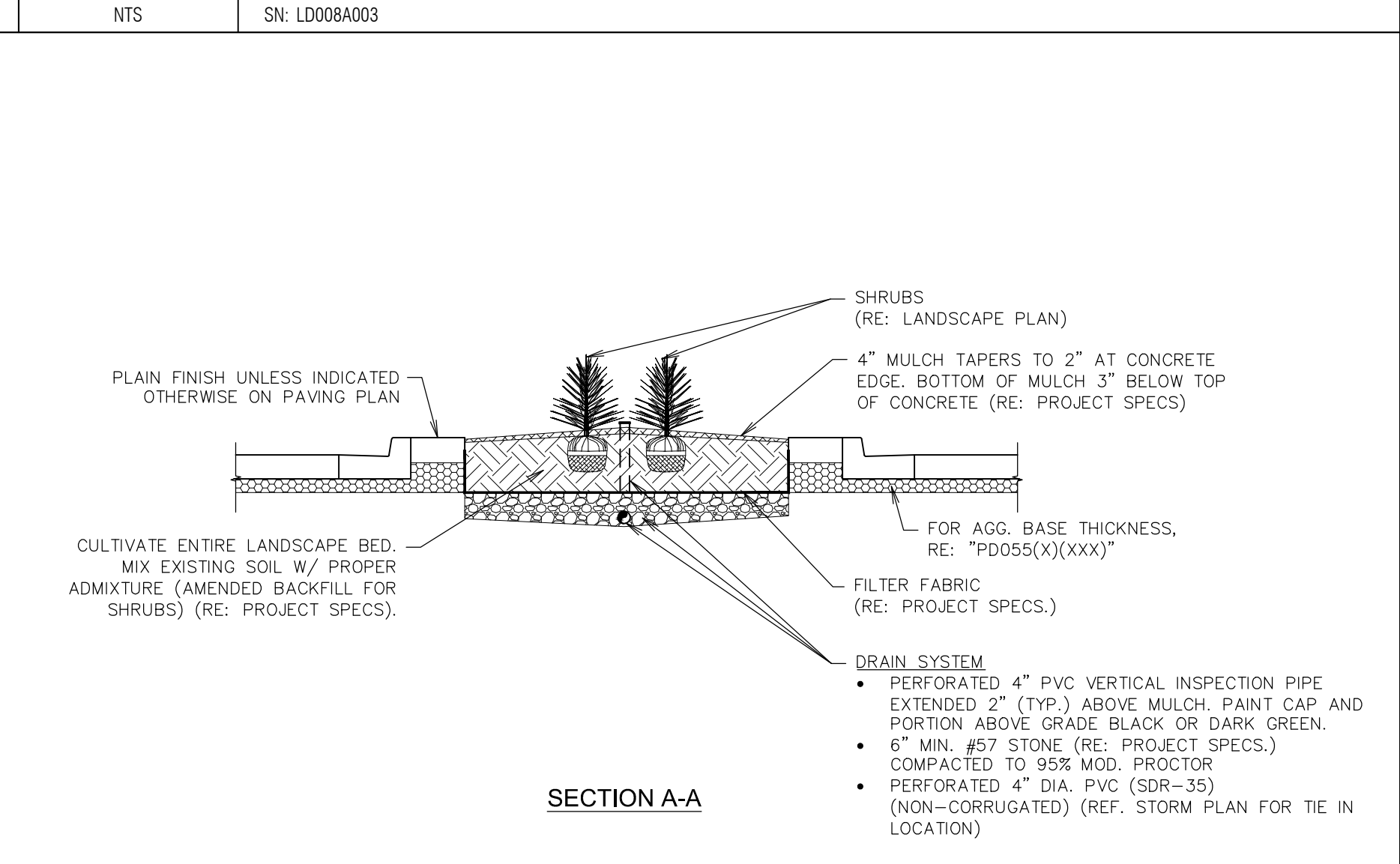
A1 PARKING ISLAND W/ SHRUBS LANDSCAPE DETAIL (W/ RADIUS PROTECTOR)
NTS SN: LD009A010



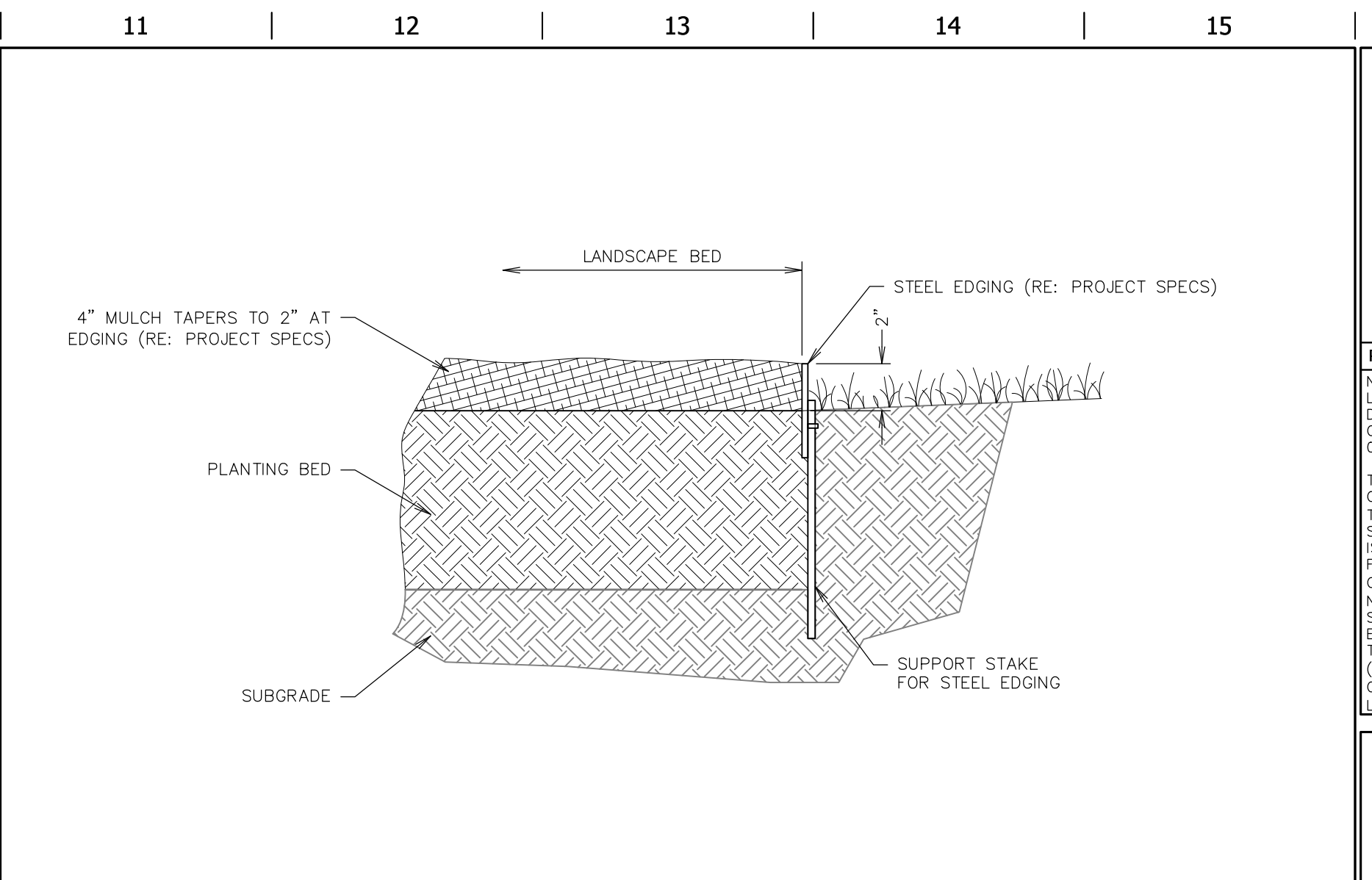
L6 SHRUB PLANTING SECTION A-A
NTS SN: LD003A005



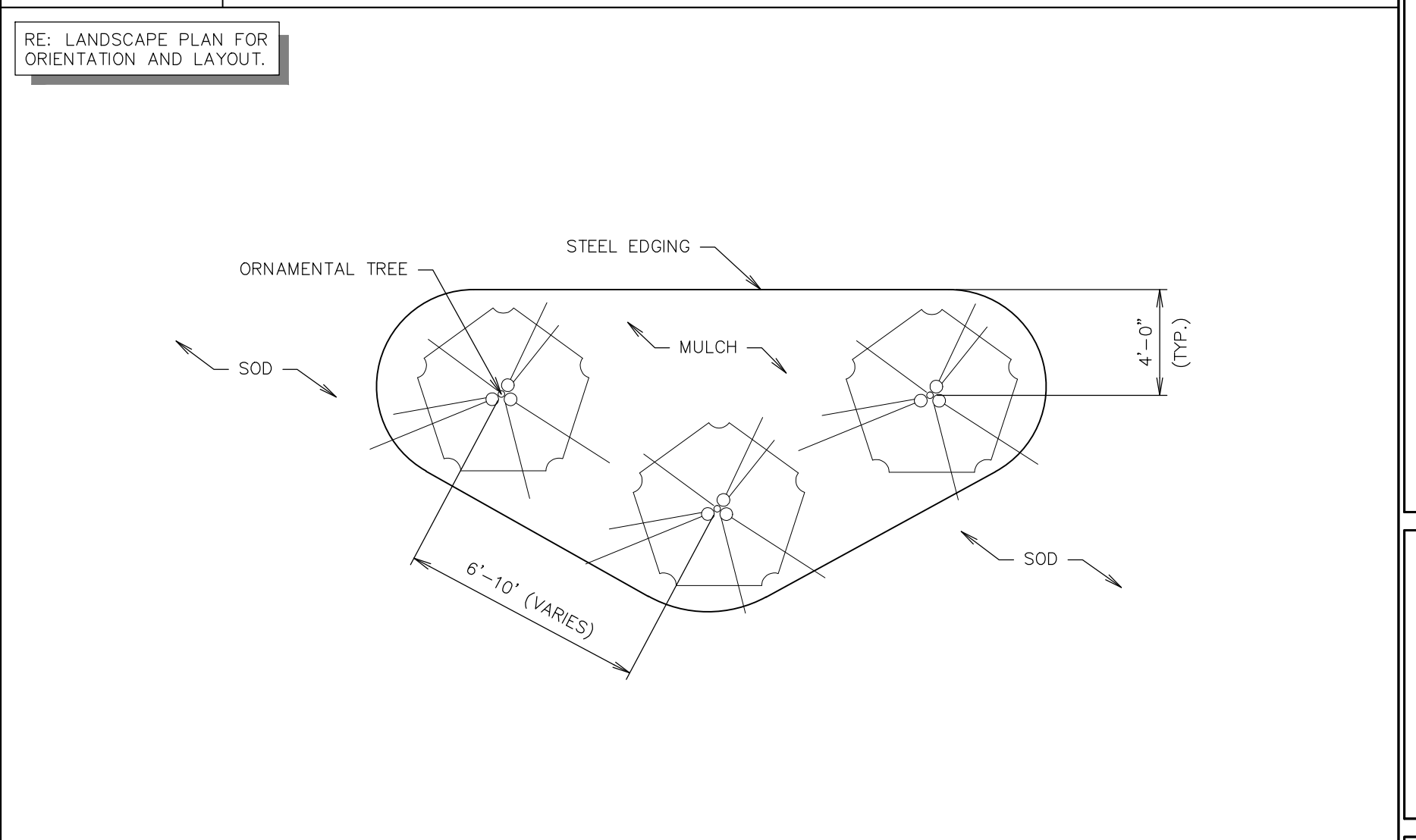
F6 TREE PLANTING DETAIL
NTS SN: LD008A003



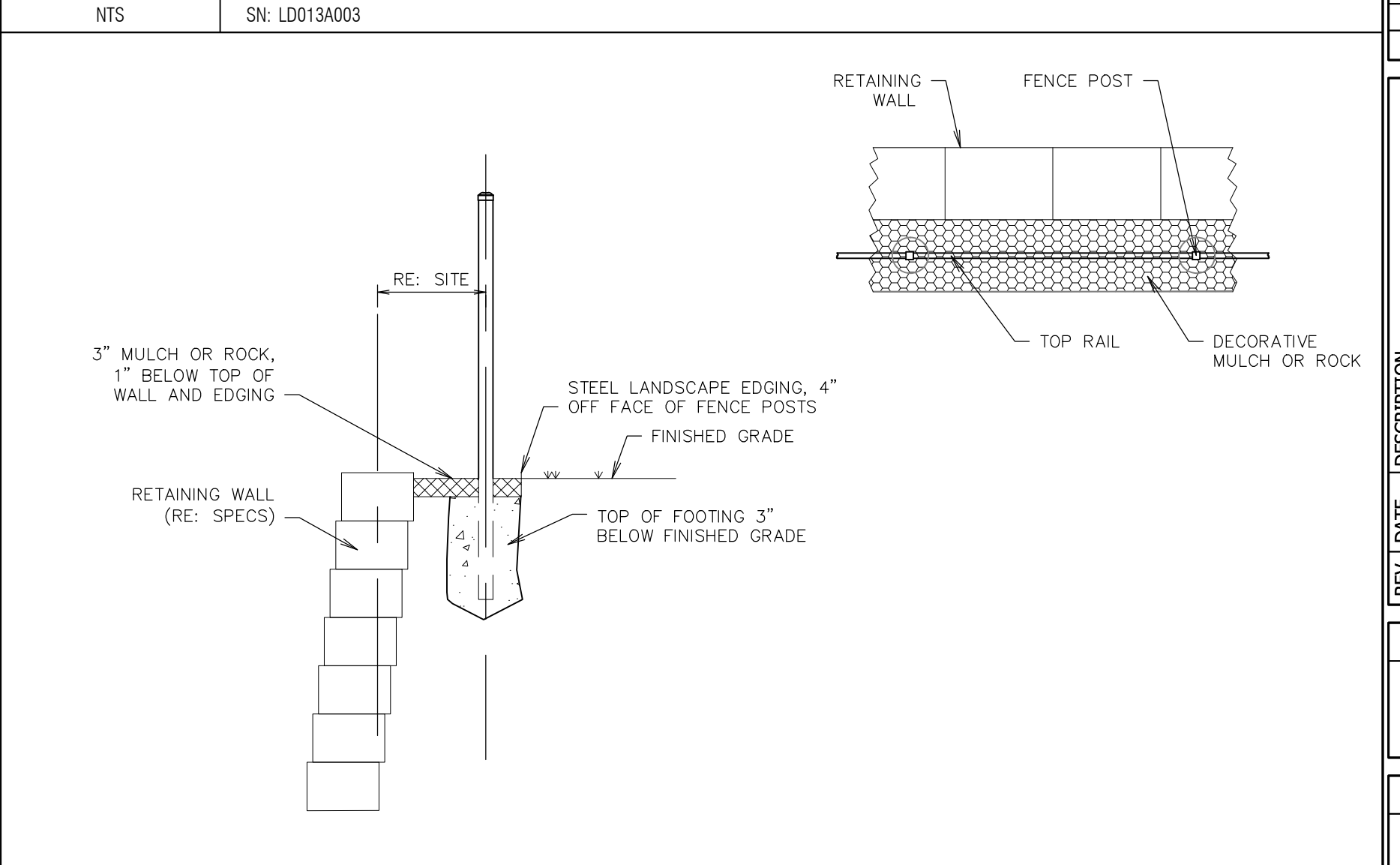
A11 LS EDGING ADJACENT TO WALL GUARDRAIL DETAIL
NTS SN: LD024A002



L11 LANDSCAPE STEEL EDGING DETAIL
NTS SN: LD006A004



F11 ORNAMENTAL TREE GROUPING DETAIL
NTS SN: LD013A003



A11 LS EDGING ADJACENT TO WALL GUARDRAIL DETAIL
NTS SN: LD024A002

PROJECT NO. 151054
NAME: MICHAEL J. VELLOFF
LICENSE NUMBER: E-2000161862
DISCIPLINE: CIVIL
CORPORATION AUTHORITY NUMBER: 001194

THE SEAL OF MICHAEL J. VELLOFF ON THIS DRAWING APPLIES ONLY TO THE CIVIL/SITE ENGINEERING SHOWN. IT DOES NOT APPLY, NOR IS ANY RESPONSIBILITY TAKEN FOR ENVIRONMENTAL, GEOTECHNICAL (INCLUDING BUT NOT LIMITED TO SLOPE STABILITY), STRUCTURAL, HVAC, PLUMBING, ELECTRICAL, FIRE PROTECTION, TRAFFIC ENGINEERING, SURVEYING (BOUNDARY AND TOPOGRAPHIC), OR ARCHITECTURAL (BUILDING OR LANDSCAPE).

QuikTrip No. 0675
140 FALLON LOOP ROAD
OF FALLON, MISSOURI 63368

© COPYRIGHT QUIKTRIP CORPORATION 2011
ANY UNAUTHORIZED USE, REPRODUCTION, PUBLICATION, DISTRIBUTION, OR SALE IN WHOLE OR IN PART, IS STRICTLY FORBIDDEN.

PROTOTYPE:	P-87
DIVISION:	06
VERSION:	001
DESIGNED BY:	RKF
DRAWN BY:	RKF
REVIEWED BY:	MJV

REV	DATE	DESCRIPTION
1	09-15-16	CONSTRUCTION SET

ORIGINAL ISSUE DATE: 04-14-16

SHEET TITLE:
LANDSCAPE DETAILS

SHEET NUMBER:
L500