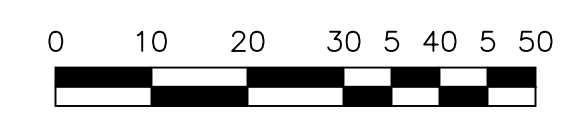
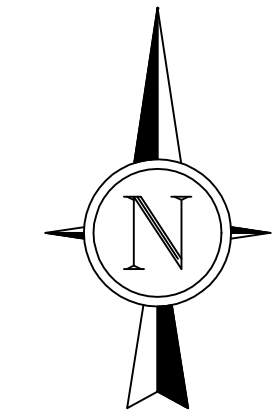
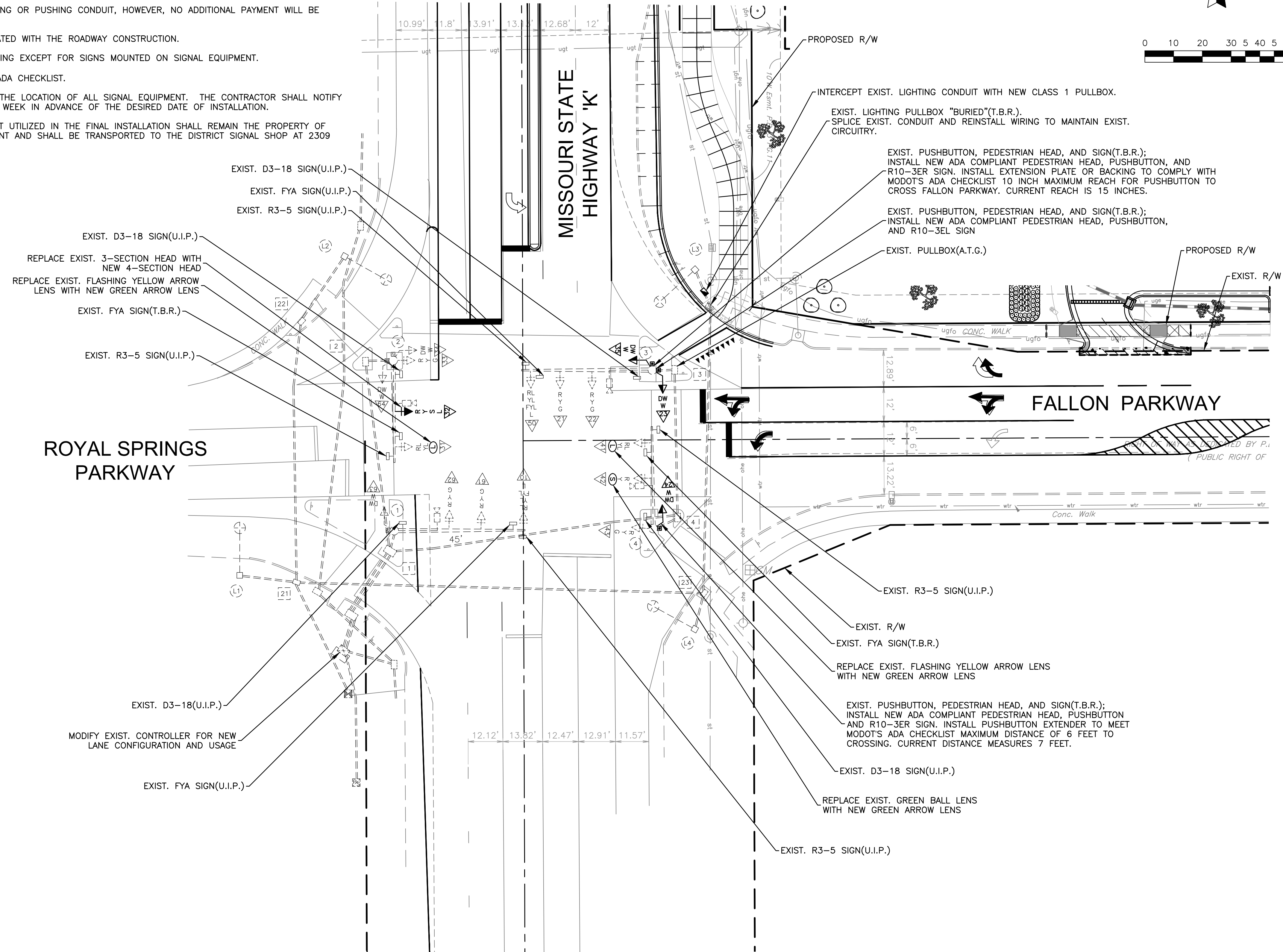
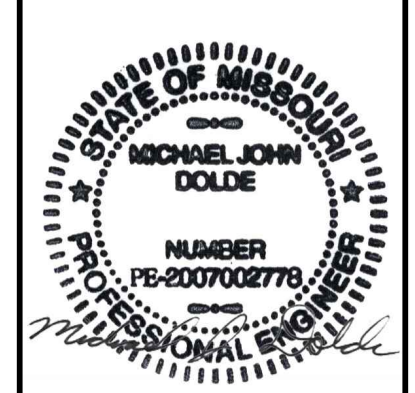


**GENERAL NOTES:**

1. THE INSTALLATION OF THE TRAFFIC SIGNALS SHALL BE IN ACCORDANCE WITH THE MISSOURI HIGHWAY AND TRANSPORTATION COMMISSION'S STANDARD SPECIFICATIONS, LATEST EDITION.
2. EXISTING UNDERGROUND AND OVERHEAD FACILITIES, STRUCTURES AND UTILITIES IF SHOWN ON THESE PLANS, SHALL BE CONSIDERED APPROXIMATE ONLY. VERIFICATION OF THE LOCATIONS OF ALL EXISTING UNDERGROUND FACILITIES, STRUCTURES AND UTILITIES, EITHER SHOWN OR NOT SHOWN ON THESE PLANS, SHALL BE THE RESPONSIBILITY OF THE CONTRACTOR, AND SHALL BE VERIFIED PRIOR TO ANY GRADING, EXCAVATION OR CONSTRUCTION OF IMPROVEMENTS. CALL MISSOURI ONE-CALL SYSTEM AT 1-800-DIG-RITE (344-7483).
3. TRAFFIC CONTROL SHALL BE THE RESPONSIBILITY OF THE CONTRACTOR AND SHALL CONFORM TO THE MANUAL ON UNIFORM TRAFFIC CONTROL DEVICES FOR STREETS AND HIGHWAYS AND MISSOURI DEPARTMENT OF TRANSPORTATION STANDARDS.
4. DIRECTIONAL BORING MAY BE USED INSTEAD OF TRENCHING OR PUSHING CONDUIT, HOWEVER, NO ADDITIONAL PAYMENT WILL BE MADE.
5. THE TRAFFIC SIGNAL CONSTRUCTION SHALL BE COORDINATED WITH THE ROADWAY CONSTRUCTION.
6. REFER TO THE ROADWAY PLANS FOR STRIPING AND SIGNING EXCEPT FOR SIGNS MOUNTED ON SIGNAL EQUIPMENT.
7. ALL PEDESTRIAN FACILITIES MUST COMPLY TO MODOT'S ADA CHECKLIST.
8. THE CONTRACTOR WILL BE RESPONSIBLE FOR SPOTTING THE LOCATION OF ALL SIGNAL EQUIPMENT. THE CONTRACTOR SHALL NOTIFY THE MODOT OUTSOURCE INSPECTOR A MINIMUM OF ONE WEEK IN ADVANCE OF THE DESIRED DATE OF INSTALLATION.
9. ANY EQUIPMENT REMOVED FROM THIS LOCATION AND NOT UTILIZED IN THE FINAL INSTALLATION SHALL REMAIN THE PROPERTY OF THE MISSOURI HIGHWAY AND TRANSPORTATION DEPARTMENT AND SHALL BE TRANSPORTED TO THE DISTRICT SIGNAL SHOP AT 2309 BARRETT STATION ROAD, BALLWIN, MO.



Corporate Engineering Certificate # 000381



CIVIL ENGINEER	
DATE PREPARED 7/18/16	
ROUTE	STATE
6	MO
DISTRICT	SHEET NO.
6	TS1
COUNTY	
ST. CHARLES	
JOB NO.	
TS6-14-14	
CONTRACT ID.	
PROJECT NO.	
BRIDGE NO.	

DATE	DESCRIPTION
3/23/16	1st SUBMITTAL
5/16/16	2nd SUBMITTAL
5/20/16	3rd SUBMITTAL
7/18/16	4th SUBMITTAL

**TRANSPORTATION ENGINEERS+PLANNERS**

12400 OLIVE BLVD, SUITE 430  
ST. LOUIS, MO 63141  
(314) 978-6644

452 COTTONWOOD RD., SUITE B  
ST. LOUIS, MO 63111  
(618) 956-2812

www.abntraffic.com

TRAFFIC SIGNAL MODIFICATION PLAN SHEET

HWY K AND FALLON PKWY/  
ROYAL SPRINGS PKWY

IF A SEAL IS PRESENT ON THIS SHEET IT HAS BEEN ELECTRONICALLY SEALED AND DATED.