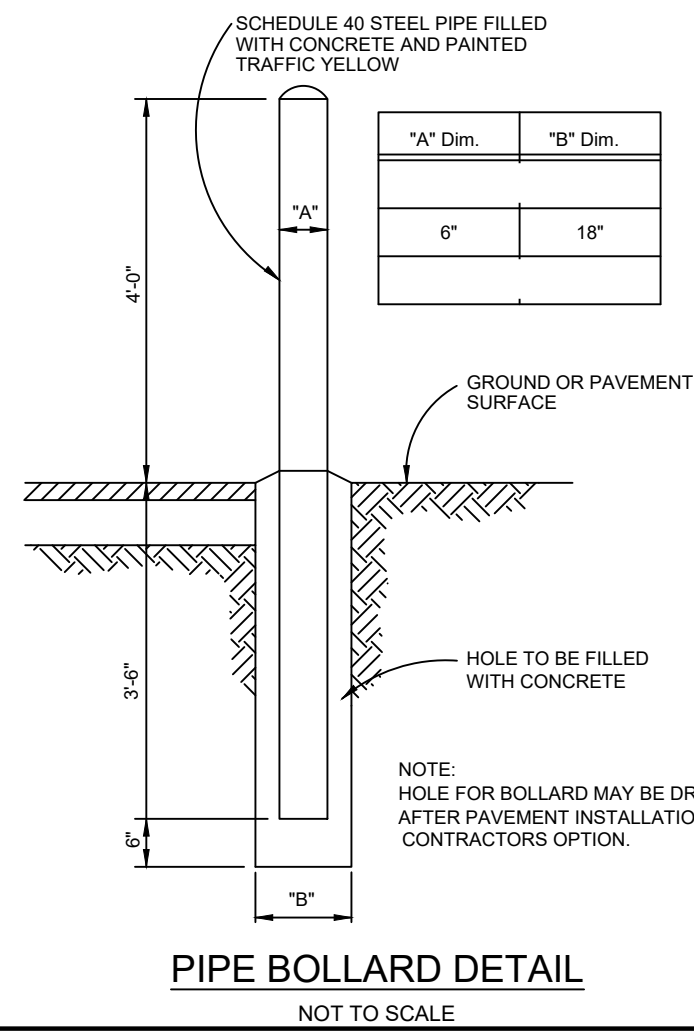


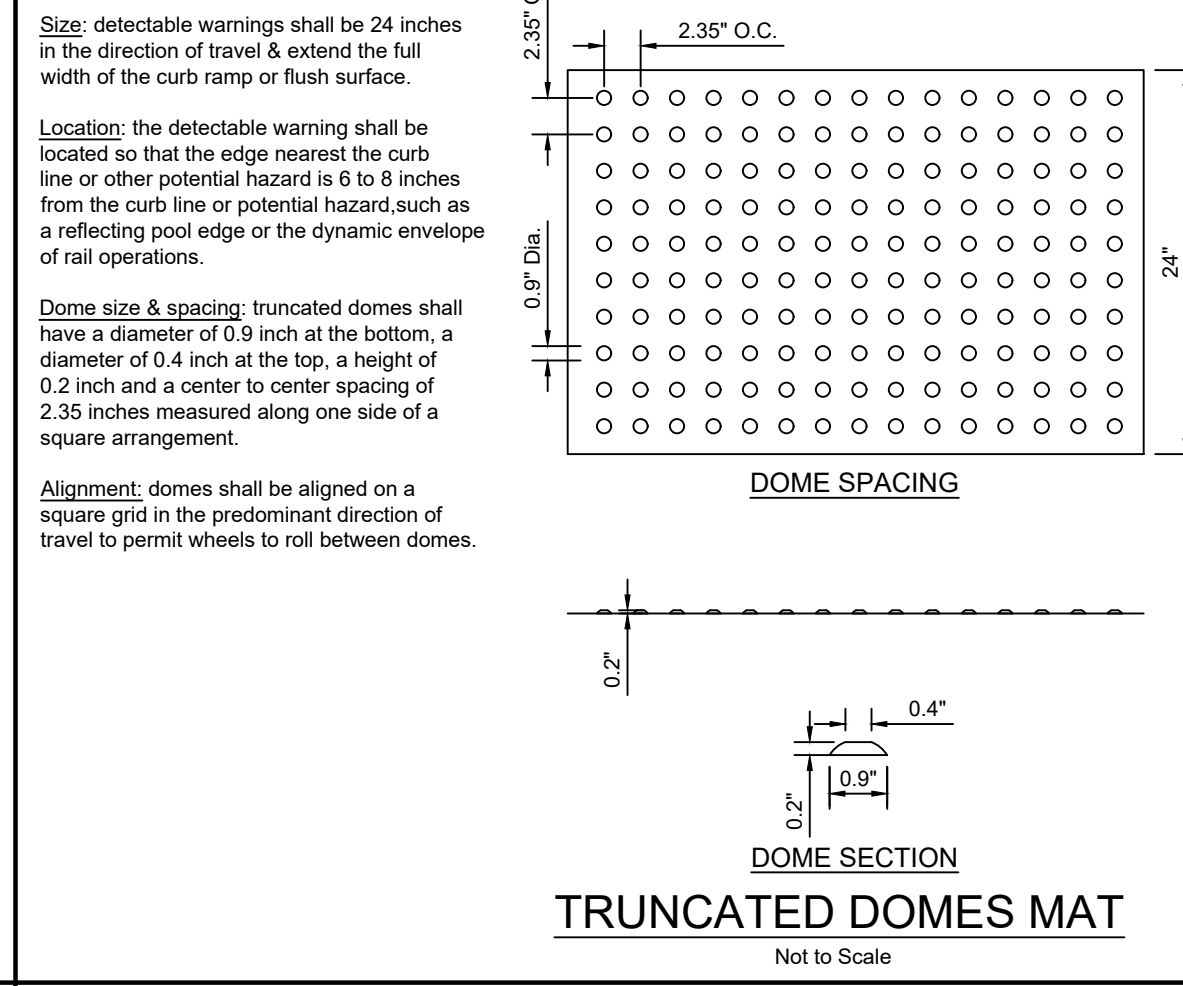


MODEL: BELSON BIKE RACK
 1. INVERTED "U" MODEL NUMBER CBR-2UR-SS-009-C
 2. MOUNT TO CONCRETE PAD PER MANUFACTURER'S RECOMMENDATIONS.
 3. COLOR: POWDER COATED BLACK.

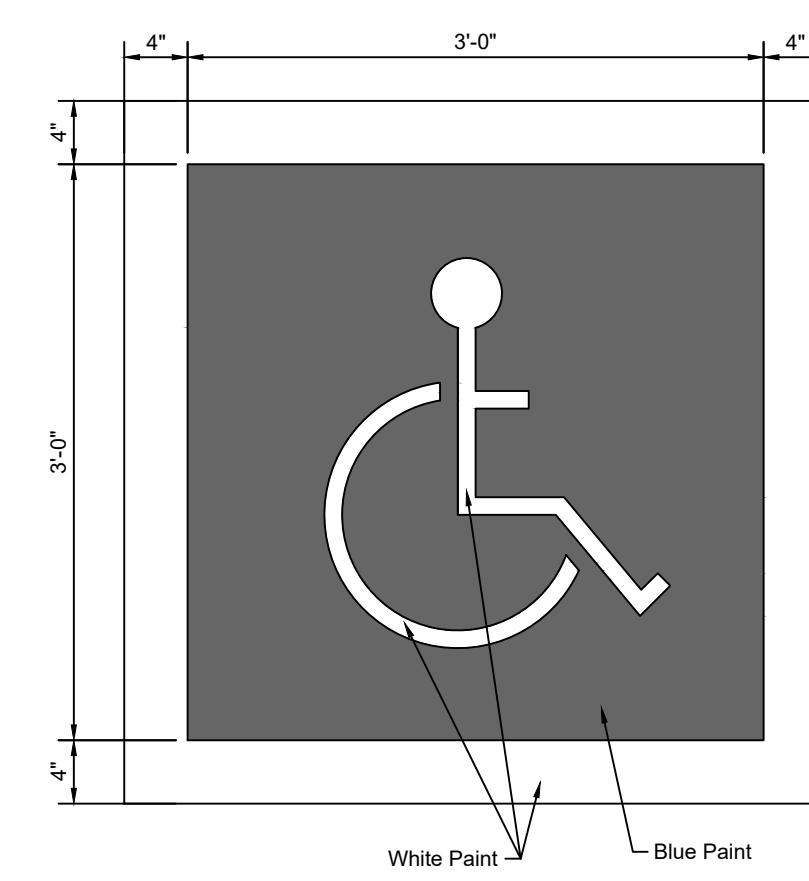
BIKE RACK DETAIL
 Not to Scale



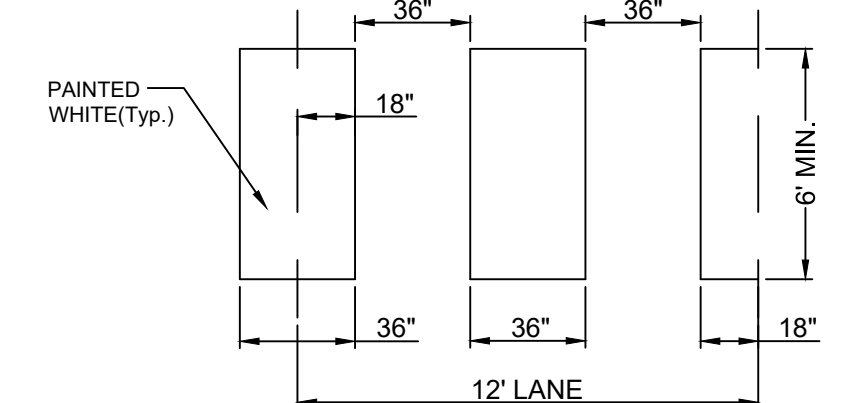
PIPE BOLLARD DETAIL
 NOT TO SCALE



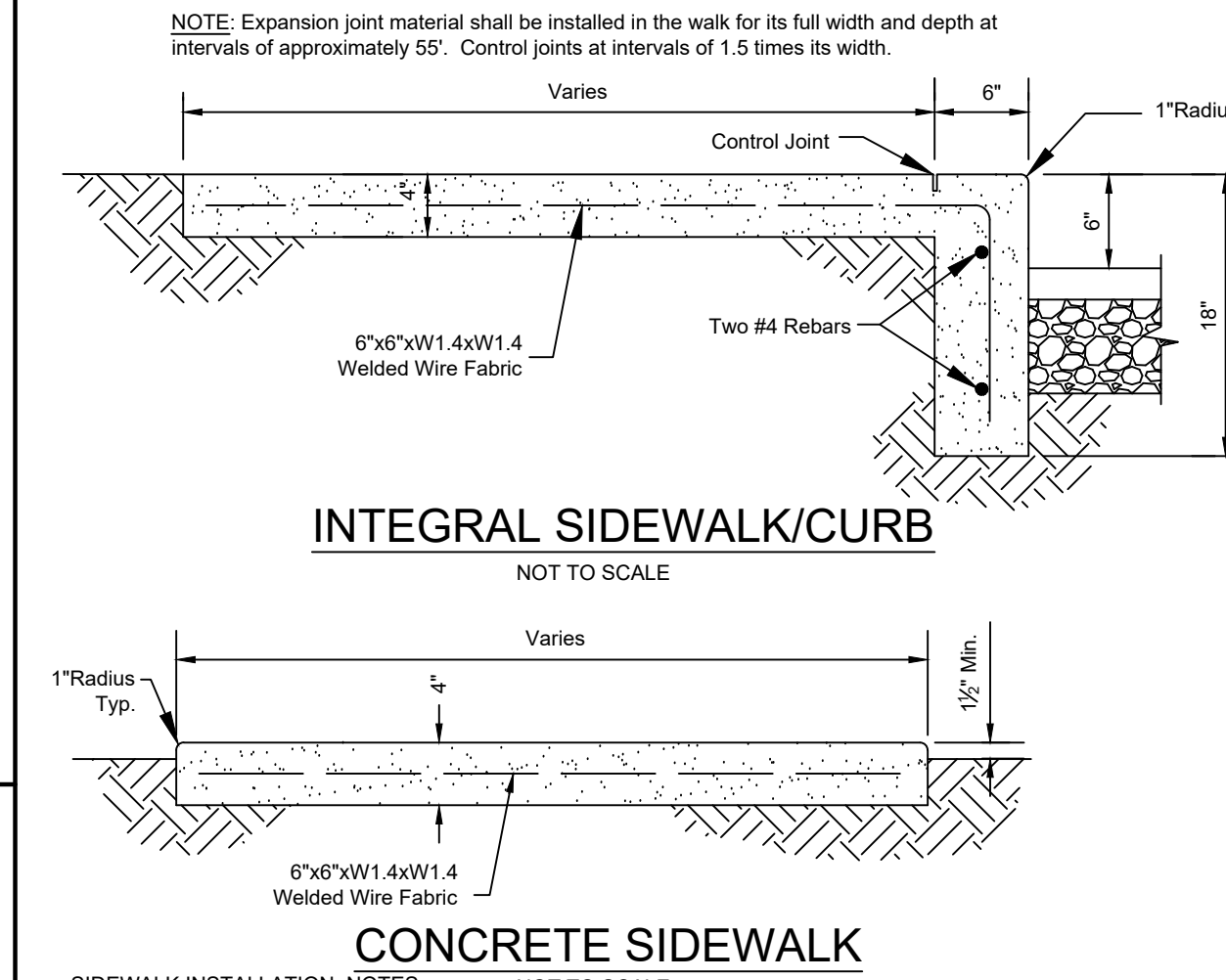
TRUNCATED DOMES MAT
 Not to Scale



INTERNATIONAL ACCESSIBILITY SYMBOL
 (Marking ADA Parking Spaces)
 Not to Scale

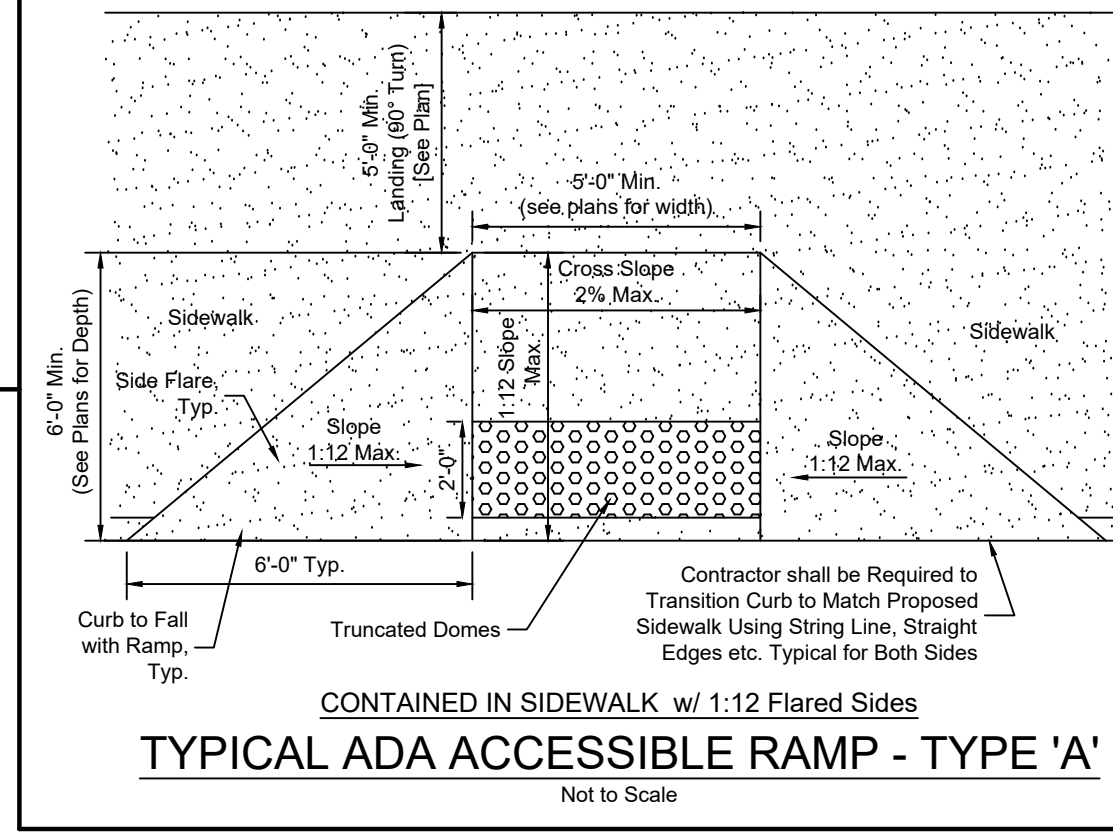


ZEBRA STYLE CROSSING
 Not to Scale

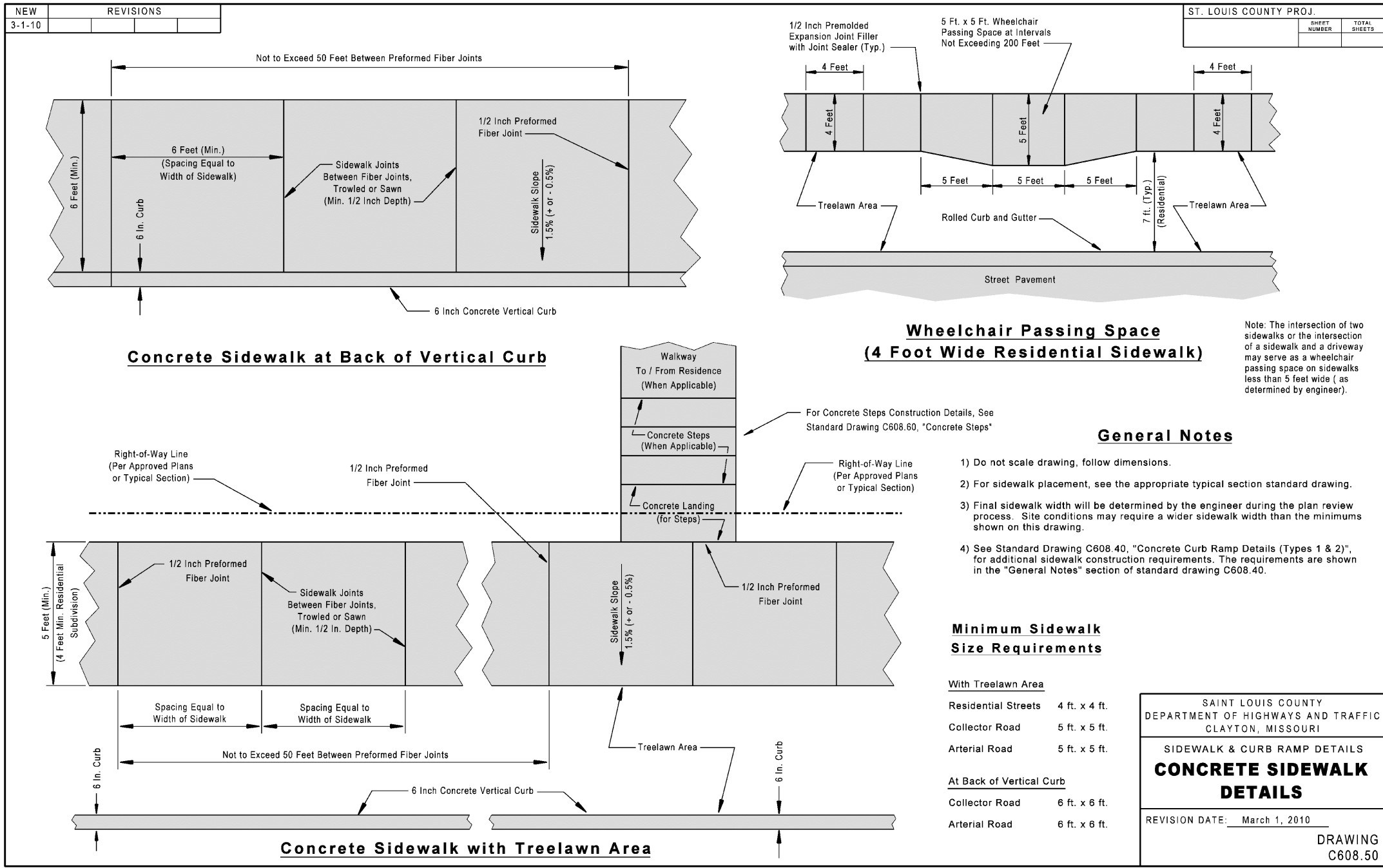


INTEGRAL SIDEWALK/CURB
 NOT TO SCALE
CONCRETE SIDEWALK
 NOT TO SCALE

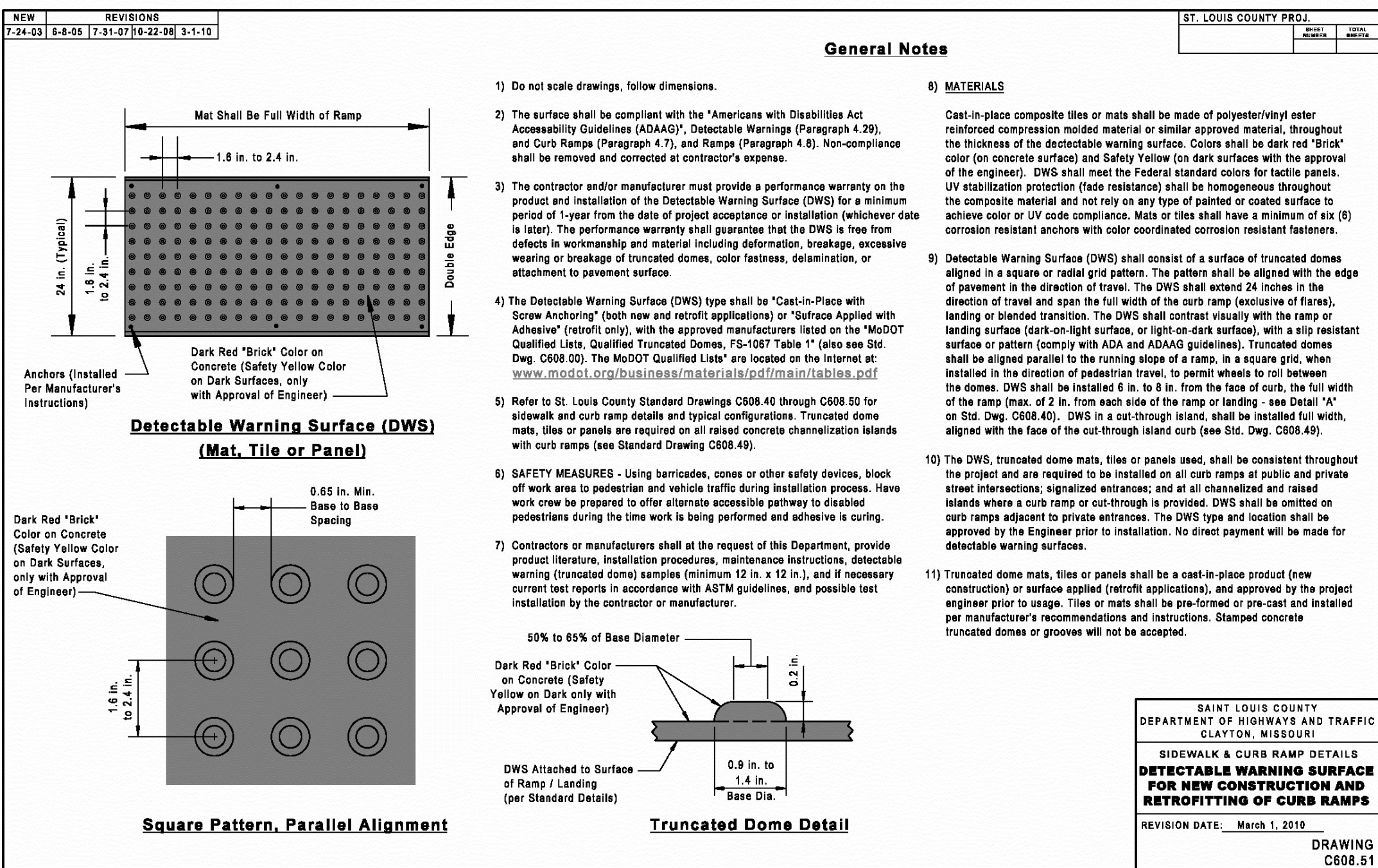
SIDEWALK INSTALLATION NOTES:
 1. EXPANSION JOINT MATERIAL SHALL BE INSTALLED IN THE WALK FOR ITS FULL WIDTH AND DEPTH AT INTERVALS OF APPROXIMATELY 55'. CONTROL JOINTS AT INTERVALS OF 1.5 TIMES ITS WIDTH.
 2. SIDEWALK CROSS SLOPE SHALL BE 1.0% - 1.5% (<2% PER CURRENT ADA GUIDELINES).
 3. MATCH EXISTING SIDEWALK AND CURB JOINT LOCATIONS, WHERE APPLICABLE.
 4. WHERE EXTENDING EXISTING SIDEWALK, THE NEW SIDEWALK TO EXISTING WITH TYPE "D" JOINT WITH (#2 REBAR), OR SIMILAR.
 5. IF EXISTING SIDEWALKS HAVE GRAVEL BASE COURSE, MATCH EXISTING WITH NEW SIDEWALKS.



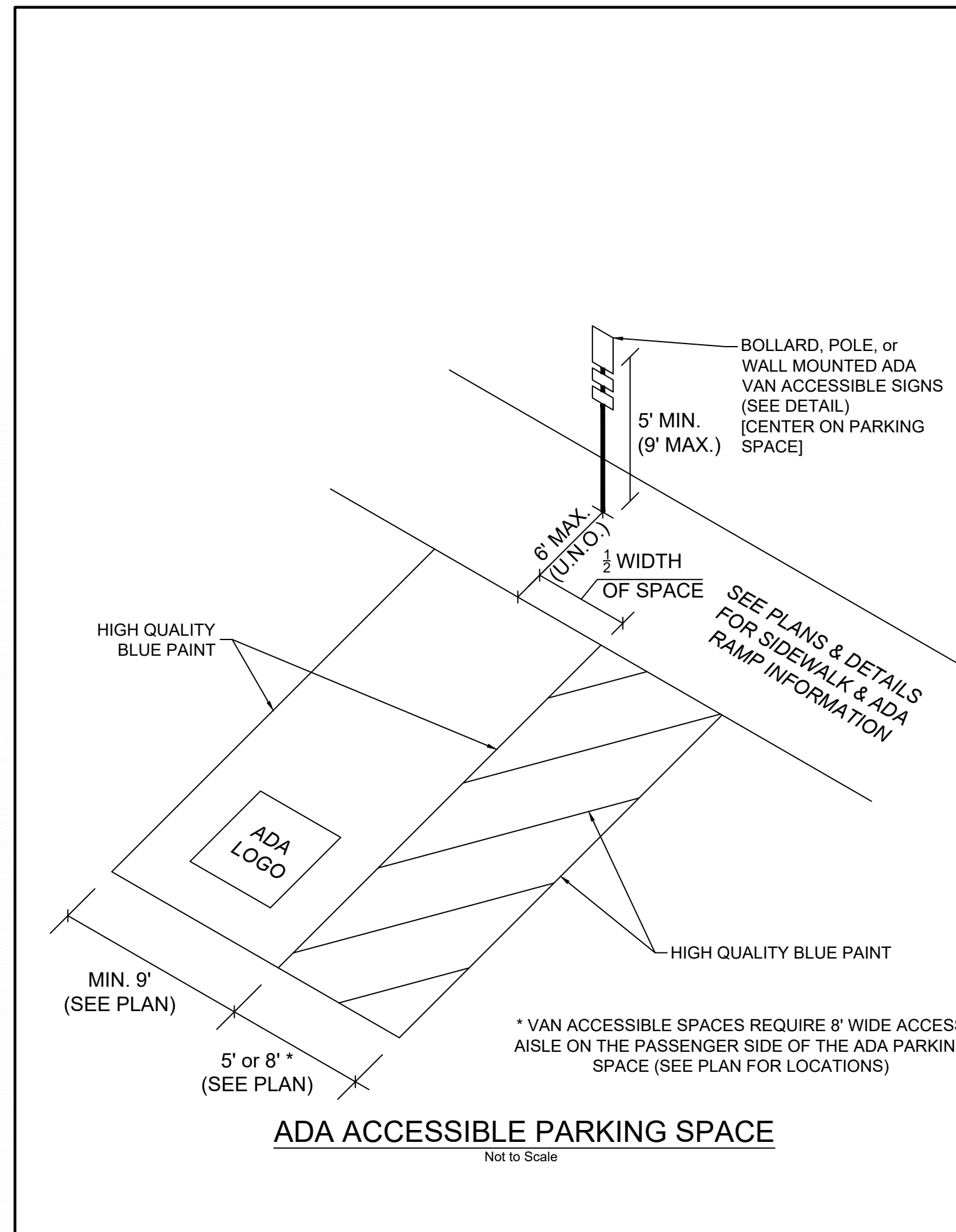
TYPICAL ADA ACCESSIBLE RAMP - TYPE 'A'
 Not to Scale



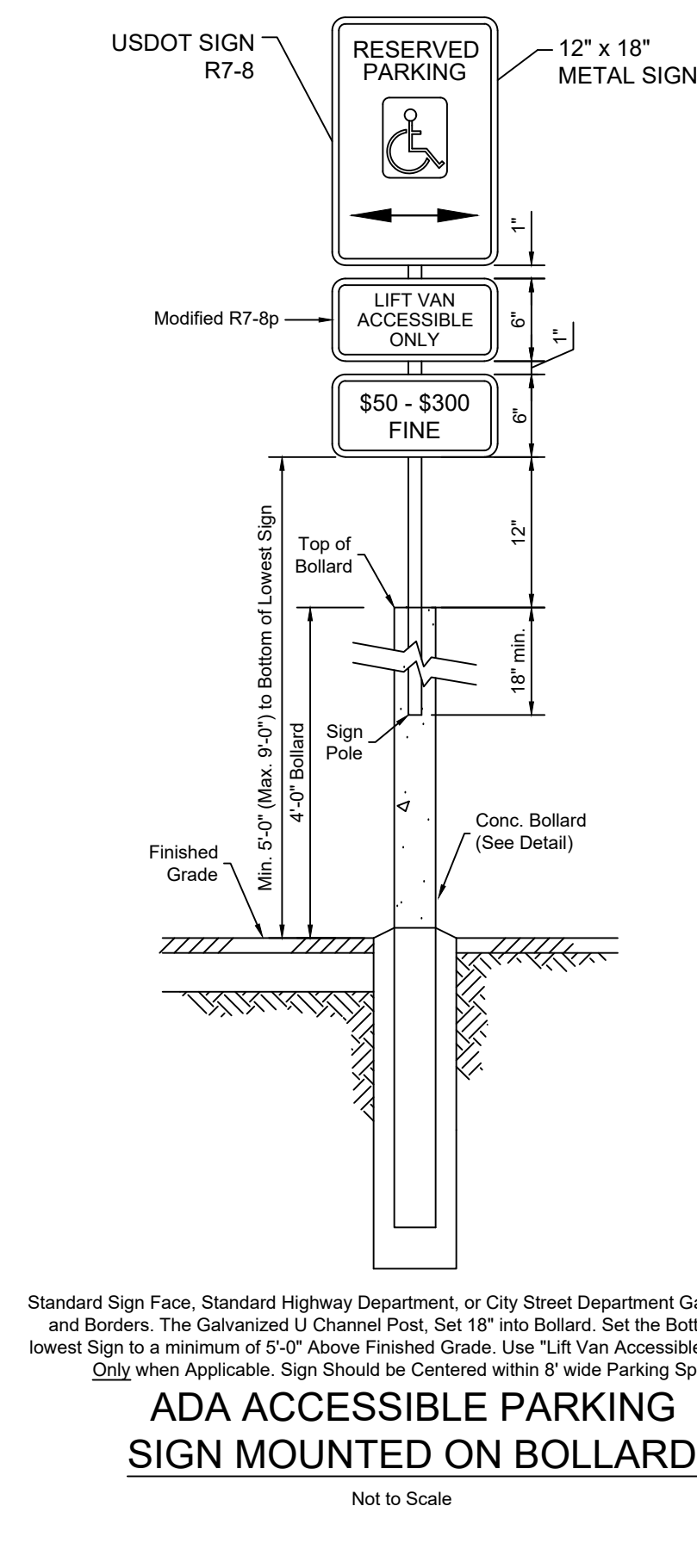
CONCRETE SIDEWALK DETAILS
 REVISION DATE: March 1, 2015
 DRAWING C608.50



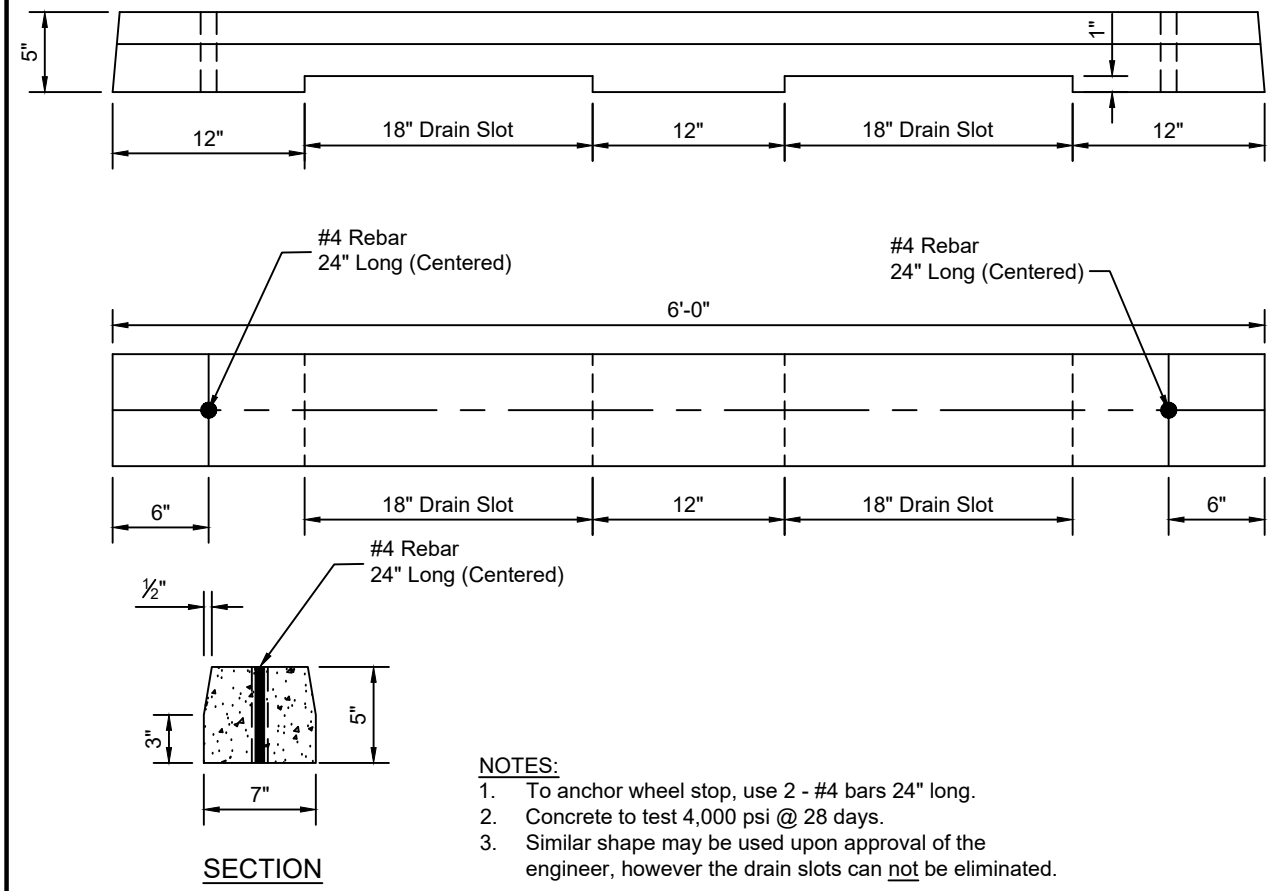
DETECTABLE WARNING SURFACE FOR NEW CONSTRUCTION AND RETROFITTING OF CURB RAMP
 REVISION DATE: March 1, 2015
 DRAWING C608.51



ADA ACCESSIBLE PARKING SPACE
 Not to Scale



ADA ACCESSIBLE PARKING SIGN MOUNTED ON BOLLARD
 Not to Scale



PARKING SPACE WHEEL STOP WITH DRAIN SLOTS
 Not to Scale

The original signed and sealed of this drawing is on file at the office of the Clayton Engineering Company. Any modifications to this drawing shall be made by the Clayton Engineering Company, the Engineer and/or Surveyor whose seal appears hereon from any liability resulting from said unauthorized modifications. The signed and sealed original is the official document and shall take precedence over any digital version.

Call Before you DIG
 Dial 811 or TOLL FREE 1-800-344-7483
 MISSOURI ONE-CALL SYSTEM INC.

Underground facilities, structures & utilities have been plotted from available surveys, records & information, and therefore, do not necessarily reflect the actual existence, nonexistence, size, type, number of, or location of these facilities, structures, & utilities.

The Contractor shall be responsible for verifying the actual location of all underground facilities, structures, & utilities, either shown or not shown on these plans. The underground facilities, structures, & utilities shall be located in the field prior to any grading, excavation or construction of improvements. These provisions shall in no way absolve any party from complying with the Underground Facility Safety and Damage Prevention Act.

Copyright 2022 Clayton Engineering Company, Inc. All Rights Reserved.
the clayton engineering company, inc.
 ENGINEERS • SURVEYORS • PLANNERS
 2288 WELSH INDUSTRIAL COURT
 ST. LOUIS, MISSOURI 63146
 (314) 692-8888 FAX: (314) 692-8888
 1100 Carl LaAlonde Parkway, Suite 200, St. Louis, Missouri 63104
 E-Design: 636.284.4444 Fax: 636.284.4444

NO.	DATE	BY	REVISIONS
2	04-26-22	EAS	City of Ofallon comments
4	05-13-22	EAS	BID SET
4	05-18-22	EAS	MODOT comments (moved details)

FILE: G:\2022\2203 RANGE OF PAVED DRIVEWAY.DWG
 PLOTTED: 05/20/22 12:28 PM
 OFallon, MO

PRIMAX PROPERTIES, LLC
 1100 E. Morehead Street
 Charlotte, NC 28204

CONSTRUCTION DETAILS 1
 RANGE USA INDOOR GUN RANGE

Prepared for:
 Eric A. Skelton - Professional Engineer
 MISSOURI REGISTERED PROFESSIONAL ENGINEER
 No. 06-09-22

Designed: EAS
 Drawn: EAS
 Checked: EAS
 Date: March 19, 2022
 Project Number: 21100
 Sheet Number: C7.0 of